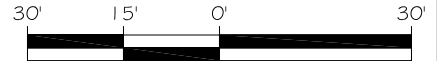
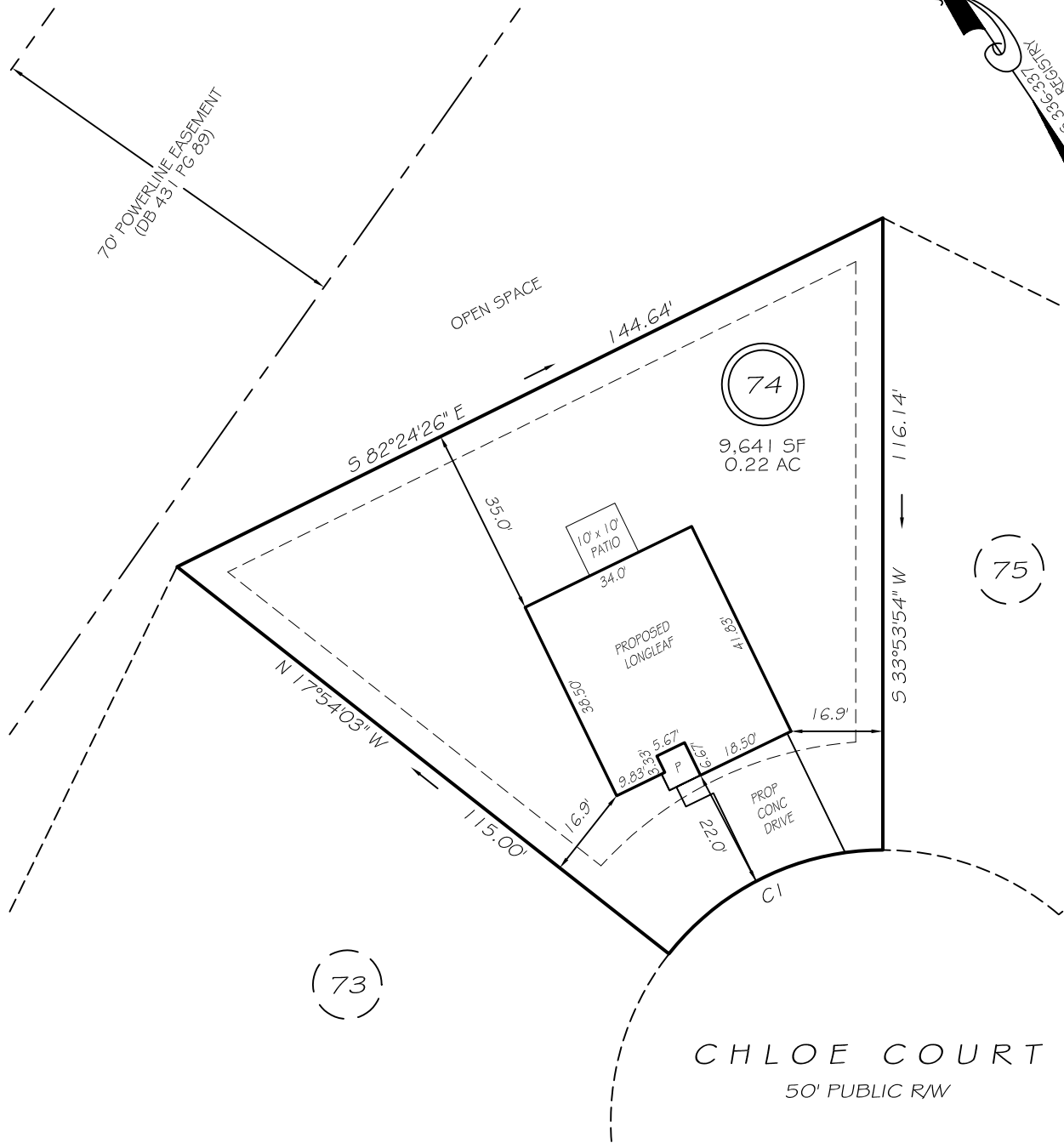
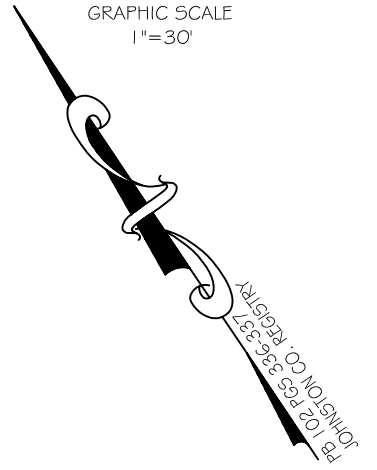


I, MICHAEL P. GRIFFIN, certify that under my direction and supervision this map was drawn from an actual field survey, that the error of closure of the survey as calculated by coordinates is 1: 10,000+; that the area shown hereon was calculated by coordinates. Dashed lines shown hereon were not surveyed.

Witness my hand and seal this day of MONTH 2025.



GRAPHIC SCALE
1"=30'



IMPERVIOUS AREAS

HOUSE	1392 SQ. FT.
DRIVE & WALKS	408 SQ. FT.
PATIO	100 SQ. FT.
TOTAL	1900 SQ. FT.
ALLOWED	3500 SQ. FT.

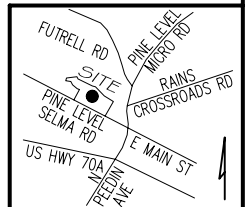
SETBACKS

FRONT	20'
REAR	5'
SIDE	5'
CORNER SIDE	20'

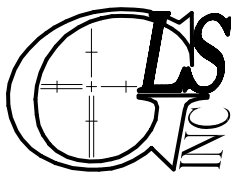
C1 R=50.00' L=45.20' S82°00'05"E 43.68'

LEGEND

EIP	EXISTING IRON PIPE	FES	FLARED END SECTION
ISS	IRON STAKE SET	WM	WATER METER
R/W	RIGHT OF WAY	CO	CLEAN OUT
N/F	NOW OR FORMERLY	FH	FIRE HYDRANT
EIS	EXISTING IRON STAKE	CB	CATCH BASIN



P R E L I M I N A R Y
NOT FOR RECORDATION,
SALES OR CONVEYANCE



GRIFFIN LAND SURVEYING, INC.

P. O. BOX 148
FUQUAY-VARINA, NC 27526
(919) - 567 - 1963

FIRM LIC.# C-1345

PLOT PLAN
FOR
BEN STOUT
CONSTRUCTION
EMILY GARDENS

LOT 74

CHLOE COURT
SELMA, N.C.

JOHNSTON COUNTY PINE LEVEL TOWNSHIP

DRAWN BY **KDF**

DATE **1/6/25**

CHECKED BY **MPG**

SCALE **1" = 30'**