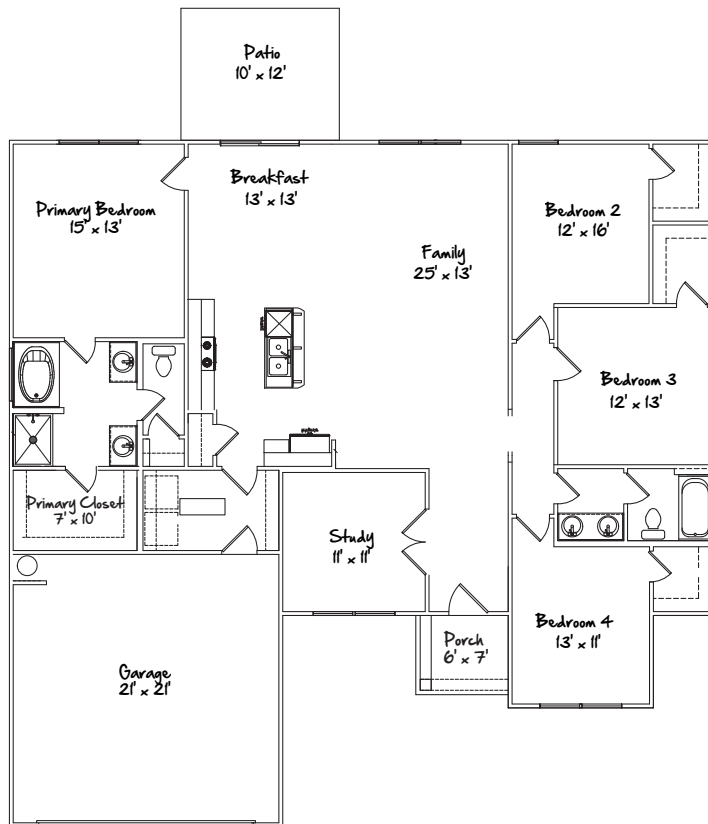


# Richfield II: 4 bed /2 bath • 1,909 sq ft



Room sizes may vary due to selected elevation. Square footages are approximate and are subject to changes based on construction materials. Not all models or options are offered at all neighborhoods or in all states. As we are constantly improving our home plans, we reserve the right to change product features, brand names, architectural design, and details. See our neighborhood specialists for additional information regarding availability or models and options. Floor plans and renderings are for illustrative purposes only and are subject to change without notice. Renderings show optional upgrades that may not be included in each home. Materials, specifications and colors may vary per plan and per neighborhood.

All plans are property of Keystone Homes and cannot be copied or reproduced in any manner.



Phone: 706-651-0075 | Web: [buildkeystone.com](http://buildkeystone.com)