

BRUNSWICK COUNTY HEALTH DEPARTMENT

DATE REC.: 11/23/2005

P.I.N.:

FILE NO.: 1992029596A

ZONING: 2005057066

FALOR RON (ANNE ARNOLD REAL ESTATE)

340.00

217NC012

2852-A OLD FERRY RD SW

HOLDEN BEACH

NC

28462-

(910) 540-5921

TOPPING GLENN R ET SANDRA

LOCKWOOD FOLLY

331

PH 3

SEC

PROPERTY LOCATED, TOWN/CITY/AREA: BRUNSWICK COUNTY

DIRECTIONS TO PROPERTY FROM STONE CHIMNEY RD LEFT ON CLUBHOUSE DR TO LEFT ON MARINA LEFT ON G

246 bends Point Rd.

AUTHORIZATION FOR WASTEWATER CONSTRUCTION PERMIT

NEW REVISION _____ RELOCATION _____ UPGRADE _____ REPAIR _____
Design Flow: 450 gpd. Septic Tank Size: 1,000 gal. Type: T.C.
No. Bedrooms 4 No. occupants/employees 8 Max. Trench/Bed Bottom Depth: 18 inches
No. Lines: 3 Length Each: 53' Bed Dimensions: n/a

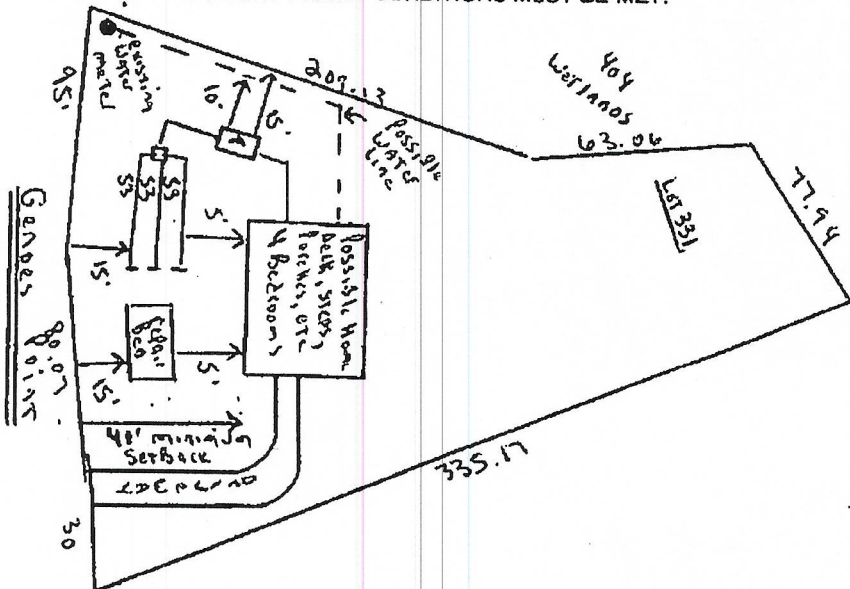
- NOTES:
1. Septic Tank shall have an approved effluent filter and access devices as applicable.
 2. Maintain all setback distances for septic tank systems and wells.
 3. All components of the septic systems shall be located 100 feet if possible but not less than 50 feet to all existing and future well on this parcel and adjacent parcels.

Fill Check: n/a Date _____ Approved: _____ Authorized Agent

PERMIT ISSUE DATE: 2/20/14 Permit expires 60 months from date of issue unless otherwise specified
 30 days from date of issue Other

Authorized Agent: [Signature] Registration: 1717

NOTES: PERMIT IS SUBJECT TO REVOCATION IF SITE PLANS OR THE INTENDED USE CHANGES.
IMPROVEMENT PERMIT CONDITIONS MUST BE MET.



- (NOT TO SCALE)
- * ① Keep Lines shallow: 18" maximum depth
 - ② Repair as Bed at x with 7 lines
 - ③ Keep Tank & O-Box from left side Property Line as shown
 - ④ Keep Water Line 10' minimum from Sewer System
 - ⑤ 41' minimum Setback to any Building
 - * ⑥ String or flag left side Property Line & leave marked for in the 209.13 Property Line

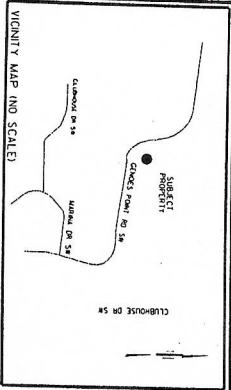
Wastewater System Installer: OTTRIE EVANS Date: 09/26/14

Comments: (tank info/barrier approved) FPS 1020; STB 11; 6-07-14

OPERATION PERMIT: [Signature] Date: 09/26/14

Actions of local health department representatives or the State engaged in the evaluation and determination of measures required to effect compliance with the applicable laws and rules shall in no way be taken as a warranty that sewage treatment and disposal systems approved and permitted will function in a satisfactory manner for any given period of time. The issuance of this permit does not preclude the Permittee from complying with any and all statutes, rules and regulations or ordinances which may be imposed by other government agencies (local, state, and federal) which have jurisdiction.

Authentic: Susan Griffin 10/03/23

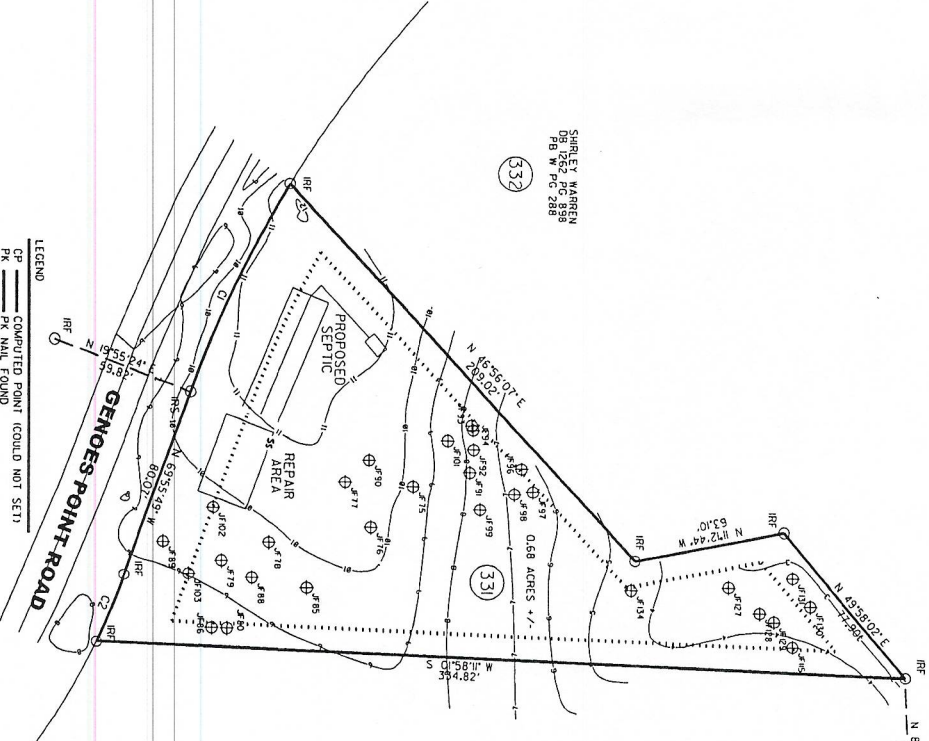


I, GEORGE L. HART, CERTIFY THAT THIS MAP WAS PREPARED UNDER MY SUPERVISION FROM AN ACTUAL FIELD SURVEY OF DESCRIPTIONS AS RECORDED IN DEED BOOK 3353 PAGE 785 AND MAP BOOK W PAGE 288 AND THAT THE BOUNDARIES AND CORNERS INDICATED AS SUCH AND WERE PLOTTED FROM INFORMATION AS BEING ACCURATE AND THAT THE RATIO OF PRECISION AS CALCULATED WAS 1/10000. I FURTHER CERTIFY THIS IS A SURVEY OF AN EXISTING PARCEL OR PARCELS OF LAND WITHIN THE AREA OF A COUNTY OR MUNICIPALITY THAT HAS AN ORDINANCE THAT REGULATES PARCELS OF LAND AND THAT THIS MAP MEETS THE REQUIREMENTS OF THE STANDARDS OF PRACTICE FOR LAND SURVEYING IN NORTH CAROLINA (28 N.C.S. 56.1600) WITNESS MY HAND AND SEAL THIS 28TH DAY OF JUNE 2022

PROFESSIONAL LAND SURVEYOR L-5390



- GENERAL NOTES:
1. ALL DISTANCES ARE HORIZONTAL GROUND.
 2. AREA COMPUTED BY COORDINATE METHOD.
 3. THIS PROPERTY IS SUBJECT TO ANY AND ALL EASEMENTS AND/OR RIGHT OF WAY OF RECORD.
 4. NON-CONFORMING STRUCTURES HAVE NOT BEEN CREATED BY THIS SURVEY.
 5. THIS SURVEY IS SUBJECT TO ANY FACTS DISCLOSED BY A FULL AND ACCURATE TITLE SEARCH.
 6. THIS PROPERTY IS LOCATED WITHIN A FEMA FLOOD HAZARD AREA AE (PANEL 3720203600K EFFECTIVE 08/28/2018).
 7. LOT IS ZONED RESIDENTIAL R7S
 8. UTILITIES WERE NOT LOCATED WITH THIS SURVEY.
 9. SETBACKS SHOULD BE VERIFIED PRIOR TO ANY DESIGN/CONSTRUCTION.
 10. LOT SUBJECT TO MASTER DECLARATION OF HOA.



SHIRLEY WARREN
DB 1262 PG. 898
PB W PG. 288

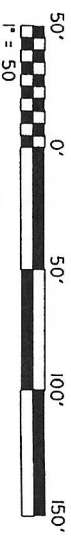
TOMAS RAUSEY
DB 4633 PG. 835
PB W PG. 288

Tree #	Description	Tree #	Description	Tree #	Description
*F38	8" OAK	*F101	15" PINE	*F38	8" OAK
*F101	15" PINE	*F177	12" OAK	*F101	15" PINE
*F177	12" OAK	*F178	12" OAK	*F177	12" OAK
*F178	12" OAK	*F179	12" OAK	*F178	12" OAK
*F179	12" OAK	*F180	18" PINE	*F179	12" OAK
*F180	18" PINE	*F181	18" PINE	*F180	18" PINE
*F181	18" PINE	*F182	12" OAK	*F181	18" PINE
*F182	12" OAK	*F183	12" OAK	*F182	12" OAK
*F183	12" OAK	*F184	12" OAK	*F183	12" OAK
*F184	12" OAK	*F185	12" OAK	*F184	12" OAK
*F185	12" OAK	*F186	18" PINE	*F185	12" OAK
*F186	18" PINE	*F187	18" PINE	*F186	18" PINE
*F187	18" PINE	*F188	18" PINE	*F187	18" PINE
*F188	18" PINE	*F189	18" PINE	*F188	18" PINE
*F189	18" PINE	*F190	18" PINE	*F189	18" PINE
*F190	18" PINE	*F191	18" PINE	*F190	18" PINE
*F191	18" PINE	*F192	18" PINE	*F191	18" PINE
*F192	18" PINE	*F193	18" PINE	*F192	18" PINE
*F193	18" PINE	*F194	18" PINE	*F193	18" PINE
*F194	18" PINE	*F195	18" PINE	*F194	18" PINE
*F195	18" PINE	*F196	18" PINE	*F195	18" PINE
*F196	18" PINE	*F197	18" PINE	*F196	18" PINE
*F197	18" PINE	*F198	18" PINE	*F197	18" PINE
*F198	18" PINE	*F199	18" PINE	*F198	18" PINE
*F199	18" PINE	*F200	18" PINE	*F199	18" PINE
*F200	18" PINE	*F201	18" PINE	*F200	18" PINE
*F201	18" PINE	*F202	18" PINE	*F201	18" PINE
*F202	18" PINE	*F203	18" PINE	*F202	18" PINE
*F203	18" PINE	*F204	18" PINE	*F203	18" PINE
*F204	18" PINE	*F205	18" PINE	*F204	18" PINE
*F205	18" PINE	*F206	18" PINE	*F205	18" PINE
*F206	18" PINE	*F207	18" PINE	*F206	18" PINE
*F207	18" PINE	*F208	18" PINE	*F207	18" PINE
*F208	18" PINE	*F209	18" PINE	*F208	18" PINE
*F209	18" PINE	*F210	18" PINE	*F209	18" PINE
*F210	18" PINE	*F211	18" PINE	*F210	18" PINE
*F211	18" PINE	*F212	18" PINE	*F211	18" PINE
*F212	18" PINE	*F213	18" PINE	*F212	18" PINE
*F213	18" PINE	*F214	18" PINE	*F213	18" PINE
*F214	18" PINE	*F215	18" PINE	*F214	18" PINE
*F215	18" PINE	*F216	18" PINE	*F215	18" PINE
*F216	18" PINE	*F217	18" PINE	*F216	18" PINE
*F217	18" PINE	*F218	18" PINE	*F217	18" PINE
*F218	18" PINE	*F219	18" PINE	*F218	18" PINE
*F219	18" PINE	*F220	18" PINE	*F219	18" PINE
*F220	18" PINE	*F221	18" PINE	*F220	18" PINE
*F221	18" PINE	*F222	18" PINE	*F221	18" PINE
*F222	18" PINE	*F223	18" PINE	*F222	18" PINE
*F223	18" PINE	*F224	18" PINE	*F223	18" PINE
*F224	18" PINE	*F225	18" PINE	*F224	18" PINE
*F225	18" PINE	*F226	18" PINE	*F225	18" PINE
*F226	18" PINE	*F227	18" PINE	*F226	18" PINE
*F227	18" PINE	*F228	18" PINE	*F227	18" PINE
*F228	18" PINE	*F229	18" PINE	*F228	18" PINE
*F229	18" PINE	*F230	18" PINE	*F229	18" PINE
*F230	18" PINE	*F231	18" PINE	*F230	18" PINE
*F231	18" PINE	*F232	18" PINE	*F231	18" PINE
*F232	18" PINE	*F233	18" PINE	*F232	18" PINE
*F233	18" PINE	*F234	18" PINE	*F233	18" PINE
*F234	18" PINE	*F235	18" PINE	*F234	18" PINE
*F235	18" PINE	*F236	18" PINE	*F235	18" PINE
*F236	18" PINE	*F237	18" PINE	*F236	18" PINE
*F237	18" PINE	*F238	18" PINE	*F237	18" PINE
*F238	18" PINE	*F239	18" PINE	*F238	18" PINE
*F239	18" PINE	*F240	18" PINE	*F239	18" PINE
*F240	18" PINE	*F241	18" PINE	*F240	18" PINE
*F241	18" PINE	*F242	18" PINE	*F241	18" PINE
*F242	18" PINE	*F243	18" PINE	*F242	18" PINE
*F243	18" PINE	*F244	18" PINE	*F243	18" PINE
*F244	18" PINE	*F245	18" PINE	*F244	18" PINE
*F245	18" PINE	*F246	18" PINE	*F245	18" PINE
*F246	18" PINE	*F247	18" PINE	*F246	18" PINE
*F247	18" PINE	*F248	18" PINE	*F247	18" PINE
*F248	18" PINE	*F249	18" PINE	*F248	18" PINE
*F249	18" PINE	*F250	18" PINE	*F249	18" PINE
*F250	18" PINE	*F251	18" PINE	*F250	18" PINE
*F251	18" PINE	*F252	18" PINE	*F251	18" PINE
*F252	18" PINE	*F253	18" PINE	*F252	18" PINE
*F253	18" PINE	*F254	18" PINE	*F253	18" PINE
*F254	18" PINE	*F255	18" PINE	*F254	18" PINE
*F255	18" PINE	*F256	18" PINE	*F255	18" PINE
*F256	18" PINE	*F257	18" PINE	*F256	18" PINE
*F257	18" PINE	*F258	18" PINE	*F257	18" PINE
*F258	18" PINE	*F259	18" PINE	*F258	18" PINE
*F259	18" PINE	*F260	18" PINE	*F259	18" PINE
*F260	18" PINE	*F261	18" PINE	*F260	18" PINE
*F261	18" PINE	*F262	18" PINE	*F261	18" PINE
*F262	18" PINE	*F263	18" PINE	*F262	18" PINE
*F263	18" PINE	*F264	18" PINE	*F263	18" PINE
*F264	18" PINE	*F265	18" PINE	*F264	18" PINE
*F265	18" PINE	*F266	18" PINE	*F265	18" PINE
*F266	18" PINE	*F267	18" PINE	*F266	18" PINE
*F267	18" PINE	*F268	18" PINE	*F267	18" PINE
*F268	18" PINE	*F269	18" PINE	*F268	18" PINE
*F269	18" PINE	*F270	18" PINE	*F269	18" PINE
*F270	18" PINE	*F271	18" PINE	*F270	18" PINE
*F271	18" PINE	*F272	18" PINE	*F271	18" PINE
*F272	18" PINE	*F273	18" PINE	*F272	18" PINE
*F273	18" PINE	*F274	18" PINE	*F273	18" PINE
*F274	18" PINE	*F275	18" PINE	*F274	18" PINE
*F275	18" PINE	*F276	18" PINE	*F275	18" PINE
*F276	18" PINE	*F277	18" PINE	*F276	18" PINE
*F277	18" PINE	*F278	18" PINE	*F277	18" PINE
*F278	18" PINE	*F279	18" PINE	*F278	18" PINE
*F279	18" PINE	*F280	18" PINE	*F279	18" PINE
*F280	18" PINE	*F281	18" PINE	*F280	18" PINE
*F281	18" PINE	*F282	18" PINE	*F281	18" PINE
*F282	18" PINE	*F283	18" PINE	*F282	18" PINE
*F283	18" PINE	*F284	18" PINE	*F283	18" PINE
*F284	18" PINE	*F285	18" PINE	*F284	18" PINE
*F285	18" PINE	*F286	18" PINE	*F285	18" PINE
*F286	18" PINE	*F287	18" PINE	*F286	18" PINE
*F287	18" PINE	*F288	18" PINE	*F287	18" PINE
*F288	18" PINE	*F289	18" PINE	*F288	18" PINE
*F289	18" PINE	*F290	18" PINE	*F289	18" PINE
*F290	18" PINE	*F291	18" PINE	*F290	18" PINE
*F291	18" PINE	*F292	18" PINE	*F291	18" PINE
*F292	18" PINE	*F293	18" PINE	*F292	18" PINE
*F293	18" PINE	*F294	18" PINE	*F293	18" PINE
*F294	18" PINE	*F295	18" PINE	*F294	18" PINE
*F295	18" PINE	*F296	18" PINE	*F295	18" PINE
*F296	18" PINE	*F297	18" PINE	*F296	18" PINE
*F297	18" PINE	*F298	18" PINE	*F297	18" PINE
*F298	18" PINE	*F299	18" PINE	*F298	18" PINE
*F299	18" PINE	*F300	18" PINE	*F299	18" PINE

NC GRID
NAD 83 NA 2011

GPS CONTROL NOTES:
1. GPS CONTROL USED FOR THIS PROJECT BASED OFF
2. CLASS OF SURVEY: B
3. POSING: OAK, ACCURACY: +/- 0.07
4. DATE OF SURVEY: 04/28/22
5. DATE OF SURVEY: 04/28/22
6. GROUND MODE/UB: HIET
7. SCALE FACTOR: UNKNOWN

CURVE	RADIUS	CHORD BEARING	CHORD LENGTH
C1	494.59	N 64°24'40" W	94.99'
C2	291.44'	N 67°58'11" W	29.95'



SALT WATER SURVEYING
FIRM LICENSE #: F-1452
GEORGE L. HART, PLS. L-5390
1592 VILLAGE POINT ROAD SW, SHALLOTTE, NC
PHONE 910-509-2104

BOUNDARY SURVEY
OF
246 GENES POINT ROAD
FOR
HERB SMITH
SUPERV. NORTH CAROLINA
LOCKWOOD FOLLY TOWNSHIP
PARCEL = 27NCD02
DEED REFERENCE - DB 3335 PG 785
PLAT BOOK W PAGE 288

DATE: 06/28/2022 SURVEYED BY: GLH
SCALE: 1" = 50' DRAWN BY: GLH
JOB # 291

- LEGEND
- CP COMPUTED POINT (COULD NOT SET)
 - PK PK NAIL FOUND
 - DB DEED BOOK
 - MB MAP BOOK
 - IRF IRON ROD FOUND
 - IRS IRON ROD SET
 - MNS MAG NAIL SET
 - PIF PINCHED IRON FOUND
 - HPF NON PIPE FOUND
 - ECW EXISTING CONCRETE MONUMENT
 - TE LINE
 - SURVEYED BOUNDARY LINE
 - NON-SURVEYED LINES
 - FENCE