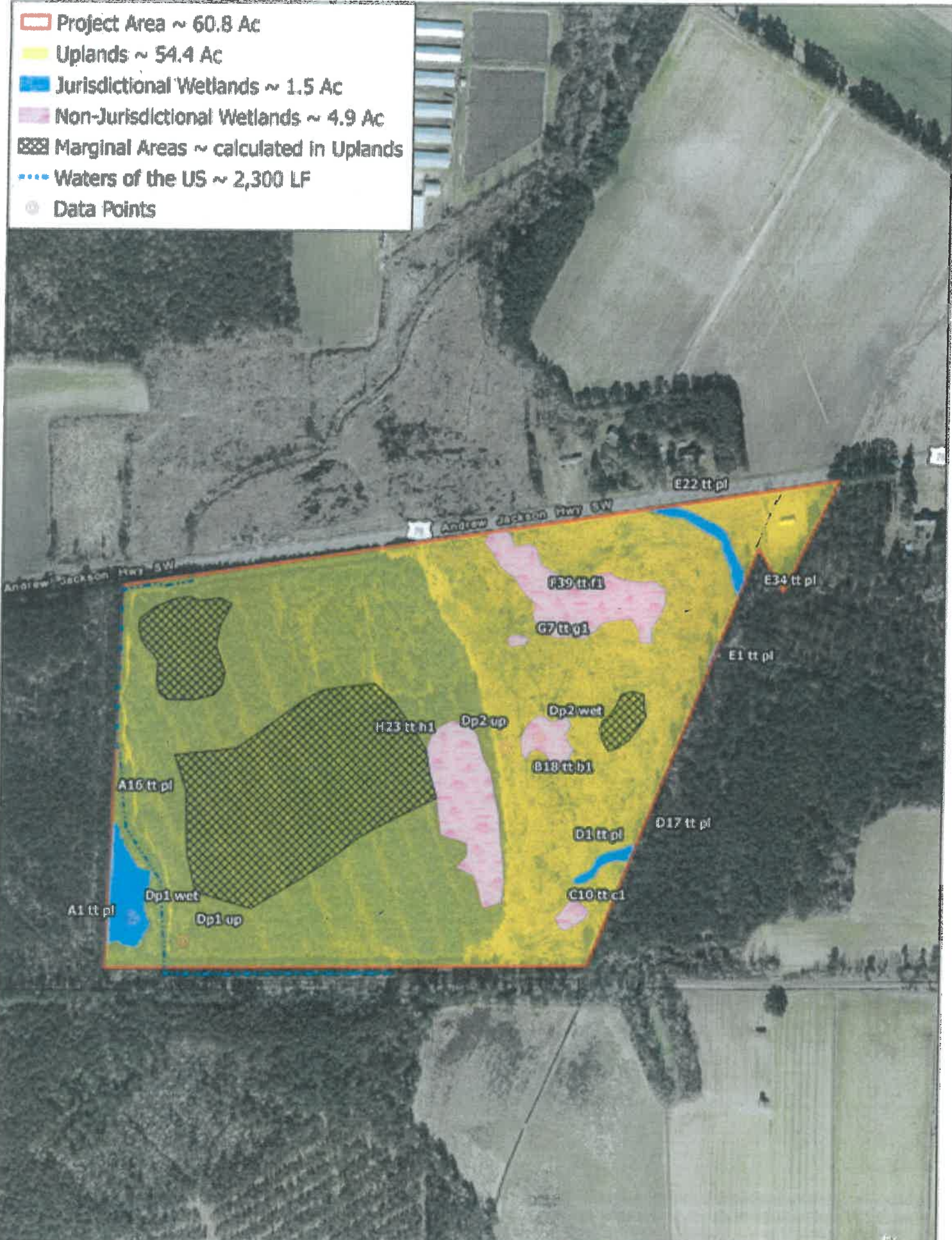


- Project Area ~ 60.8 Ac
- Uplands ~ 54.4 Ac
- Jurisdictional Wetlands ~ 1.5 Ac
- Non-Jurisdictional Wetlands ~ 4.9 Ac
- Marginal Areas ~ calculated in Uplands
- Waters of the US ~ 2,300 LF
- Data Points



10547 Andrew

NOTE: This is not a survey. All boundaries and distances are considered approximate. This represents a preliminary sketch.