

# PlanDwell

---

## HOMES



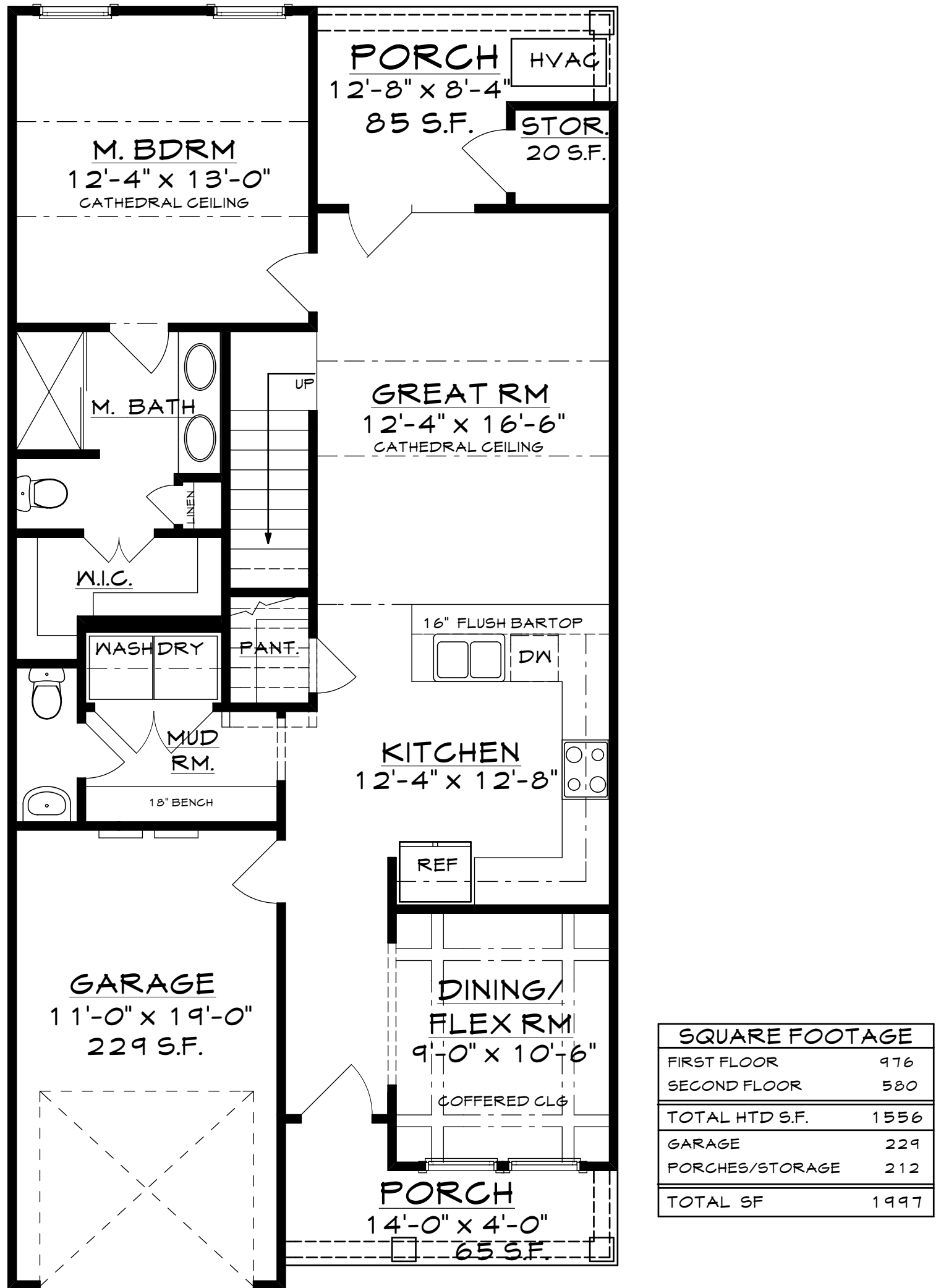
## "GEORGETOWN - A"

---

INDIVIDUAL FLOOR PLANS AND ELEVATIONS MAY VARY WITHIN EACH BUILDING CONFIGURATION.

# PlanDwell

## HOMES



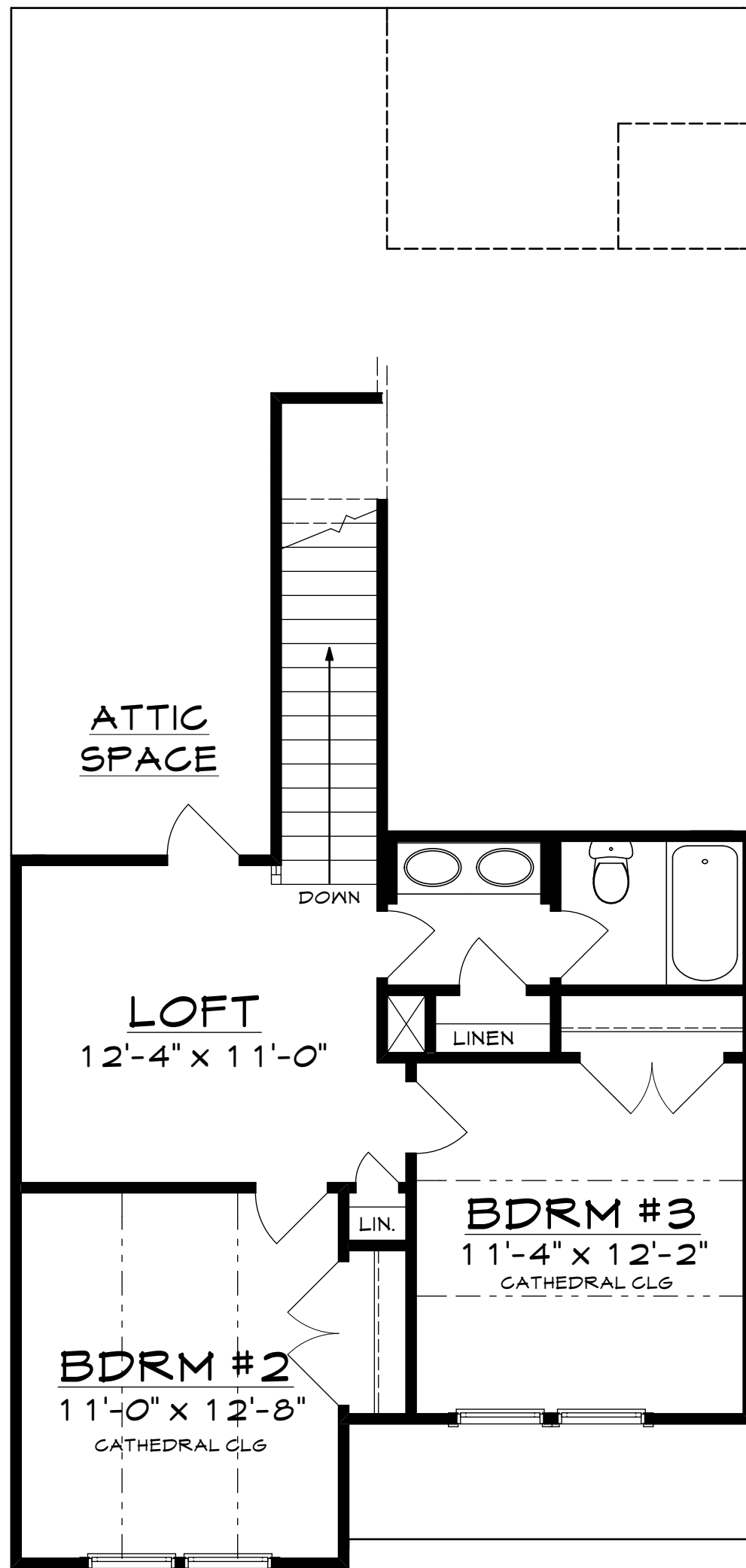
FIRST FLOOR PLAN  
976 S.F. HTD.

# "GEORGETOWN - A"

INDIVIDUAL FLOOR PLANS AND ELEVATIONS MAY VARY WITHIN EACH BUILDING CONFIGURATION.

# PlanDwell

## HOMES



SECOND FLOOR PLAN

580 S.F. HTD.

# "GEORGETOWN - A"

INDIVIDUAL FLOOR PLANS AND ELEVATIONS MAY VARY WITHIN EACH BUILDING CONFIGURATION.