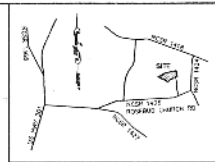


LINE	BEARING	LENGTH	AREA	CH. BEARING	CH. DISTANCE
10	N 100° 46'	10.25	10.25	S 42° 30'	10.84
11	N 100° 46'	102.80	102.80	S 42° 30'	109.25
12	N 100° 46'	102.80	102.80	S 42° 30'	109.25
13	N 100° 46'	102.80	102.80	S 42° 30'	109.25
14	N 100° 46'	102.80	102.80	S 42° 30'	109.25
15	N 100° 46'	102.80	102.80	S 42° 30'	109.25
16	N 100° 46'	102.80	102.80	S 42° 30'	109.25
17	N 100° 46'	102.80	102.80	S 42° 30'	109.25
18	N 100° 46'	102.80	102.80	S 42° 30'	109.25
19	N 100° 46'	102.80	102.80	S 42° 30'	109.25
20	N 100° 46'	102.80	102.80	S 42° 30'	109.25
21	N 100° 46'	102.80	102.80	S 42° 30'	109.25
22	N 100° 46'	102.80	102.80	S 42° 30'	109.25
23	N 100° 46'	102.80	102.80	S 42° 30'	109.25
24	N 100° 46'	102.80	102.80	S 42° 30'	109.25
25	N 100° 46'	102.80	102.80	S 42° 30'	109.25
26	N 100° 46'	102.80	102.80	S 42° 30'	109.25
27	N 100° 46'	102.80	102.80	S 42° 30'	109.25
28	N 100° 46'	102.80	102.80	S 42° 30'	109.25
29	N 100° 46'	102.80	102.80	S 42° 30'	109.25
30	N 100° 46'	102.80	102.80	S 42° 30'	109.25
31	N 100° 46'	102.80	102.80	S 42° 30'	109.25
32	N 100° 46'	102.80	102.80	S 42° 30'	109.25
33	N 100° 46'	102.80	102.80	S 42° 30'	109.25
34	N 100° 46'	102.80	102.80	S 42° 30'	109.25
35	N 100° 46'	102.80	102.80	S 42° 30'	109.25
36	N 100° 46'	102.80	102.80	S 42° 30'	109.25
37	N 100° 46'	102.80	102.80	S 42° 30'	109.25
38	N 100° 46'	102.80	102.80	S 42° 30'	109.25
39	N 100° 46'	102.80	102.80	S 42° 30'	109.25
40	N 100° 46'	102.80	102.80	S 42° 30'	109.25
41	N 100° 46'	102.80	102.80	S 42° 30'	109.25
42	N 100° 46'	102.80	102.80	S 42° 30'	109.25
43	N 100° 46'	102.80	102.80	S 42° 30'	109.25
44	N 100° 46'	102.80	102.80	S 42° 30'	109.25
45	N 100° 46'	102.80	102.80	S 42° 30'	109.25
46	N 100° 46'	102.80	102.80	S 42° 30'	109.25
47	N 100° 46'	102.80	102.80	S 42° 30'	109.25
48	N 100° 46'	102.80	102.80	S 42° 30'	109.25
49	N 100° 46'	102.80	102.80	S 42° 30'	109.25
50	N 100° 46'	102.80	102.80	S 42° 30'	109.25
51	N 100° 46'	102.80	102.80	S 42° 30'	109.25
52	N 100° 46'	102.80	102.80	S 42° 30'	109.25
53	N 100° 46'	102.80	102.80	S 42° 30'	109.25
54	N 100° 46'	102.80	102.80	S 42° 30'	109.25
55	N 100° 46'	102.80	102.80	S 42° 30'	109.25
56	N 100° 46'	102.80	102.80	S 42° 30'	109.25
57	N 100° 46'	102.80	102.80	S 42° 30'	109.25
58	N 100° 46'	102.80	102.80	S 42° 30'	109.25
59	N 100° 46'	102.80	102.80	S 42° 30'	109.25
60	N 100° 46'	102.80	102.80	S 42° 30'	109.25
61	N 100° 46'	102.80	102.80	S 42° 30'	109.25
62	N 100° 46'	102.80	102.80	S 42° 30'	109.25
63	N 100° 46'	102.80	102.80	S 42° 30'	109.25
64	N 100° 46'	102.80	102.80	S 42° 30'	109.25
65	N 100° 46'	102.80	102.80	S 42° 30'	109.25
66	N 100° 46'	102.80	102.80	S 42° 30'	109.25
67	N 100° 46'	102.80	102.80	S 42° 30'	109.25
68	N 100° 46'	102.80	102.80	S 42° 30'	109.25
69	N 100° 46'	102.80	102.80	S 42° 30'	109.25
70	N 100° 46'	102.80	102.80	S 42° 30'	109.25
71	N 100° 46'	102.80	102.80	S 42° 30'	109.25
72	N 100° 46'	102.80	102.80	S 42° 30'	109.25
73	N 100° 46'	102.80	102.80	S 42° 30'	109.25
74	N 100° 46'	102.80	102.80	S 42° 30'	109.25
75	N 100° 46'	102.80	102.80	S 42° 30'	109.25
76	N 100° 46'	102.80	102.80	S 42° 30'	109.25
77	N 100° 46'	102.80	102.80	S 42° 30'	109.25
78	N 100° 46'	102.80	102.80	S 42° 30'	109.25
79	N 100° 46'	102.80	102.80	S 42° 30'	109.25
80	N 100° 46'	102.80	102.80	S 42° 30'	109.25

LINE	BEARING	LENGTH
1	N 100° 46'	10.25
2	N 100° 46'	102.80
3	N 100° 46'	102.80

NOTE:
A SEPTIC TANK PERMIT APPROVED BY THE WILSON COUNTY HEALTH DEPARTMENT IS REQUIRED PRIOR TO ISSUING A BUILDING PERMIT FOR CONSTRUCTION ON THIS LOT.



VICINITY MAP
N 10

- NOTES:
- AREAS COMPUTED BY COORDINATE CALCULATIONS
 - NO CURB MEASUREMENTS FOUND WITHIN 200'
 - ALL DISTANCES SHOWN ARE HORIZONTAL
 - ALL RIGHT-OF-WAYS ARE PUBLIC UNLESS NOTED OTHERWISE
 - RIGHT-OF-WAYS SET AT ALL CORNERS
 - WITHIN 100' OF ANY HAZARDOUS WASTE OR OTHER REGULATED MATERIALS
 - THIS PROPERTY IS NOT LOCATED IN A FLOOD HAZARD AREA
 - PARCEL #270270 DENSE WILSON CO. DATED JANUARY 6, 1983
 - THIS PROPERTY IS NOT LOCATED IN A WILSON COUNTY
 - MEASUREMENTS: 1/8" = 50'
 - ALL DIMENSIONS VISIBLE ON THIS PROPERTY

SITE DATA:

TOTAL AREA IN TRACT	25.00 ACRES
TOTAL NUMBER OF LOTS	47
FRONT	40'
REAR	30'

LEGEND:

- NEW RUN PIPE
- EXISTING RUN PIPE
- EXISTING PG. PILE

I, the undersigned, find that the area(s) of the property shown on attached herein are the 47 lots which shall be shown in accordance with my (our) fee contract, when no express contrary intention has been shown on the plat, and when all the requirements of the Planning Board are met, and when all the requirements of the County Commission are met, and when all the requirements of the County Board of Health are met.

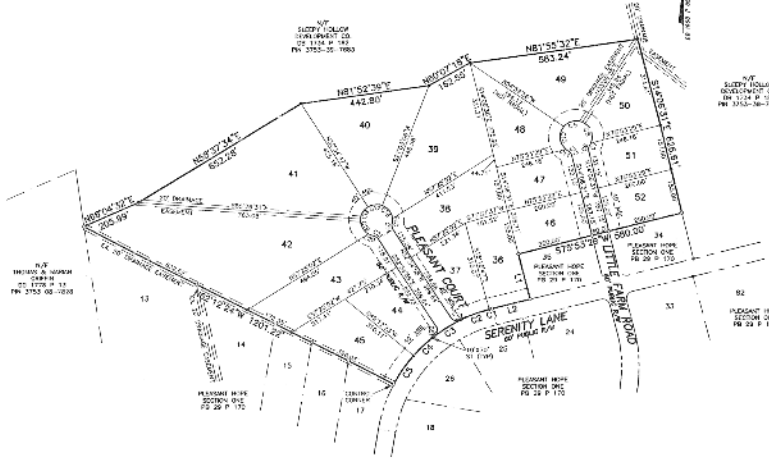
Debra Huff 7-27-02
Date

I hereby certify that the subdivision plat shown herein has been found to comply with the provisions of the Wilson County Code, and that the same is in compliance with the provisions of the Planning Board and the County Commission, and that the same is in compliance with the provisions of the County Board of Health.

Debra Huff 7-27-02
County Board of Health

Debra Huff
County Board of Health

Debra Huff 7-27-02
County Board of Health



N/T
SUFFY HOLLOW
SUBDIVISION CO.
BY: [Signature]
DATE: 7-27-02

LOT AREA
DATA TABLE

LOT	AREA
36	45
37	45
38	45
39	45
40	45
41	45
42	45
43	45
44	45
45	45
46	45
47	45