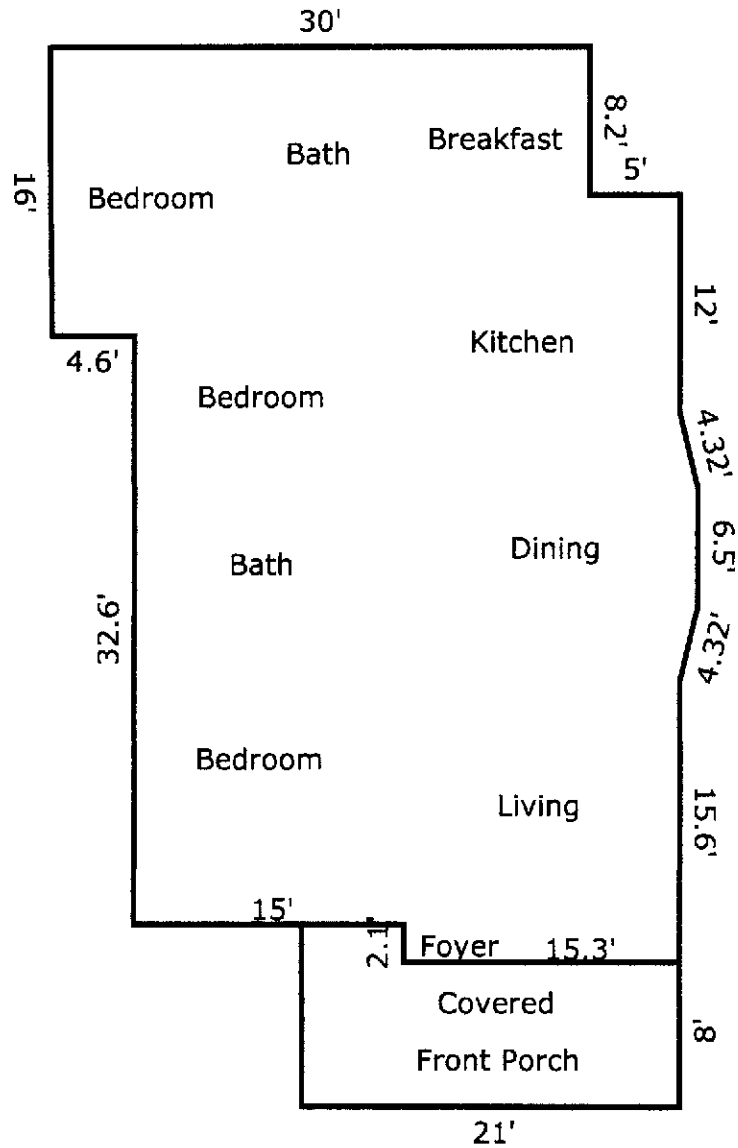


# 923 BELVEDERE STREET, ROCKY MOUNT, NC 27803



TOTAL Sketch by a la mode

## Area Calculations Summary

### Living Area

First Floor

1548.81 Sq ft

### Calculation Details

$0.5 \times 4.2 \times 1 = 2.1$   
 $0.5 \times 1 \times 4.2 = 2.1$   
 $6.5 \times 1 = 6.5$   
 $15.3 \times 2.1 = 32.13$   
 $30.3 \times 32.6 = 987.78$   
 $7.8 \times 5 = 39$   
 $16 \times 29.9 = 478.4$   
 $0.5 \times 16 \times 0.1 = 0.8$

### Total Living Area (Rounded):

1549 Sq ft

### Non-living Area

Covered Porch

179.97 Sq ft

$10.1 \times 5.7 = 57.57$   
 $15.3 \times 8 = 122.4$