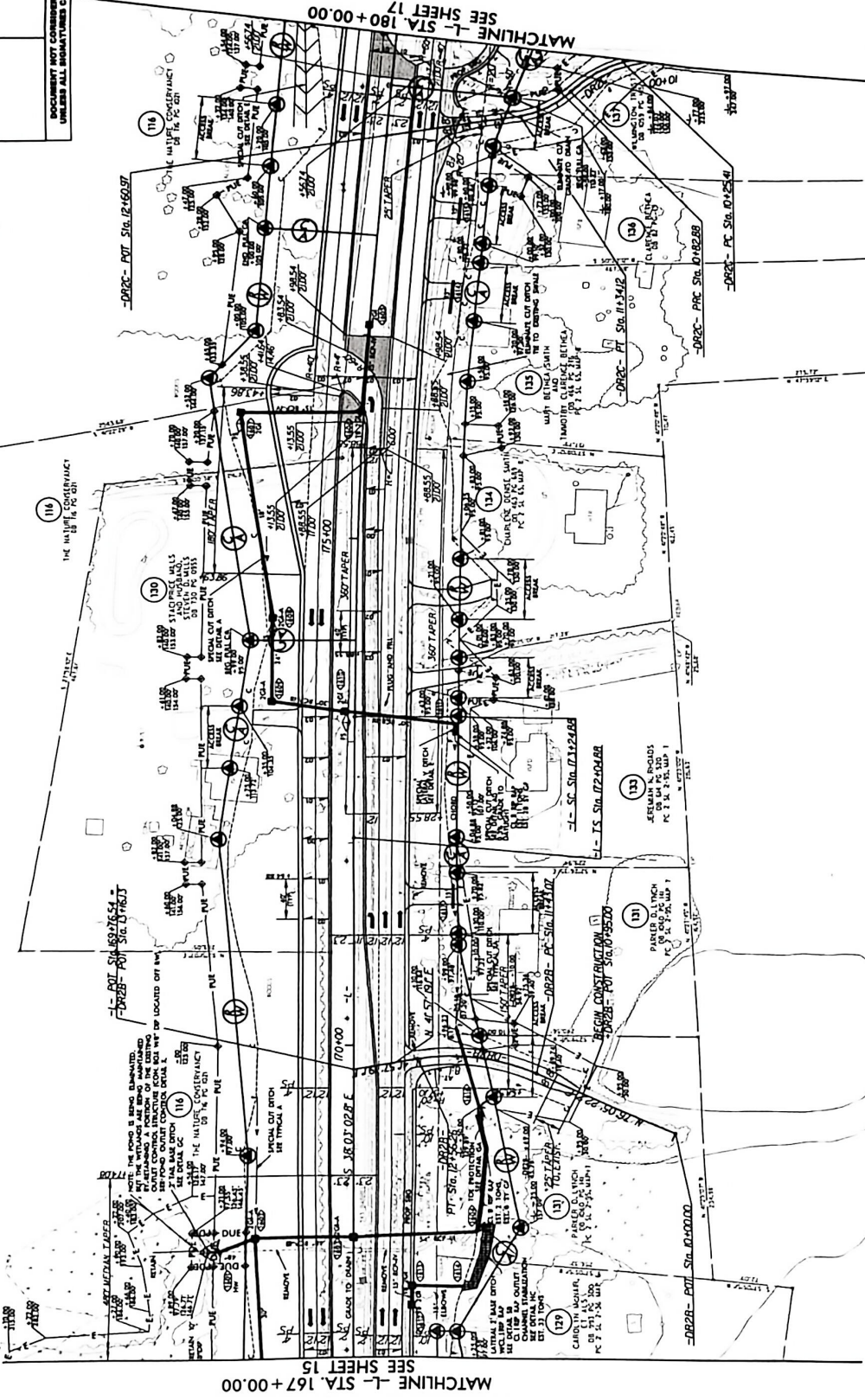


PROJECT REFERENCE NO.	SHEET NO.
H-5709	16
BY	DATE
HYDRAULICS	POWERS
BOUNDARY SURVEY	
DESIGN	

DOCUMENT NOT COMPLETED FINAL
UNLESS ALL INDICATED COMPLETED



CURB & GUTTER LOCATIONS			
DESCRIPTION	ALX	STATION	LOC
S&C	-L-	853+23.58	853+57.0
S&C	-L-	1791+430	1819+222



FOR DRPC DETAILS, TD-A
SEE SHEET NO. 17A
FOR -L- PROFILE SEE SHEET NOS. 79 & 80
FOR -DRPC- PROFILE SEE SHEET NO. 17A
FOR -DRPC- PROFILE SEE SHEET NO. 17A
ALL DRIVEWAYS ARE 16 FEET IN WIDTH WITH
10-FOOT EXISTING DRIVE TYPE UNLESS
OTHERWISE NOTED

PIV. STA.	PT. STA.	DRPC- PT. STA.	DRPC- PT. STA.
172+44.88	183+94.87	173+32.40	173+32.40
64 = 0' 14" 2.25'	Δ = 20' 13" 2.05' RTI	Δ = 34' 08" 0.17' LT	Δ = 29' 56" 0.28' LT
L5 = 120.00'	Δ = 0' 57" 1.7'	Δ = 37' 09" 20.4'	Δ = 52' 09" 11.5'
ST = 40.00'	L = 207.27'	L = 57.40'	L = 52.40'
R = 80.00'	R = 100.00'	R = 28.00'	R = 26.00'
SE = 0.031	V = 65 MPH		

- Right of way: 0.186 Acres
- Perm. Utility Easement: 0.027 Acres
- Perm. Drainage Easement: 0.016 Acres
- Temp. Construction Easement: 0.251 Acres

