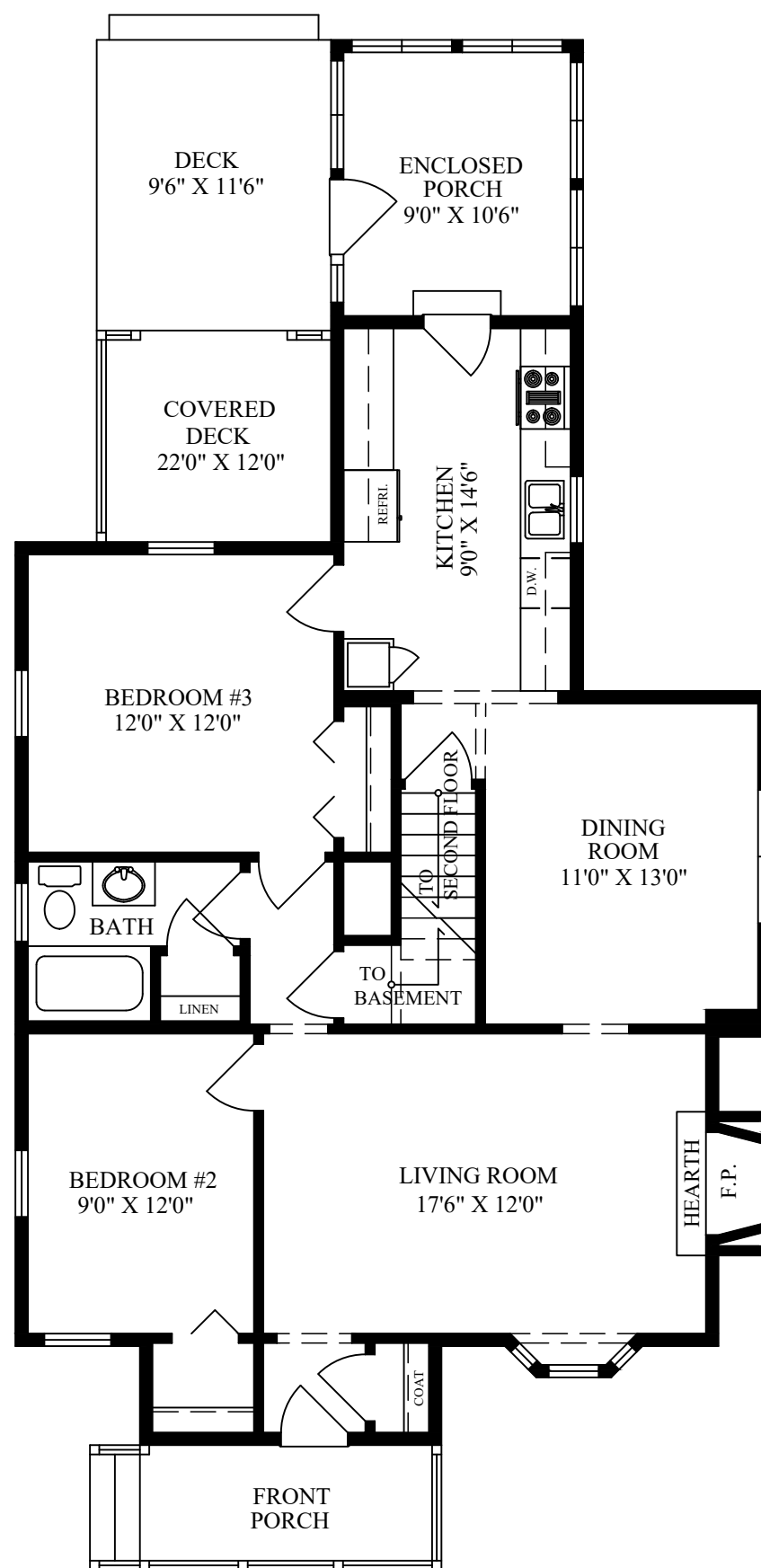


240 East Ohio Avenue Southern Pines, NC 28306

FIRST FLOOR APROX. 986 HTG. SQUARE FEET
SECOND FLOOR APROX. 597 HTG. SQUARE FEET
BASEMENT APROX. 376 SQUARE FEET

TOTAL HEATED FOOTAGE:
APROX. TOTAL 1,583 HTG. SQUARE FEET



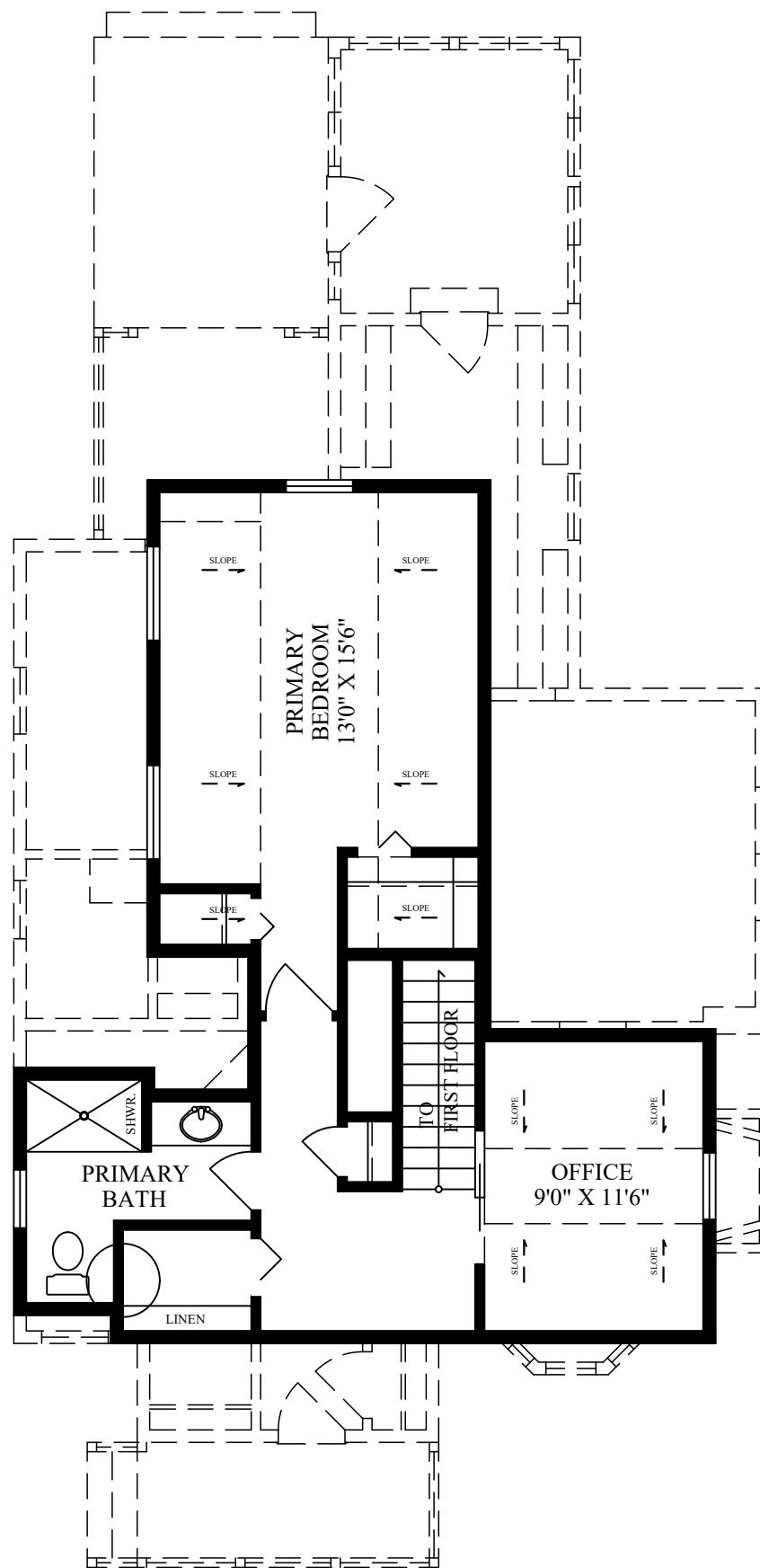
FIRST FLOOR

Drawing and dimensions are to be used for visual purposes only as actuals could differ.

240 East Ohio Avenue Southern Pines, NC 28306

FIRST FLOOR APROX. 986 HTG. SQUARE FEET
SECOND FLOOR APROX. 597 HTG. SQUARE FEET
BASEMENT APROX. 376 SQUARE FEET

TOTAL HEATED FOOTAGE:
APROX. TOTAL 1,583 HTG. SQUARE FEET



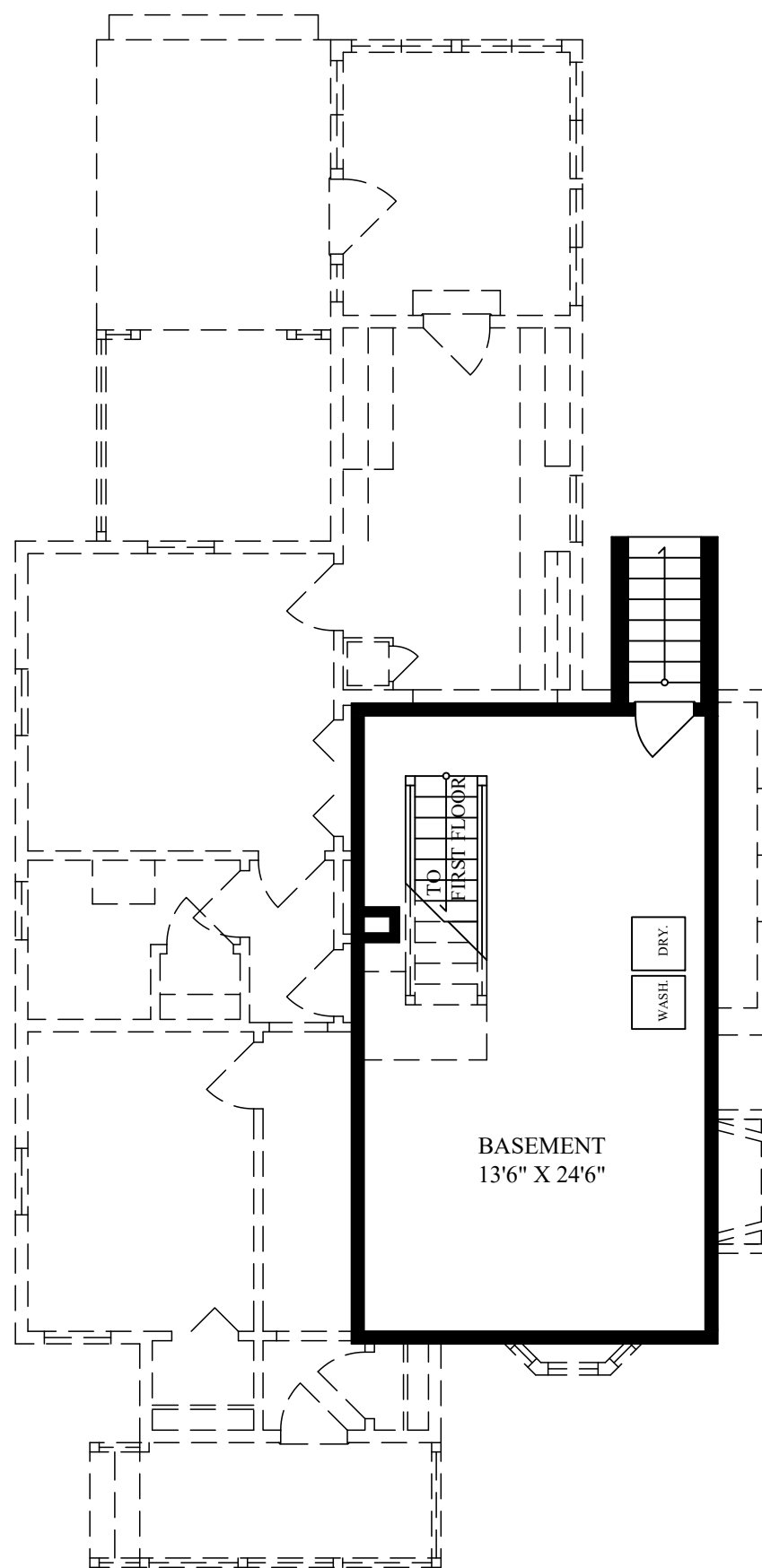
SECOND FLOOR

Drawing and dimensions are to be used for visual purposes only as actuals could differ.

240 East Ohio Avenue Southern Pines, NC 28306

FIRST FLOOR APROX. 986 HTG. SQUARE FEET
SECOND FLOOR APROX. 597 HTG. SQUARE FEET
BASEMENT APROX. 376 SQUARE FEET

TOTAL HEATED FOOTAGE:
APROX. TOTAL 1,583 HTG. SQUARE FEET



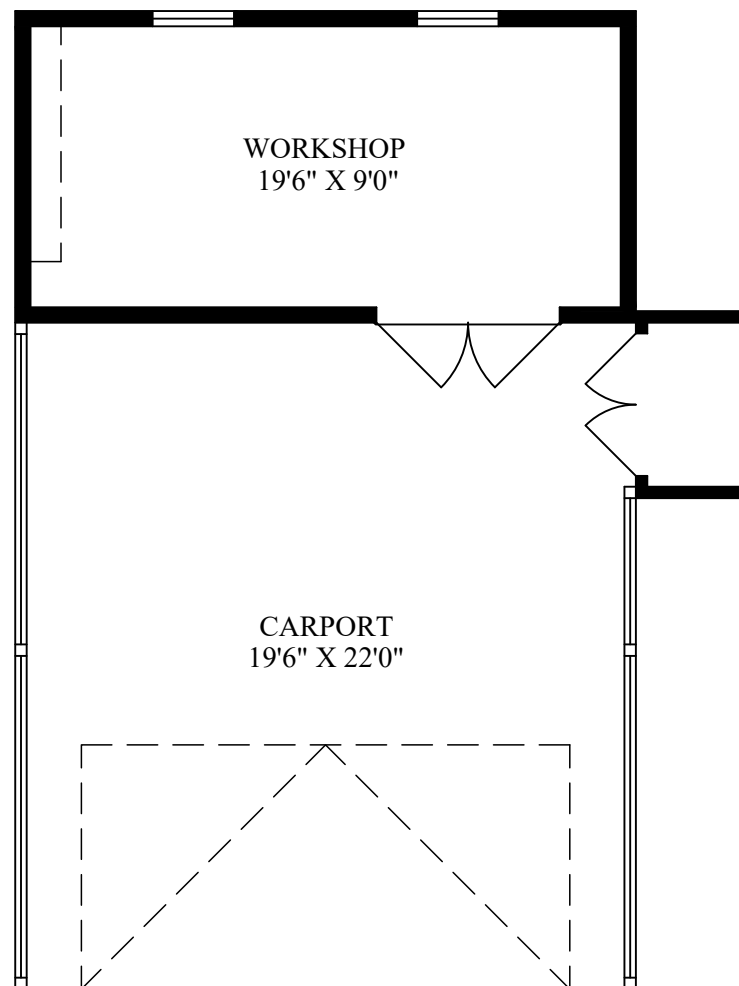
BASEMENT

Drawing and dimensions are to be used for visual purposes only as actuals could differ.

240 East Ohio Avenue
Southern Pines, NC 28306

FIRST FLOOR APROX. 986 HTG. SQUARE FEET
SECOND FLOOR APROX. 597 HTG. SQUARE FEET
BASEMENT APROX. 376 SQUARE FEET

TOTAL HEATED FOOTAGE:
APROX. TOTAL 1,583 HTG. SQUARE FEET



CARPORT
WORKSHOP

Drawing and dimensions are to be used for visual purposes only as actuals could differ.