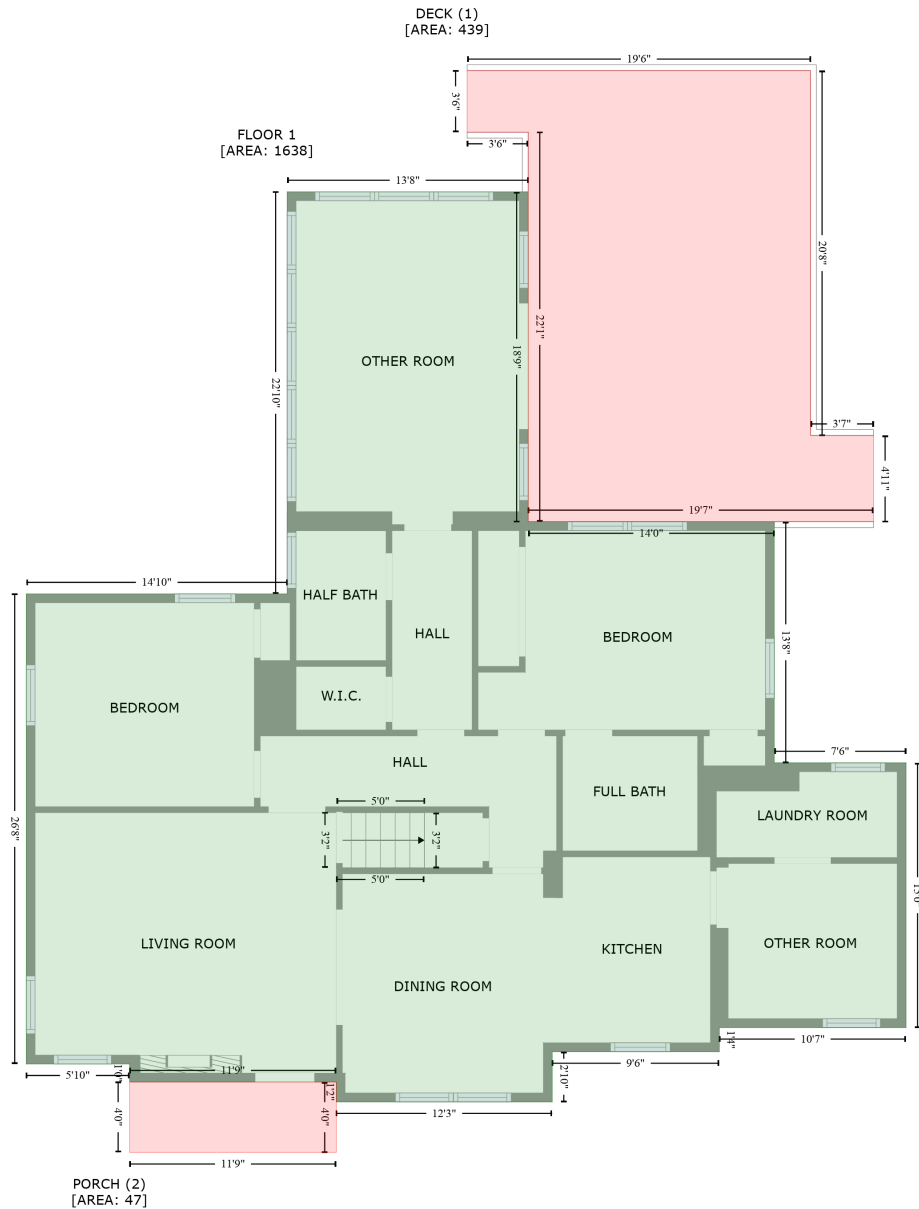


415 Bordeaux Street, Jacksonville, Onslow County, North Carolina, United States, 28540

Gross Living Area: 2401 sq. ft



Space	Area (sq. ft)	Calculation
FLOOR 1 (Living area)	1638	Coordinate Polygon Area Algorithm using inches $-((445.1 + 445.1) * (5.4 - 229.9) + (445.1 + 612.7) * (229.9 - 229.9) + (612.7 + 612.7) * (229.9 - 394) + (612.7 + 702.5) * (394 - 394) + (702.5 + 702.5) * (394 - 574.1) + (702.5 + 575.3) * (574.1 - 574.1) + (575.3 + 575.3) * (574.1 - 590.5) + (575.3 + 461.5) * (590.5 - 590.5) + (461.5 + 461.5) * (590.5 - 624.7) + (461.5 + 314.5) * (624.7 - 624.7) + (314.5 + 314.5) * (624.7 - 611.2) + (314.5 + 173.7) * (611.2 - 611.2) + (173.7 + 173.7) * (611.2 - 598.9) + (173.7 + 103.3) * (598.9 - 598.9) + (103.3 + 103.3) * (598.9 - 279) + (103.3 + 281) * (279 - 279) + (281 + 281) * (279 - 5.4) + (281 + 445.1) * (5.4 - 5.4)) * 0.5 * 0.00694$

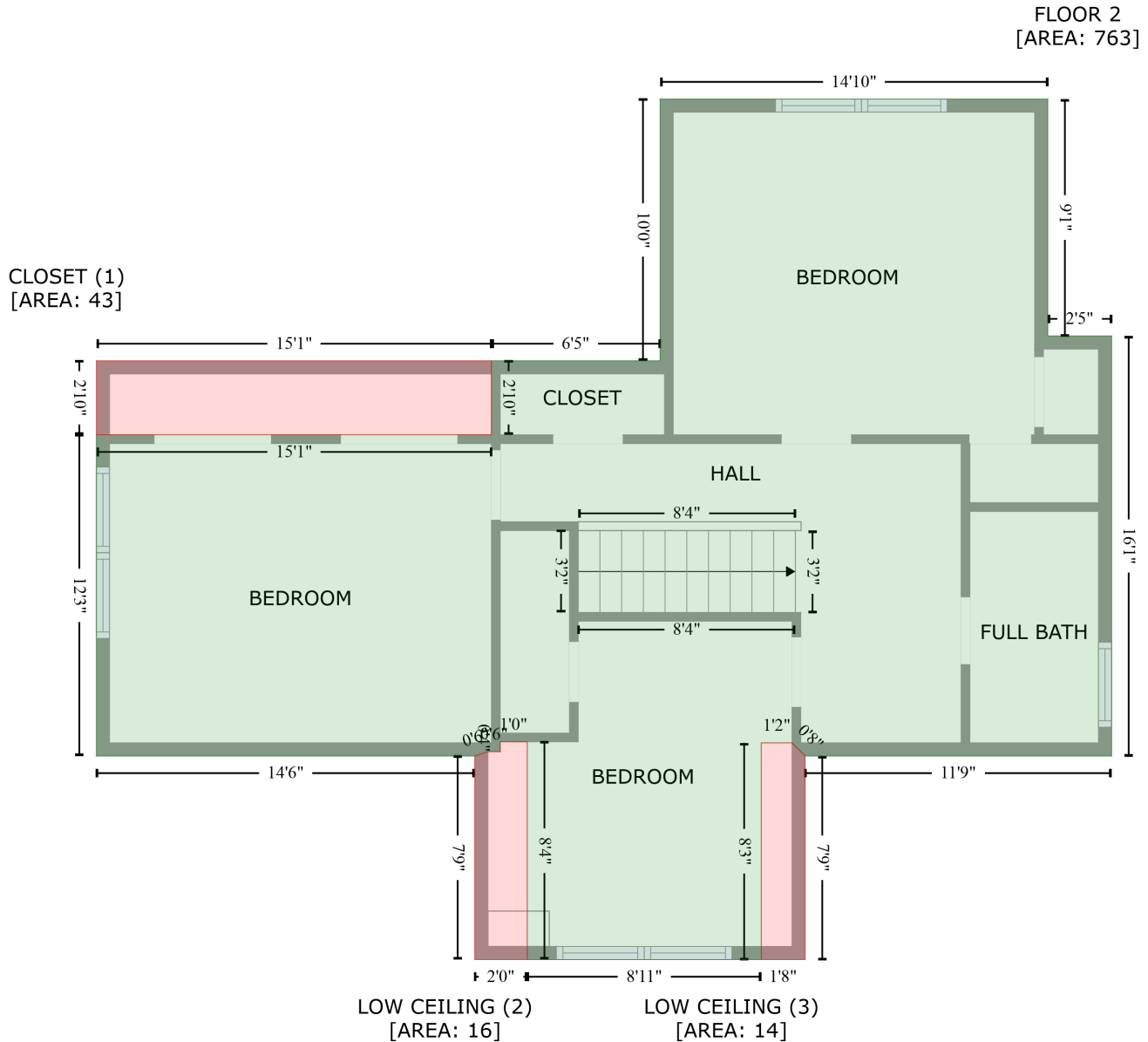
415 Bordeaux Street, Jacksonville, Onslow County, North Carolina, United States, 28540

Gross Living Area: 2401 sq. ft

Space	Area (sq. ft)	Calculation <small>Coordinate Polygon Area Algorithm using inches</small>
DECK (Non-living area)	439	$-\left((637.4 + 637.4) * (-77.1 - 171.2) + (637.4 + 680.3) * (171.2 - 171.2) + (680.3 + 680.3) * (171.2 - 229.9) + (680.3 + 445.1) * (229.9 - 229.9) + (445.1 + 445.1) * (229.9 - -35.1) + (445.1 + 403.6) * (-35.1 - -35.1) + (403.6 + 403.6) * (-35.1 - -77.1) + (403.6 + 637.4) * (-77.1 - -77.1)\right) * 0.5 * 0.00694$
PORCH (Non-living area)	47	$-\left((314.5 + 314.5) * (611.2 - 659.1) + (314.5 + 173.7) * (659.1 - 659.1) + (173.7 + 173.7) * (659.1 - 611.2) + (173.7 + 314.5) * (611.2 - 611.2)\right) * 0.5 * 0.00694$

415 Bordeaux Street, Jacksonville, Onslow County, North Carolina, United States, 28540

Gross Living Area: 2401 sq. ft



Space	Area (sq. ft)	Calculation <small>Coordinate Polygon Area Algorithm using inches</small>
FLOOR 2 (Living area)	763	$ \begin{aligned} & -((534.8 + 534.8) * (226.7 - 335.4) + (534.8 + 564.1) * (335.4 - 335.4) + (564.1 + 564.1) * (335.4 - \\ & 528.1) + (564.1 + 423.4) * (528.1 - 528.1) + (423.4 + 417.4) * (528.1 - 522.1) + (417.4 + 403.3) * \\ & (522.1 - 522.1) + (403.3 + 403.3) * (522.1 - 621.5) + (403.3 + 295.8) * (621.5 - 621.5) + (295.8 + \\ & 295.8) * (621.5 - 521.6) + (295.8 + 283.4) * (521.6 - 521.6) + (283.4 + 283.4) * (521.6 - 526.1) + \\ & (283.4 + 277.8) * (526.1 - 526.1) + (277.8 + 271.8) * (526.1 - 528.1) + (271.8 + 98) * (528.1 - \\ & 528.1) + (98 + 98) * (528.1 - 380.8) + (98 + 279.4) * (380.8 - 380.8) + (279.4 + 279.4) * (380.8 - \\ & 346.8) + (279.4 + 356.8) * (346.8 - 346.8) + (356.8 + 356.8) * (346.8 - 226.7) + (356.8 + 534.8) * \end{aligned} $

415 Bordeaux Street, Jacksonville, Onslow County, North Carolina, United States, 28540

Gross Living Area: 2401 sq. ft

Space	Area (sq. ft)	Calculation <small>Coordinate Polygon Area Algorithm using inches</small>
		$(226.7 - 226.7) * 0.5 * 0.00694$
CLOSET (Non-living area)	43	$-((279.4 + 279.4) * (346.8 - 380.8) + (279.4 + 98) * (380.8 - 380.8) + (98 + 98) * (380.8 - 346.8) + (98 + 279.4) * (346.8 - 346.8)) * 0.5 * 0.00694$
LOW CEILING (Non-living area)	16	$-((295.8 + 295.8) * (521.6 - 621.5) + (295.8 + 271.8) * (621.5 - 621.5) + (271.8 + 271.8) * (621.5 - 528.1) + (271.8 + 277.8) * (528.1 - 526.1) + (277.8 + 283.4) * (526.1 - 526.1) + (283.4 + 283.4) * (526.1 - 521.6) + (283.4 + 295.8) * (521.6 - 521.6)) * 0.5 * 0.00694$
LOW CEILING (Non-living area)	14	$-((417.4 + 423.4) * (522.1 - 528.1) + (423.4 + 423.4) * (528.1 - 621.5) + (423.4 + 403.3) * (621.5 - 621.5) + (403.3 + 403.3) * (621.5 - 522.1) + (403.3 + 417.4) * (522.1 - 522.1)) * 0.5 * 0.00694$