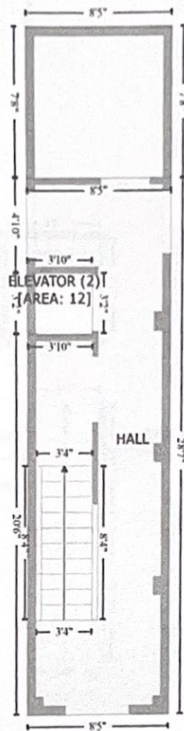


**Salter Path Road, Indian Beach North Carolina United States**  
 Gross Living Area: 3384 sq. ft

STORAGE (1)  
 [AREA: 65]

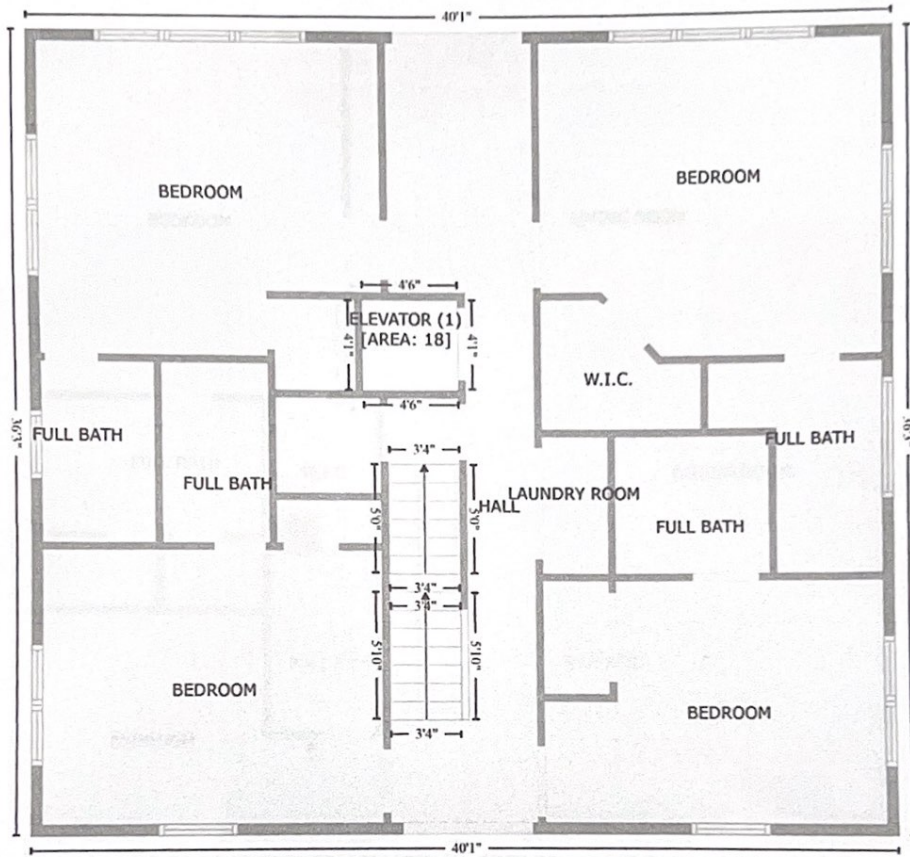


FLOOR 1  
 [AREA: 229]

Space	Area (sq. ft)	Calculation <small>Coordinate Polygon Area Algorithm using inches</small>
FLOOR 1 (Living area)	229	$-\left((359.2 + 359.2) * (73.5 - 416.6) + (359.2 + 257.8) * (416.6 - 416.6) + (257.8 + 257.8) * (416.6 - 170.4) + (257.8 + 304) * (170.4 - 170.4) + (304 + 304) * (170.4 - 131.9) + (304 + 257.8) * (131.9 - 131.9) + (257.8 + 257.8) * (131.9 - 73.5) + (257.8 + 359.2) * (73.5 - 73.5)\right) * 0.5 + 0.00694$
STORAGE (Non-living area)	65	$-\left((359.2 + 359.2) * (-18.2 - 73.5) + (359.2 + 257.8) * (73.5 - 73.5) + (257.8 + 257.8) * (73.5 - -18.2) + (257.8 + 359.2) * (-18.2 - -18.2)\right) * 0.5 + 0.00694$
ELEVATOR	12	$-\left((304 + 304) * (131.9 - 170.4) + (304 + 257.8) * (170.4 - 170.4) + (257.8 + 257.8) * (170.4 -$

Salter Path Road, Indian Beach North Carolina United States  
 Gross Living Area: 3384 sq. ft

FLOOR 2  
 [AREA: 1432]

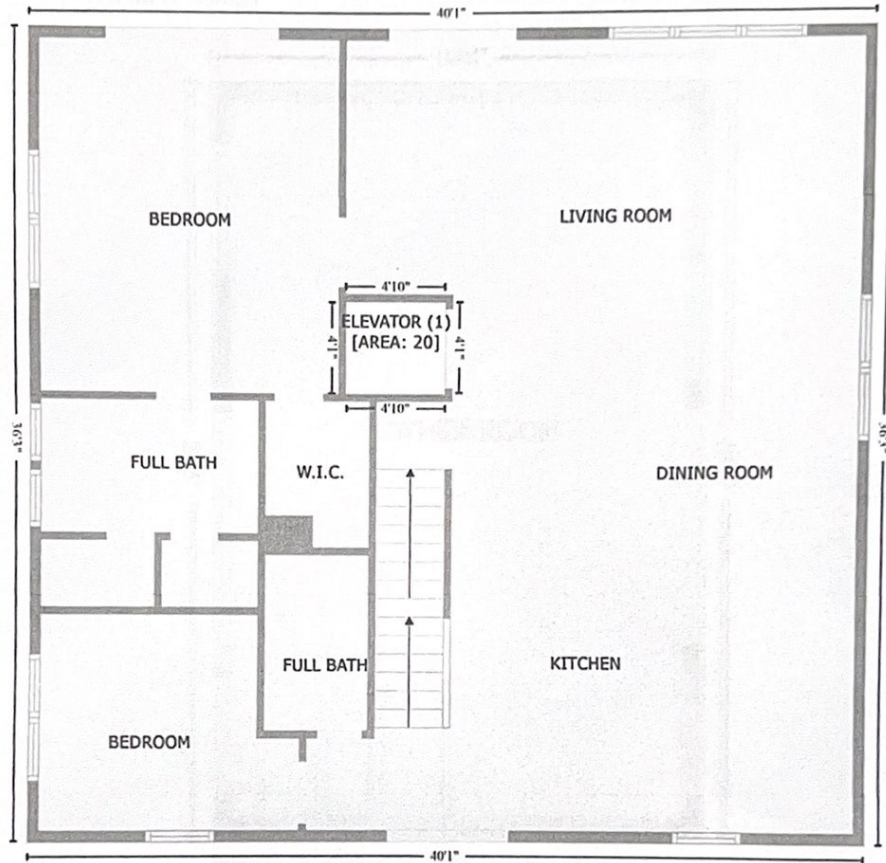


Space	Area (sq. ft)	Calculation <small>Coordinate Polygon Area Algorithm using inches</small>
FLOOR 2 (Living area)	1432	$-\left((523.9 + 523.9) * (0.1 - 435) + (523.9 + 43.4) * (435 - 435) + (43.4 + 43.4) * (435 - 0.1) + (43.4 + 523.9) * (0.1 - 0.1)\right) * 0.5 * 0.00694 - \left((281.7 + 227.7) * (143.5 - 143.5) + (227.7 + 227.7) * (143.5 - 192.5) + (227.7 + 281.7) * (192.5 - 192.5) + (281.7 + 281.7) * (192.5 - 143.5)\right) * 0.5 * 0.00694$
ELEVATOR (Non-living area)	18	$-\left((281.7 + 281.7) * (143.5 - 192.5) + (281.7 + 227.7) * (192.5 - 192.5) + (227.7 + 227.7) * (192.5 - 143.5) + (227.7 + 281.7) * (143.5 - 143.5)\right) * 0.5 * 0.00694$

Report generated on Wed, 10 Jul 2024 16:12:41 GMT.  
 Measurements and calculations are deemed highly reliable, but not guaranteed.

**Salter Path Road, Indian Beach North Carolina United States**  
 Gross Living Area: 3384 sq. ft

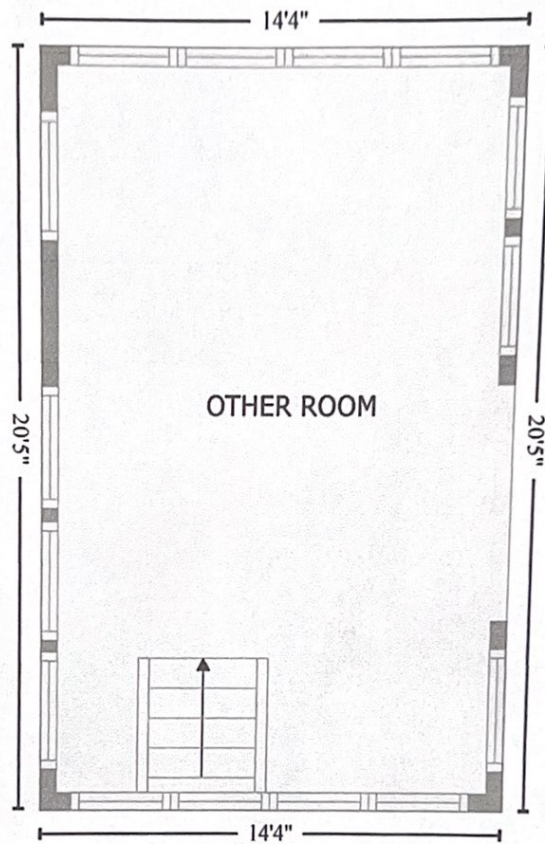
**FLOOR 3**  
**[AREA: 1431]**



Space	Area (sq. ft)	Calculation <small>Coordinate Polygon Area Algorithm using inches</small>
FLOOR 3 (Living area)	1431	$-\{(567.6 + 567.6) * (43.7 - 478.6) + (567.6 + 87.1) * (478.6 - 478.6) + (87.1 + 87.1) * (478.6 - 43.7) + (87.1 + 567.6) * (43.7 - 43.7)\} * 0.5 * 0.00694 + -\{(325.3 + 267.3) * (186.9 - 186.9) + (267.3 + 267.3) * (186.9 - 235.9) + (267.3 + 325.3) * (235.9 - 235.9) + (325.3 + 325.3) * (235.9 - 186.9)\} * 0.5 * 0.00694$
ELEVATOR (Non-living area)	20	$-\{(325.3 + 325.3) * (186.9 - 235.9) + (325.3 + 267.3) * (235.9 - 235.9) + (267.3 + 267.3) * (235.9 - 186.9) + (267.3 + 325.3) * (186.9 - 186.9)\} * 0.5 * 0.00694$

Salter Path Road, Indian Beach North Carolina United States  
 Gross Living Area: 3384 sq. ft

FLOOR 4  
 [AREA: 292]



Space	Area (sq. ft)	Calculation <small>Coordinate Polygon Area Algorithm using inches</small>
FLOOR 4 (Living area)	292	$-\left((375.5 + 375.5) * (41 - 285.7) + (375.5 + 203.6) * (285.7 - 285.7) + (203.6 + 203.6) * (285.7 - 41) + (203.6 + 375.5) * (41 - 41)\right) * 0.5 * 0.00694$

Report generated on Wed, 10 Jul 2024 16:13:41 GMT.  
 Measurements and calculations are deemed highly reliable, but not guaranteed.