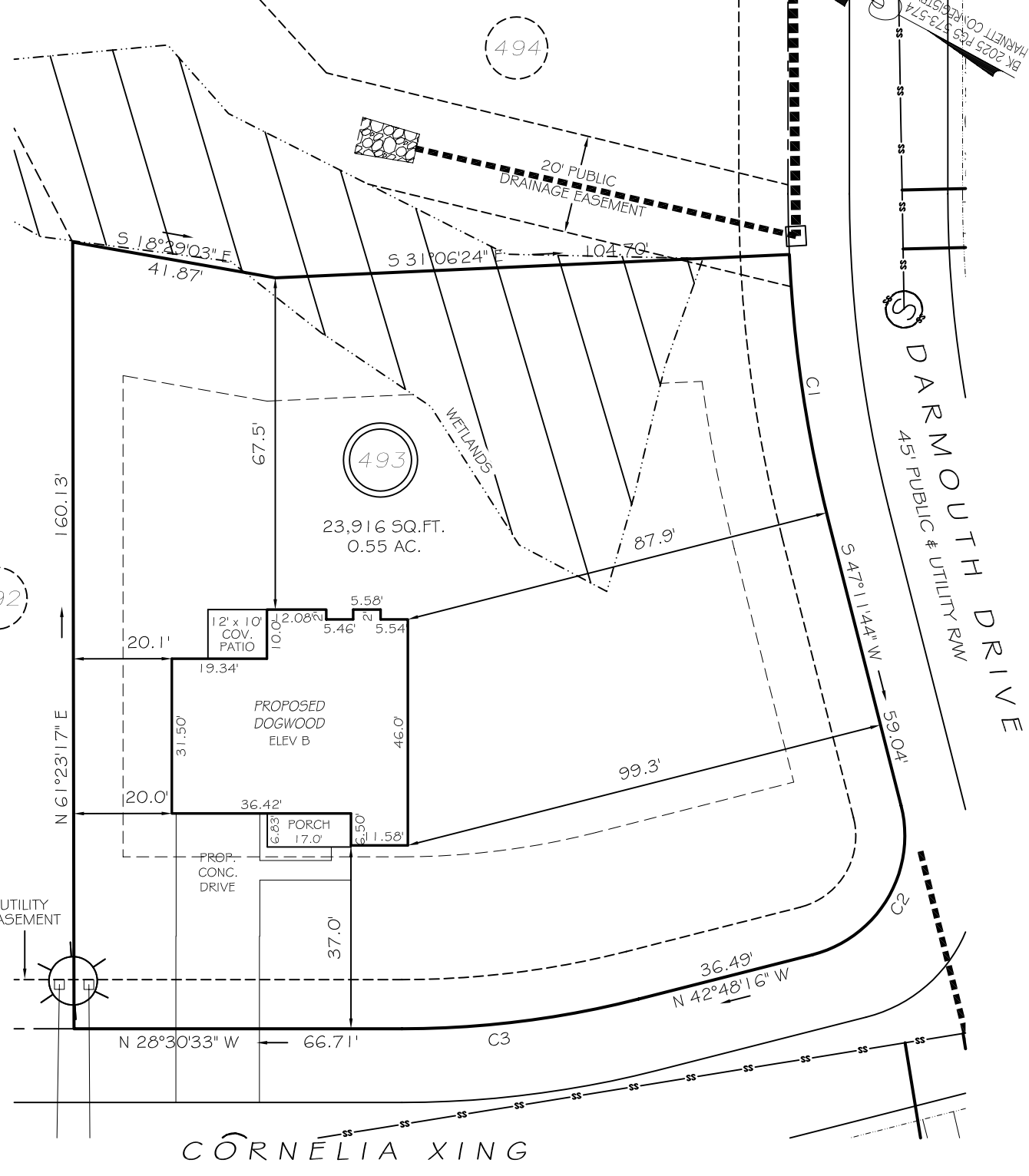


I, MICHAEL P. GRIFFIN, certify that under my direction and supervision this map was drawn from an actual field survey; that the error of closure of the survey as calculated by coordinates is 1: 10,000+; that the area shown hereon was calculated by coordinates. Dashed lines shown hereon were not surveyed.

Witness my hand and seal this day of MONTH 2026.

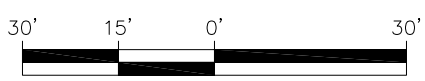
BK 2025 RES 573-574
HARNETT COUNTY



492

SETBACKS

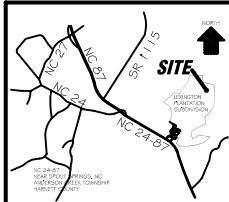
FRONT	35'
REAR	25'
SIDE (ONE SIDE)	5'
SIDE (ONE SIDE)	10'
CORNER SIDE	20'



C1 R=272.50' L=55.63' N53°02'40"E 55.54'
C2 R=25.00' L=39.27' S87°48'16"E 35.36'
C3 R=195.00' L=48.65' S35°39'24"E 48.53'

LEGEND

EIP	EXISTING IRON PIPE	FES	FLARED END SECTION
IPS	IRON PIPE SET	WM	WATER METER
R/W	RIGHT OF WAY	CO	CLEAN OUT
N/F	NOW OR FORMERLY	FH	FIRE HYDRANT
EIS	EXISTING IRON STAKE	CB	CATCH BASIN



P R E L I M I N A R Y
NOT FOR RECORDATION,
SALES OR CONVEYANCE



GRIFFIN LAND SURVEYING, INC.

P. O. BOX 148
FUQUAY-VARINA, NC 27526
(919) - 567 - 1963

PLOT PLAN
FOR
DREAM FINDERS HOMES, LLC

LEXINGTON PLANTATION

LOT 493

CORNELIA XING

NORTH CAROLINA

HARNETT COUNTY ANDERSON CREEK TOWNSHIP

DRAWN BY **KDF**

DATE **1/2/26**

CHECKED BY **MPG**

SCALE **1" = 30'**