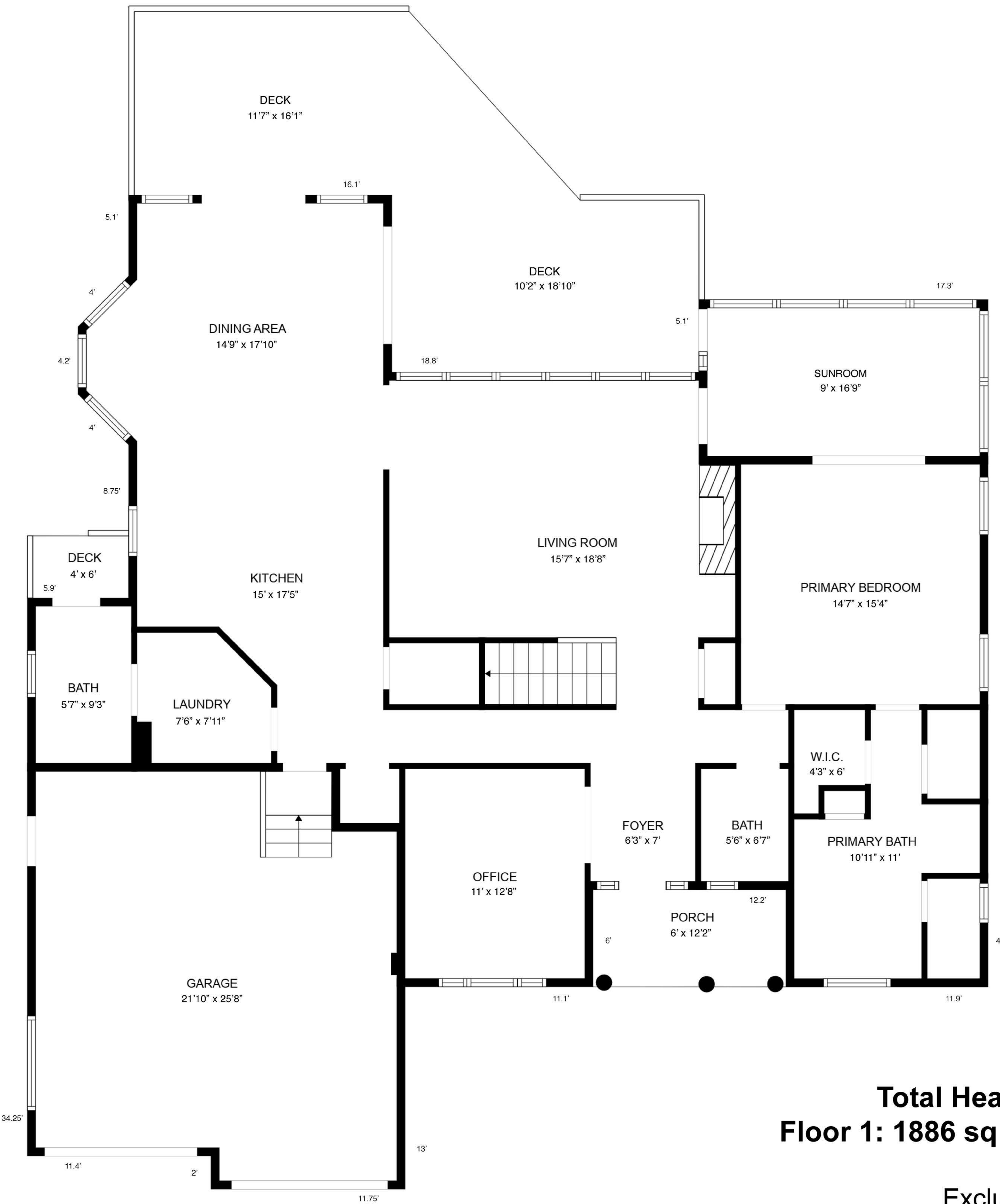
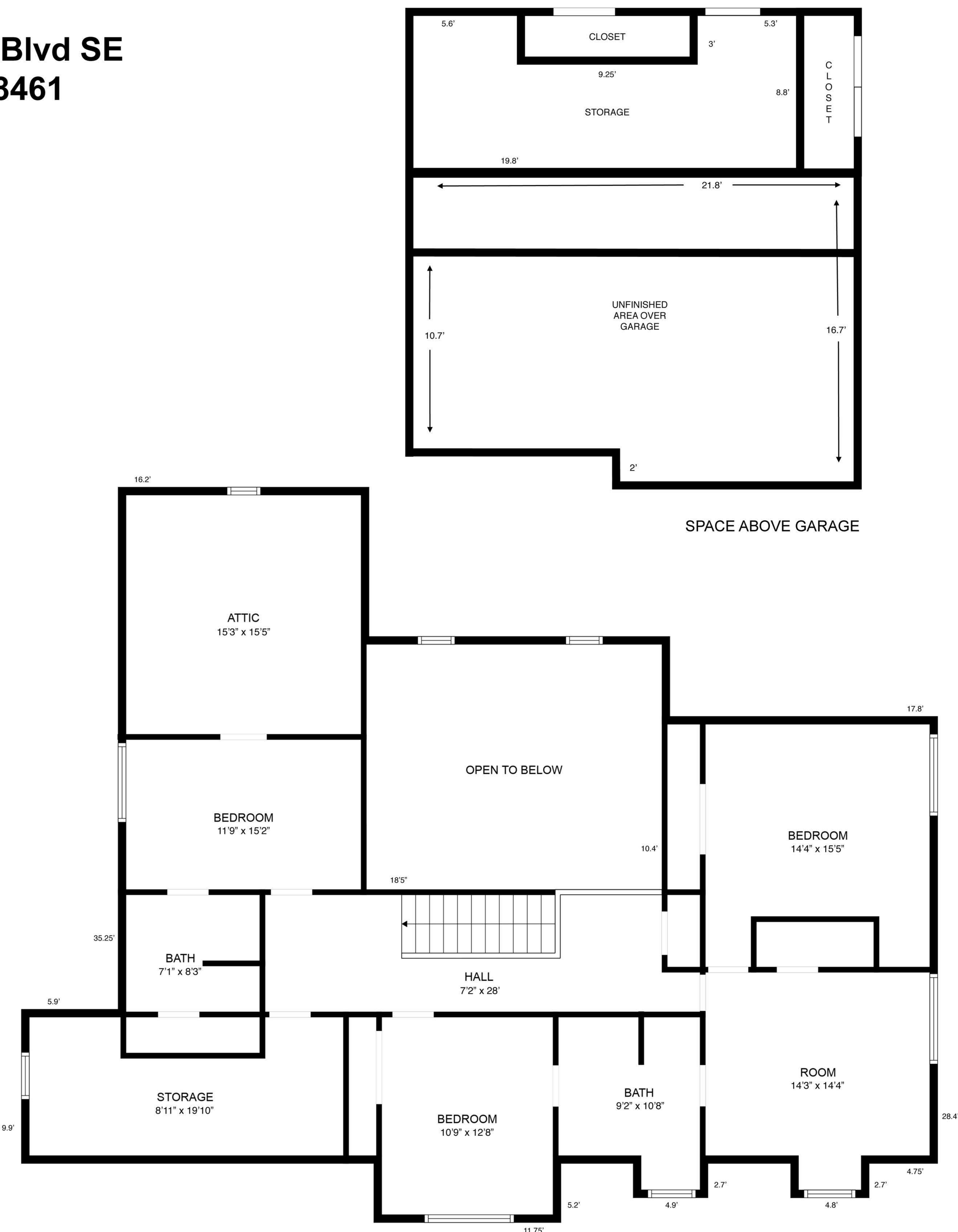


3609 Members Club Blvd SE Southport, NC 28461



FLOOR 1



FLOOR 2

Total Heated: 3163 sq ft.
Floor 1: 1886 sq ft. Floor 2: 1277 sq ft.

Excluded Areas:
 Sunroom: 151 sq ft. Unfinished area above garage: 341 sq ft. Garage: 567 sq ft.
 Attic: 235 sq ft. Front porch: 73 sq ft. Back porch: 24 sq ft. Deck: 446 sq ft. Storage: 148 sq ft.

MEASUREMENTS DEEMED HIGHLY RELIABLE BUT NOT GUARANTEED