

ACRES IN TRACT (D.B. 1953, P. 9749; 1538
ACRES IN SUBDIVISION; 1035

HERBERT CENTER THAT STREETS, UTILITIES, AND OTHER IMPROVEMENTS HAVE BEEN
MADE AND ARE TO REMAIN IN THE SUBDIVISION ENTITLED "PROPERTY OF LEROY EVERETTE
EVENTS", OR THAT A SECURITY BOND OR ASSOCIATE LETTER OF CREDIT IN THE
AMOUNT OF \$100,000.00 HAS BEEN PLACED WITH BEAUFORT COUNTY TO ENSURE
THE INSTALLATION THEREOF.

5/25/24
COUNTY MANAGER

MAGNETIC
SLIP CASE
SLIDES 36-5

THIS SUBDIVISION IS IN THE 60' TO 70' TYPICAL
WIDTH OF THE HIGH WATER MARK OF THE PUNNO RIVER
AND IS NOT TO BE CONSIDERED AS A PART OF THE
RIVER CHANNEL.



ELIZABETH P. SLOAN
D.B. 824, P. 804
D.B. 594, P. 81
D.B. 294, P. 385 (COVEYANTS)

HOOD POND ASSOCIATION, P.L.S. L-2227 PROFESSIONAL CORP. - C-578
THIS IS A DIVISION OF LAND
IN ACCORDANCE WITH THE
PLAT CASE, D.B. 594, P. 81
AND D.B. 294, P. 385 (COVEYANTS)

I HEREBY CERTIFY THAT THE SUBDIVISION ENTITLED "PROPERTY OF LEROY EVERETTE,
SR. & CAROLYN BEAMAN EVERETTE" CONSIST OF 14 LOTS, OF WHICH 14 ARE
ACRES IN TRACT (D.B. 1953, P. 9749; 1538 ACRES IN SUBDIVISION; 1035
ACRES IN TRACT) AND ARE TO REMAIN IN THE SUBDIVISION ENTITLED "PROPERTY
OF LEROY EVERETTE, SR. & CAROLYN BEAMAN EVERETTE" AS SHOWN ON THE MAP AND THAT THE SHOW OF COUSINS
OF 110,000 AS CALCULATED BY LATITUDES AND DEPARTURES THAT THIS MAP
DISTRIBUTION OTHER THAN AS SHOWN ON THIS MAP IS NOT TO BE CONSIDERED AS
ABOUT 6.5-6.7-30, SECTION 1, T. 17, N. 11, S. 10, R. 10, E. 1, AS SHOWN ON THE
MAP NOT SURVEYED, WITNESS MY HAND AND SEAL, ON THIS 15TH DAY OF
MAY 2024.

BEAUFORT COUNTY HEALTH DIRECTOR OR
DESIGNEE WHO SHALL BE AN AUTHORIZED OFFICER OF THE STATE
HEALTH DEPARTMENT

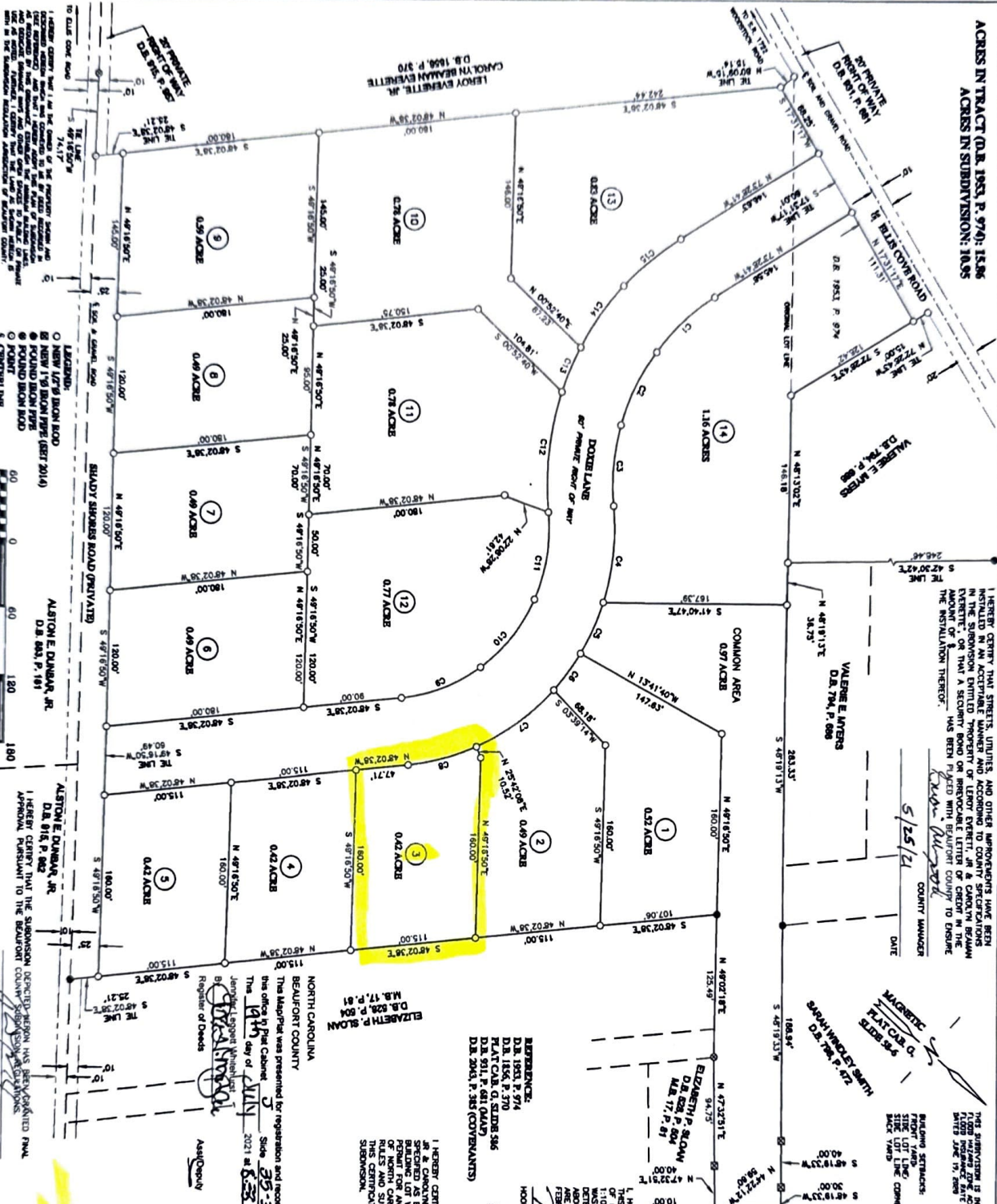
BEAUFORT COUNTY HEALTH DIRECTOR OR
DESIGNEE WHO SHALL BE AN AUTHORIZED OFFICER OF THE STATE
HEALTH DEPARTMENT

DATE: 05/23/2024

PROPERTY OF:
LEROY EVERETTE, JR. &
CAROLYN BEAMAN EVERETTE
NORTH CAROLINA
BEAUFORT COUNTY

SCALE: 1" = 60'
SURVEY DATE: MARCH 28, 2018
SHEETED BY: HOOD POND ASSOCIATION, P.L.S.
110 WEST 2ND STREET
MORNING STAR, NC 28570
PHONE: (252) 755-1222

PC-5 S-35-3



LEROY EVERETTE, JR. & CAROLYN BEAMAN EVERETTE
D.B. 1953, P. 9749; 1538
ACRES IN TRACT

VALERIE E. LAYERS
D.B. 794, P. 688
D.B. 794, P. 688

COMMON AREA
0.97 ACRES

ELIZABETH P. SLOAN
D.B. 824, P. 804
D.B. 594, P. 81
D.B. 294, P. 385 (COVEYANTS)

HOOD POND ASSOCIATION, P.L.S. L-2227 PROFESSIONAL CORP. - C-578
THIS IS A DIVISION OF LAND
IN ACCORDANCE WITH THE
PLAT CASE, D.B. 594, P. 81
AND D.B. 294, P. 385 (COVEYANTS)

BEAUFORT COUNTY HEALTH DIRECTOR OR
DESIGNEE WHO SHALL BE AN AUTHORIZED OFFICER OF THE STATE
HEALTH DEPARTMENT

DATE: 05/23/2024

PROPERTY OF:
LEROY EVERETTE, JR. &
CAROLYN BEAMAN EVERETTE
NORTH CAROLINA
BEAUFORT COUNTY

SCALE: 1" = 60'
SURVEY DATE: MARCH 28, 2018
SHEETED BY: HOOD POND ASSOCIATION, P.L.S.
110 WEST 2ND STREET
MORNING STAR, NC 28570
PHONE: (252) 755-1222

PC-5 S-35-3