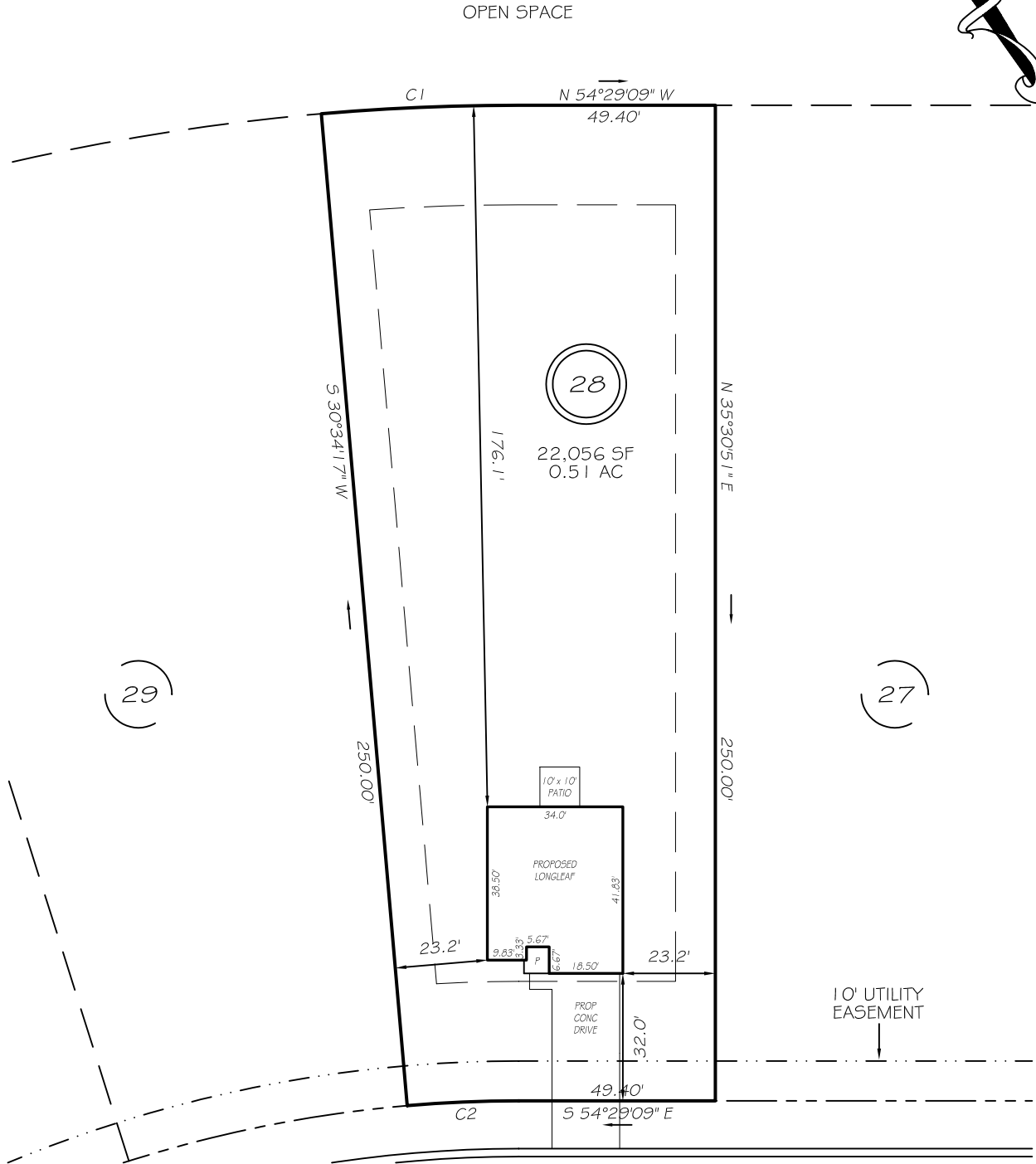
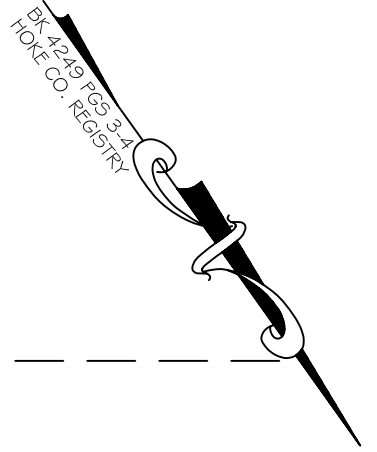


I, MICHAEL P. GRIFFIN, certify that under my direction and supervision this map was drawn from an actual field survey; that the error of closure of the survey as calculated by coordinates is 1: 10,000+; that the area shown hereon was calculated by coordinates. Dashed lines shown hereon were not surveyed.

Witness my hand and seal this day of MONTH 2025.



ASHLEY HEIGHTS DRIVE

IMPERVIOUS AREAS 50' PUBLIC RW

HOUSE	1392 SQ. FT.
DRIVE & WALKS	567 SQ. FT.
PATIO	100 SQ. FT.
TOTAL	2059 SQ. FT.
ALLOWED	4000 SQ. FT.



GRAPHIC SCALE
1"=40'

SETBACKS

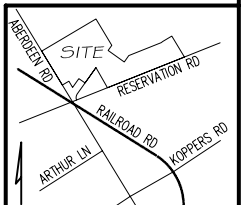
FRONT	30'
REAR	25'
SIDE	10'

C1 R=575.00' L=49.60' S56°57'26"E 49.59'
C2 R=325.00' L=28.04' S56°57'26"E 28.03'

PRELIMINARY
NOT FOR RECORDATION,
SALES OR CONVEYANCE

LEGEND

EIP	EXISTING IRON PIPE	FES	FLARED END SECTION
RBS	REBAR SET	WM	WATER METER
R/W	RIGHT OF WAY	CO	CLEAN OUT
N/F	NOW OR FORMERLY	FH	FIRE HYDRANT
EIS	EXISTING IRON STAKE	CB	CATCH BASIN



GLS GRIFFIN LAND SURVEYING, INC.
P.O. BOX 148
FUQUAY-VARINA, NC 27526
(919) - 567 - 1963
FIRM LIC.# C-1345

PLOT PLAN
FOR
BEN STOUT
CONSTRUCTION
ASHLEY HEIGHTS SUBDIVISION
LOT 28
ASHLEY HEIGHTS DRIVE
ABERDEEN, N.C.
HOKE COUNTY QUEWHIFFLE TOWNSHIP

DRAWN BY KDF	DATE 4/17/25
CHECKED BY MPG	SCALE 1" = 40'