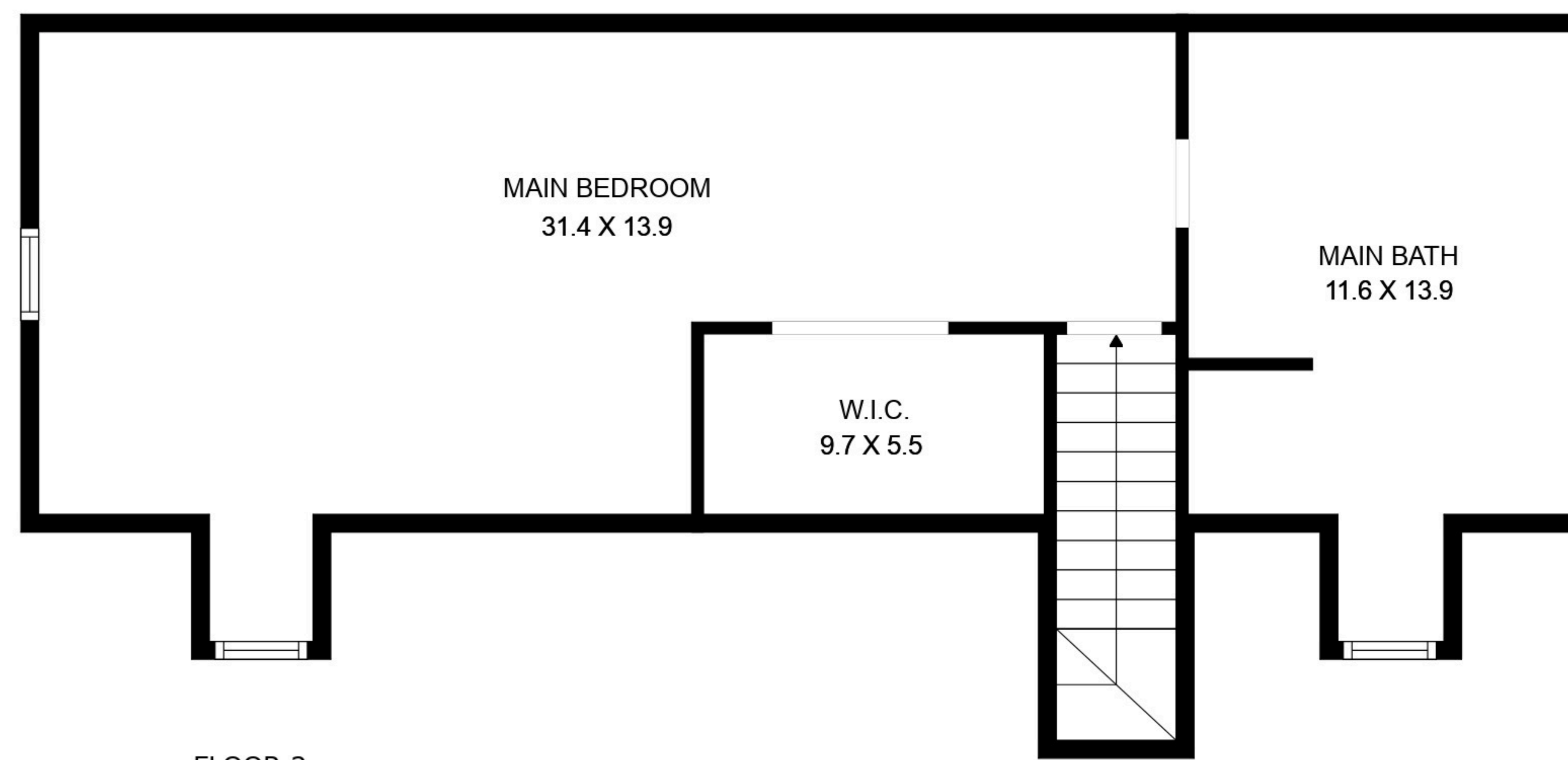
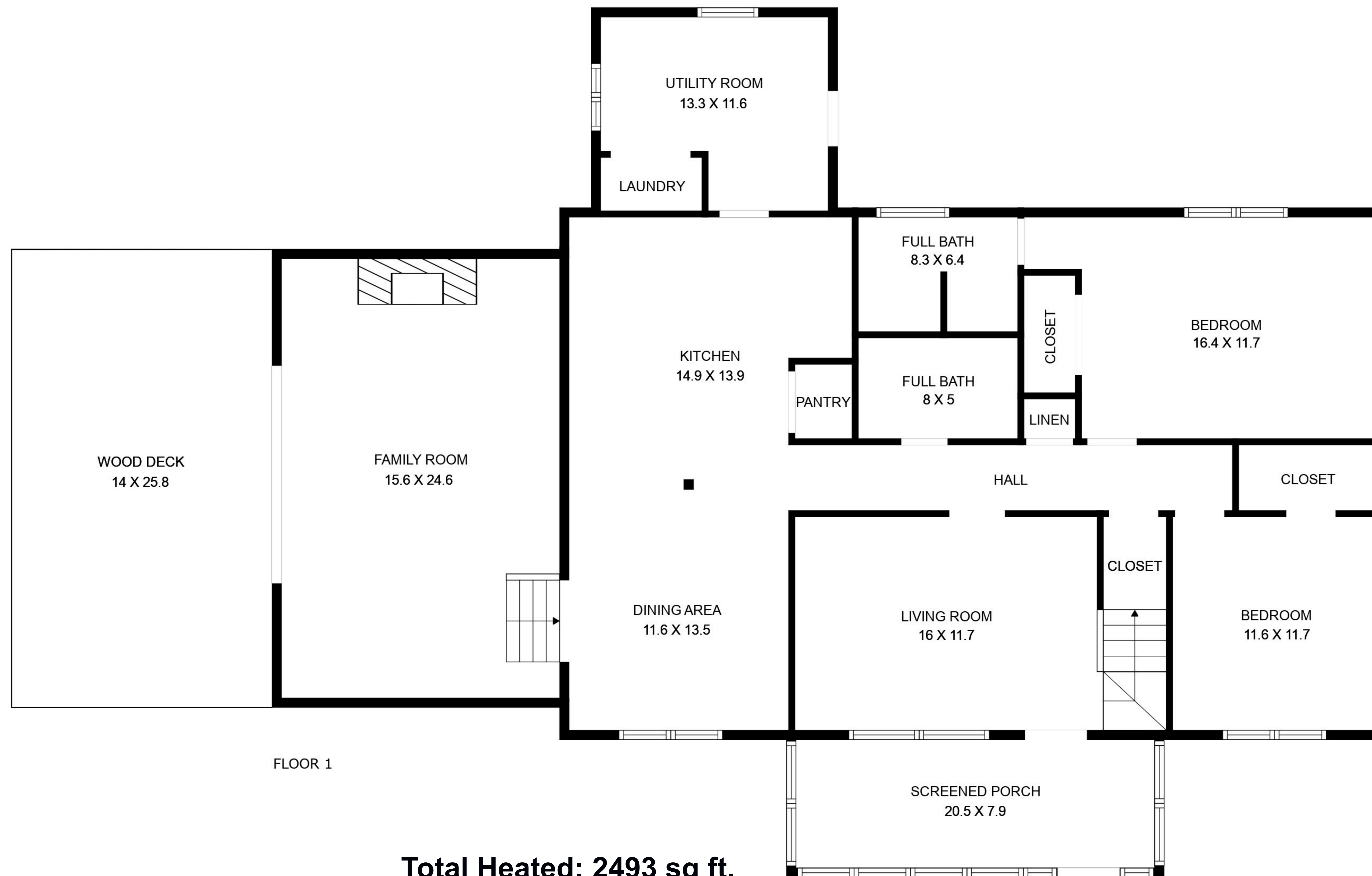


**278 Batson Rd
Hampstead, NC 28443**



FLOOR 2



FLOOR 1

Total Heated: 2493 sq ft.

Floor 1: 1858 sq ft. Floor 2: 635 sq ft.

Excluded Areas: Screened Porch: 162 sq ft. Deck: 361 sq ft.

(Displayed on Page 2): Detached Garage: 784 sq ft. Finished Area above Garage: 784 sq ft. Car Port: 366 sq ft.

Workshop: 126 sq ft. Storage 100 sq ft. Cov Porch: 73 sq ft. Studio: 194 sq ft.