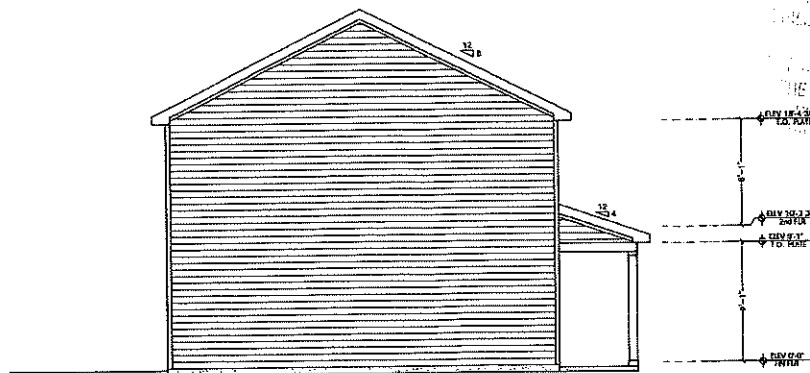




FRONT ELEVATION
1/4" = 1'-0"



LEFT SIDE ELEVATION
1/4" = 1'-0"

Construction Copy
P. 2.5.21
9/22/22 Phoenyx, AZ

Grand Oak
HOMES
MyGrandOakHome.com
919-556-1700
10501 W. STATE ST., SUITE 100
YORK BEACH, NC 27986

The SHEELY
ELEVATION B

INVENTORY
COUNTRYSIDE FARMS, HOMESITE 03

THESE DOCUMENTS CERTIFY THAT THEY ARE SUITABLE FOR ISSUANCE AND THAT THE DESIGNER HAS REMAINED RESPONSIBLE FOR THE ACCURACY OF THE DOCUMENTS. IT IS THE RESPONSIBILITY OF THE CONTRACTOR TO VERIFY THAT THE CONSTRUCTION OF THE PROJECT COMPLIES WITH THE APPLICABLE CODES. THE RESPONSIBILITIES OF THE DESIGNERS OR THE CONTRACTOR ARE LIMITED TO THE BUILDING PROGRAM AND THE BUILDING REGULATIONS.

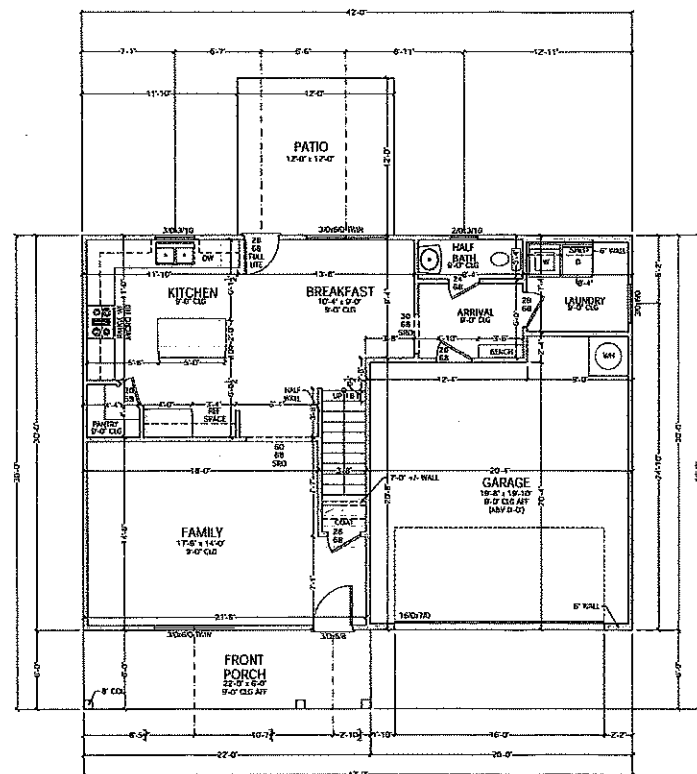
PLAN NUMBER: 2-2001-2016-4-3.5-9-07

DATE	REV	BY
12-10-24	1	CS
12-19-24	2	CS
01-03-25	3	CS

SHEET 1

CONTRACT 2022
6/10/24/2022

The Plan and Design are the property of Grand Oak Homes, LLC. All rights reserved. These documents shall not be used for any other project without the written consent of Grand Oak Homes, LLC. These plans are not to be copied or reproduced in any way without the written consent of Grand Oak Homes, LLC. These drawings are not intended to be used for any other project without the written consent of Grand Oak Homes, LLC. These drawings are not intended to be used for any other project without the written consent of Grand Oak Homes, LLC. THESE DRAWINGS ARE NOT TO BE USED FOR ANY OTHER PROJECT WITHOUT THE WRITTEN CONSENT OF GRAND OAK HOMES, LLC.



- ABBREVIATIONS**
- AMP AMP
 - APF ABOVE FINISHED FLOOR
 - ARM ARM
 - BD BATH
 - BLD BLDG
 - BSG BATH AND BATH
 - CL CL
 - CLC CLC
 - CLD CLD
 - CLF CLF
 - CLG CLG
 - CLH CLH
 - CLL CLL
 - CLM CLM
 - CLN CLN
 - CLP CLP
 - CLQ CLQ
 - CLR CLR
 - CLS CLS
 - CLT CLT
 - CLU CLU
 - CLV CLV
 - CLW CLW
 - CLX CLX
 - CLY CLY
 - CLZ CLZ
 - CLAA CLAA
 - CLAB CLAB
 - CLAC CLAC
 - CLAD CLAD
 - CLAE CLAE
 - CLAF CLAF
 - CLAG CLAG
 - CLAH CLAH
 - CLAI CLAI
 - CLAJ CLAJ
 - CLAK CLAK
 - CLAL CLAL
 - CLAM CLAM
 - CLAN CLAN
 - CLAO CLAO
 - CLAP CLAP
 - CLAQ CLAQ
 - CLAR CLAR
 - CLAS CLAS
 - CLAT CLAT
 - CLAU CLAU
 - CLAV CLAV
 - CLAW CLAW
 - CLAX CLAX
 - CLAY CLAY
 - CLAZ CLAZ
 - CLBA CLBA
 - CLBB CLBB
 - CLBC CLBC
 - CLBD CLBD
 - CLBE CLBE
 - CLBF CLBF
 - CLBG CLBG
 - CLBH CLBH
 - CLBI CLBI
 - CLBJ CLBJ
 - CLBK CLBK
 - CLBL CLBL
 - CLBM CLBM
 - CLBN CLBN
 - CLBO CLBO
 - CLBP CLBP
 - CLBQ CLBQ
 - CLBR CLBR
 - CLBS CLBS
 - CLBT CLBT
 - CLBU CLBU
 - CLBV CLBV
 - CLBW CLBW
 - CLBX CLBX
 - CLBY CLBY
 - CLBZ CLBZ
 - CLCA CLCA
 - CLCB CLCB
 - CLCC CLCC
 - CLCD CLCD
 - CLCE CLCE
 - CLCF CLCF
 - CLCG CLCG
 - CLCH CLCH
 - CLCI CLCI
 - CLCJ CLCJ
 - CLCK CLCK
 - CLCL CLCL
 - CLCM CLCM
 - CLCN CLCN
 - CLCO CLCO
 - CLCP CLCP
 - CLCQ CLCQ
 - CLCR CLCR
 - CLCS CLCS
 - CLCT CLCT
 - CLCU CLCU
 - CLCV CLCV
 - CLCW CLCW
 - CLCX CLCX
 - CLCY CLCY
 - CLCZ CLCZ
 - CLDA CLDA
 - CLDB CLDB
 - CLDC CLDC
 - CLDD CLDD
 - CLDE CLDE
 - CLDF CLDF
 - CLDG CLDG
 - CLDH CLDH
 - CLDI CLDI
 - CLDJ CLDJ
 - CLDK CLDK
 - CLDL CLDL
 - CLDM CLDM
 - CLDN CLDN
 - CLDO CLDO
 - CLDP CLDP
 - CLDQ CLDQ
 - CLDR CLDR
 - CLDS CLDS
 - CLDT CLDT
 - CLDU CLDU
 - CLDV CLDV
 - CLDW CLDW
 - CLDX CLDX
 - CLDY CLDY
 - CLDZ CLDZ
 - CLEA CLEA
 - CLEB CLEB
 - CLEC CLEC
 - CLED CLED
 - CLEF CLEF
 - CLEG CLEG
 - CLEH CLEH
 - CLEI CLEI
 - CLEJ CLEJ
 - CLEK CLEK
 - CLEL CLEL
 - CLEM CLEM
 - CLEN CLEN
 - CLEO CLEO
 - CLEP CLEP
 - CLEQ CLEQ
 - CLER CLER
 - CLES CLES
 - CLET CLET
 - CLEU CLEU
 - CLFV CLFV
 - CLFW CLFW
 - CLFX CLFX
 - CLFY CLFY
 - CLFZ CLFZ
 - CLGA CLGA
 - CLGB CLGB
 - CLGC CLGC
 - CLGD CLGD
 - CLGE CLGE
 - CLGF CLGF
 - CLGG CLGG
 - CLGH CLGH
 - CLGI CLGI
 - CLGJ CLGJ
 - CLGK CLGK
 - CLGL CLGL
 - CLGM CLGM
 - CLGN CLGN
 - CLGO CLGO
 - CLGP CLGP
 - CLGQ CLGQ
 - CLGR CLGR
 - CLGS CLGS
 - CLGT CLGT
 - CLGU CLGU
 - CLGV CLGV
 - CLGW CLGW
 - CLGX CLGX
 - CLGY CLGY
 - CLGZ CLGZ
 - CLHA CLHA
 - CLHB CLHB
 - CLHC CLHC
 - CLHD CLHD
 - CLHE CLHE
 - CLHF CLHF
 - CLHG CLHG
 - CLHI CLHI
 - CLHJ CLHJ
 - CLHK CLHK
 - CLHL CLHL
 - CLHM CLHM
 - CLHN CLHN
 - CLHO CLHO
 - CLHP CLHP
 - CLHQ CLHQ
 - CLHR CLHR
 - CLHS CLHS
 - CLHT CLHT
 - CLHU CLHU
 - CLHV CLHV
 - CLHW CLHW
 - CLHX CLHX
 - CLHY CLHY
 - CLHZ CLHZ
 - CLIA CLIA
 - CLIB CLIB
 - CLIC CLIC
 - CLID CLID
 - CLIE CLIE
 - CLIF CLIF
 - CLIG CLIG
 - CLIH CLIH
 - CLIJ CLIJ
 - CLIK CLIK
 - CLIL CLIL
 - CLIM CLIM
 - CLIN CLIN
 - CLIO CLIO
 - CLIP CLIP
 - CLIQ CLIQ
 - CLIR CLIR
 - CLIS CLIS
 - CLIT CLIT
 - CLIU CLIU
 - CLIV CLIV
 - CLIW CLIW
 - CLIX CLIX
 - CLIY CLIY
 - CLIZ CLIZ
 - CLJA CLJA
 - CLJB CLJB
 - CLJC CLJC
 - CLJD CLJD
 - CLJE CLJE
 - CLJF CLJF
 - CLJG CLJG
 - CLJH CLJH
 - CLJI CLJI
 - CLJJ CLJJ
 - CLJK CLJK
 - CLJL CLJL
 - CLJM CLJM
 - CLJN CLJN
 - CLJO CLJO
 - CLJP CLJP
 - CLJQ CLJQ
 - CLJR CLJR
 - CLJS CLJS
 - CLJT CLJT
 - CLJU CLJU
 - CLJV CLJV
 - CLJW CLJW
 - CLJX CLJX
 - CLJY CLJY
 - CLJZ CLJZ
 - CLKA CLKA
 - CLKB CLKB
 - CLKC CLKC
 - CLKD CLKD
 - CLKE CLKE
 - CLKF CLKF
 - CLKG CLKG
 - CLKH CLKH
 - CLKI CLKI
 - CLKJ CLKJ
 - CLKK CLKK
 - CLKL CLKL
 - CLKM CLKM
 - CLKN CLKN
 - CLKO CLKO
 - CLKP CLKP
 - CLKQ CLKQ
 - CLKR CLKR
 - CLKS CLKS
 - CLKT CLKT
 - CLKU CLKU
 - CLKV CLKV
 - CLKW CLKW
 - CLKX CLKX
 - CLKY CLKY
 - CLKZ CLKZ
 - CLLA CLLA
 - CLLB CLLB
 - CLLC CLLC
 - CLLD CLLD
 - CLLE CLLE
 - CLLF CLLF
 - CLLG CLLG
 - CLLH CLLH
 - CLLI CLLI
 - CLLJ CLLJ
 - CLLK CLLK
 - CLLL CLLL
 - CLLM CLLM
 - CLLN CLLN
 - CLLO CLLO
 - CLLP CLLP
 - CLLQ CLLQ
 - CLLR CLLR
 - CLLS CLLS
 - CLLT CLLT
 - CLLU CLLU
 - CLLV CLLV
 - CLLW CLLW
 - CLLX CLLX
 - CLLY CLLY
 - CLLZ CLLZ
 - CLMA CLMA
 - CLMB CLMB
 - CLMC CLMC
 - CLMD CLMD
 - CLME CLME
 - CLMF CLMF
 - CLMG CLMG
 - CLMH CLMH
 - CLMI CLMI
 - CLMJ CLMJ
 - CLMK CLMK
 - CLML CLML
 - CLMN CLMN
 - CLMO CLMO
 - CLMP CLMP
 - CLMQ CLMQ
 - CLMR CLMR
 - CLMS CLMS
 - CLMT CLMT
 - CLMU CLMU
 - CLMV CLMV
 - CLMW CLMW
 - CLMX CLMX
 - CLMY CLMY
 - CLMZ CLMZ
 - CLNA CLNA
 - CLNB CLNB
 - CLNC CLNC
 - CLND CLND
 - CLNE CLNE
 - CLNF CLNF
 - CLNG CLNG
 - CLNH CLNH
 - CLNI CLNI
 - CLNJ CLNJ
 - CLNK CLNK
 - CLNL CLNL
 - CLNM CLNM
 - CLNO CLNO
 - CLNP CLNP
 - CLNQ CLNQ
 - CLNR CLNR
 - CLNS CLNS
 - CLNT CLNT
 - CLNU CLNU
 - CLNV CLNV
 - CLNW CLNW
 - CLNX CLNX
 - CLNY CLNY
 - CLNZ CLNZ
 - CLOA CLOA
 - CLOB CLOB
 - CLOC CLOC
 - CLOD CLOD
 - CLOE CLOE
 - CLOF CLOF
 - CLOG CLOG
 - CLOH CLOH
 - CLOI CLOI
 - CLOJ CLOJ
 - CLOK CLOK
 - CLOL CLOL
 - CLOM CLOM
 - CLON CLON
 - CLOO CLOO
 - CLOP CLOP
 - CLOQ CLOQ
 - CLOR CLOR
 - CLOS CLOS
 - CLOT CLOT
 - CLOU CLOU
 - CLOV CLOV
 - CLOW CLOW
 - CLOX CLOX
 - CLOY CLOY
 - CLOZ CLOZ
 - CLPA CLPA
 - CLPB CLPB
 - CLPC CLPC
 - CLPD CLPD
 - CLPE CLPE
 - CLPF CLPF
 - CLPG CLPG
 - CLPH CLPH
 - CLPI CLPI
 - CLPJ CLPJ
 - CLPK CLPK
 - CLPL CLPL
 - CLPN CLPN
 - CLPO CLPO
 - CLPP CLPP
 - CLPQ CLPQ
 - CLPR CLPR
 - CLPS CLPS
 - CLPT CLPT
 - CLPU CLPU
 - CLPV CLPV
 - CLPW CLPW
 - CLPX CLPX
 - CLPY CLPY
 - CLPZ CLPZ
 - CLQA CLQA
 - CLQB CLQB
 - CLQC CLQC
 - CLQD CLQD
 - CLQE CLQE
 - CLQF CLQF
 - CLQG CLQG
 - CLQH CLQH
 - CLQI CLQI
 - CLQJ CLQJ
 - CLQK CLQK
 - CLQL CLQL
 - CLQM CLQM
 - CLQN CLQN
 - CLQO CLQO
 - CLQP CLQP
 - CLQQ CLQQ
 - CLQR CLQR
 - CLQS CLQS
 - CLQT CLQT
 - CLQU CLQU
 - CLQV CLQV
 - CLQW CLQW
 - CLQX CLQX
 - CLQY CLQY
 - CLQZ CLQZ
 - CLRA CLRA
 - CLRB CLRB
 - CLRC CLRC
 - CLRD CLRD
 - CLRE CLRE
 - CLRF CLRF
 - CLRG CLRG
 - CLRH CLRH
 - CLRI CLRI
 - CLRJ CLRJ
 - CLRK CLRK
 - CLRL CLRL
 - CLRM CLRM
 - CLRN CLRN
 - CLRO CLRO
 - CLRP CLRP
 - CLRQ CLRQ
 - CLRR CLRR
 - CLRS CLRS
 - CLRT CLRT
 - CLRU CLRU
 - CLRV CLRV
 - CLRW CLRW
 - CLRX CLRX
 - CLRY CLRY
 - CLRZ CLRZ
 - CLSA CLSA
 - CLSB CLSB
 - CLSC CLSC
 - CLSD CLSD
 - CLSE CLSE
 - CLSF CLSF
 - CLSG CLSG
 - CLSH CLSH
 - CLSI CLSI
 - CLSJ CLSJ
 - CLSK CLSK
 - CLSL CLSL
 - CLSM CLSM
 - CLSN CLSN
 - CLSO CLSO
 - CLSP CLSP
 - CLSQ CLSQ
 - CLSR CLSR
 - CLSS CLSS
 - CLST CLST
 - CLSU CLSU
 - CLSV CLSV
 - CLSW CLSW
 - CLSX CLSX
 - CLSY CLSY
 - CLSZ CLSZ
 - CLTA CLTA
 - CLTB CLTB
 - CLTC CLTC
 - CLTD CLTD
 - CLTE CLTE
 - CLTF CLTF
 - CLTG CLTG
 - CLTH CLTH
 - CLTI CLTI
 - CLTJ CLTJ
 - CLTK CLTK
 - CLTL CLTL
 - CLTM CLTM
 - CLTN CLTN
 - CLTO CLTO
 - CLTP CLTP
 - CLTQ CLTQ
 - CLTR CLTR
 - CLTS CLTS
 - CLTT CLTT
 - CLTU CLTU
 - CLTV CLTV
 - CLTW CLTW
 - CLTX CLTX
 - CLTY CLTY
 - CLTZ CLTZ
 - CLUA CLUA
 - CLUB CLUB
 - CLUC CLUC
 - CLUD CLUD
 - CLUE CLUE
 - CLUF CLUF
 - CLUG CLUG
 - CLUH CLUH
 - CLUI CLUI
 - CLUJ CLUJ
 - CLUK CLUK
 - CLUL CLUL
 - CLUM CLUM
 - CLUN CLUN
 - CLUO CLUO
 - CLUP CLUP
 - CLUQ CLUQ
 - CLUR CLUR
 - CLUS CLUS
 - CLUT CLUT
 - CLUU CLUU
 - CLUV CLUV
 - CLUW CLUW
 - CLUX CLUX
 - CLUY CLUY
 - CLUZ CLUZ
 - CLVA CLVA
 - CLVB CLVB
 - CLVC CLVC
 - CLVD CLVD
 - CLVE CLVE
 - CLVF CLVF
 - CLVG CLVG
 - CLVH CLVH
 - CLVI CLVI
 - CLVJ CLVJ
 - CLVK CLVK
 - CLVL CLVL
 - CLVM CLVM
 - CLVN CLVN
 - CLVO CLVO
 - CLVP CLVP
 - CLVQ CLVQ
 - CLVR CLVR
 - CLVS CLVS
 - CLVT CLVT
 - CLVU CLVU
 - CLVV CLVV
 - CLVW CLVW
 - CLVX CLVX
 - CLVY CLVY
 - CLVZ CLVZ
 - CLWA CLWA
 - CLWB CLWB
 - CLWC CLWC
 - CLWD CLWD
 - CLWE CLWE
 - CLWF CLWF
 - CLWG CLWG
 - CLWH CLWH
 - CLWI CLWI
 - CLWJ CLWJ
 - CLWK CLWK
 - CLWL CLWL
 - CLWM CLWM
 - CLWN CLWN
 - CLWO CLWO
 - CLWP CLWP
 - CLWQ CLWQ
 - CLWR CLWR
 - CLWS CLWS
 - CLWT CLWT
 - CLWU CLWU
 - CLWV CLWV
 - CLWW CLWW
 - CLWX CLWX
 - CLWY CLWY
 - CLWZ CLWZ
 - CLXA CLXA
 - CLXB CLXB
 - CLXC CLXC
 - CLXD CLXD
 - CLXE CLXE
 - CLXF CLXF
 - CLXG CLXG
 - CLXH CLXH
 - CLXI CLXI
 - CLXJ CLXJ
 - CLXK CLXK
 - CLXL CLXL
 - CLXM CLXM
 - CLXN CLXN
 - CLXO CLXO
 - CLXP CLXP
 - CLXQ CLXQ
 - CLXR CLXR
 - CLXS CLXS
 - CLXT CLXT
 - CLXU CLXU
 - CLXV CLXV
 - CLXW CLXW
 - CLXX CLXX
 - CLXY CLXY
 - CLXZ CLXZ
 - CLYA CLYA
 - CLYB CLYB
 - CLYC CLYC
 - CLYD CLYD
 - CLYE CLYE
 - CLYF CLYF
 - CLYG CLYG
 - CLYH CLYH
 - CLYI CLYI
 - CLYJ CLYJ
 - CLYK CLYK
 - CLYL CLYL
 - CLYM CLYM
 - CLYN CLYN
 - CLYO CLYO
 - CLYP CLYP
 - CLYQ CLYQ
 - CLYR CLYR
 - CLYS CLYS
 - CLYT CLYT
 - CLYU CLYU
 - CLYV CLYV
 - CLYW CLYW
 - CLYX CLYX
 - CLYY CLYY
 - CLYZ CLYZ
 - CLZA CLZA
 - CLZB CLZB
 - CLZC CLZC
 - CLZD CLZD
 - CLZE CLZE
 - CLZF CLZF
 - CLZG CLZG
 - CLZH CLZH
 - CLZI CLZI
 - CLZJ CLZJ
 - CLZK CLZK
 - CLZL CLZL
 - CLZM CLZM
 - CLZN CLZN
 - CLZO CLZO
 - CLZP CLZP
 - CLZQ CLZQ
 - CLZR CLZR
 - CLZS CLZS
 - CLZT CLZT
 - CLZU CLZU
 - CLZV CLZV
 - CLZW CLZW
 - CLZX CLZX
 - CLZY CLZY
 - CLZZ CLZZ

SQUARE FOOTAGE	DESCRIPTION
837	FIRST FLOOR
1224	SECOND FLOOR
2061	TOTAL HEATED
423	GARAGE
132	FRONT PORCH
2619	TOTAL BUILDS
144	PATIO

NOTE:
 SET WINDOW HEADERS @ 7'-11 1/2" AFF. UNO

NOTES:
 1) 3/4" WALL PLATE HEIGHT, UNO
 2) SET WINDOWS @ 7'-11 1/2" AFF. UNO
 3) INTERIOR WALLS ARE @ 4" WIDE, UNO
 4) EXTERIOR WALLS ARE @ 4" WIDE, UNO
 5) DIMENSIONS ARE TO FRAMING
 6) WHERE WINDOW SILLS ARE 6" OR GREATER ABOVE FINISHED GRADE, WINDOW SILL MUST BE MIN. 24" AFF.

FIRST FLOOR PLAN
 10'-10"

Grand Oak HOMES
 14 Grand Oak Homes.com
 10000 YOUNGSALE RD
 YOUNGSALE, NC 27590

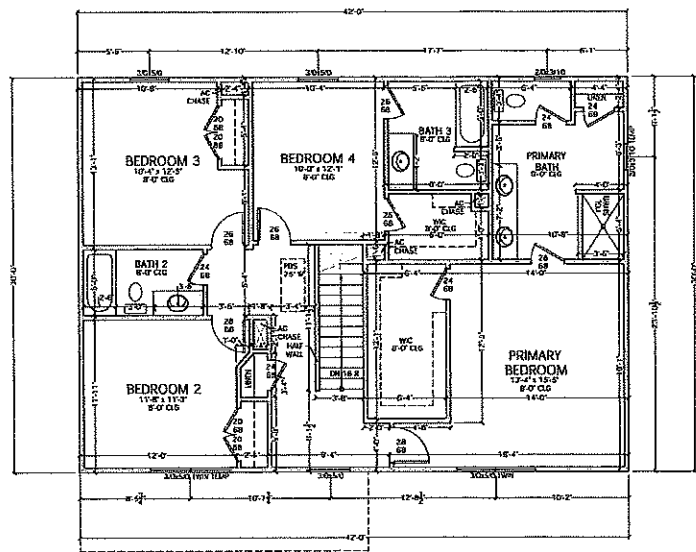
The SHEELY ELEVATION B

INVENTORY
 COUNTRYSIDE FARMS, HOMESITE 03

DATE	REV	BY
12-10-24	A	JP
12-18-24	A	JP
01-03-25	C	JP

SHEET **3**

The Plan and Design are the property of Grand Oak Homes, LLC. All rights reserved. This Plan and Design are not to be used for any other project without the written consent of Grand Oak Homes, LLC. These plans are not to be copied or reproduced in any form without the written consent of Grand Oak Homes, LLC. No responsibility is assumed for any errors or omissions in these plans. All dimensions and quantities are shown unless otherwise noted. Grand Oak Homes, LLC reserves the right to make changes to these plans without notice.



NOTE:
SET WINDOW HEADERS
@ 6'-11 1/2" AFF. UNO

- NOTES:
- 1) 8'-0" WALL PLATE HEIGHT, UNO
 - 2) SET WINDOWS @ 6'-11 1/2" AFF. UNO
 - 3) INTERIOR WALLS ARE @ 4" WIDE, UNO
 - 4) EXTERIOR WALLS ARE @ 4" WIDE, UNO
 - 5) DIMENSIONS ARE TO FRAMING
 - 6) WHERE WINDOW SILLS ARE 6'-0" OR GREATER ABOVE FINISHED GRADE, WINDOW SILL MUST BE MIN. 24" AFF.

SECOND FLOOR PLAN

14-17-12

Grand Oak
LICENSES
MGrandOak.com
1000
PO BOX 1197
YOUNGSVILLE, NC 27596

The SHERBLY
ELEVATION B

INVENTORY
COUNTRYSIDE FARMS, HOMESITE 03

PLAN NUMBER
2-2001-2516-4-3-2-CF

DATE - 2014	D	B
12-10-14-A	D	B
12-19-14-B	D	B
01-03-15-C	D	B

SHEET
4

GOPICHU SOAZ
ARCHITECT/ENGINEER

This Plan and Design is the property of GoPichu Soaz, Inc. It is to be used only for the project and site for which it was prepared and shall not be used for any other project without the written consent of GoPichu Soaz, Inc. The user assumes all liability for any errors or omissions in this plan and design. GoPichu Soaz, Inc. is not responsible for any errors or omissions in this plan and design. The user shall be responsible for obtaining all necessary permits and approvals from the appropriate authorities. The user shall be responsible for providing all necessary information and data to the architect/engineer. The user shall be responsible for providing all necessary information and data to the architect/engineer. The user shall be responsible for providing all necessary information and data to the architect/engineer.