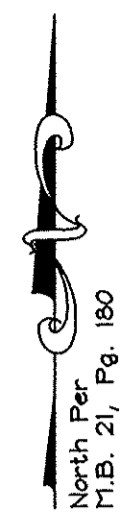


Right-of-way Curve Data

Table with 6 columns: Curve, Radius, Length, Tangent, Chord, Bearing, Delta. Contains 26 rows of curve data.



20' Buffer is reserved for the planting of trees or shrubs by the property owner. The building of structures hereon is prohibited.

10' Pedestrian Easement Sign & Landscaping Easement - See Inset

18' Pedestrian Easement

15' Utility Easement

15' Utility Easement

15' Utility Easement

15' Utility Easement

15' Utility Easement

15' Utility Easement

15' Utility Easement

15' Utility Easement

15' Utility Easement

15' Utility Easement

15' Utility Easement

15' Utility Easement

15' Utility Easement

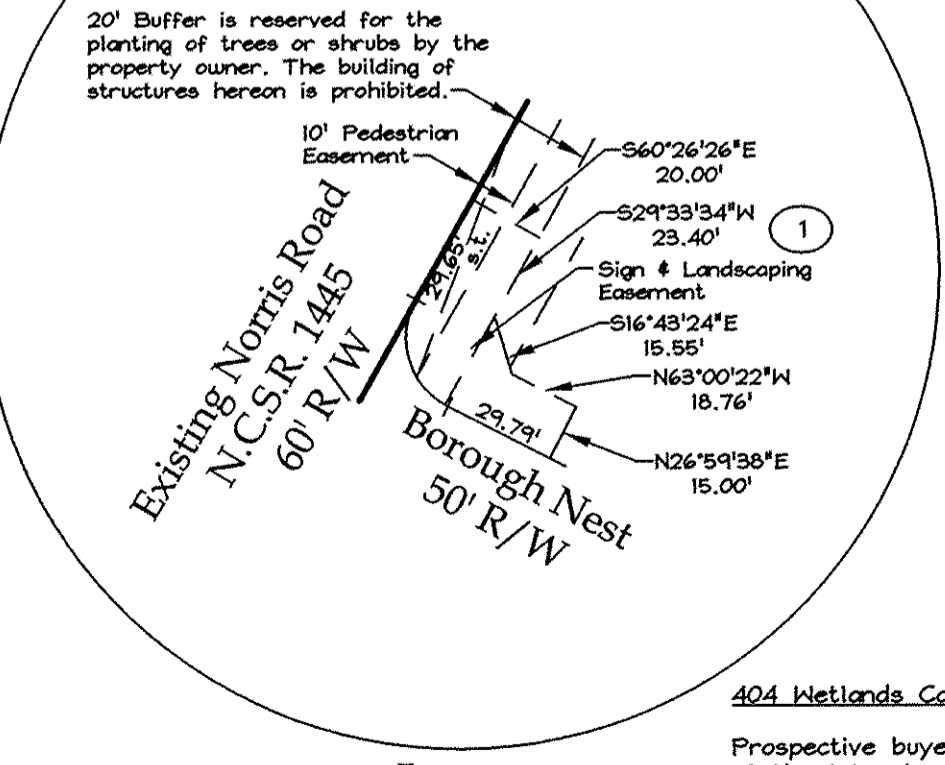
15' Utility Easement

15' Utility Easement

15' Utility Easement

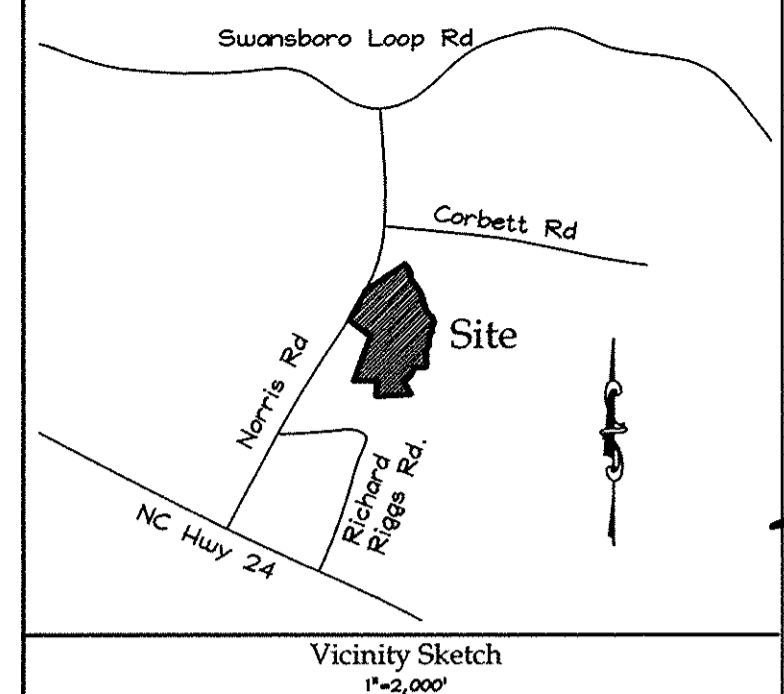
Chord Data

Table with 4 columns: Lot, Curve, Bearing, Distance. Contains 44 rows of chord data.



Inset Scale: 1"=50'

404 Wetlands Caution Prospective buyers are cautioned that portions of the lots shown on this plat are restricted in use by the Jurisdiction of the United States Army Corps of Engineers 404 Wetlands Regulations. Individual lot reviews are encouraged. Verification of location and restrictions should be made prior to individual lot development.



- LEGEND
IPF - Iron Pipe Found
ISF - Iron Stake Found
CP - Control Point
PKF - PK Nail Found
RISS - Reference Iron Stake Set
[] - Distance to Reference Iron Stake
R/W - Right-of-way
MBL - Minimum Building Line
s.t. - 10' x 70' Sight Triangle
sf - Square Footage
PC - Point of Curvature
PT - Point of Tangency
Curve Number
Lot Number
Street Address
Wetlands Line
Centerline

81 Lots
30.51 Acres
Deed Ref: D.B. 2990, Pg. 45
M.B. 21, Pg. 180
R-10 Zone

See Sheet 1 of 3 For Certs & Notes, And Sheet 3 of 3 for Additional Lots, & Notes.

FINAL PLAT SHEET 2 OF 3

SWANNSBOROUGH ACRES SECTION I

Swansboro Twp., Onslow Co., North Carolina

Owner:

Swansborough Acres, LLC

3257 HENDERSON DRIVE JACKSONVILLE, NORTH CAROLINA 28546 (910) 347-1108

DATE: 03/12/09

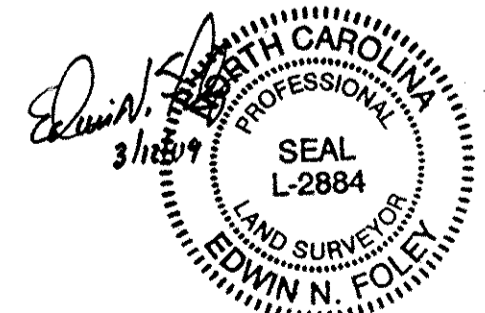
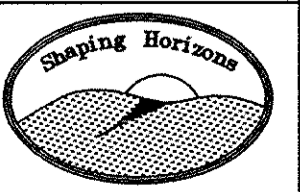
GRAPHIC SCALE: 1"=100'

SCALE: 1"=100'



Parker & Associates, Inc. Consulting Engineers - Land Surveyors - Land Planners

P.O. Box 976 - 28541-0976 306 New Bridge Street - 28540 Jacksonville, North Carolina Phone (910) 455-2414 - Fax (910) 455-3441



FIELD BOOK: SWANNSBORO ACRES, PG. 1-13 DSK NAME: ACAD 2094 FILENAME: abel-PP.dwg JOB NO.: S060113-4092