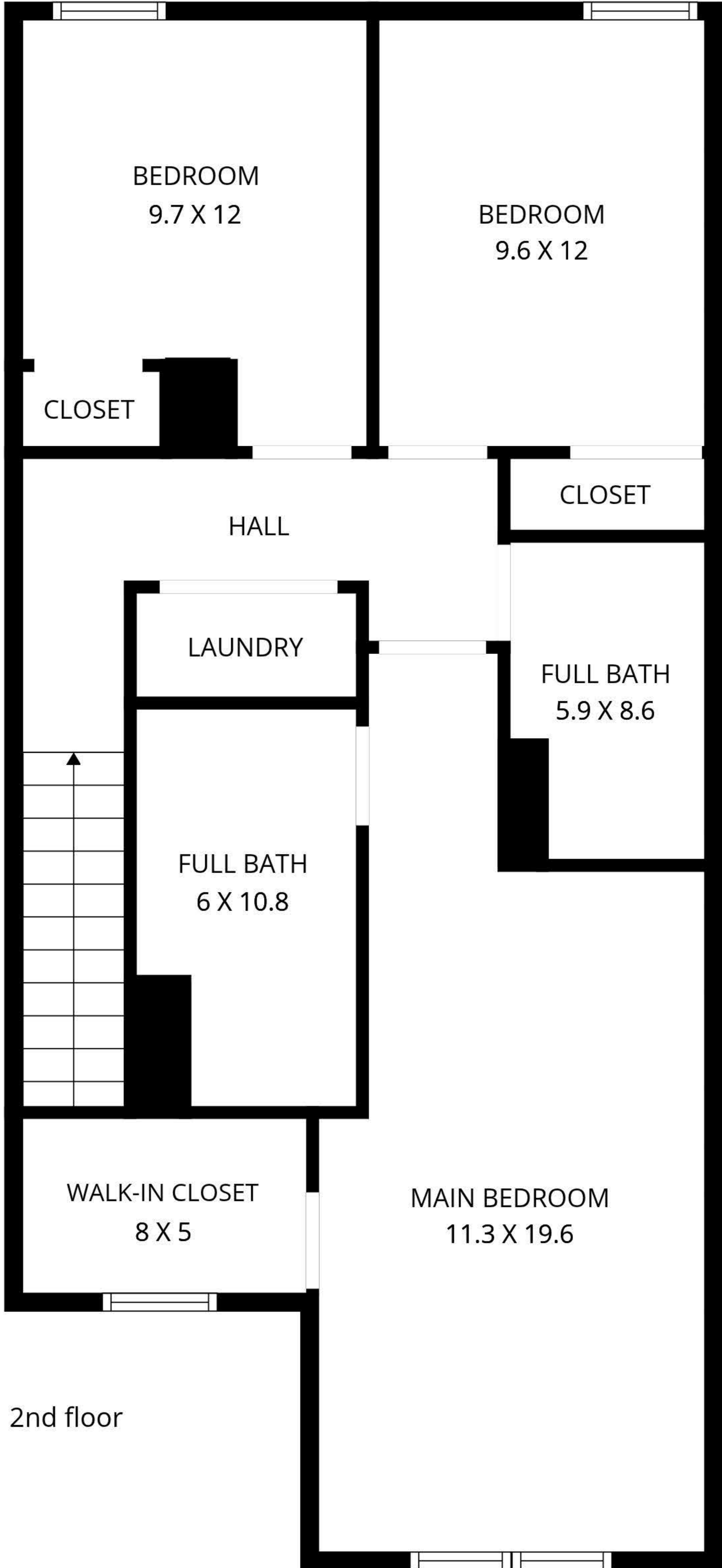
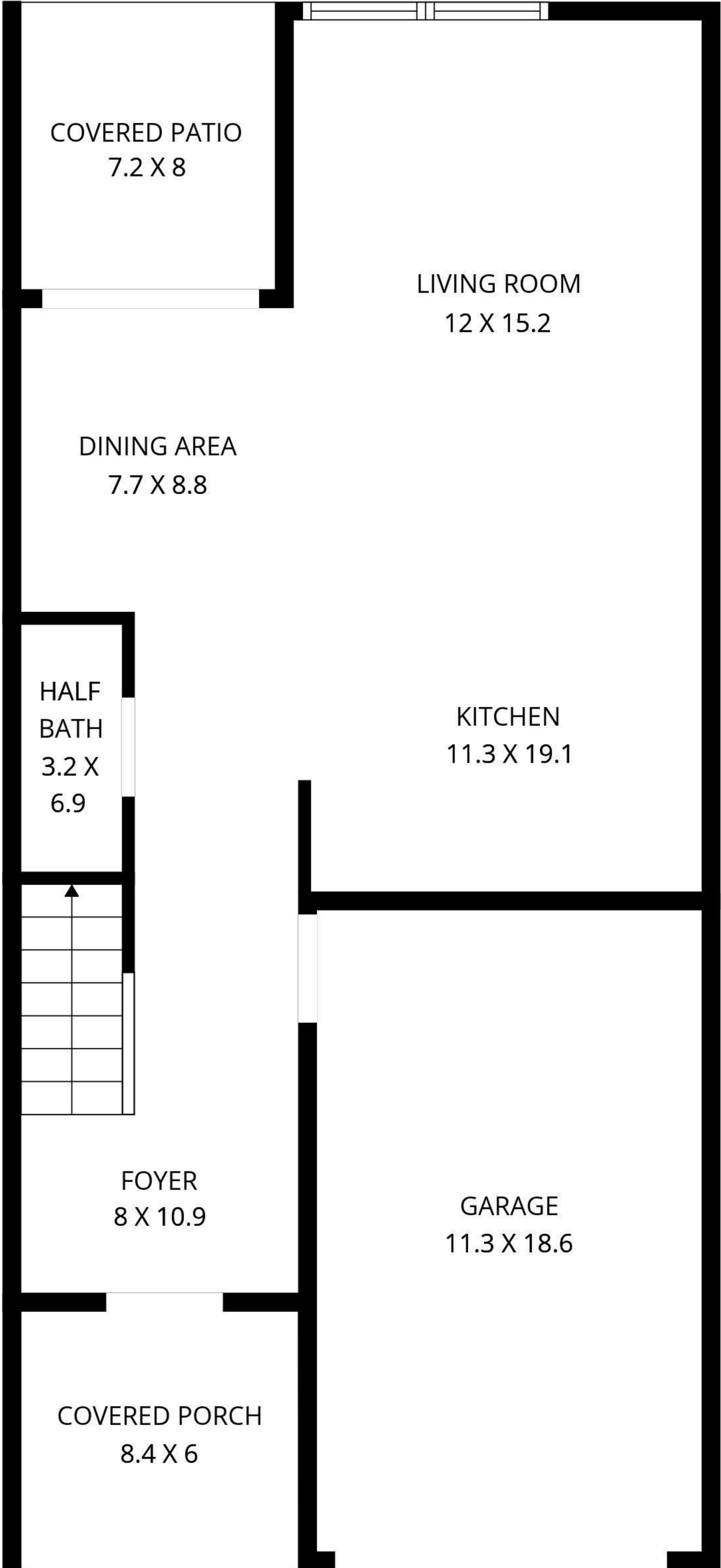


212 North Stingray Lane
Sneads Ferry, NC 28460



1st floor

Total Heated: 1419 sq ft.
Floor 1: 564 sq ft. Floor 2: 856 sq ft.
Excluded Areas: Garage: 230 sq ft. Cov Porch: 50 sq ft. Cov Patio: 58 sq ft.

MEASUREMENTS DEEMED HIGHLY RELIABLE BUT NOT GUARANTEED