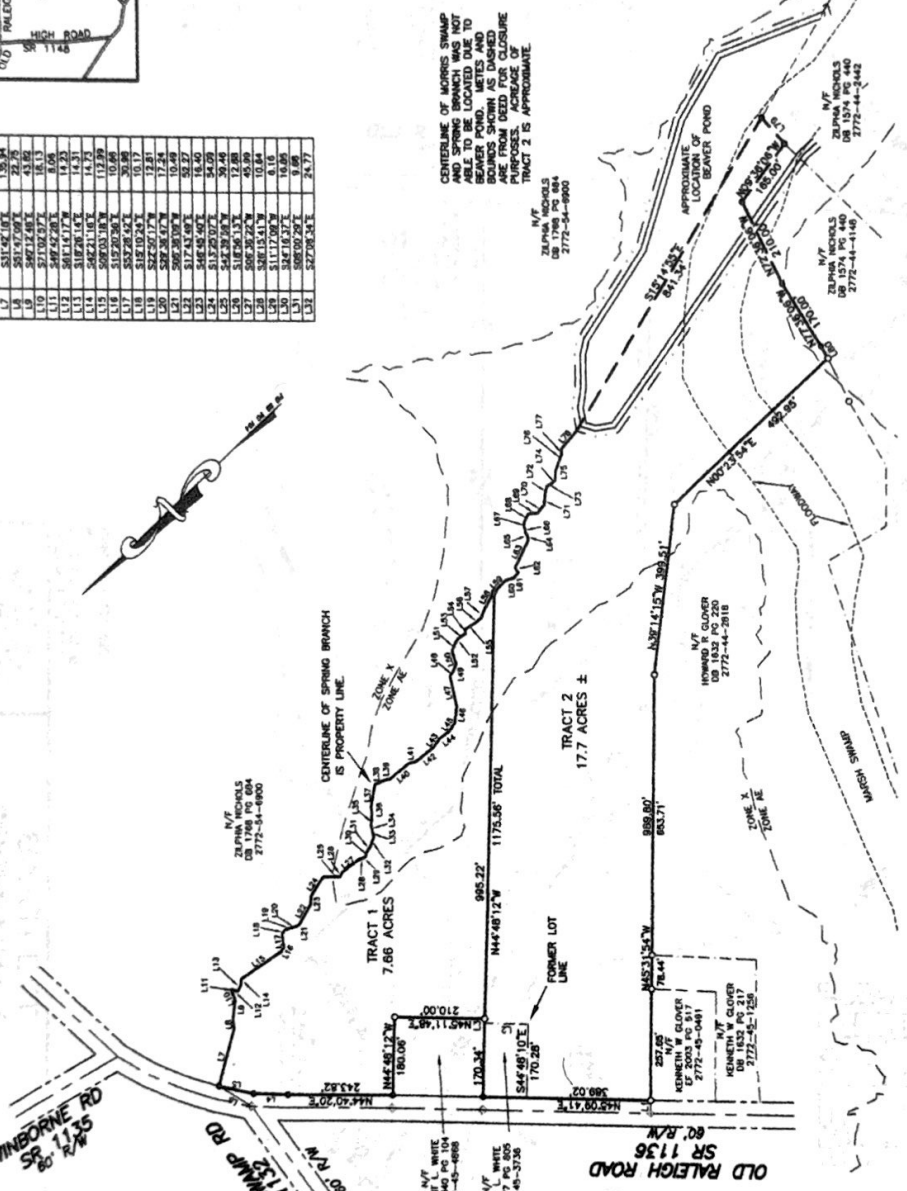


LINE	BEARING	LENGTH
L1	N 89° 54' 12" E	12.00
L2	S 89° 54' 12" E	14.53
L3	S 44° 46' 12" W	100.00
L4	S 44° 46' 12" W	10.00
L5	N 44° 46' 12" E	10.00
L6	N 44° 46' 12" E	10.00
L7	S 44° 46' 12" W	10.00
L8	S 44° 46' 12" W	10.00
L9	N 44° 46' 12" E	10.00
L10	N 44° 46' 12" E	10.00
L11	S 44° 46' 12" W	10.00
L12	S 44° 46' 12" W	10.00
L13	N 44° 46' 12" E	10.00
L14	N 44° 46' 12" E	10.00
L15	S 44° 46' 12" W	10.00
L16	S 44° 46' 12" W	10.00
L17	N 44° 46' 12" E	10.00
L18	N 44° 46' 12" E	10.00
L19	S 44° 46' 12" W	10.00
L20	S 44° 46' 12" W	10.00
L21	N 44° 46' 12" E	10.00
L22	N 44° 46' 12" E	10.00
L23	S 44° 46' 12" W	10.00
L24	S 44° 46' 12" W	10.00
L25	N 44° 46' 12" E	10.00
L26	N 44° 46' 12" E	10.00
L27	S 44° 46' 12" W	10.00
L28	S 44° 46' 12" W	10.00
L29	N 44° 46' 12" E	10.00
L30	N 44° 46' 12" E	10.00
L31	S 44° 46' 12" W	10.00
L32	S 44° 46' 12" W	10.00
L33	N 44° 46' 12" E	10.00
L34	N 44° 46' 12" E	10.00
L35	S 44° 46' 12" W	10.00
L36	S 44° 46' 12" W	10.00
L37	N 44° 46' 12" E	10.00
L38	N 44° 46' 12" E	10.00
L39	S 44° 46' 12" W	10.00
L40	S 44° 46' 12" W	10.00
L41	N 44° 46' 12" E	10.00
L42	N 44° 46' 12" E	10.00
L43	S 44° 46' 12" W	10.00
L44	S 44° 46' 12" W	10.00
L45	N 44° 46' 12" E	10.00
L46	N 44° 46' 12" E	10.00
L47	S 44° 46' 12" W	10.00
L48	S 44° 46' 12" W	10.00
L49	N 44° 46' 12" E	10.00
L50	N 44° 46' 12" E	10.00
L51	S 44° 46' 12" W	10.00
L52	S 44° 46' 12" W	10.00
L53	N 44° 46' 12" E	10.00
L54	N 44° 46' 12" E	10.00
L55	S 44° 46' 12" W	10.00
L56	S 44° 46' 12" W	10.00
L57	N 44° 46' 12" E	10.00
L58	N 44° 46' 12" E	10.00
L59	S 44° 46' 12" W	10.00
L60	S 44° 46' 12" W	10.00
L61	N 44° 46' 12" E	10.00
L62	N 44° 46' 12" E	10.00
L63	S 44° 46' 12" W	10.00
L64	S 44° 46' 12" W	10.00
L65	N 44° 46' 12" E	10.00
L66	N 44° 46' 12" E	10.00
L67	S 44° 46' 12" W	10.00
L68	S 44° 46' 12" W	10.00
L69	N 44° 46' 12" E	10.00
L70	N 44° 46' 12" E	10.00
L71	S 44° 46' 12" W	10.00
L72	S 44° 46' 12" W	10.00
L73	N 44° 46' 12" E	10.00
L74	N 44° 46' 12" E	10.00
L75	S 44° 46' 12" W	10.00
L76	S 44° 46' 12" W	10.00
L77	N 44° 46' 12" E	10.00
L78	N 44° 46' 12" E	10.00
L79	S 44° 46' 12" W	10.00
L80	S 44° 46' 12" W	10.00
L81	N 44° 46' 12" E	10.00
L82	N 44° 46' 12" E	10.00
L83	S 44° 46' 12" W	10.00
L84	S 44° 46' 12" W	10.00
L85	N 44° 46' 12" E	10.00
L86	N 44° 46' 12" E	10.00
L87	S 44° 46' 12" W	10.00
L88	S 44° 46' 12" W	10.00
L89	N 44° 46' 12" E	10.00
L90	N 44° 46' 12" E	10.00
L91	S 44° 46' 12" W	10.00
L92	S 44° 46' 12" W	10.00
L93	N 44° 46' 12" E	10.00
L94	N 44° 46' 12" E	10.00
L95	S 44° 46' 12" W	10.00
L96	S 44° 46' 12" W	10.00
L97	N 44° 46' 12" E	10.00
L98	N 44° 46' 12" E	10.00
L99	S 44° 46' 12" W	10.00
L100	S 44° 46' 12" W	10.00

LOCATION MAP NO SCALE

LINE	BEARING	LENGTH
L1	N 89° 54' 12" E	12.00
L2	S 89° 54' 12" E	14.53
L3	S 44° 46' 12" W	100.00
L4	S 44° 46' 12" W	10.00
L5	N 44° 46' 12" E	10.00
L6	N 44° 46' 12" E	10.00
L7	S 44° 46' 12" W	10.00
L8	S 44° 46' 12" W	10.00
L9	N 44° 46' 12" E	10.00
L10	N 44° 46' 12" E	10.00
L11	S 44° 46' 12" W	10.00
L12	S 44° 46' 12" W	10.00
L13	N 44° 46' 12" E	10.00
L14	N 44° 46' 12" E	10.00
L15	S 44° 46' 12" W	10.00
L16	S 44° 46' 12" W	10.00
L17	N 44° 46' 12" E	10.00
L18	N 44° 46' 12" E	10.00
L19	S 44° 46' 12" W	10.00
L20	S 44° 46' 12" W	10.00
L21	N 44° 46' 12" E	10.00
L22	N 44° 46' 12" E	10.00
L23	S 44° 46' 12" W	10.00
L24	S 44° 46' 12" W	10.00
L25	N 44° 46' 12" E	10.00
L26	N 44° 46' 12" E	10.00
L27	S 44° 46' 12" W	10.00
L28	S 44° 46' 12" W	10.00
L29	N 44° 46' 12" E	10.00
L30	N 44° 46' 12" E	10.00
L31	S 44° 46' 12" W	10.00
L32	S 44° 46' 12" W	10.00
L33	N 44° 46' 12" E	10.00
L34	N 44° 46' 12" E	10.00
L35	S 44° 46' 12" W	10.00
L36	S 44° 46' 12" W	10.00
L37	N 44° 46' 12" E	10.00
L38	N 44° 46' 12" E	10.00
L39	S 44° 46' 12" W	10.00
L40	S 44° 46' 12" W	10.00
L41	N 44° 46' 12" E	10.00
L42	N 44° 46' 12" E	10.00
L43	S 44° 46' 12" W	10.00
L44	S 44° 46' 12" W	10.00
L45	N 44° 46' 12" E	10.00
L46	N 44° 46' 12" E	10.00
L47	S 44° 46' 12" W	10.00
L48	S 44° 46' 12" W	10.00
L49	N 44° 46' 12" E	10.00
L50	N 44° 46' 12" E	10.00
L51	S 44° 46' 12" W	10.00
L52	S 44° 46' 12" W	10.00
L53	N 44° 46' 12" E	10.00
L54	N 44° 46' 12" E	10.00
L55	S 44° 46' 12" W	10.00
L56	S 44° 46' 12" W	10.00
L57	N 44° 46' 12" E	10.00
L58	N 44° 46' 12" E	10.00
L59	S 44° 46' 12" W	10.00
L60	S 44° 46' 12" W	10.00
L61	N 44° 46' 12" E	10.00
L62	N 44° 46' 12" E	10.00
L63	S 44° 46' 12" W	10.00
L64	S 44° 46' 12" W	10.00
L65	N 44° 46' 12" E	10.00
L66	N 44° 46' 12" E	10.00
L67	S 44° 46' 12" W	10.00
L68	S 44° 46' 12" W	10.00
L69	N 44° 46' 12" E	10.00
L70	N 44° 46' 12" E	10.00
L71	S 44° 46' 12" W	10.00
L72	S 44° 46' 12" W	10.00
L73	N 44° 46' 12" E	10.00
L74	N 44° 46' 12" E	10.00
L75	S 44° 46' 12" W	10.00
L76	S 44° 46' 12" W	10.00
L77	N 44° 46' 12" E	10.00
L78	N 44° 46' 12" E	10.00
L79	S 44° 46' 12" W	10.00
L80	S 44° 46' 12" W	10.00
L81	N 44° 46' 12" E	10.00
L82	N 44° 46' 12" E	10.00
L83	S 44° 46' 12" W	10.00
L84	S 44° 46' 12" W	10.00
L85	N 44° 46' 12" E	10.00
L86	N 44° 46' 12" E	10.00
L87	S 44° 46' 12" W	10.00
L88	S 44° 46' 12" W	10.00
L89	N 44° 46' 12" E	10.00
L90	N 44° 46' 12" E	10.00
L91	S 44° 46' 12" W	10.00
L92	S 44° 46' 12" W	10.00
L93	N 44° 46' 12" E	10.00
L94	N 44° 46' 12" E	10.00
L95	S 44° 46' 12" W	10.00
L96	S 44° 46' 12" W	10.00
L97	N 44° 46' 12" E	10.00
L98	N 44° 46' 12" E	10.00
L99	S 44° 46' 12" W	10.00
L100	S 44° 46' 12" W	10.00



**NOTES:**

- AREAS COMPUTED BY COORDINATE CALCULATIONS
- ALL DISTANCES SHOWN ARE HORIZONTAL
- ALL RIGHT-OF-WAYS ARE PUBLIC UNLESS NOTED OTHERWISE
- IRONS ARE TO BE SET AT ALL CORNERS
- NO WETLANDS HAVE BEEN DELINEATED
- PROPERTY IS LOCATED IN A FLOOD HAZARD AREA
- PLAT NO. 2007-0200-J WILSON COUNTY NORTH CAROLINA
- THIS PROPERTY IS LOCATED IN THE HEALTH DEPARTMENT WATERSHED AREA
- THIS PLAT IS SUBJECT TO ALL EASEMENTS, AGREEMENTS AND ENCUMBRANCES OF RECORD TO THE DATE OF THIS PLAT
- THERE ARE NO CONDEMNATIONS VISIBLE
- REFERENCES: DEED BOOK 233 PAGE 373  
PLAT BOOK 26 PG 184  
DEED BOOK 1777 PAGE 805

**SITE DATA:**  
TOTAL AREA IN TRACT 25.4 AC. ±  
ZONING AR  
TOTAL # LOTS 2

**BUILDING SETBACKS:**  
FRONT 40'  
SIDE 12'  
REAR 30'

**LEGEND:**  
○ NEW IRON PIPE  
● EXISTING IRON PIPE  
≡ EXISTING RAILROAD SPIRE

I hereby certify that I (we) are the owner(s) of the property shown and described herein and that I (we) have consented to the plat of subdivision with my (our) true consent, and that the plat of subdivision is in accordance with the provisions of the North Carolina Subdivision Control Act, Chapter 406, N.C. General Statutes, and that I (we) are not a party to any pending litigation involving the property shown and described herein.

*William A. Bartlett*  
Date: 1/23/07

I hereby certify that the subdivision plat shown herein has been filed in accordance with the Subdivision Regulations of the State of North Carolina, and that I (we) are not a party to any pending litigation involving the property shown and described herein.

*William A. Bartlett*  
Date: 1/23/07

William A. Bartlett, certify that this survey creates a subdivision of land within an area of a county or municipality that has an ordinance that regulates parcels of land.

*William A. Bartlett*  
Date: 1/23/07

North Carolina  
County of Wilson  
I, *William A. Bartlett*, Register of Deeds, certify that the map or plat to which these remarks pertain is a true and correct copy of the original map or plat as recorded in the Register of Deeds.

*William A. Bartlett*  
Date: 1/23/07

North Carolina  
Wilson County  
Filed for Registration  
at 4:05 clock p.m. on 1/23 day of  
January 2007 and recorded  
in Book 35 Page 279

*William A. Bartlett*  
Register of Deeds  
by *Karen S. White, J.D.*  
MINOR PLAT

PROPERTY OF  
**WILLIAM KERMIT WHITE**

OLD FIELDS TOWNSHIP  
NORTH CAROLINA

WILSON COUNTY  
ZONE: AR

**BARTLETT ENGINEERING & SURVEYING, PC**  
1008 WASH STREET NORTH  
WILSON, N.C. 27875-1726  
TEL: (252) 338-0704  
FAX: (252) 338-0804  
EMAIL: info@bartlett.com

PROJECT: 06-345  
DATE: JAN. 2007  
SCALE: 1" = 200'  
SURVEY BY: MP, JB  
DRAWN BY: BMB  
REVISIONS



OWNER/DEVELOPER:  
**BILLY WHITE**  
172 NC HWY 42 W  
WILSON, NC 27875

