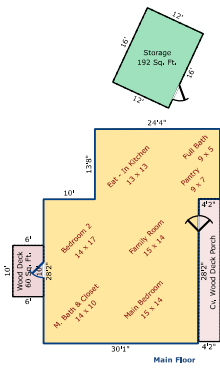
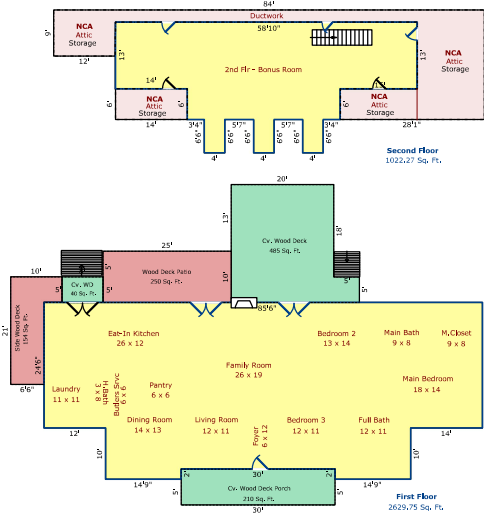


232 Mitchell Farm Road, Goldsboro NC 27530 (+ Structure Page's)



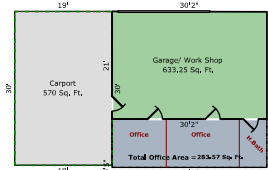
234 Mitchell Farm Road

Long Cabin Approx. Livable Area = 1181.35 Sq. Ft.



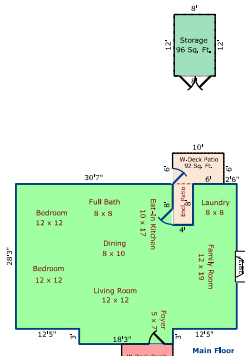
232 Mitchell Farm Road

Main House Approx. Livable Area = 3652.02 Sq. Ft.



230 Mitchell Farm Road

Office/Workshop: NCA Sq.Ft. Listed per Area

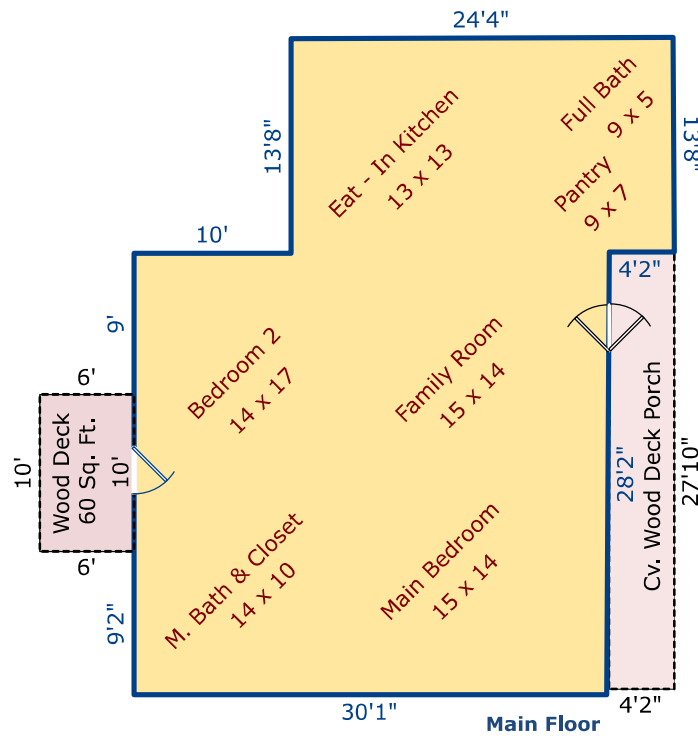
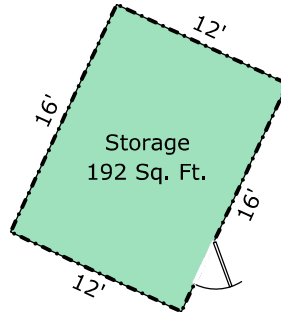


228 Mitchell Farm Road

Guest House Approx. Livable Area = 1235.38 Sq. Ft.

Property Structure Layout Main Page

**Dimensions are rounded. Diagram is not to exact scale.
 **Approximate Assessed Sq.Ft. can vary between other sources, this assessment recording does not determine any appraised values.

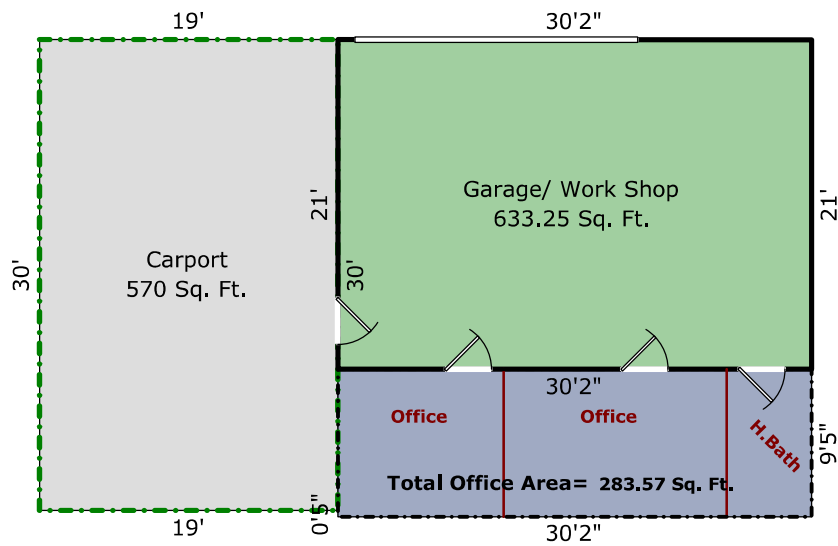


234 Mitchell Farm Road

Log Cabin Apprx Livable Area = 1181.35 Sq. Ft.

**Dimensions are rounded/Diagram is not to exact scale.

**Approximate Assessed Sq.Ft. can vary between other sources; this assessment rendering does not determine any appraised values.

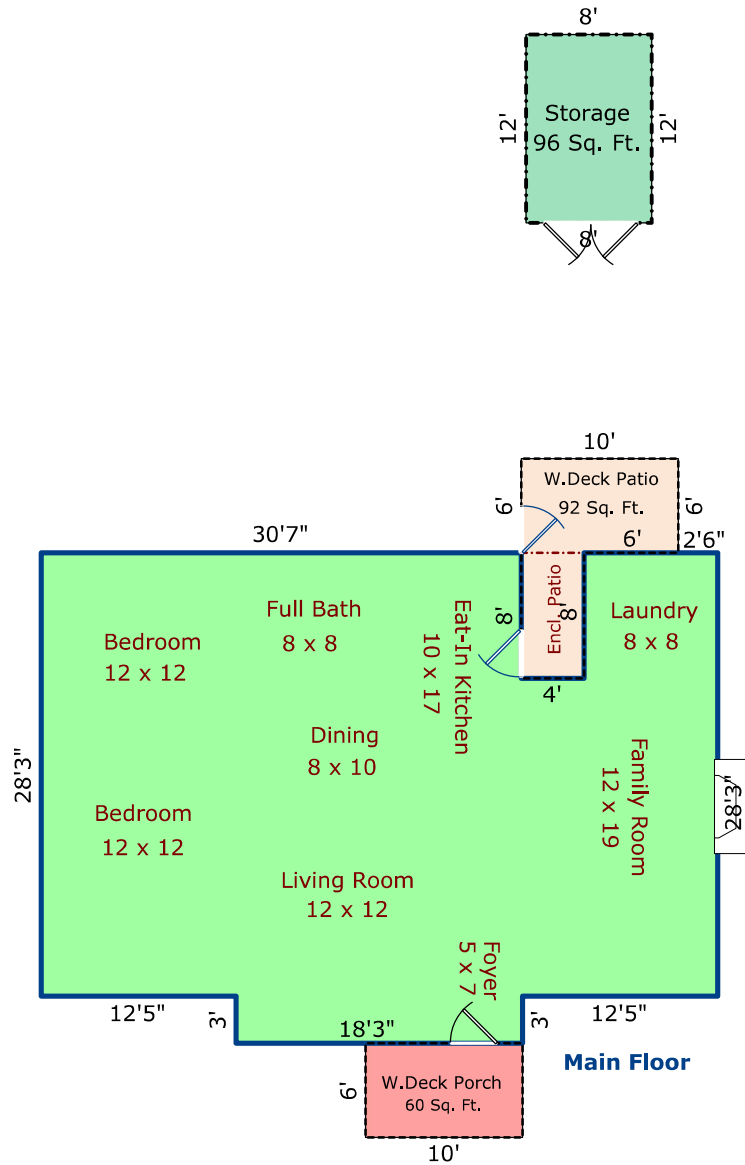


230 Mitchell Farm Road

Office-Workshop = NCA Sq.Ft. Listed per Area

**Dimensions are rounded/Diagram is not to exact scale.

**Approximate Assessed Sq.Ft. can vary between other sources; this assessment rendering does not determine any appraised values.



228 Mitchell Farm Road

***Guest House Apprx. Livable Area = 1239.38 Sq. Ft.**

**Dimensions are rounded/Diagram is not to exact scale.

**Approximate Assessed Sq.Ft. can vary between other sources; this assessment rendering does not determine any appraised values.