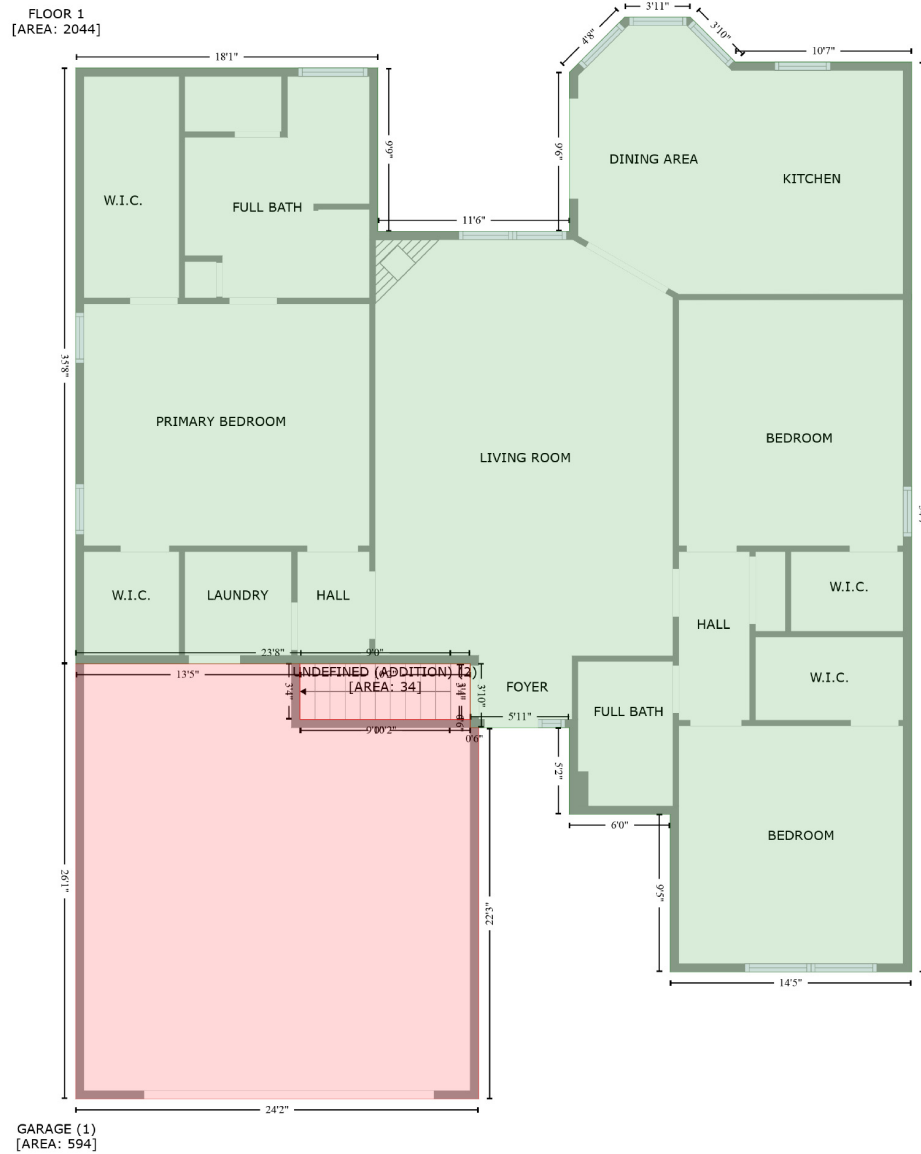


910 Uplands Lane, Jacksonville, North Carolina 28546, United States

Gross Living Area: 2386 sq. ft

Level 1



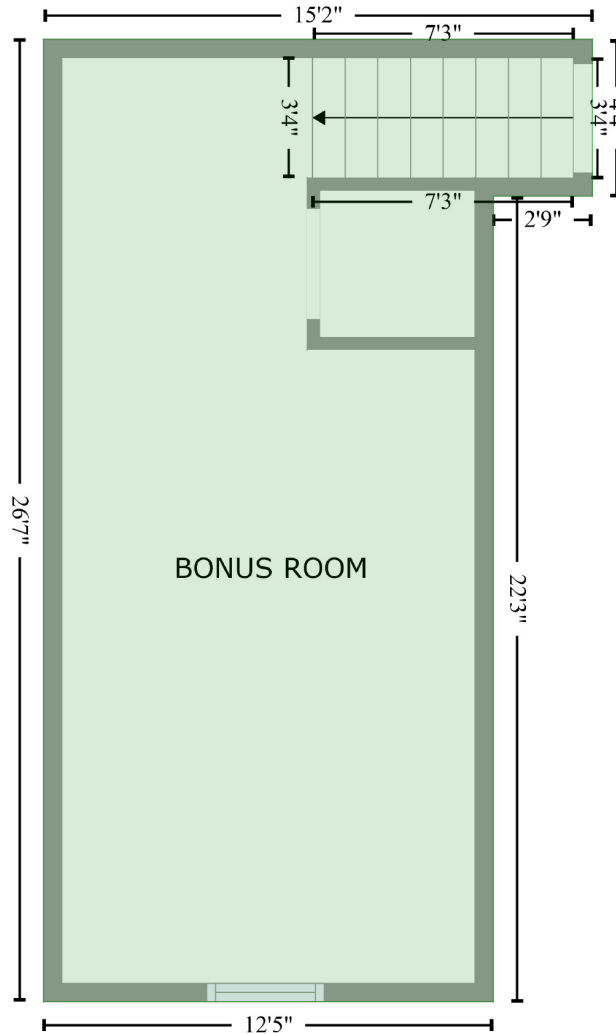
Space	Area (sq. ft)	Calculation
FLOOR 1 (Living area)	2044	Coordinate Polygon Area Algorithm using inches $-((520.2 + 552.4) * (-66.8 - -34.5) + (552.4 + 679.2) * (-34.5 - -34.5) + (679.2 + 679.2) * (-34.5 - 620) + (679.2 + 505.8) * (620 - 620) + (505.8 + 505.8) * (620 - 506.6) + (505.8 + 433.3) * (506.6 - 506.6) + (433.3 + 433.3) * (506.6 - 444.3) + (433.3 + 362.2) * (444.3 - 444.3) + (362.2 + 362.2) * (444.3 - 398.2) + (362.2 + 78.6) * (398.2 - 398.2) + (78.6 + 78.6) * (398.2 - -30.2) + (78.6 + 295.7) * (-30.2 - -30.2) + (295.7 + 295.7) * (-30.2 - 87.2) + (295.7 + 433.4) * (87.2 - 87.2) + (433.4 + 433.4) * (87.2 - -27.2) + (433.4 + 473.1) * (-27.2 - -66.8) + (473.1 + 520.2) * (-66.8 - -66.8)) * 0.5 * 0.00694$

910 Uplands Lane, Jacksonville, North Carolina 28546, United States

Gross Living Area: 2386 sq. ft

Level 2

FLOOR 2
[AREA: 342]



Space	Area (sq. ft)	Calculation <small>Coordinate Polygon Area Algorithm using inches</small>
FLOOR 2 (Living area)	342	$-\left((332.5 + 332.5) * (392.2 - 444.3) + (332.5 + 299.7) * (444.3 - 444.3) + (299.7 + 299.7) * (444.3 - 711.3) + (299.7 + 150.6) * (711.3 - 711.3) + (150.6 + 150.6) * (711.3 - 392.2) + (150.6 + 332.5) * (392.2 - 392.2)\right) * 0.5 * 0.00694$