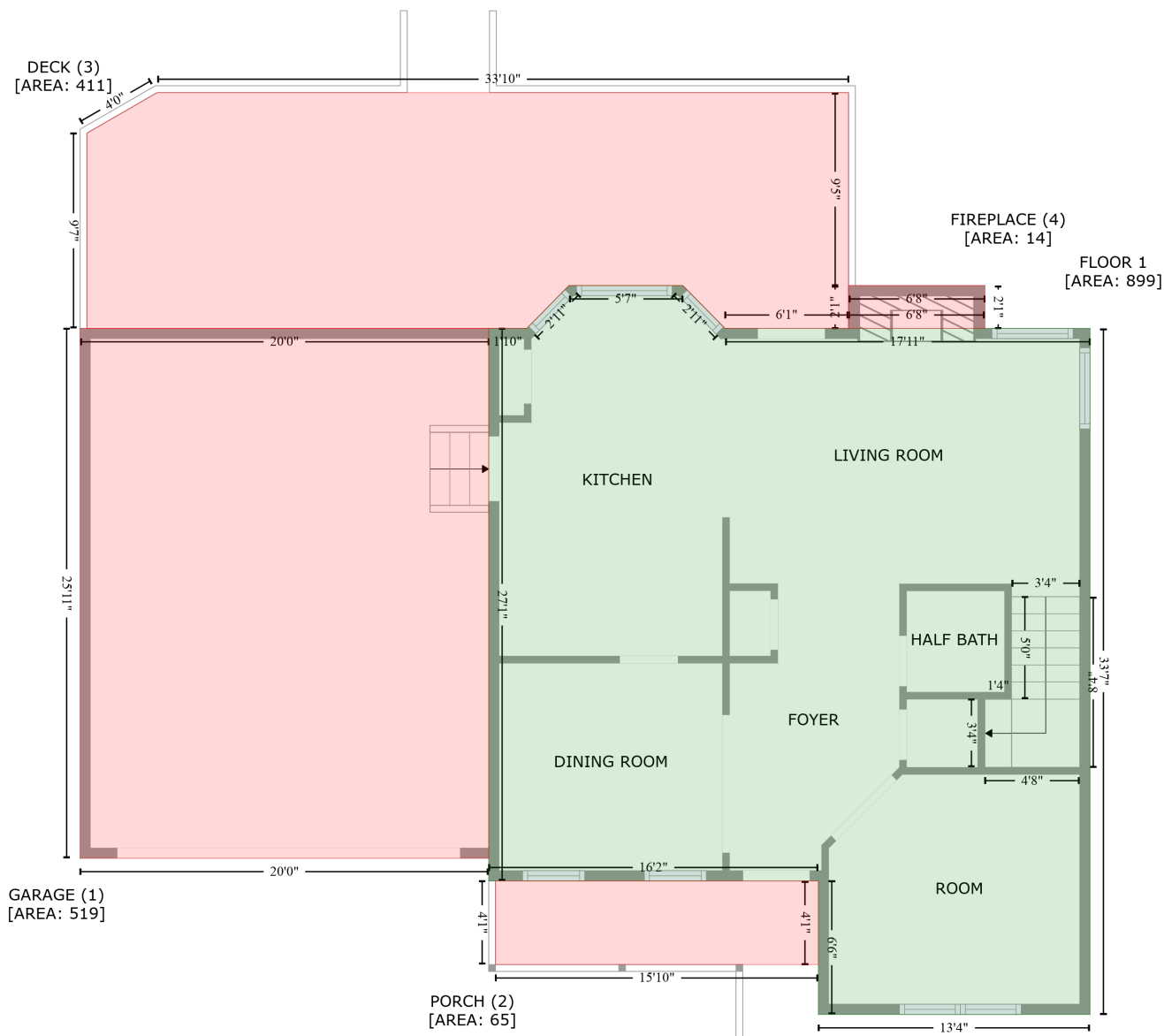


# 104 Burning Tree Lane, Jacksonville, Onslow County, North Carolina, United States, 28546

Gross Living Area: 2171 sq. ft

## Level 1



Space	Area (sq. ft)	Calculation <small>Coordinate Polygon Area Algorithm using inches</small>
FLOOR 1 (Living area)	899	$-((350.1 + 375) * (248.3 - 273.5) + (375 + 589.5) * (273.5 - 273.5) + (589.5 + 589.5) * (273.5 - 676.5) + (589.5 + 429.8) * (676.5 - 676.5) + (429.8 + 429.8) * (676.5 - 598) + (429.8 + 236.1) * (598 - 598) + (236.1 + 236.1) * (598 - 273.5) + (236.1 + 258.5) * (273.5 - 273.5) + (258.5 + 283.3) * (273.5 - 248.3) + (283.3 + 350.1) * (248.3 - 248.3)) * 0.5 + 0.00694$
GARAGE (Non-living area)	519	$-((236.1 + 236.1) * (273.5 - 584.7) + (236.1 + -4) * (584.7 - 584.7) + (-4 + -4) * (584.7 - 273.5) + (-4 + 236.1) * (273.5 - 273.5)) * 0.5 + 0.00694$
PORCH (Non-living area)	65	$-((429.8 + 429.8) * (598 - 647.2) + (429.8 + 240.1) * (647.2 - 647.2) + (240.1 + 240.1) * (647.2 - 598) + (240.1 + 429.8) * (598 - 598)) * 0.5 + 0.00694$

# 104 Burning Tree Lane, Jacksonville, Onslow County, North Carolina, United States, 28546

Gross Living Area: 2171 sq. ft

## Level 1

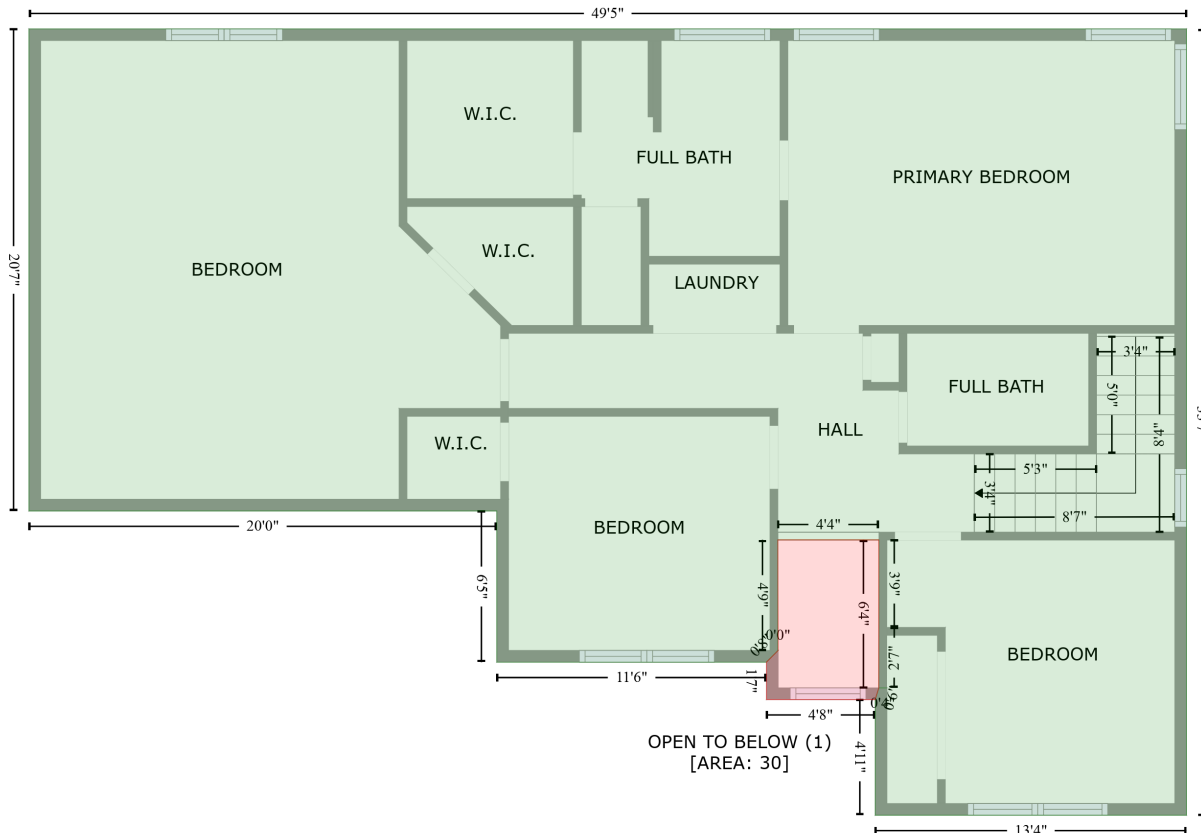
Space	Area (sq. ft)	Calculation <small>Coordinate Polygon Area Algorithm using inches</small>
DECK (Non-living area)	411	$-\left((447.6 + 447.6) * (135 - 248.4) + (447.6 + 447.5) * (248.4 - 273.5) + (447.5 + 375) * (273.5 - 273.5) + (375 + 350.1) * (273.5 - 248.3) + (350.1 + 283.3) * (248.3 - 248.3) + (283.3 + 258.5) * (248.3 - 273.5) + (258.5 + 0) * (273.5 - 273.5) + (0 + 0) * (273.5 - 158.8) + (0 + 41.2) * (158.8 - 135) + (41.2 + 447.6) * (135 - 135)\right) * 0.5 * 0.00694$
FIREPLACE (Non-living area)	14	$-\left((527.7 + 527.7) * (248.3 - 273.5) + (527.7 + 447.5) * (273.5 - 273.5) + (447.5 + 447.5) * (273.5 - 248.3) + (447.5 + 527.7) * (248.3 - 248.3)\right) * 0.5 * 0.00694$

# 104 Burning Tree Lane, Jacksonville, Onslow County, North Carolina, United States, 28546

Gross Living Area: 2171 sq. ft

## Level 2

FLOOR 2  
[AREA: 1272]



Space	Area (sq. ft)	Calculation <small>Coordinate Polygon Area Algorithm using inches</small>
FLOOR 2 (Living area)	1272	$-(589.5 + 589.5) * (273.5 - 676.5) + (589.5 + 429.8) * (676.5 - 676.5) + (429.8 + 429.8) * (676.5 - 617.2) + (429.8 + 431.7) * (617.2 - 611.2) + (431.7 + 435.8) * (611.2 - 611.2) + (435.8 + 431.7) * (611.2 - 611.2) + (431.7 + 431.7) * (611.2 - 580.2) + (431.7 + 431.7) * (580.2 - 535.4) + (431.7 + 379.9) * (535.4 - 535.4) + (379.9 + 379.9) * (535.4 - 592) + (379.9 + 380.1) * (592 - 592) + (380.1 + 374.1) * (592 - 598) + (374.1 + 235.8) * (598 - 598) + (235.8 + 235.8) * (598 - 520.6) + (235.8 + -4) * (520.6 - 520.6) + (-4 + -4) * (520.6 - 273.5) + (-4 + 589.5) * (273.5 - 273.5) * 0.5 * 0.00694$
OPEN TO BELOW (Non-living area)	30	$-(431.7 + 431.7) * (535.4 - 611.2) + (431.7 + 429.8) * (611.2 - 617.2) + (429.8 + 374.1) * (617.2 - 617.2) + (374.1 + 374.1) * (617.2 - 598) + (374.1 + 380.1) * (598 - 592) + (380.1 + 379.9) * (592 - 535.4) + (379.9 + 431.7) * (535.4 - 535.4) * 0.5 * 0.00694$