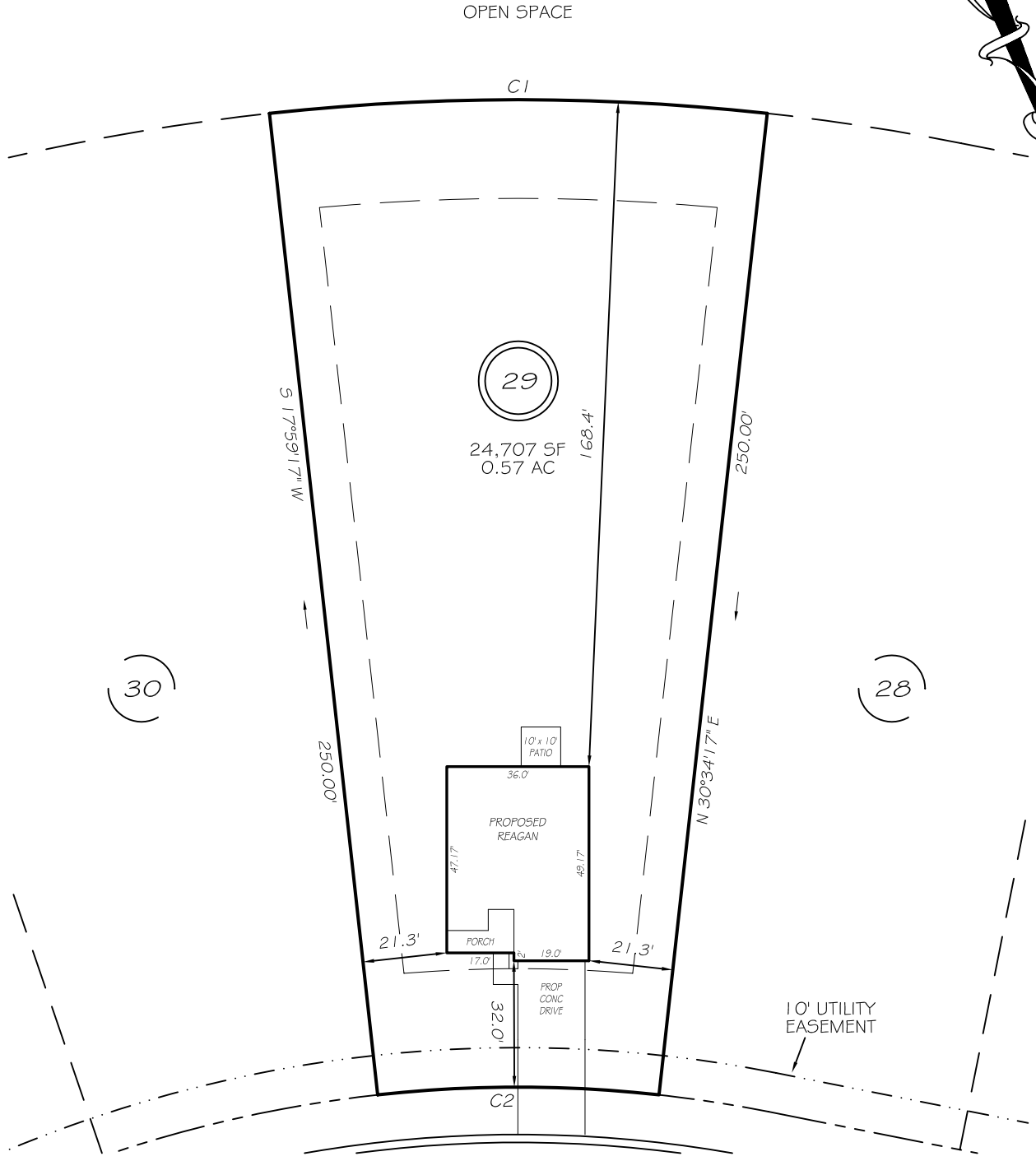


I, MICHAEL P. GRIFFIN, certify that under my direction and supervision this map was drawn from an actual field survey; that the error of closure of the survey as calculated by coordinates is 1: 10,000+; that the area shown hereon was calculated by coordinates. Dashed lines shown hereon were not surveyed.

Witness my hand and seal this day of MONTH 2025.

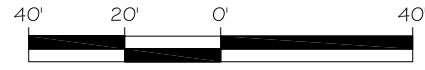
BK 4249 PGS 3-4
HOKE CO. REGISTRY



ASHLEY HEIGHTS DRIVE

IMPERVIOUS AREAS 50' PUBLIC RW

HOUSE	1736 SQ. FT.
DRIVE & WALKS	585 SQ. FT.
PATIO	100 SQ. FT.
TOTAL	2256 SQ. FT.
ALLOWED	4000 SQ. FT.



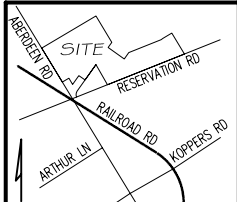
SETBACKS

FRONT	30'
REAR	25'
SIDE	10'

C1 R=575.00' L=126.28' S65°43'13"E 126.03'
C2 R=325.00' L=71.38' S65°43'13"E 71.23'

LEGEND

EIP	EXISTING IRON PIPE	FES	FLARED END SECTION
RBS	REBAR SET	WM	WATER METER
R/W	RIGHT OF WAY	CO	CLEAN OUT
N/F	NOW OR FORMERLY	FH	FIRE HYDRANT
EIS	EXISTING IRON STAKE	CB	CATCH BASIN



PRELIMINARY
NOT FOR RECORDATION,
SALES OR CONVEYANCE

GLS GRIFFIN LAND SURVEYING, INC.
P. O. BOX 148
FUQUAY-VARINA, NC 27526
(919) - 567 - 1963
FIRM LIC.# C-1345

PLOT PLAN
FOR
BEN STOUT
CONSTRUCTION
ASHLEY HEIGHTS SUBDIVISION
LOT 29
ASHLEY HEIGHTS DRIVE
ABERDEEN, N.C.
HOKE COUNTY QUEWHIFFLE TOWNSHIP

DRAWN BY KDF	DATE 4/17/25
CHECKED BY MPG	SCALE 1" = 40'