

17/453 2 of 4



TOMPKINS  
LAND  
SURVEYING  
P.A.

2181 ASH LITTLE RIVER ROAD NW  
ASH, NORTH CAROLINA 289420  
(919) 979-9005

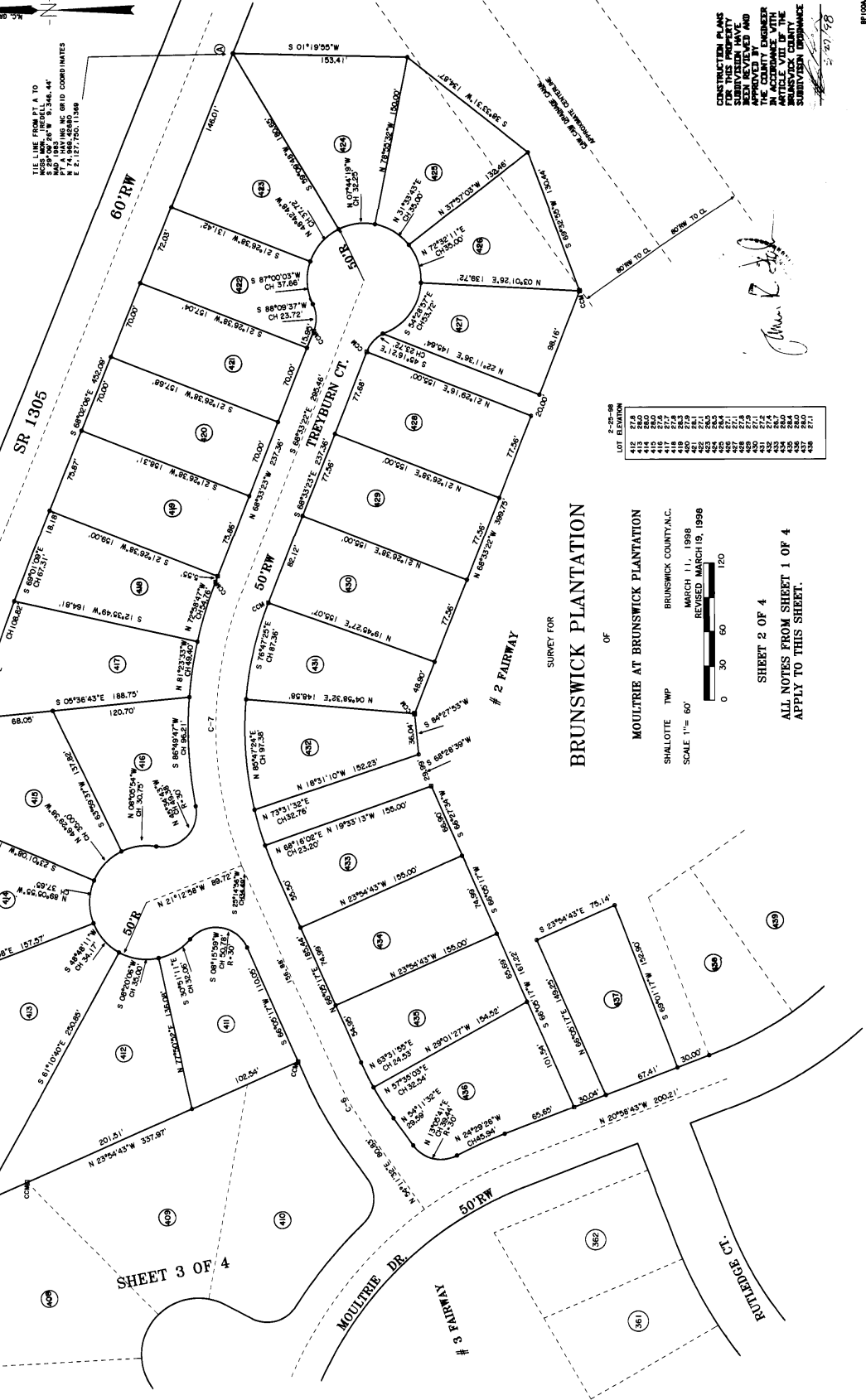
CHANGING

CURVE	POINTS	TANGENT	LENGTH	DELTA	DEGREE	CHORD
C-5	300.00	37.26	48.23	14.27	14.27	14.27
C-6	300.00	37.26	48.23	14.27	14.27	14.27
C-7	300.00	37.26	48.23	14.27	14.27	14.27
C-8	300.00	37.26	48.23	14.27	14.27	14.27
C-9	300.00	37.26	48.23	14.27	14.27	14.27
C-10	100.00	12.42	16.08	4.76	4.76	4.76

DATE: 3-30-98

NO APPROVAL REQUIRED  
CLERK, BRUNSWICK COUNTY  
PLANNING BOARD  
DATE: 3-30-98

THE LINE FROM PT A TO  
MISS MRS. FIRELLI  
AND 188.25' W. 5.346.44'  
AND 188.25' W. 5.346.44'  
E 74.984.28' S 74.984.28'  
E 2.127.750.139'



CONSTRUCTION PLANS  
FOR THIS PROPERTY  
HAVE BEEN REVIEWED AND  
APPROVED BY THE  
PLANNING BOARD IN  
ACCORDANCE WITH  
ARTICLE VII OF THE  
SUBDIVISION ORDINANCE

LOT EXAMINATION

LOT	EXAMINATION
412	277.7
413	277.7
414	277.7
415	277.7
416	277.7
417	277.7
418	277.7
419	277.7
420	277.7
421	277.7
422	277.7
423	277.7
424	277.7
425	277.7
426	277.7
427	277.7
428	277.7
429	277.7
430	277.7
431	277.7
432	277.7
433	277.7
434	277.7
435	277.7
436	277.7

BRUNSWICK PLANTATION  
SURVEY FOR  
MOULTRIE AT BRUNSWICK PLANTATION  
OF  
BRUNSWICK COUNTY, N.C.  
SHALLOTTE TWP  
SCALE 1" = 60'  
MARCH 11, 1998  
REVISED MARCH 15, 1998

SHEET 2 OF 4  
ALL NOTES FROM SHEET 1 OF 4  
APPLY TO THIS SHEET.

Handwritten signature: John R. [unclear]

MAP CABINET 19 PAGE 433 98 MAR 30 AM 10:51 21.00 SL