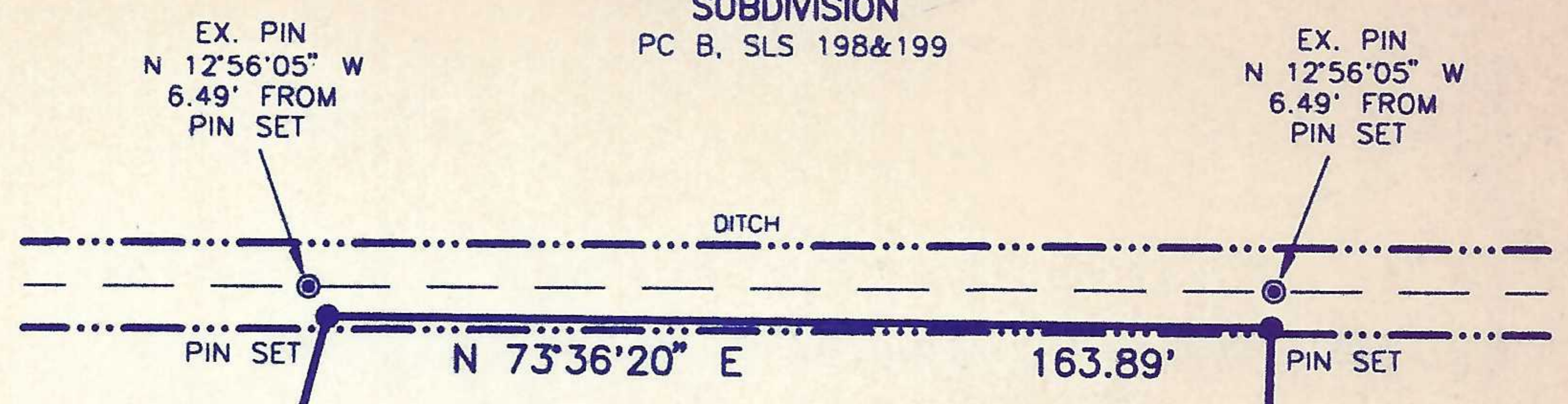
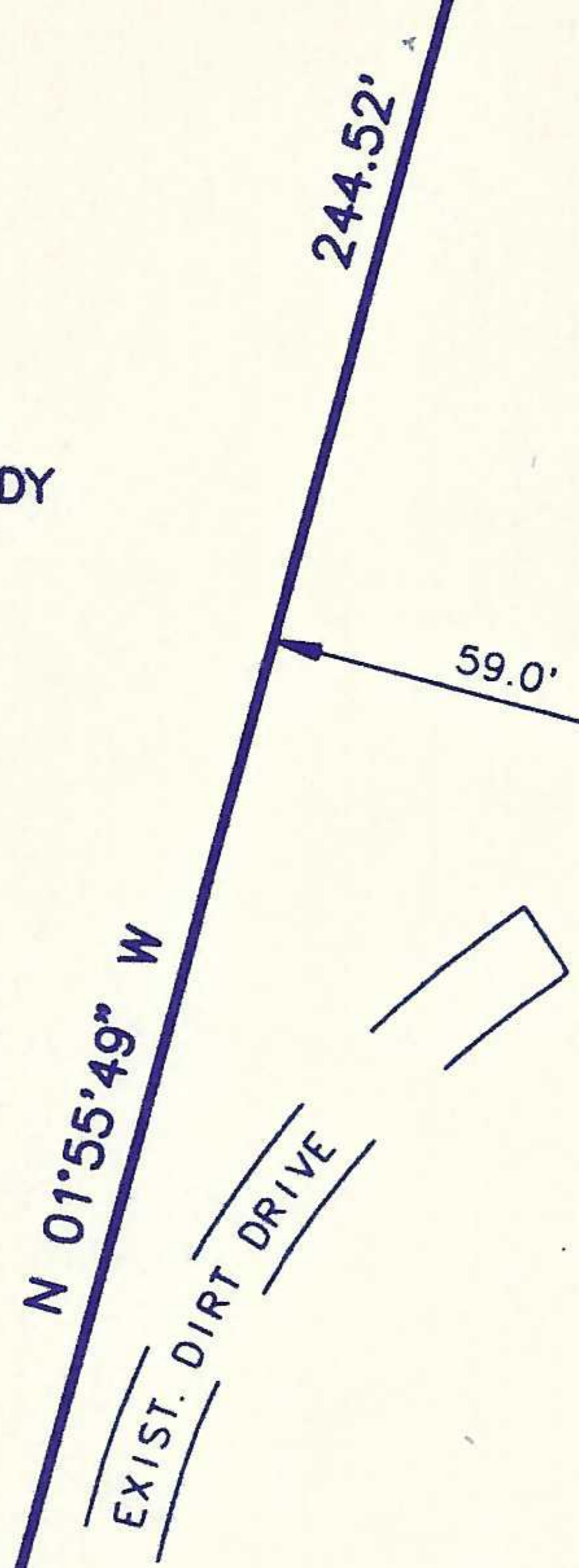


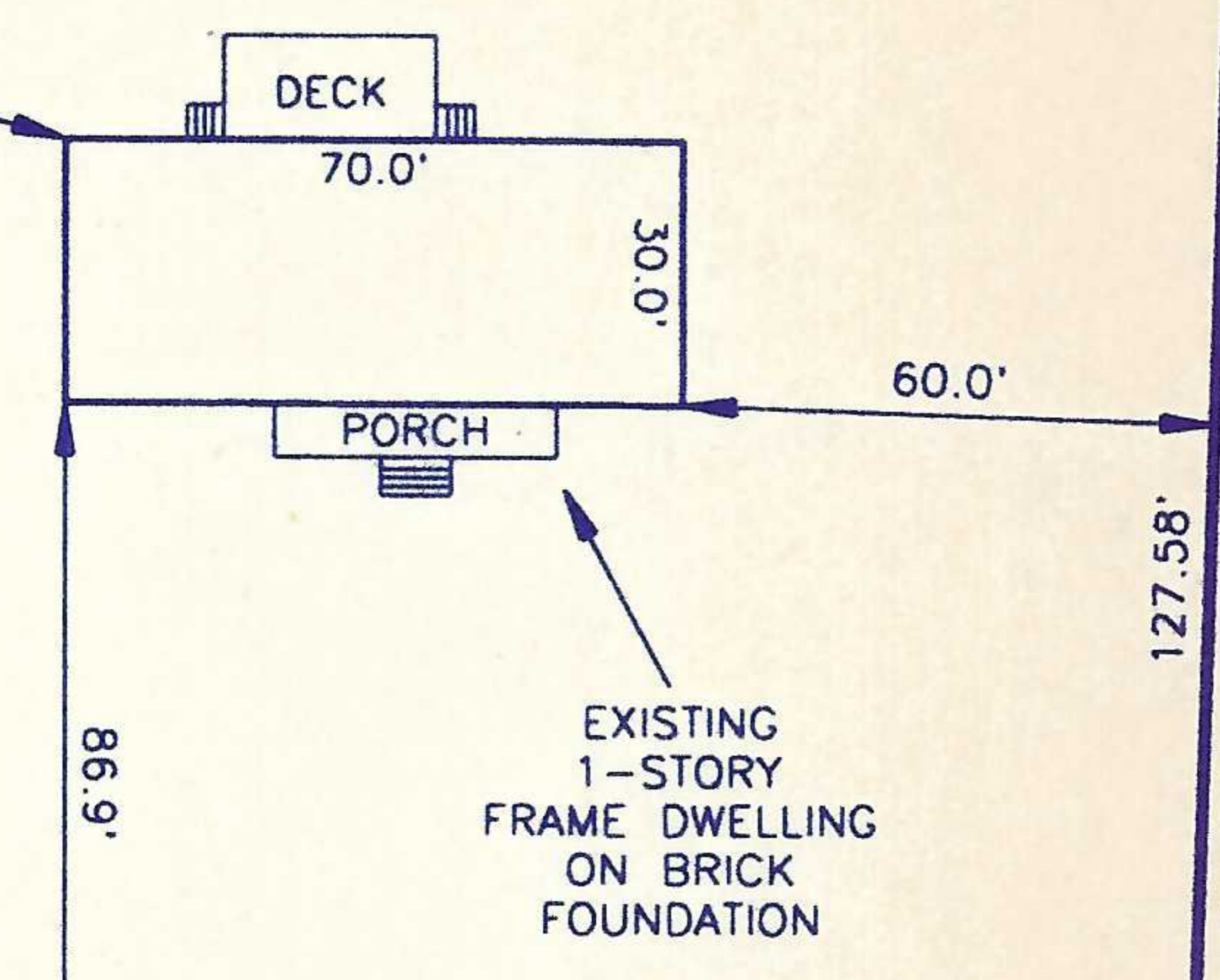
NEALS CREEK PARK
SUBDIVISION
PC B, SLS 198&199



N\F
JIMMY T. DOWDY
JACQUELYN M. DOWDY
DB 284, PG 374



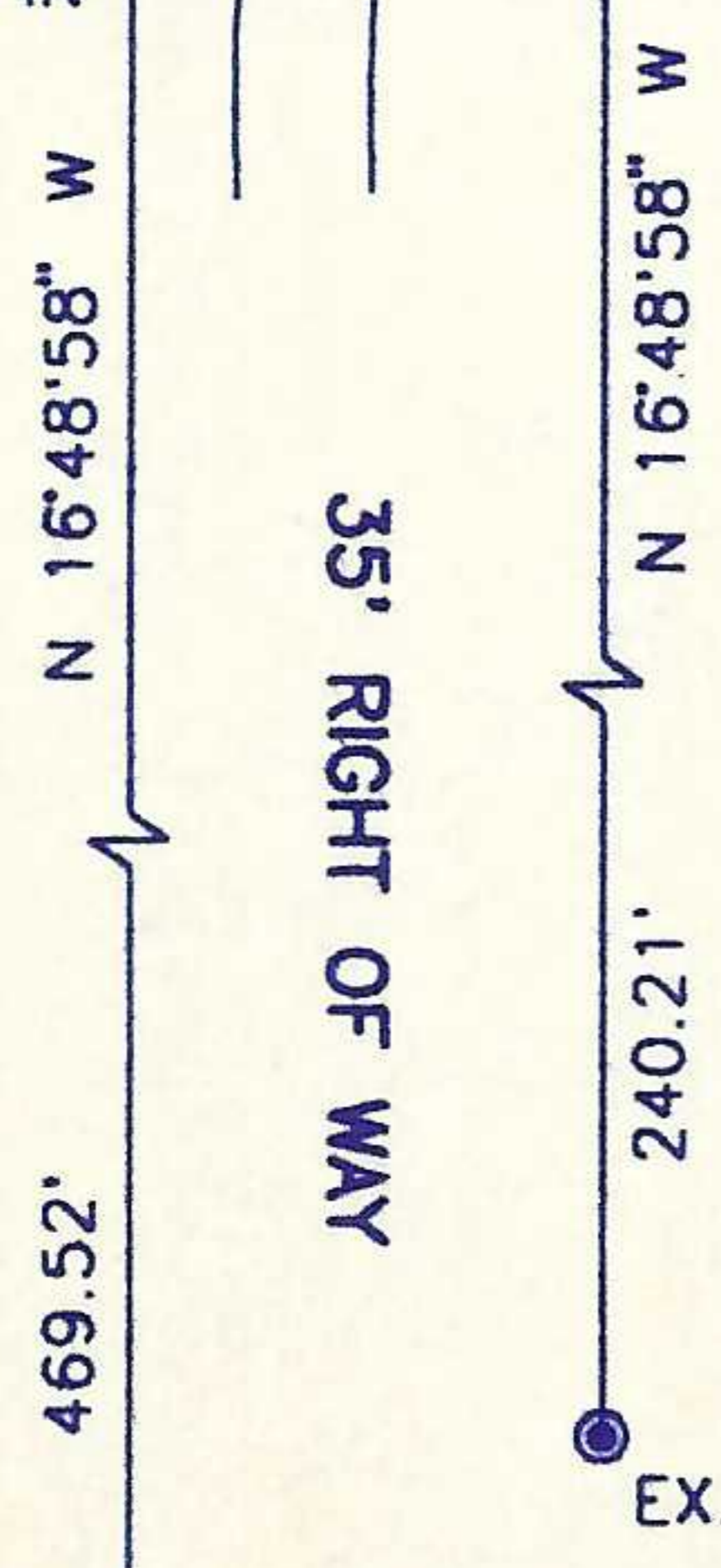
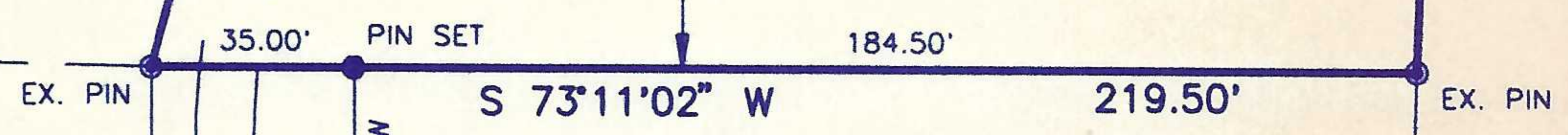
LOT
3
45,218 S.F.



10' INGRESS/
EGRESS EASEMENT

LOT
3
IKE'S LAKE
SUBDIVISION
PC E, SL 200

EZRA GRALEY
SUBDIVISION
PC C, SL 177



LOT
2
TROY C. KIRK
SUBDIVISION

EX. PIN
AT R/W
OF SR 1132

"AS-BUILT"

I, WILLIAM T. ROBBINS, CERTIFY THAT THIS MAP WAS DRAWN UNDER MY SUPERVISION FROM AN ACTUAL SURVEY MADE UNDER MY SUPERVISION, AND MEETS THE REQUIREMENTS OF TITLE 21.

SURVEY FOR
NATHAN E. SPENCER
ENGINEER