

Home report

**8840 Radcliff Drive Northwest, Thomasboro, Calabash,
Brunswick County, North Carolina, United States, 28467**

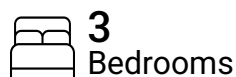


Total Area: 1799 sq. ft

Floor 1: 1032 sq. ft, Floor 2: 767 sq. ft

Excluded: Outdoor Porch 69 sq. ft, Outdoor Patio 218 sq. ft, Outdoor Patio Covered 72 sq. ft, Garage 274 sq. ft

Property summary



Home report

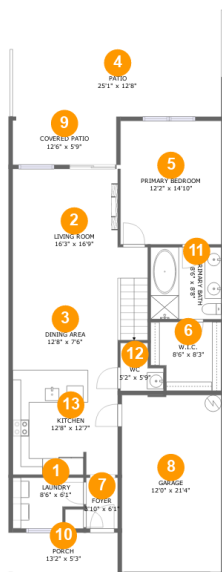
**8840 Radcliff Drive Northwest, Thomasboro, Calabash,
Brunswick County, North Carolina, United States, 28467**

 **1**
Half baths

 **1**
Garages

Home report

8840 Radcliff Drive Northwest, Thomasboro, Calabash, Brunswick County, North Carolina, United States, 28467



Room dimensions

Floor 1

Total:1032sqft

Excluded: 633sqft

#		Max Dimensions	sqft	Included
1	Laundry	8'6" x 6'1"	45 sq. ft	Yes
2	Living Room	16'3" x 16'9"	238 sq. ft	Yes
3	Dining Area	12'8" x 7'6"	109 sq. ft	Yes
4	Patio	25'1" x 12'8"	218 sq. ft	No
5	Primary Bedroom	12'2" x 14'10"	180 sq. ft	Yes
6	W.I.C.	8'6" x 8'3"	65 sq. ft	Yes
7	Foyer	3'10" x 6'1"	23 sq. ft	Yes
8	Garage	12'0" x 21'4"	255 sq. ft	No
9	Covered Patio	12'6" x 5'9"	72 sq. ft	No
10	Porch	13'2" x 5'3"	69 sq. ft	No
11	Primary Bath	8'6" x 8'8"	74 sq. ft	Yes

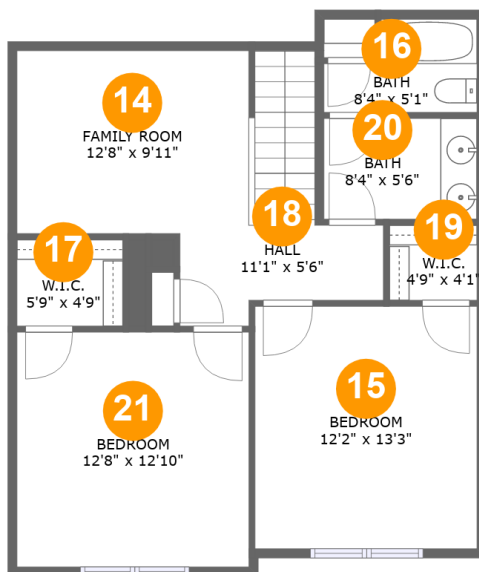
Home report

**8840 Radcliff Drive Northwest, Thomasboro, Calabash,
Brunswick County, North Carolina, United States, 28467**

#		Max Dimensions	sqft	Included
12	WC	5'2" x 5'9"	24 sq. ft	Yes
13	Kitchen	12'8" x 12'7"	159 sq. ft	Yes

Home report

8840 Radcliff Drive Northwest, Thomasboro, Calabash, Brunswick County, North Carolina, United States, 28467



Room dimensions

Floor 2

Total:767sqft

Excluded: 0sqft

#		Max Dimensions	sqft	Included
14	Family Room	12'8" x 9'11"	126 sq. ft	Yes
15	Bedroom	12'2" x 13'3"	161 sq. ft	Yes
16	Bath	8'4" x 5'1"	35 sq. ft	Yes
17	W.I.C.	5'9" x 4'9"	27 sq. ft	Yes
18	Hall	11'1" x 5'6"	83 sq. ft	Yes
19	W.I.C.	4'9" x 4'1"	20 sq. ft	Yes
20	Bath	8'4" x 5'6"	46 sq. ft	Yes
21	Bedroom	12'8" x 12'10"	163 sq. ft	Yes

**8840 Radcliff Drive Northwest, Thomasboro, Calabash,
Brunswick County, North Carolina, United States, 28467**

1 Floor 1 - Laundry



Max Dimensions: 8'6" x 6'1"
Calculated Area: 45 sq. ft
Included: Yes

Heated: Yes
Finished: Yes
Enclosed: Yes
Contiguous: Yes
Permitted: Yes
Wet space: No
Addition: No
Conversion: No

2 Floor 1 - Living Room



Max Dimensions: 16'3" x 16'9"
Calculated Area: 238 sq. ft
Included: Yes

Heated: Yes
Finished: Yes
Enclosed: Yes
Contiguous: Yes
Permitted: Yes
Wet space: No
Addition: No
Conversion: No

8840 Radcliff Drive Northwest, Thomasboro, Calabash,
Brunswick County, North Carolina, United States, 28467

3 Floor 1 - Dining Area



Max Dimensions: 12'8" x
7'6"
Calculated Area: 109 sq. ft
Included: Yes

Heated: Yes
Finished: Yes
Enclosed: Yes
Contiguous:
Yes
Permitted: Yes
Wet space: No
Addition: No
Conversion: No

4 Floor 1 - Patio



Max Dimensions: 25'1" x
12'8"
Calculated Area: 218 sq. ft
Included: No

Heated: No
Finished: Yes
Enclosed: No
Contiguous:
Yes
Permitted: Yes
Wet space: No
Addition: No
Conversion: No

5 Floor 1 - Primary Bedroom



Max Dimensions: 12'2" x
14'10"
Calculated Area: 180 sq. ft
Included: Yes

Heated: Yes
Finished: Yes
Enclosed: Yes
Contiguous:
Yes
Permitted: Yes
Wet space: No
Addition: No
Conversion: No

8840 Radcliff Drive Northwest, Thomasboro, Calabash,
Brunswick County, North Carolina, United States, 28467

6 Floor 1 - W.I.C.



Max Dimensions: 8'6" x 8'3"
Calculated Area: 65 sq. ft
Included: Yes

Heated: Yes
Finished: Yes
Enclosed: Yes
Contiguous: Yes
Permitted: Yes
Wet space: No
Addition: No
Conversion: No

7 Floor 1 - Foyer



Max Dimensions: 3'10" x 6'1"
Calculated Area: 23 sq. ft
Included: Yes

Heated: Yes
Finished: Yes
Enclosed: Yes
Contiguous: Yes
Permitted: Yes
Wet space: No
Addition: No
Conversion: No

8 Floor 1 - Garage



Max Dimensions: 12'0" x 21'4"
Calculated Area: 255 sq. ft
Included: No

Heated: No
Finished: No
Enclosed: Yes
Contiguous: Yes
Permitted: Yes
Wet space: No
Addition: No
Conversion: No

8840 Radcliff Drive Northwest, Thomasboro, Calabash,
Brunswick County, North Carolina, United States, 28467

9 Floor 1 - Covered Patio



Max Dimensions: 12'6" x 5'9"
Calculated Area: 72 sq. ft
Included: No

Heated: No
Finished: Yes
Enclosed: No
Contiguous: Yes
Permitted: Yes
Wet space: No
Addition: No
Conversion: No

10 Floor 1 - Porch



Max Dimensions: 13'2" x 5'3"
Calculated Area: 69 sq. ft
Included: No

Heated: No
Finished: Yes
Enclosed: No
Contiguous: Yes
Permitted: Yes
Wet space: No
Addition: No
Conversion: No

11 Floor 1 - Primary Bath

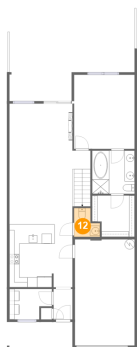


Max Dimensions: 8'6" x 8'8"
Calculated Area: 74 sq. ft
Included: Yes

Heated: Yes
Finished: Yes
Enclosed: Yes
Contiguous: Yes
Permitted: Yes
Wet space: Yes
Addition: No
Conversion: No

8840 Radcliff Drive Northwest, Thomasboro, Calabash,
Brunswick County, North Carolina, United States, 28467

12 Floor 1 - WC



Max Dimensions: 5'2" x 5'9"
Calculated Area: 24 sq. ft
Included: Yes

Heated: Yes
Finished: Yes
Enclosed: Yes
Contiguous: Yes
Permitted: Yes
Wet space: Yes
Addition: No
Conversion: No

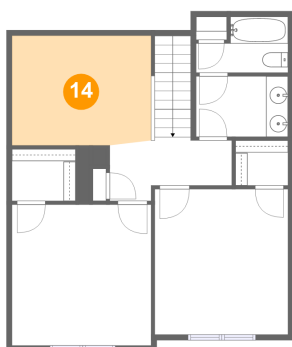
13 Floor 1 - Kitchen



Max Dimensions: 12'8" x
12'7"
Calculated Area: 159 sq. ft
Included: Yes

Heated: Yes
Finished: Yes
Enclosed: Yes
Contiguous:
Yes
Permitted: Yes
Wet space: No
Addition: No
Conversion: No

14 Floor 2 - Family Room

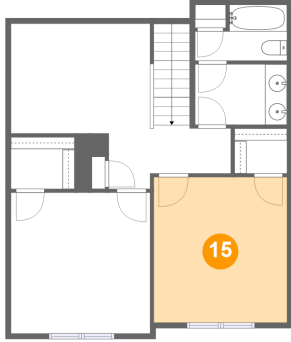


Max Dimensions: 12'8" x
9'11"
Calculated Area: 126 sq. ft
Included: Yes

Heated: Yes
Finished: Yes
Enclosed: Yes
Contiguous:
Yes
Permitted: Yes
Wet space: No
Addition: No
Conversion: No

8840 Radcliff Drive Northwest, Thomasboro, Calabash,
Brunswick County, North Carolina, United States, 28467

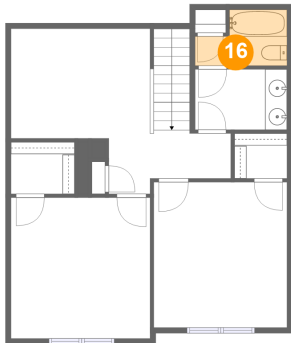
15 Floor 2 - Bedroom



Max Dimensions: 12'2" x 13'3"
Calculated Area: 161 sq. ft
Included: Yes

Heated: Yes
Finished: Yes
Enclosed: Yes
Contiguous: Yes
Permitted: Yes
Wet space: No
Addition: No
Conversion: No

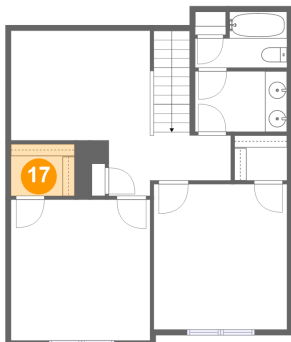
16 Floor 2 - Bath



Max Dimensions: 8'4" x 5'1"
Calculated Area: 35 sq. ft
Included: Yes

Heated: Yes
Finished: Yes
Enclosed: Yes
Contiguous: Yes
Permitted: Yes
Wet space: Yes
Addition: No
Conversion: No

17 Floor 2 - W.I.C.

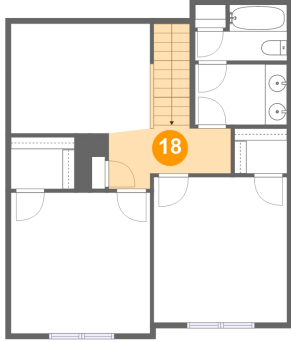


Max Dimensions: 5'9" x 4'9"
Calculated Area: 27 sq. ft
Included: Yes

Heated: Yes
Finished: Yes
Enclosed: Yes
Contiguous: Yes
Permitted: Yes
Wet space: No
Addition: No
Conversion: No

8840 Radcliff Drive Northwest, Thomasboro, Calabash,
Brunswick County, North Carolina, United States, 28467

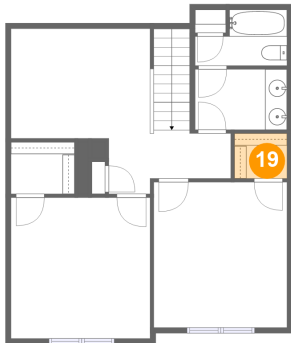
18 Floor 2 - Hall



Max Dimensions: 11'1" x 5'6"
Calculated Area: 83 sq. ft
Included: Yes

Heated: Yes
Finished: Yes
Enclosed: Yes
Contiguous: Yes
Permitted: Yes
Wet space: No
Addition: No
Conversion: No

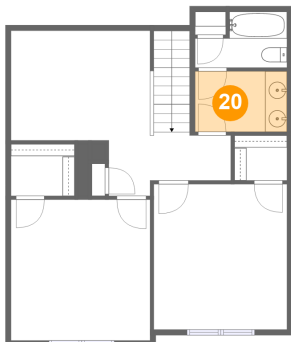
19 Floor 2 - W.I.C.



Max Dimensions: 4'9" x 4'1"
Calculated Area: 20 sq. ft
Included: Yes

Heated: Yes
Finished: Yes
Enclosed: Yes
Contiguous: Yes
Permitted: Yes
Wet space: No
Addition: No
Conversion: No

20 Floor 2 - Bath



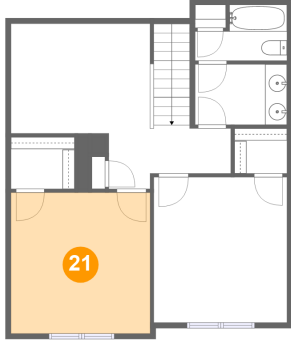
Max Dimensions: 8'4" x 5'6"
Calculated Area: 46 sq. ft
Included: Yes

Heated: Yes
Finished: Yes
Enclosed: Yes
Contiguous: Yes
Permitted: Yes
Wet space: Yes
Addition: No
Conversion: No

Home report

**8840 Radcliff Drive Northwest, Thomasboro, Calabash,
Brunswick County, North Carolina, United States, 28467**

21 Floor 2 - Bedroom



Max Dimensions: 12'8" x
12'10"
Calculated Area: 163 sq. ft
Included: Yes

Heated: Yes
Finished: Yes
Enclosed: Yes
Contiguous:
Yes
Permitted: Yes
Wet space: No
Addition: No
Conversion: No