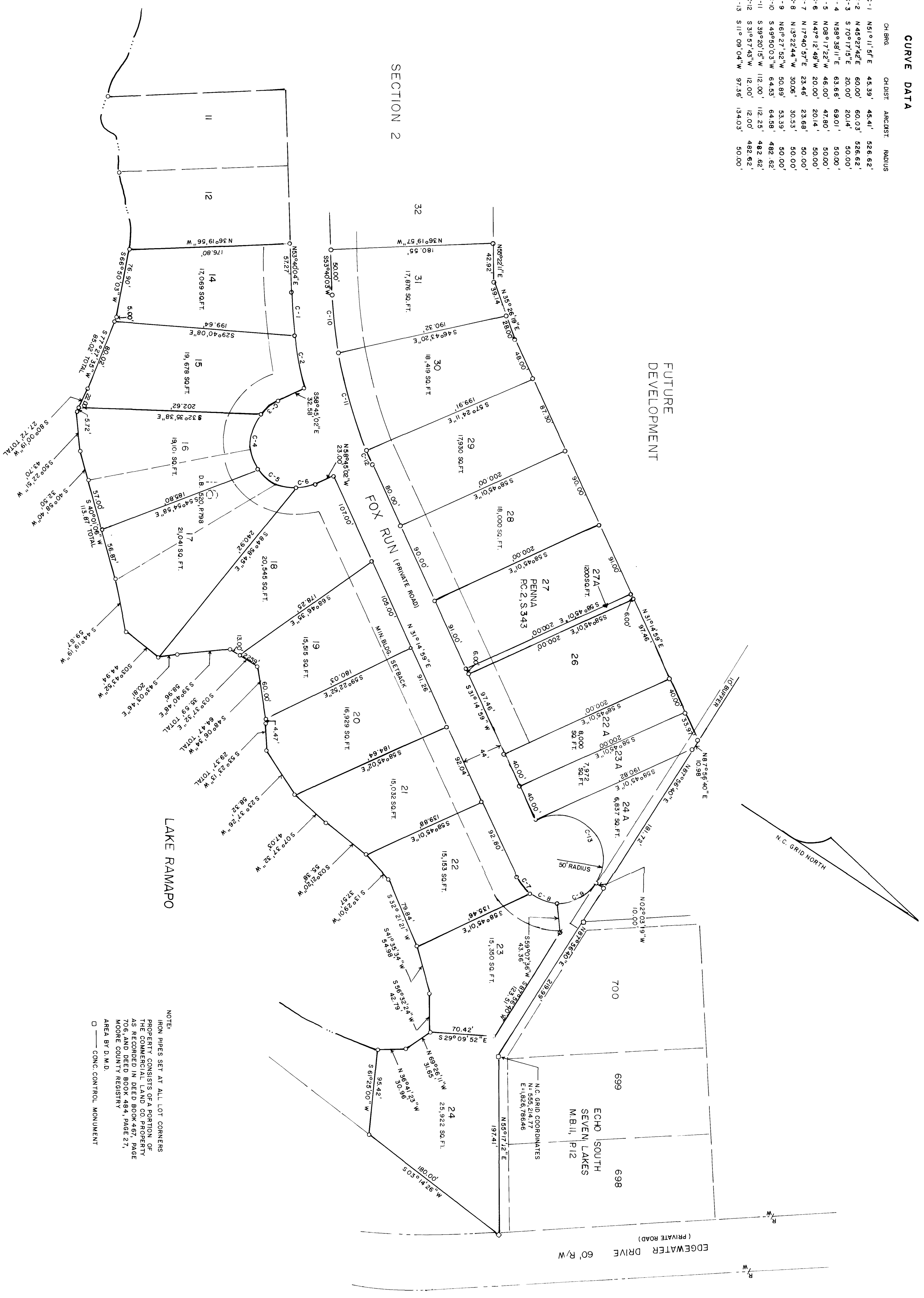


*Map 3 - Slide 74*  
*Approved by Moore County Board of Commissioners*  
*By: Mayor R. Hayslip*

PAUL O. SEAMAN  
 1955  
 Ronald J. Jordan  
 LARRY S. JOHNSON  
 1989, 1995  
 JOHN B. JOHNSON  
 1991, 1995

**CURVE DATA**

CH. BRG.	CH. DIST.	ARC DIST.	RADIUS	
C-1	N51°11'57"E	45.39'	45.41'	528.62'
C-2	N45°27'42"E	60.00'	60.03'	528.62'
C-3	S70°17'15"E	20.00'	20.14'	50.00'
C-4	N59°38'11"E	65.66'	69.01'	50.00'
C-5	N08°17'22"W	46.00'	47.80'	50.00'
C-6	N47°12'49"W	20.00'	20.14'	50.00'
C-7	N17°40'57"E	23.46'	23.68'	50.00'
C-8	N13°22'44"W	30.06'	30.53'	50.00'
C-9	N67°27'52"W	50.89'	53.39'	50.00'
C-10	S49°40'03"W	64.83'	64.88'	482.82'
C-11	S39°20'15"W	112.00'	112.25'	482.82'
C-12	S31°37'45"W	12.00'	12.00'	482.82'
C-13	S11°09'04"W	97.36'	134.03'	50.00'



NOTE:  
 IRON PINS SET AT ALL LOT CORNERS  
 OF THIS CONSTRUCTION SHALL BE  
 THE SAME AS THE PINS SET AT  
 THE CORNERS OF THE ORIGINAL  
 706, AND DEED BOOK 484, PAGE 27,  
 MOORE COUNTY REGISTRY  
 AREA BY D.M.D.  
 □ CONIC CONTROL MONUMENT

**RAMAPO VILLAGE**  
**REVISION OF SECTION THREE**  
**SEVEN LAKES**  
**MINERAL SPRINGS TOWNSHIP**  
**MOORE COUNTY, N.C.**



SURVEY FOR  
 LAKEVIEW CONSTRUCTION  
 PO. BOX 569  
 WEST END, N.C. 27376

DATE	1-15-85
TRACED BY	3082
SCALE	1"=60'
BY	HP/JONS