

2604

2,604 s.f. (Approx.)
 4 Bedroom / 3 Baths
 2 Car Garage
 Recreational Room

*"Regardless of price, size, or location, all buyers want their builder to deliver value."
 Wayne Adams - Company Founder*



Elevation "A"



Elevation "B"



*Elevation "A"

*Brick Option



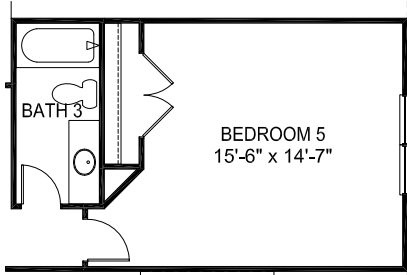
*Elevation "B"

*Brick Option

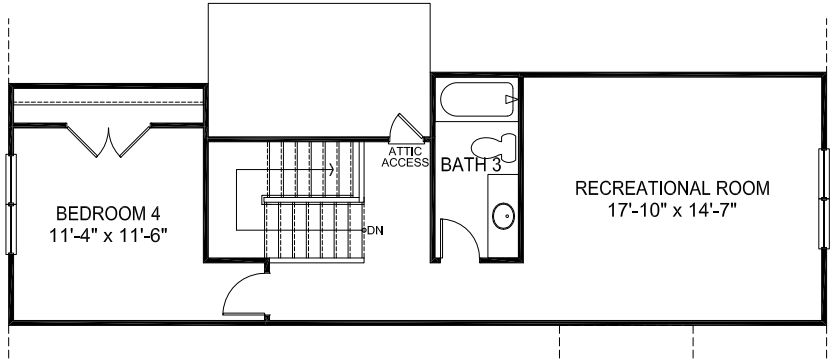
Continuing a policy of constant research and improvement, Adams Homes reserves the right of price, plan, or specification change without notice or prior obligation: optional feature may be shown, Artist's rendering may vary from actual scale. All dimensions are approximate. © Copyright 2020 Adams Homes

2604

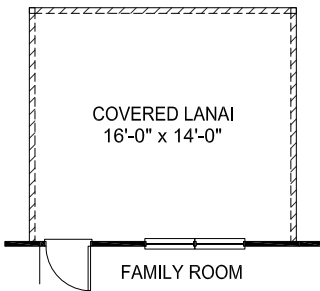
2,604 s.f. (Approx.)
 4 Bedroom / 3 Baths
 2 Car Garage
 Recreational Room



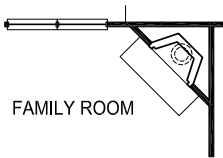
**Opt. Bedroom 5 ILO
 Recreational Room**



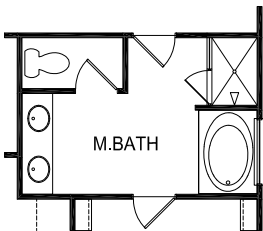
Second Floor



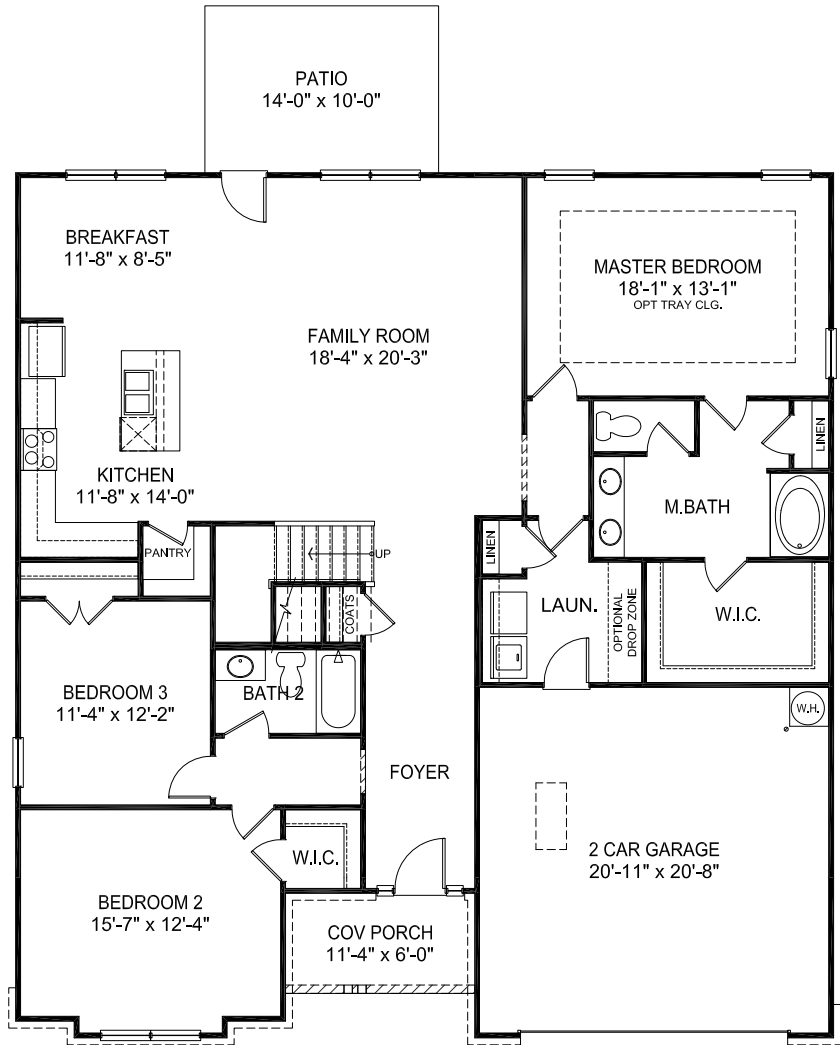
Opt. Covered Lanai



Opt. Fireplace



Opt. Master Bath



First Floor

NC #59785
 SC #RBB.22464
 GA #RBQA005711

Important Disclaimer: This floor plan is not to scale. Square footage and room dimensions are approximate. Square footage calculations are based on foundation dimensions only and may vary from finished square footage of the home as constructed. Variations of this floor plan exist that may not be represented in this image.

Follow Us: [f](#) [t](#) [in](#) [v](#) [s](#) or <http://www.adamshomes.com>