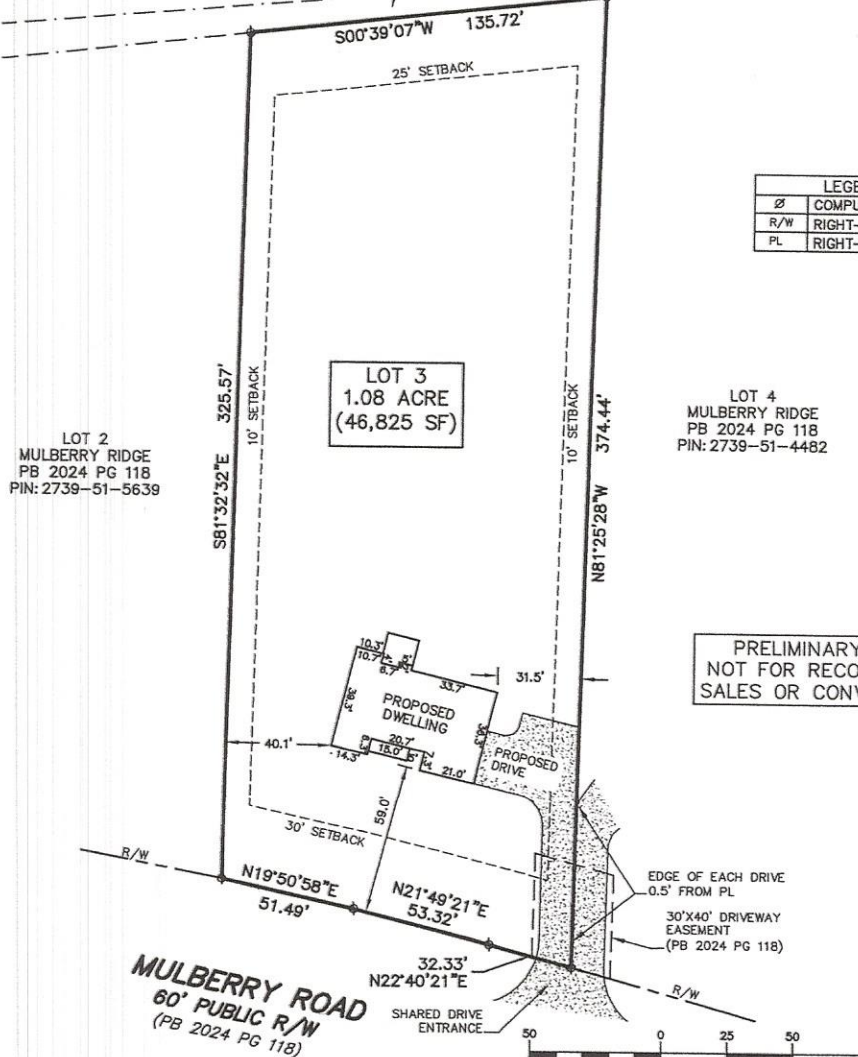


N/F  
MICHAEL E. HORWIN  
REVOCABLE TRUST  
DB 2278 PG 747  
PB 2021 PG 158  
PIN: 2739-72-4322

N/F  
MICHAEL E. HORWIN  
REVOCABLE TRUST  
DB 2350 PG 1096  
PB 2023 PG 305  
PIN: 2739-72-4322



LEGEND	
⊘	COMPUTED POINT
R/W	RIGHT-OF-WAY LINE
PL	RIGHT-OF-WAY LINE

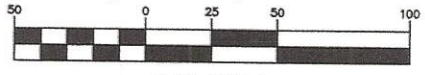
LOT 2  
MULBERRY RIDGE  
PB 2024 PG 118  
PIN: 2739-51-5639

LOT 3  
1.08 ACRE  
(46,825 SF)

LOT 4  
MULBERRY RIDGE  
PB 2024 PG 118  
PIN: 2739-51-4482

PRELIMINARY PLAT  
NOT FOR RECORDATION,  
SALES OR CONVEYANCES

**MULBERRY ROAD**  
60' PUBLIC R/W  
(PB 2024 PG 118)



( IN FEET )  
1 inch = 50 ft.

**NOTES:**

- AREAS COMPUTED BY COORDINATE CALCULATIONS
- ALL DISTANCES SHOWN ARE HORIZONTAL

**Pomeroy Surveying & Mapping, PLLC**  
License No.: P-2841

PO BOX 103  
BAILEY, NC. 27807

252-801-3934  
Info@pomsurvey.com

Date: AUGUST, 2024  
Client: BUIWOO  
Scale: 1"=50'

Project: 24-064  
County PIN: 2739-51-5505  
Revision:

**PLOT PLAN FOR  
CHESAPEAKE HOMES**

MULBERRY ROAD  
LOT 3, MULBERRY RIDGE, PB 2024 PG 118  
DUNN TOWNSHIP  
FRANKLIN COUNTY, NORTH CAROLINA

