

GENERAL NOTES

1. ALL CONSTRUCTION TO CONFORM TO CURRENT TOWNSHIP OF HOLLY RIDGE STANDARDS AND SPECIFICATIONS.
2. ALL RIGHT OF WAY TO BE PRIVATE. SEE TYPICAL ROAD SECTIONS.
3. ALL UTILITIES, INCLUDING ELECTRIC AND CATV, ARE TO BE UNDERGROUND.
4. FINAL PLAT TO BE RECORDED IN ACCORDANCE WITH ALL TOWNSHIP OF HOLLY RIDGE REQUIREMENTS.
5. ALL AREAS NOT INCLUDED IN ONE OF THE 820 PROPOSED LOTS TO BE DESIGNATED AS COMMON AREA AND/OR OPEN SPACE AND WILL BE UNDER CONTROL OF THE HOME OWNER ASSOCIATION.
6. SUBDIVISION TO BE SERVED BY A CENTRALIZED PRIVATE WATER SYSTEM AND A CENTRALIZED PRIVATE WASTE WATER SYSTEM.
7. ALL PARKS DEDICATED TO USE FOR PROPERTY OWNERS OF SUMMERHOUSE AT EVERETT BAY.
8. WETLANDS CAUTION: PROSPECTIVE BUYERS ARE CAUTIONED THAT PORTIONS OF THE LOTS SHOWN ON THIS PLAT ARE RESTRICTED IN USE BY WETLANDS AND WATERS JURISDICTION PURSUANT TO THE US ARMY CORPS OF ENGINEERS SECTION 404 REGULATIONS. INDIVIDUAL LOT REVIEWS TO ENSURE COMPLIANCE WITH THEIR FEDERAL LAWS AND REGULATIONS ARE ENCOURAGED. VERIFICATION OF LOCATION AND RESTRICTIONS SHOULD BE MADE PRIOR TO INDIVIDUAL LOT DEVELOPMENT.
9. ONLY ONE (1) PRINCIPAL STRUCTURE PER LOT SHALL BE ALLOWED OR ANOTHER STATEMENT AS TO THE PROPOSED USE OF THE PROPERTY.
10. THIS TRACT IS SUBJECT TO FLOOD HAZARD AREAS (MAP REFERENCE AND DATE AS SHOWN ON COVER).
11. MAINTENANCE FOR EASEMENTS OUTSIDE OF NC DEPARTMENT OF TRANSPORTATION RIGHT-OF-WAYS ARE THE RESPONSIBILITY OF THE PROPERTY OWNER (OR POA).
12. SIGHT DISTANCE EASEMENTS SHOWN HEREON SHALL REMAIN FREE OF ALL STRUCTURES, TREES, SHRUBBERY AND SIGNS, EXCEPT UTILITY POLES, FIRE HYDRANTS, AND TRAFFIC CONTROL SIGNS.
13. 15' FRONT SETBACKS, 5' SIDE SETBACKS AND 20' REAR SETBACKS.
14. MAXIMUM BUILDING HEIGHT TO TOP OF ROOF SHALL BE 50'.
15. MAXIMUM PERVIOUS AREA FOR EACH LOT SHALL BE IN ACCORDANCE WITH THE DIVISION OF WATER QUALITY STORM WATER PERMIT.

SURVEY NOTES:

1. TIED TO NGVD 88 AND NAD 83
2. MARSH LOCATIONS DONE BY GPS L1 AND L2 LOCK
3. RATIO OF PRECISION AS CALCULATED IS 1:10,000
4. SCALE FACTOR EQUALS 0.999960173 COMBINED SCALE FACTOR EQUALS 0.999960079

PROJECT STATISTICS

TOWNSHIP: HOLLY RIDGE
 ZONING: FLEXIBLE R.R., P.U.D.
 TAX PARCELS #'S: 748-3, 762-43

OWNER/DEVELOPER: R. A. NORTH DEVELOPMENT 1, INC.
 110 MATTHEWS STATION ST., SUITE 20
 MATTHEWS, NC 28105
 (704) 321-0401

LAND PLANNER: WATERFRONT COMMUNITIES INC.
 3129 SPRINGBANK LANE
 CHARLOTTE, NC 28226
 (704) 847-6006

SURVEYOR/ENGINEERING: CAROLINA ENGINEERS, P.A.
 P.O. BOX 1595
 NEW BERN, NC 28563
 (252) 633-2424

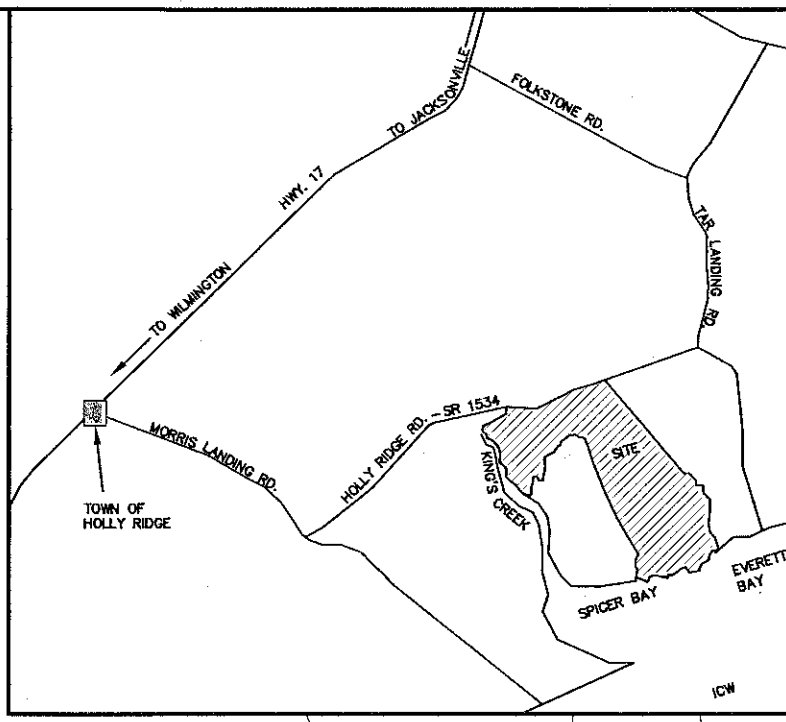
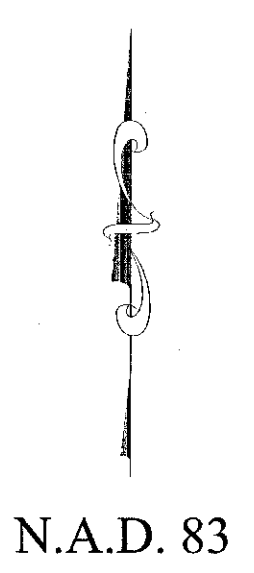
DEVELOPMENT DATA

PHASE I
 TOTAL ACRAGE: 281.38 AC
 TOTAL HOUSING UNITS: 620 UNITS
 GROSS DENSITY: 2.2 UNITS/ACRE

PHASE II
 TOTAL ACRAGE: 232.17 AC
 TOTAL HOUSING UNITS: 409 UNITS
 GROSS DENSITY: 1.76 UNITS/ACRE

PHASE I & II TOTAL
 TOTAL ACRAGE: 513.55 AC
 TOTAL HOUSING UNITS: 1029 UNITS
 GROSS DENSITY: 2.00 UNITS/ACRE

PRIVATE OPEN SPACE: 85.42 AC
 POND AREA: 65.23 AC
 LF OF PRIVATE STREET: 52,227'
 AREA IN R/W (60' TYP. WIDTH): 60 AC
 FRONT SETBACK: 15'
 SIDE SETBACK: 5'
 REAR SETBACK: 20'
 SMALLEST LOT SIZE: 6,168 SF
 AVERAGE LOT SIZE: 0.3 AC
 MAXIMUM BUILDING HEIGHT: 50'



NO.	REVISION LINE CLARITY AND SCALE	DESCRIPTION	DATE	APPROVED
1			8/03/06	CCH

LEGEND

--- FLOOD ZONE "AE" BASE FLOOD 8.0
 REF. FEMA MAPS 3720424700J
 3720425600J AND 3720425700J
 DATED NOVEMBER 3, 2005

--- FLOOD ZONE "A1" BASE FLOOD 9.0
 REF. FEMA MAPS 3720424700J
 3720425600J AND 3720425700J
 DATED NOVEMBER 3, 2005

--- FLOOD ZONE "VE" BASE FLOOD 10.0
 REF. FEMA MAPS 3720424700J
 3720425600J AND 3720425700J
 DATED NOVEMBER 3, 2005

--- 404 WETLANDS

--- NHW - NATURAL HIGH WATER

--- ULCW - UPPER LIMITS COASTAL WETLANDS

--- 75' AEC

--- 30' BUFFER

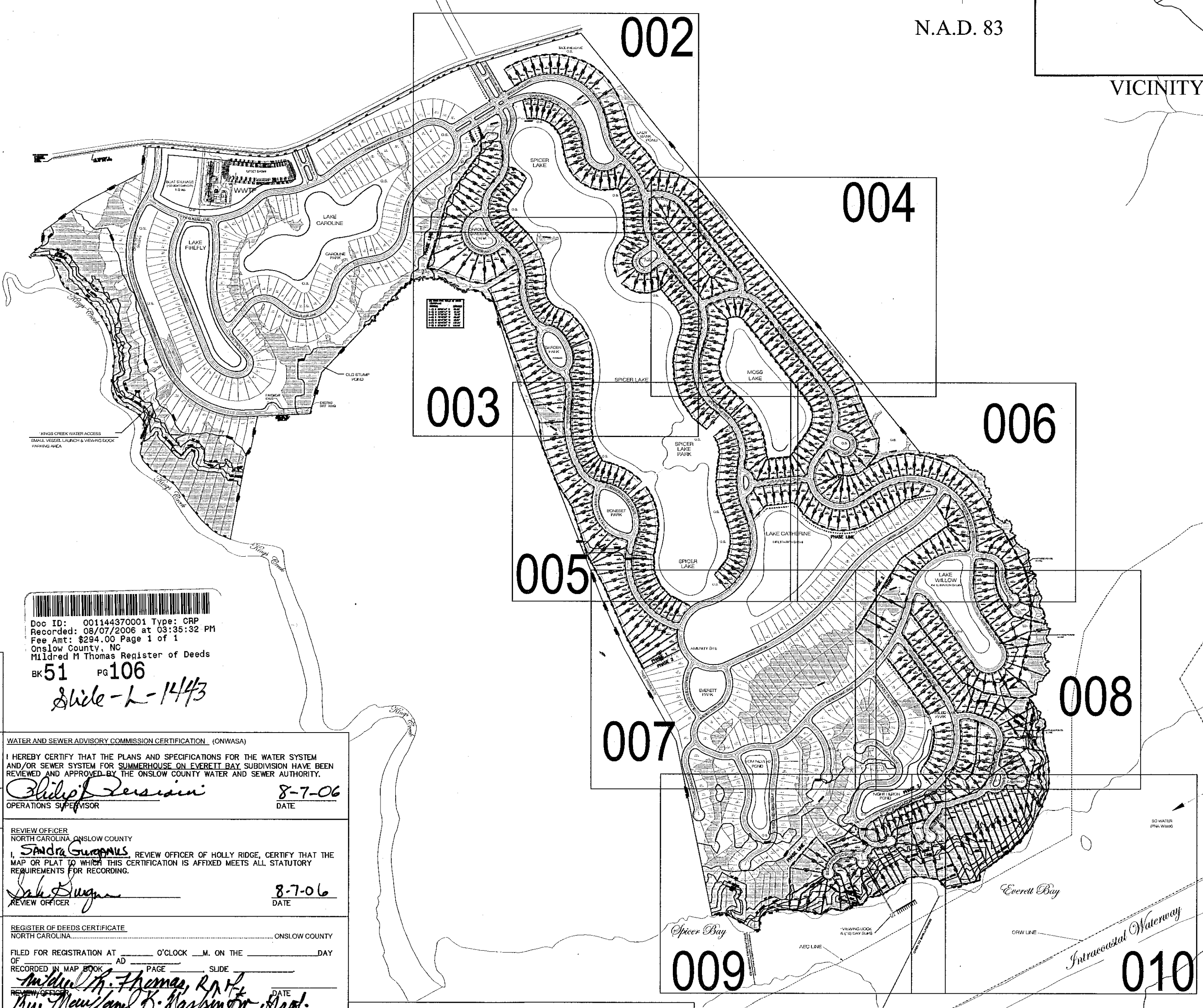
--- CONCRETE MONUMENT

--- 404 WETLANDS

--- SB - SETBACK LINE

--- UTILITY EASEMENT

--- WITNESS POINT



Doc ID: 001144370001 Type: CRP
 Recorded: 08/07/2006 at 03:35:32 PM
 Fee Amt: \$294.00 Page 1 of 1
 Onslow County, NC
 Mildred M Thomas Register of Deeds
 BK 51 PG 106
 Slide - L-1443

CERTIFICATE OF OWNERSHIP

I, Randy D. Huddle, HEREBY CERTIFY THAT I AM THE OWNER OF THE PROPERTY SHOWN AND DESCRIBED HEREON, WHICH IS LOCATED IN THE SUBDIVISION JURISDICTION OF THE TOWN OF HOLLY RIDGE AND THAT I HEREBY ADOPT THIS PLAN OF SUBDIVISION WITH MY FREE CONSENT, ESTABLISH MINIMUM BUILDING SETBACK LINES, AND DEDICATE ALL STREETS, ALLEYS, WALKS, PARKS, WATERLINES, OTHER SITES, IMPROVEMENTS, PERPETUALLY RESERVE, AND EASEMENTS TO PUBLIC OR PRIVATE USE AS DESIGNATED AND NOTED.

OWNER: R.A. NORTH DEVELOPMENT 1, INC. DATE: 8-2-06

OWNER: _____ DATE: _____

WATER AND SEWER ADVISORY COMMISSION CERTIFICATION (ONWASA)

I HEREBY CERTIFY THAT THE PLANS AND SPECIFICATIONS FOR THE WATER SYSTEM AND/OR SEWER SYSTEM FOR SUMMERHOUSE ON EVERETT BAY SUBDIVISION HAVE BEEN REVIEWED AND APPROVED BY THE ONSLOW COUNTY WATER AND SEWER AUTHORITY.

Philip P. Persiani OPERATIONS SUPERVISOR DATE: 8-7-06

REVIEW OFFICER
 NORTH CAROLINA, ONSLOW COUNTY
 I, Sandra Gupton, REVIEW OFFICER OF HOLLY RIDGE, CERTIFY THAT THE MAP OR PLAT TO WHICH THIS CERTIFICATION IS AFFIXED MEETS ALL STATUTORY REQUIREMENTS FOR RECORDING.

Sandra Gupton REVIEW OFFICER DATE: 8-7-06

REGISTER OF DEEDS CERTIFICATE
 NORTH CAROLINA, ONSLOW COUNTY

FILED FOR REGISTRATION AT _____ O'CLOCK _____ M. ON THE _____ DAY OF _____ AD _____ PAGE _____ SLIDE _____

Mildred M. Thomas REGISTER OF DEEDS DATE: _____

STREET DISCLOSURE STATEMENT

ALL STREETS HEREON ARE INTENDED FOR PRIVATE USE AND ARE NOT INTENDED TO BE ACCEPTED BY A PUBLIC SYSTEM. THE REPAIR AND MAINTENANCE OF THE STREETS ARE THE RESPONSIBILITY OF THE HOMEOWNER'S ASSOCIATION OR PROPERTY OWNER'S ASSOCIATION.

Randy D. Huddle OWNER/AUTHORIZED AGENT DATE: 8-2-06

CERTIFICATE OF APPROVAL FOR RECORDING

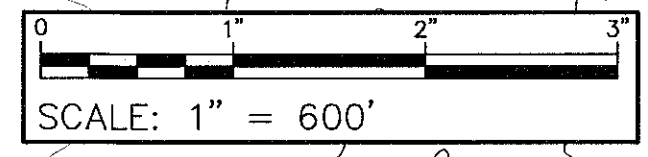
I HEREBY CERTIFY THAT THE SUBDIVISION PLAT SHOWN HEREON HAS BEEN FOUND TO COMPLY WITH SUBDIVISION REGULATIONS OF THE TOWN OF HOLLY RIDGE, NORTH CAROLINA, AND THAT THIS PLAT HAS BEEN APPROVED BY THE HOLLY RIDGE PLANNING DEPARTMENT FOR RECORDING IN THE OFFICE OF THE REGISTER OF DEEDS OF ONSLOW COUNTY.

William SUBDIVISION ADMINISTRATOR DATE: 8-3-06

CERTIFICATE OF IMPROVEMENTS INSTALLATION/GUARANTEE

I HEREBY CERTIFY THAT ALL IMPROVEMENTS HAVE EITHER BEEN INSTALLED OR GUARANTEED BY AN APPROVED SECURITY FOR THE SUMMERHOUSE ON EVERETT BAY SUBDIVISION AND THAT THE FILING FEE FOR THIS PLAT HAS BEEN PAID.

Randy D. Huddle OWNER/AUTHORIZED AGENT DATE: 8-2-06



SEAL OF SURVEYOR

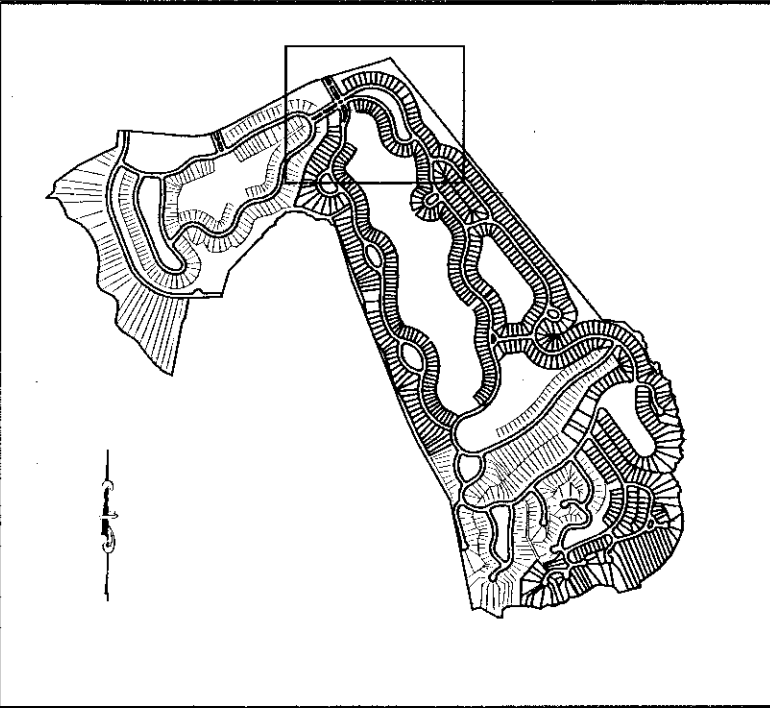
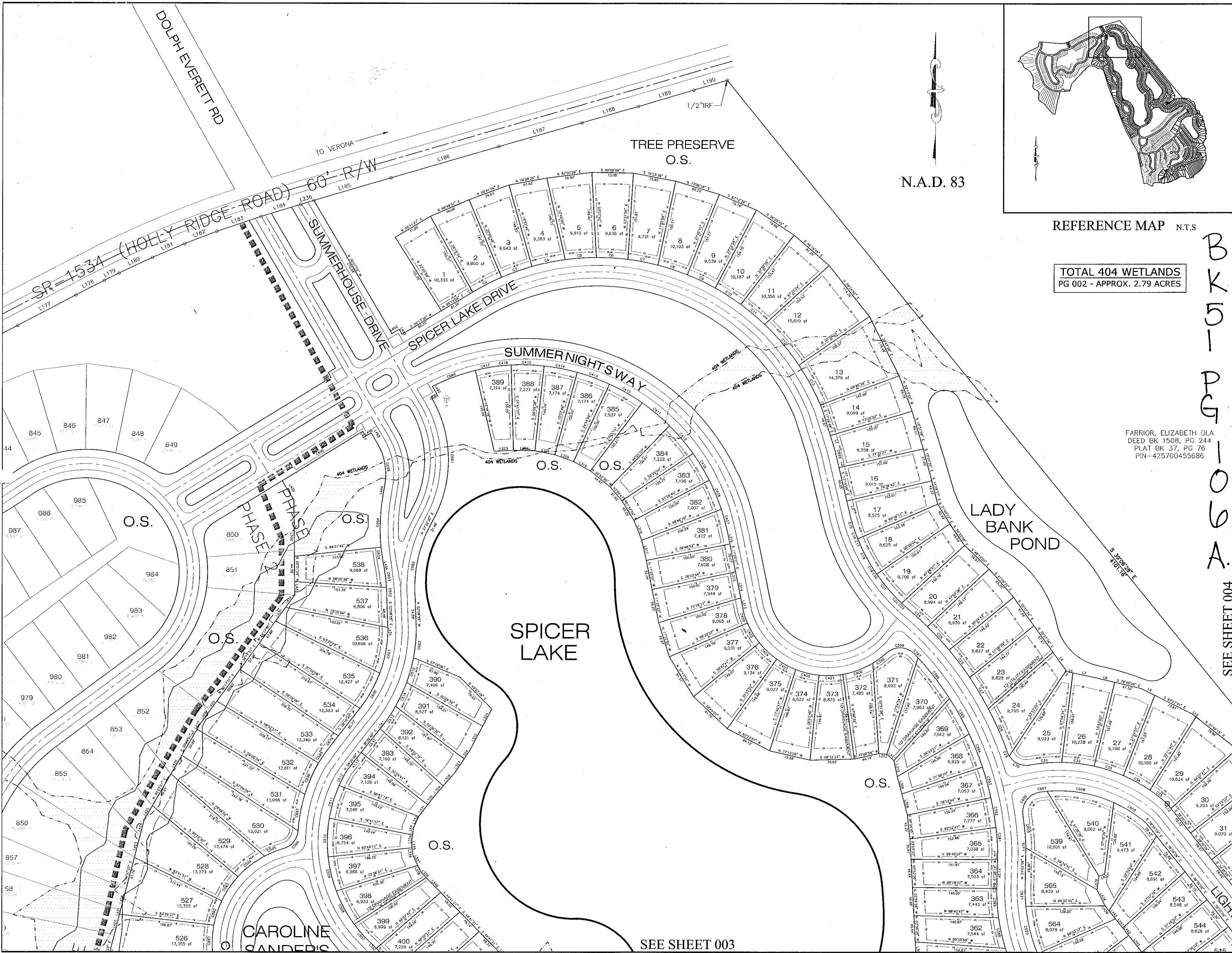
JACK P. HUDDLE
 LAND SURVEYOR
 L-1772

REGISTRATION NUMBER: _____

CAROLINA ENGINEERS
 P.O. DRAWER 1578
 NEW BERN, NC 28563
 252.633.2424

SUMMERHOUSE ON
 EVERETT BAY
 HOLLY RIDGE, NORTH CAROLINA
 FINAL PLAT - PHASE 1

PROJECT NO: CE-335
 DATE: 06/13/06
 SURVEYED BY: B. HARRELL
 DRAWN BY: S. BAKER
 CHECKED BY: C. HUDDLE
 APPROVED BY: J. HUDDLE
 SCALE: 1" = 600'
 DRAWING NO.: _____
 SHEET 1 OF 14
CVR

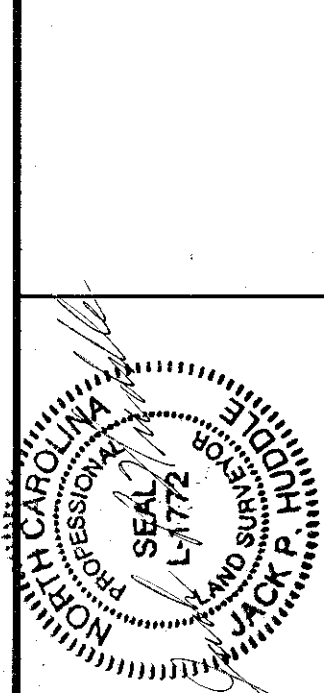


REFERENCE MAP N.T.S.

TOTAL 404 WETLANDS
PG 002 - APPROX. 2.79 ACRES

FARRIOR, ELIZABETH OLA
DEED BK 1508, PG 244
PLAT BK 37, PG 76
PIN-425700455686

NO.	DESCRIPTION	DATE	APPROVED
1	REVISED LINE CLARITY AND SCALE	8/02/06	CCH

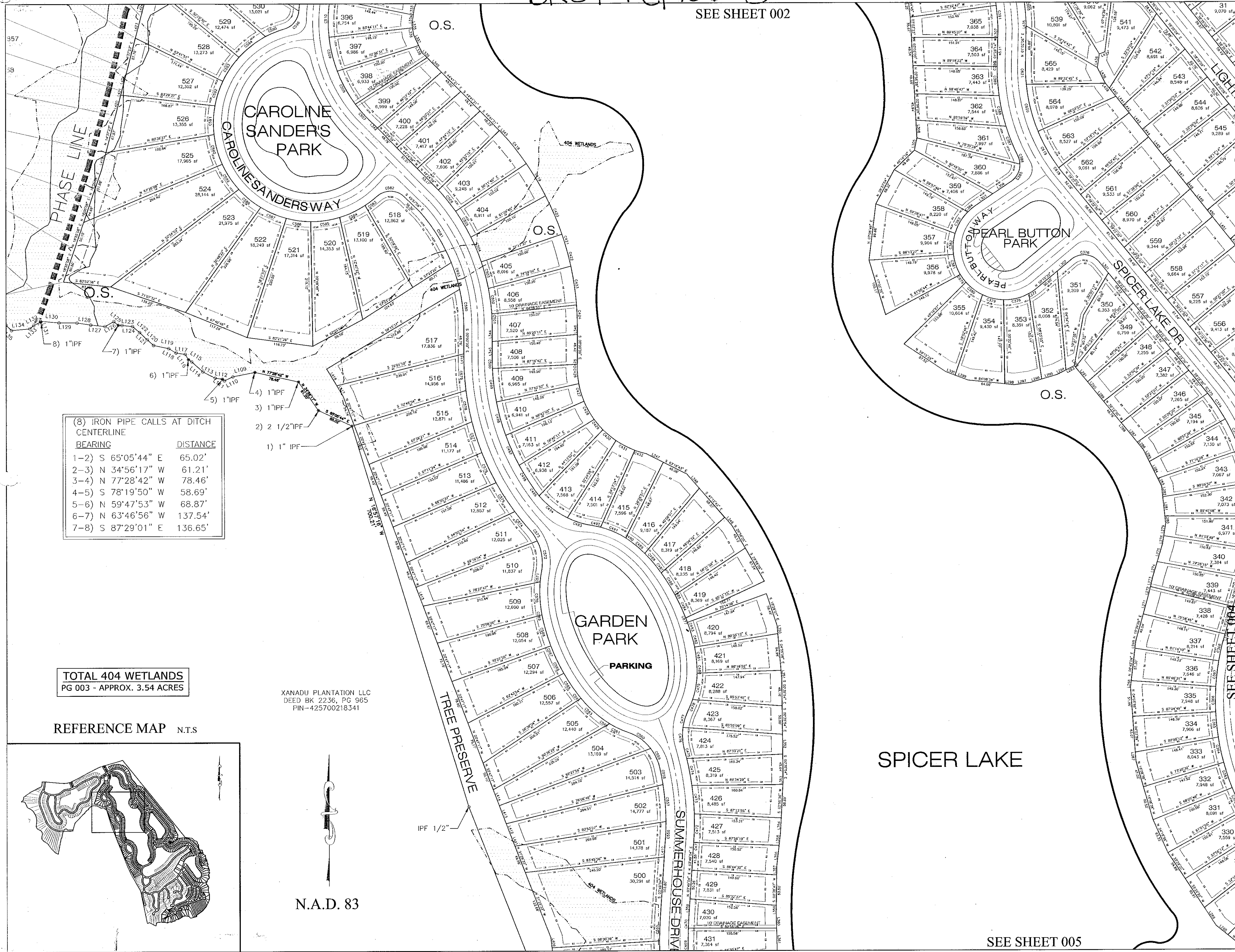


CAROLINA ENGINEERS
P.O. DRAWER 1578
NEW BERN, NC 28563
252.633.2424

SEE SHEET 004
SUMMERHOUSE ON
EVERETT BAY
HOLLY RIDGE, NORTH CAROLINA
FINAL PLAT - PHASE 1

PROJECT NO.:	CE-335
DATE:	06/13/06
SURVEYED BY:	B. HARRELL
DRAWN BY:	S. BAKER
CHECKED BY:	C. HUDDLE
APPROVED BY:	J. HUDDLE
SCALE:	1" = 100'
DRAWING NO.:	
SHEET	2 OF 14

002



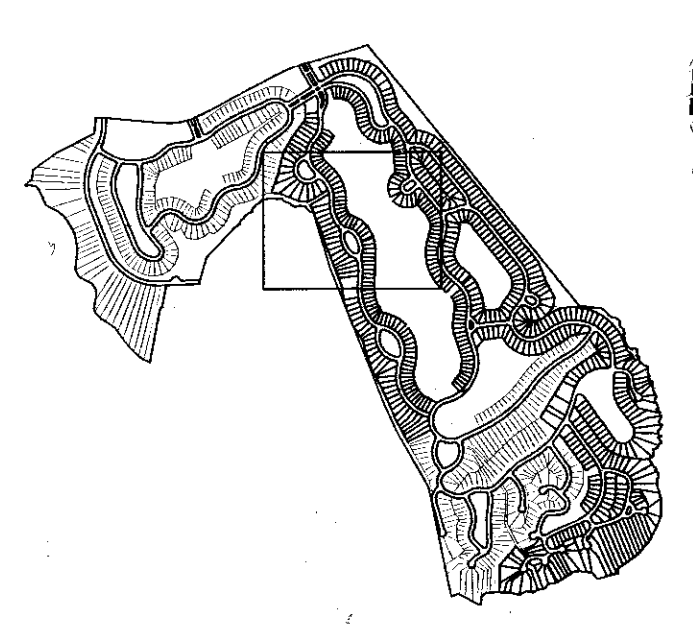
(8) IRON PIPE CALLS AT DITCH CENTERLINE

BEARING	DISTANCE
1-2) S 65°05'44" E	65.02'
2-3) N 34°56'17" W	61.21'
3-4) N 77°28'42" W	78.46'
4-5) S 78°19'50" W	58.69'
5-6) N 59°47'53" W	68.87'
6-7) N 63°46'56" W	137.54'
7-8) S 87°29'01" E	136.65'

TOTAL 404 WETLANDS
PG 003 - APPROX. 3.54 ACRES

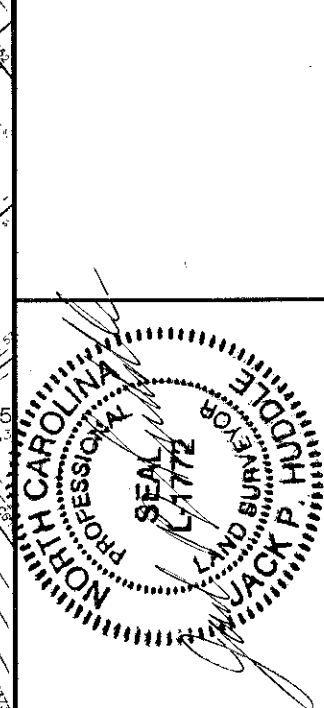
XANADU PLANTATION LLC
DEED BK 2236, PG 965
PIN-425700218341

REFERENCE MAP N.T.S.



N.A.D. 83

NO.	DESCRIPTION	DATE	APPROVED
1	REVISED LINE CLARITY AND SCALE	9/02/06	CCH



CAROLINA ENGINEERS
P.O. DRAWER 1578
NEW BERN, NC 28563
252.633.2424

SEE SHEET 004

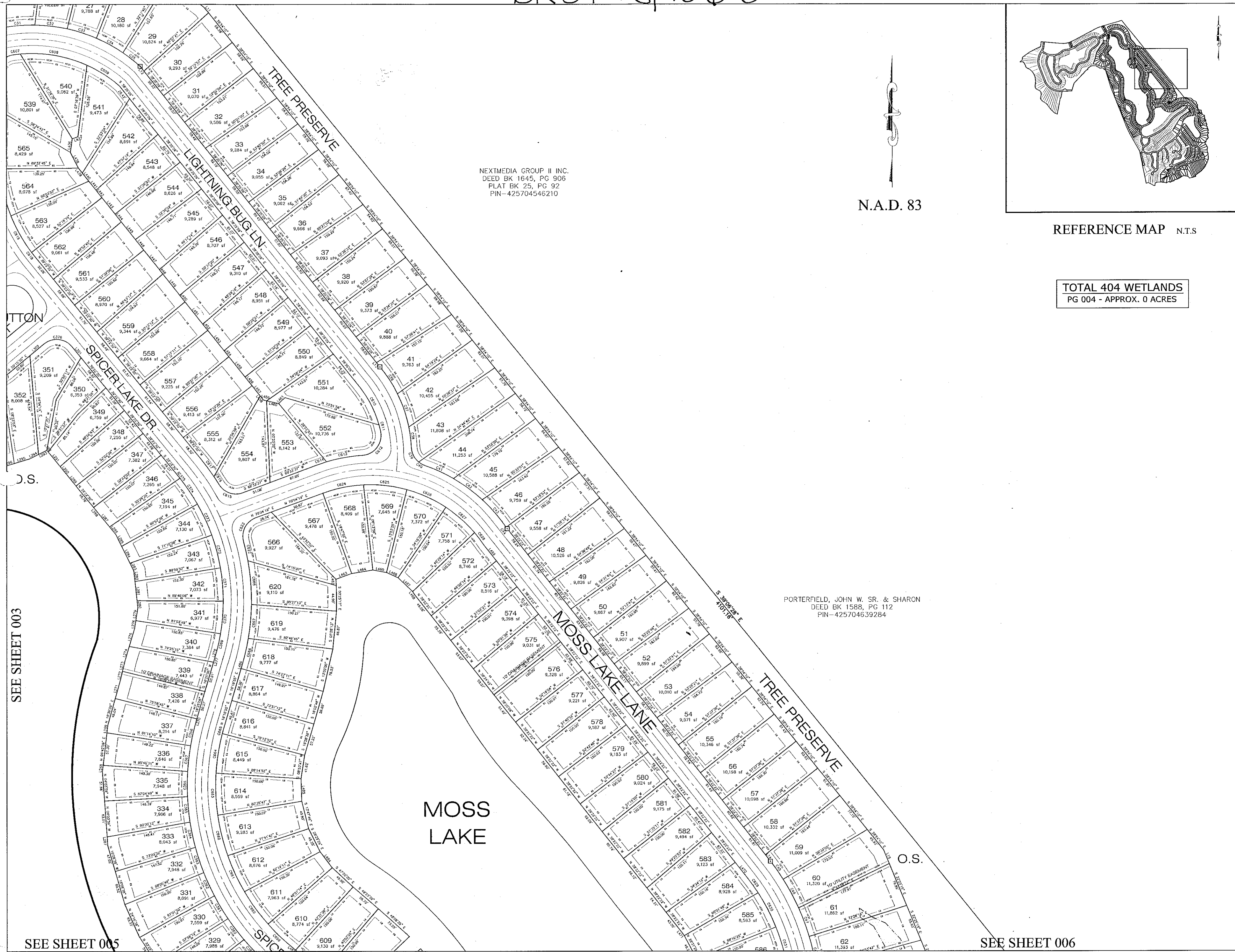
SUMMERHOUSE ON
EVERETT BAY

HOLLY RIDGE, NORTH CAROLINA

FINAL PLAT - PHASE 1

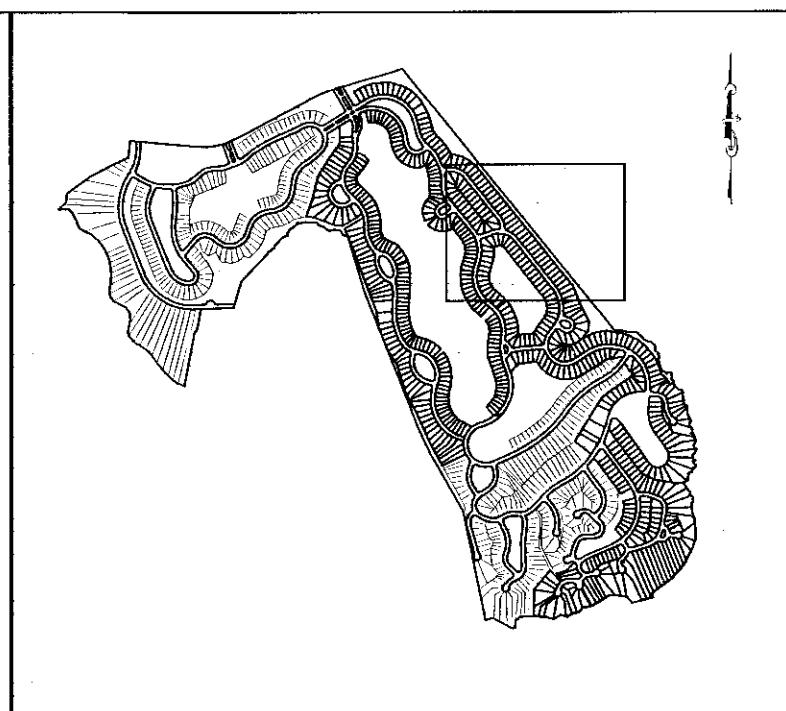
PROJECT NO.: CE-335
DATE: 06/13/06
SURVEYED BY: B. HARRELL
DRAWN BY: S. BAKER
CHECKED BY: C. HUDDLE
APPROVED BY: J. HUDDLE
SCALE: 1" = 100'
DRAWING NO.:
SHEET 3 OF 14

003



NEXTMEDIA GROUP II INC.
DEED BK 1645, PG 906
PLAT BK 25, PG 92
PIN-425704546210

N.A.D. 83

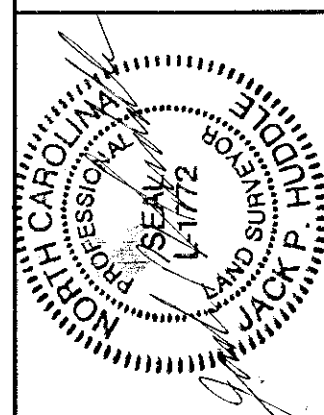


REFERENCE MAP N.T.S

TOTAL 404 WETLANDS
PG 004 - APPROX. 0 ACRES

NO.	DESCRIPTION	DATE	APPROVED
1	REVISED LINE CLARITY AND SCALE	8/02/06	CCH

REVISIONS



CAROLINA ENGINEERS
P.O. DRAWER 1578
NEW BERN, NC 28563
252.633.2424

SUMMERHOUSE ON
EVERETT BAY
HOLLY RIDGE, NORTH CAROLINA
FINAL PLAT - PHASE 1

PROJECT NO:	CE-335
DATE:	06/13/06
SURVEYED BY:	B. HARRELL
DRAWN BY:	S. BAKER
CHECKED BY:	C. HUDDLE
APPROVED BY:	J. HUDDLE
SCALE:	1" = 100'
DRAWING NO.:	
SHEET	4 OF 14

004

SEE SHEET 003

SEE SHEET 005

SEE SHEET 006

SEE SHEET 003

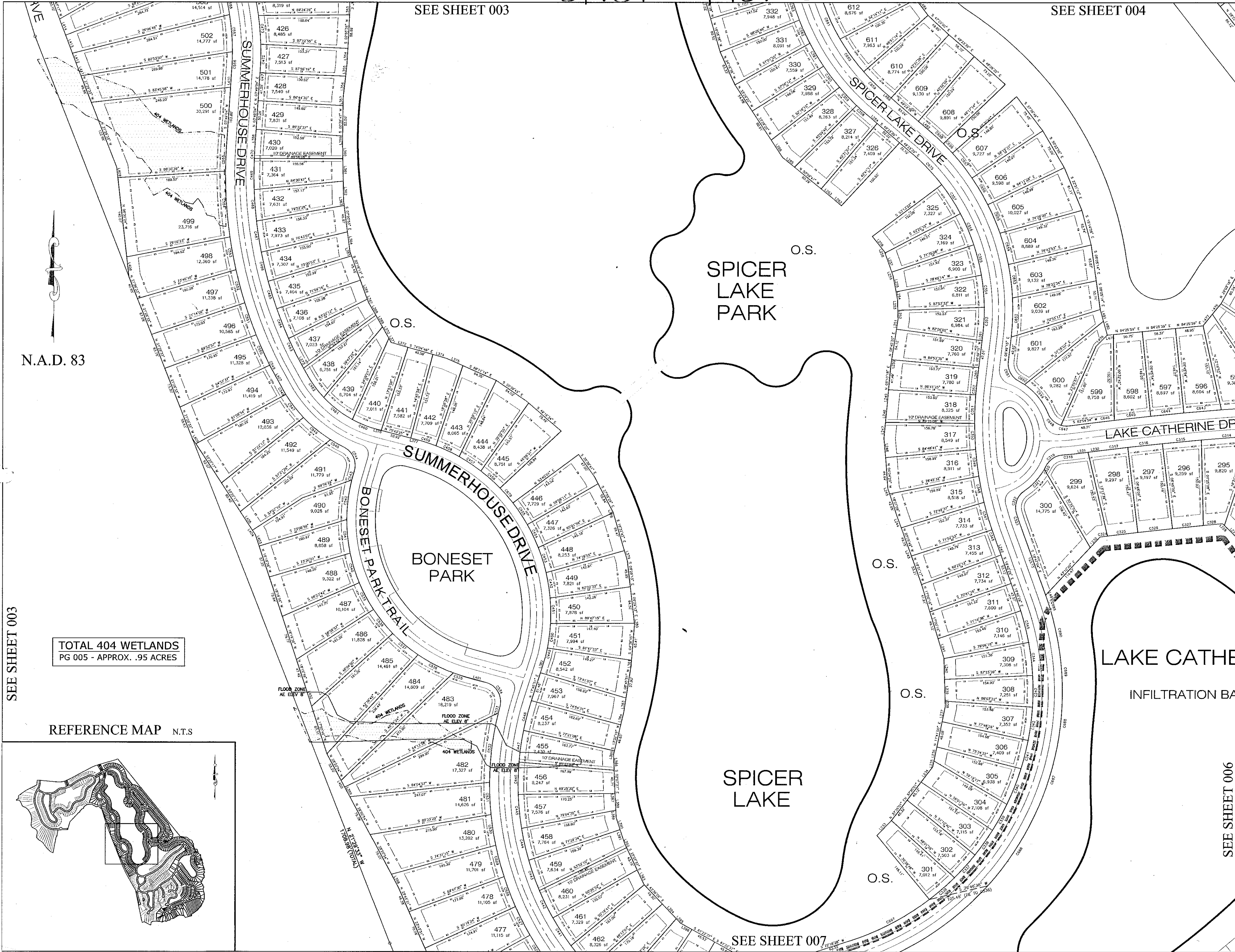
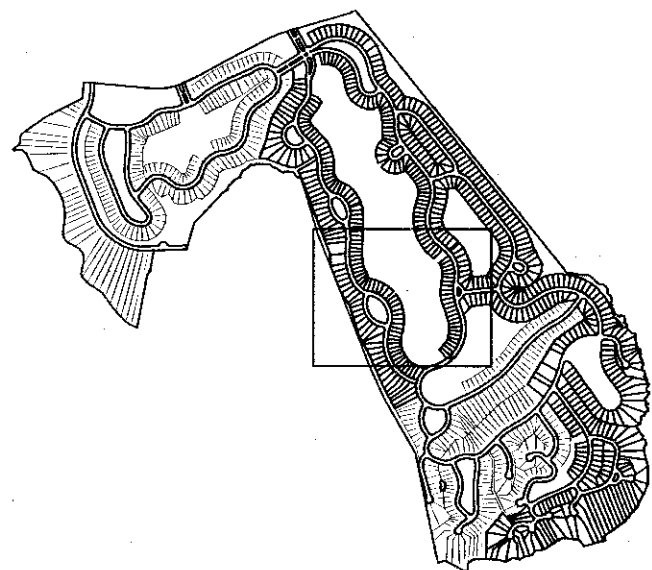
SEE SHEET 004

N.A.D. 83

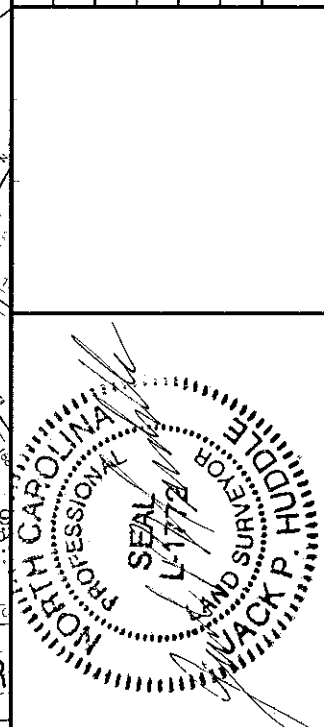
SEE SHEET 003

TOTAL 404 WETLANDS
PG 005 - APPROX. .95 ACRES

REFERENCE MAP N.T.S.



REVISIONS	
NO.	DESCRIPTION
1	REVISED LINE CLARITY AND SCALE
	DATE 8/02/06
	APPROVED CCH



CAROLINA ENGINEERS
 P.O. DRAWER 1578
 NEW BERN, NC 28563
 252.633.2424

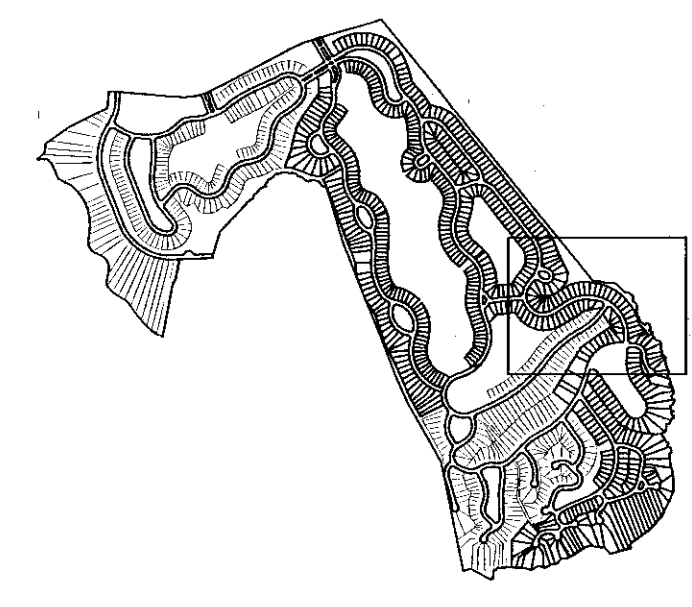
SUMMERHOUSE ON
 EVERETT BAY
 HOLLY RIDGE, NORTH CAROLINA
 FINAL PLAT - PHASE 1

PROJECT NO: CE-335
 DATE: 06/13/06
 SURVEYED BY: B. HARRELL
 DRAWN BY: S. BAKER
 CHECKED BY: C. HUDDLE
 APPROVED BY: J. HUDDLE
 SCALE: 1" = 100'
 DRAWING NO.:
 SHEET 5 OF 14

005

SEE SHEET 004

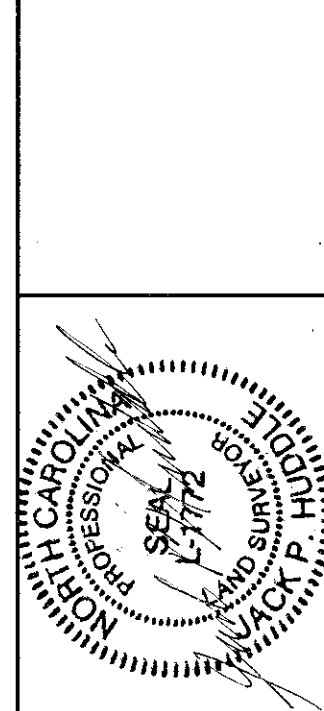
N.A.D. 83



REFERENCE MAP N.T.S.

TOTAL 404 WETLANDS
PG 006 - APPROX. 2.86 ACRES

NO.	DESCRIPTION	DATE	APPROVED
1	REVISED LINE CLARITY AND SCALE	8/02/06	CCH

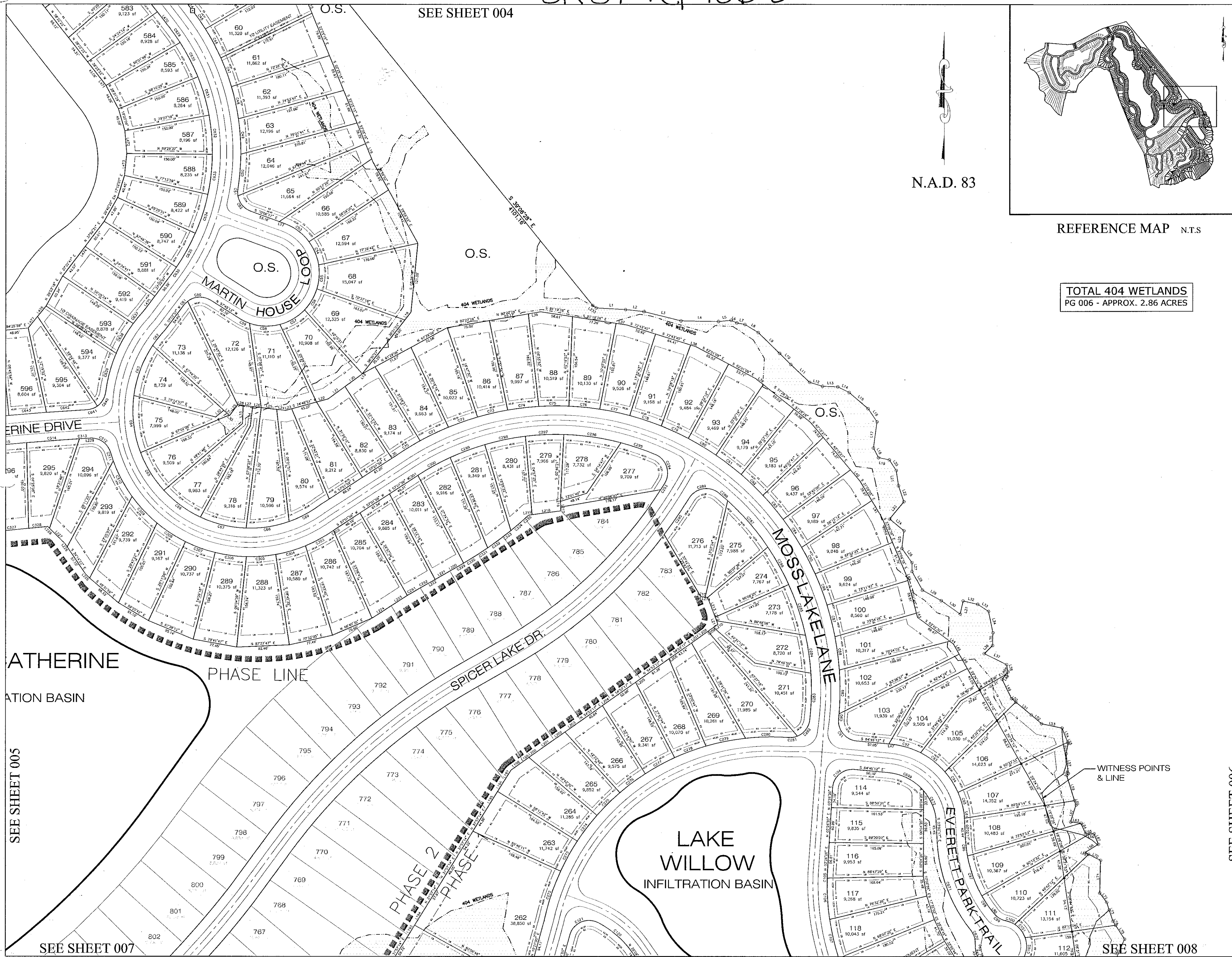


CAROLINA ENGINEERS
P.O. DRAWER 1578
NEW BERN, NC 28563
252.633.2424

SUMMERHOUSE ON
EVERETT BAY
HOLLY RIDGE, NORTH CAROLINA
FINAL PLAT - PHASE 1

PROJECT NO: CE-335
DATE: 06/13/06
SURVEYED BY: B. HARRELL
DRAWN BY: S. BAKER
CHECKED BY: C. HUDDLE
APPROVED BY: J. HUDDLE
SCALE: 1" = 100'
DRAWING NO.:
SHEET 6 OF 14

006



SEE SHEET 005

SEE SHEET 007

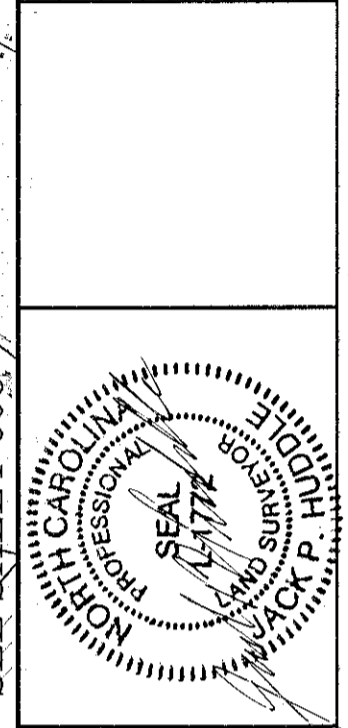
SEE SHEET 008

SEE SHEET 005

SEE SHEET 006



NO.	DESCRIPTION	DATE	APPROVED
1	REVISED LINE CLARITY AND SCALE	8/02/06	CCH



CAROLINA ENGINEERS
 P.O. DRAWER 1578
 NEW BERN, NC 28563
 252.633.2424

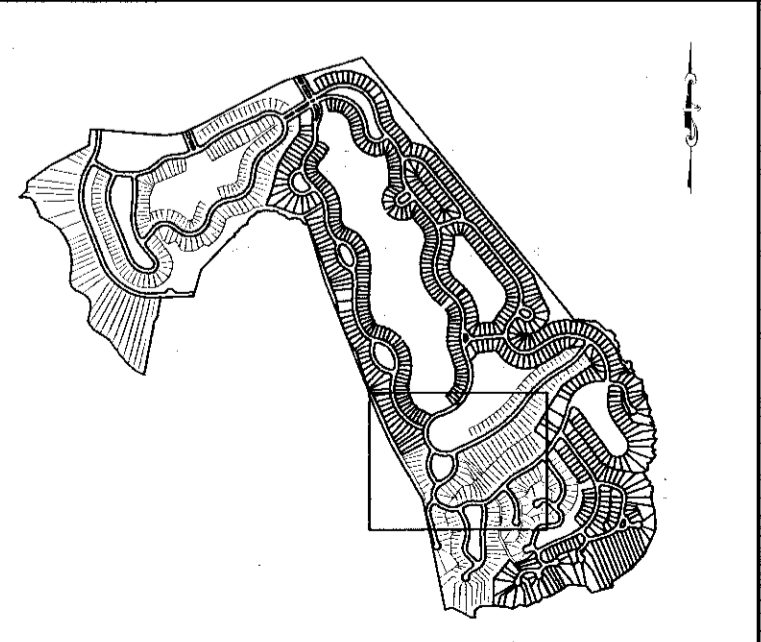
SUMMERHOUSE ON
 EVERETT BAY
 HOLLY RIDGE, NORTH CAROLINA
 FINAL PLAT - PHASE 1

PROJECT NO.:	CE-335
DATE:	06/13/06
SURVEYED BY:	B. HARRELL
DRAWN BY:	S. BAKER
CHECKED BY:	C. HUDDLE
APPROVED BY:	J. HUDDLE
SCALE:	1" = 100'
DRAWING NO.:	
SHEET	7 OF 14

007

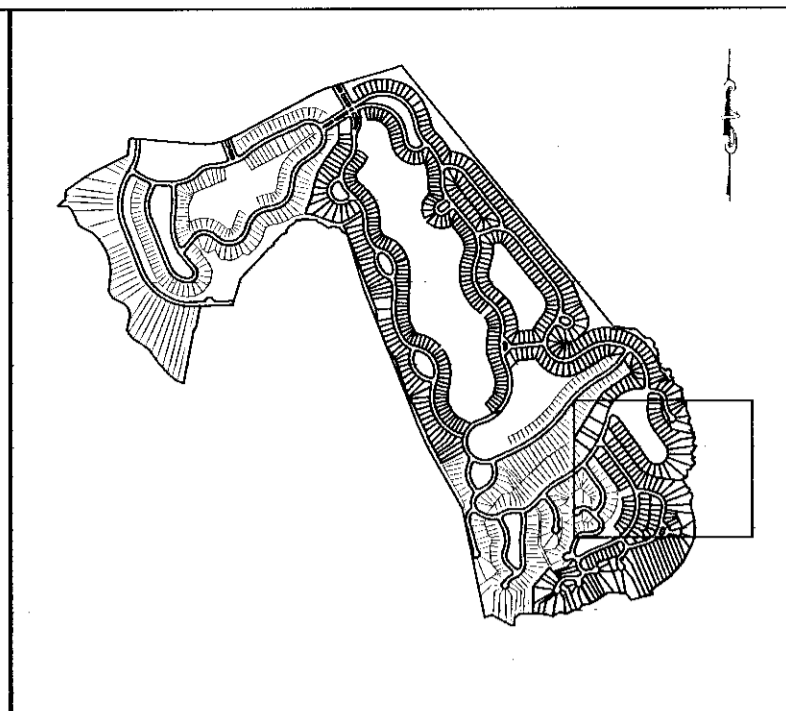
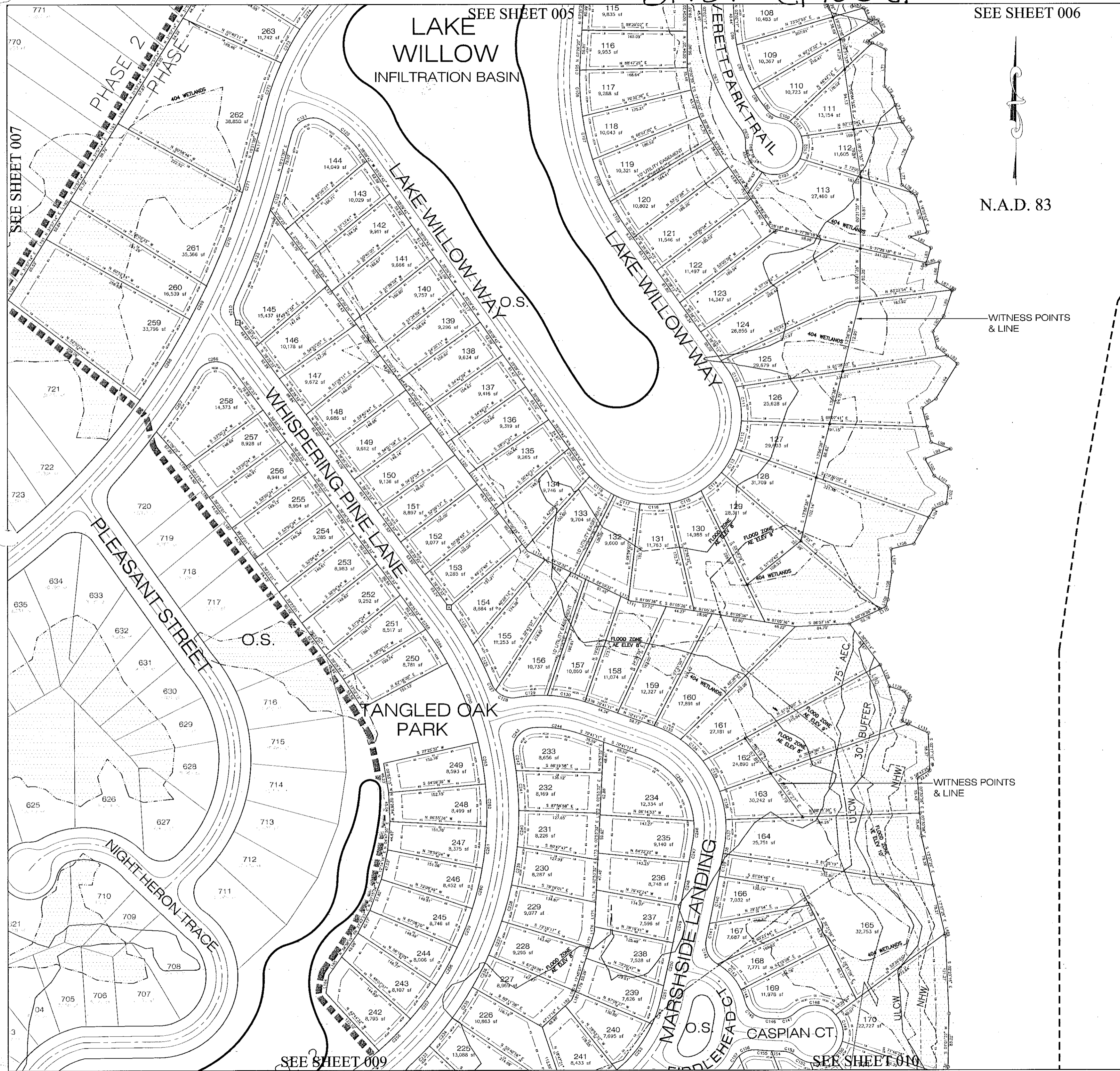
TOTAL 404 WETLANDS
PG 007 - APPROX. 10.62 ACRES

REFERENCE MAP N.T.S.



N.A.D. 83

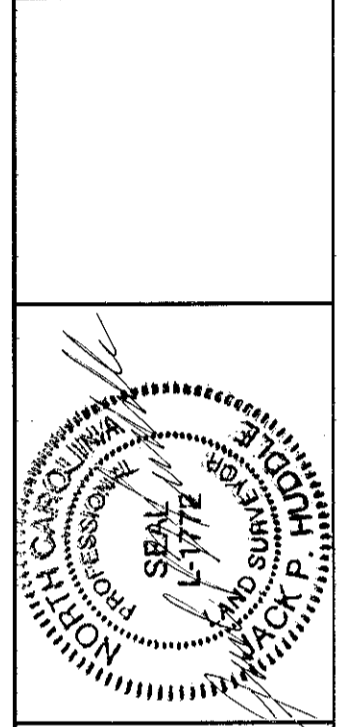
SEE SHEET 009



N.A.D. 83

TOTAL 404 WETLANDS
PG 008 - APPROX. 11.34 ACRES

NO.	DESCRIPTION	DATE	APPROVED
1	REVISED LINE CLARITY AND SCALE	8/02/06	CCH



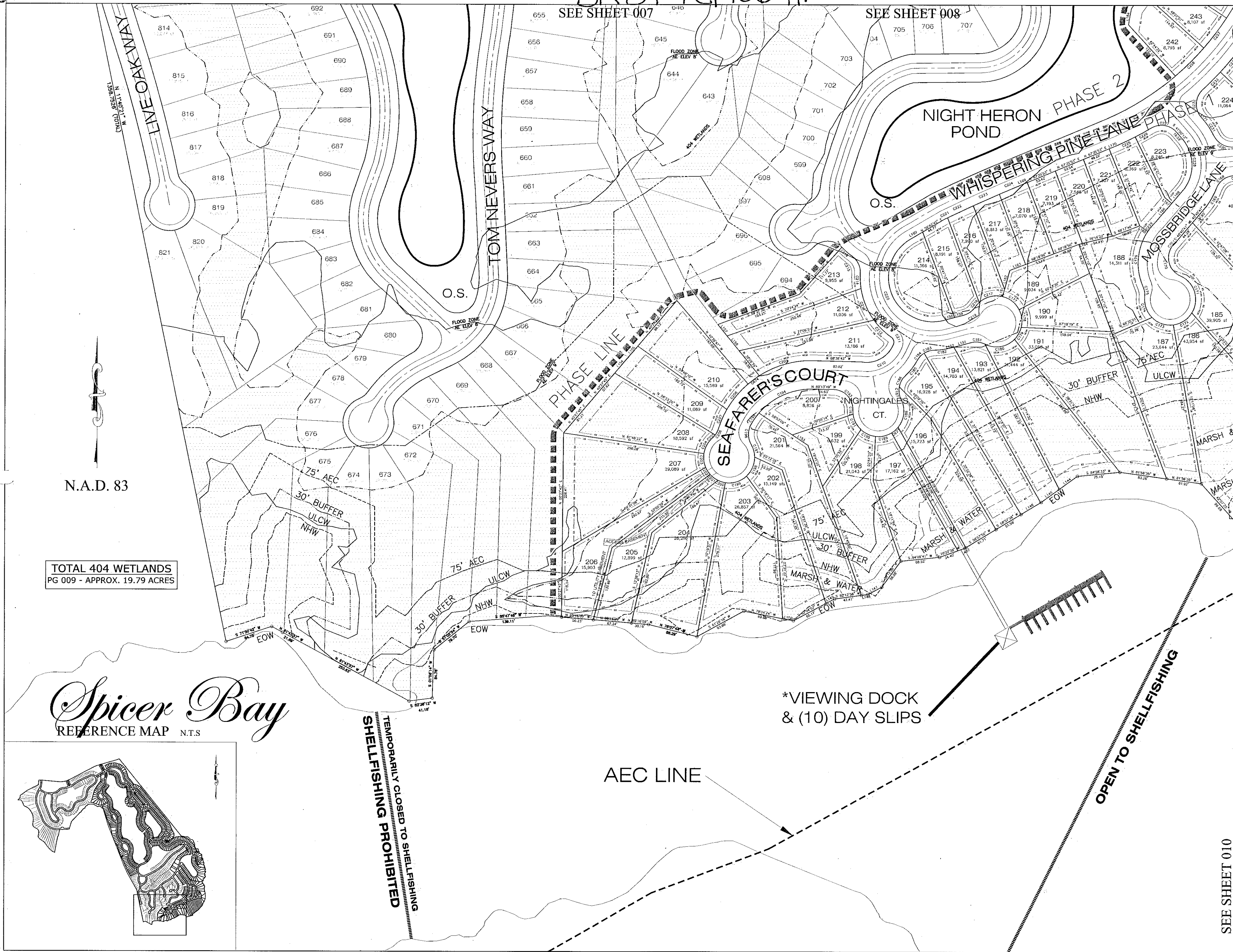
CAROLINA ENGINEERS
P.O. DRAWER 1578
NEW BERN, NC 28563
252.633.2424

SUMMERHOUSE ON
EVERETT BAY
HOLLY RIDGE, NORTH CAROLINA
FINAL PLAT - PHASE 1

PROJECT NO:	CE-335
DATE:	06/13/06
SURVEYED BY:	B. HARRELL
DRAWN BY:	S. BAKER
CHECKED BY:	C. HUDDLE
APPROVED BY:	J. HUDDLE
SCALE:	1" = 100'
DRAWING NO.:	008
SHEET	8 OF 14

SEE SHEET 007

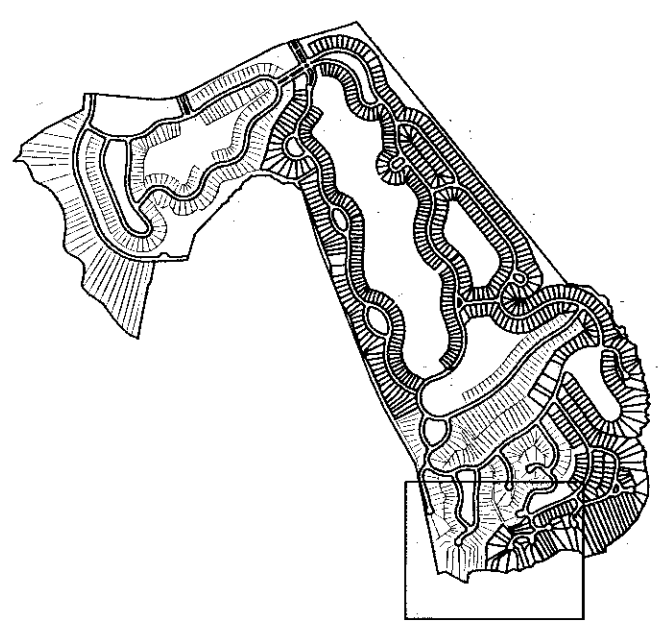
SEE SHEET 008



N.A.D. 83

TOTAL 404 WETLANDS
PG 009 - APPROX. 19.79 ACRES

Spicer Bay
REFERENCE MAP N.T.S



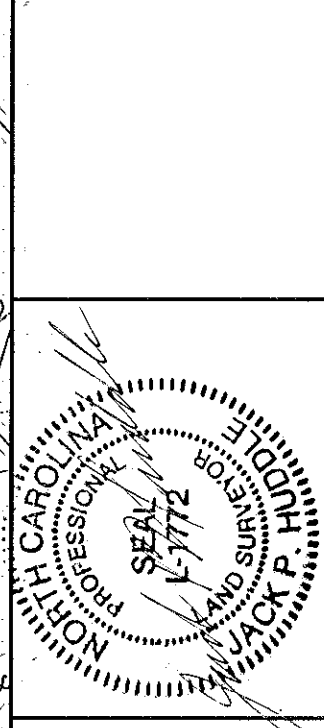
TEMPORARILY CLOSED TO SHELLFISHING
SHELLFISHING PROHIBITED

*VIEWING DOCK
& (10) DAY SLIPS

AEC LINE

OPEN TO SHELLFISHING

NO.	REVISION	CLARITY AND SCALE	DATE	APPROVED
1			8/02/06	CCH



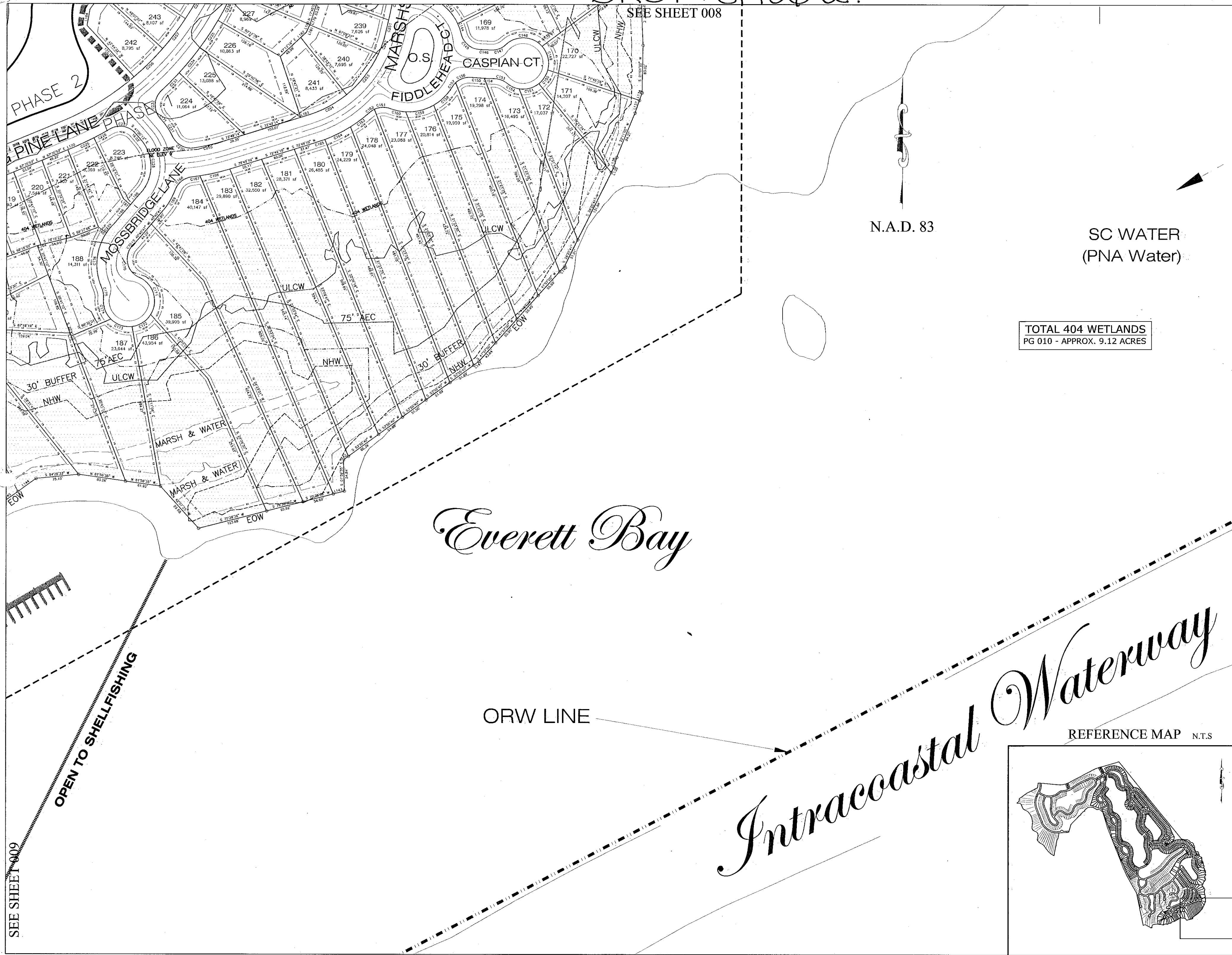
CAROLINA ENGINEERS
P.O. DRAWER 1578
NEW BERN, NC 28563
252.633.2424

SUMMERHOUSE ON
EVERETT BAY
HOLLY RIDGE, NORTH CAROLINA
FINAL PLAT - PHASE 1

PROJECT NO:	CE-335
DATE:	06/13/06
SURVEYED BY:	B. HARRELL
DRAWN BY:	S. BAKER
CHECKED BY:	C. HUDDLE
APPROVED BY:	J. HUDDLE
SCALE:	1" = 100'
DRAWING NO.:	
SHEET	9 OF 14

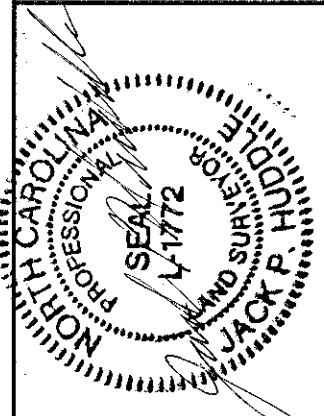
009

SEE SHEET 008



REVISIONS	
NO.	DATE
1	8/02/06
	CCH
	APPROVED

REVISED LINE CLARITY AND SCALE
DESCRIPTION

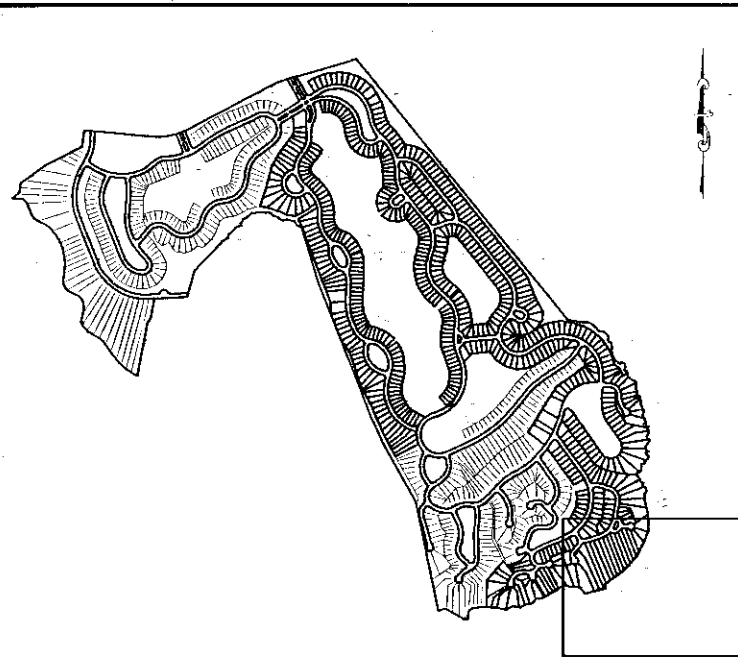


CAROLINA ENGINEERS
P.O. DRAWER 1578
NEW BERN, NC 28563
252.633.2424

SUMMERHOUSE ON
EVERETT BAY
HOLLY RIDGE, NORTH CAROLINA
FINAL PLAT - PHASE 1

PROJECT NO: CE-335
DATE: 06/13/06
SURVEYED BY: B. HARRELL
DRAWN BY: S. BAKER
CHECKED BY: C. HUDDLE
APPROVED BY: J. HUDDLE
SCALE: 1" = 100'
DRAWING NO.:
SHEET 10 OF 14

010



REFERENCE MAP N.T.S

SEE SHEET 009

BK 51 PG 106 J.

BOUNDARY LINE TABLES

Table with columns: LINE, BEARING, DISTANCE. Contains boundary data for lines L1 through L170.

Table with columns: LINE, BEARING, DISTANCE. Contains boundary data for lines L171 through L236.

Table with columns: LINE, BEARING, DISTANCE. Contains boundary data for lines L1 through L100.

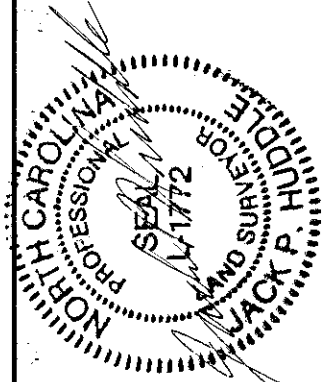
Table with columns: LINE, BEARING, DISTANCE. Contains boundary data for lines L101 through L200.

Table with columns: LINE, BEARING, DISTANCE. Contains boundary data for lines L201 through L300.

Table with columns: LINE, BEARING, DISTANCE. Contains boundary data for lines L301 through L400.

Table with columns: LINE, BEARING, DISTANCE. Contains boundary data for lines L401 through L500.

Table with columns: LINE, BEARING, DISTANCE. Contains boundary data for lines L501 through L600.



CAROLINA ENGINEERS
P.O. DRAWER 1578
NEW BERN, NC 28563
252.633.2424

SUMMERHOUSE ON
EVERETT BAY
HOLLY RIDGE, NORTH CAROLINA
FINAL PLAT - PHASE 1

PROJECT NO.: CE-335
DATE: 06/13/06
SURVEYED BY: B. HARRELL
DRAWN BY: S. BAKER
CHECKED BY: C. HUDDLE
APPROVED BY: J. HUDDLE
SCALE: 1" = 100'
DRAWING NO.:
SHEET 11 OF 14

BK 51 PG 106 K.

Table with 5 columns: CURVE, RADIUS, ARC LENGTH, CHORD LENGTH, CHORD BEARING, DELTA ANGLE. Contains data for curves C1 through C100.

Table with 5 columns: CURVE, RADIUS, ARC LENGTH, CHORD LENGTH, CHORD BEARING, DELTA ANGLE. Contains data for curves C101 through C200.

Table with 5 columns: CURVE, RADIUS, ARC LENGTH, CHORD LENGTH, CHORD BEARING, DELTA ANGLE. Contains data for curves C201 through C300.

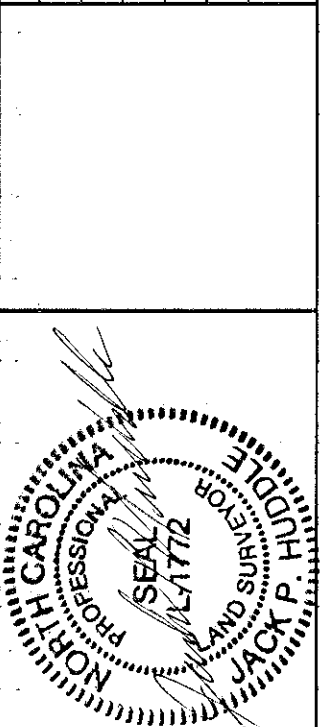
Project information block including: PROJECT NO.: CE-335, DATE: 06/13/06, SURVEYED BY: B. HARRELL, DRAWN BY: S. BAKER, CHECKED BY: J. HUDDLE, APPROVED BY: C. HUDDLE, SCALE: 1" = 100', DRAWING NO.: SHEET 12 OF 14, and a circular seal for Carolina Engineers.

SUMMERHOUSE ON EVERETT BAY HOLLY RIDGE, NORTH CAROLINA FINAL PLAT - PHASE 1

Table with 6 columns: CURVE, RADIUS, ARC LENGTH, CHORD LENGTH, CHORD BEARING, DELTA ANGLE. Contains data for curves C301 through C400.

Table with 6 columns: CURVE, RADIUS, ARC LENGTH, CHORD LENGTH, CHORD BEARING, DELTA ANGLE. Contains data for curves C401 through C500.

Table with 3 columns: NO., DESCRIPTION, REVISIONS. Includes a row for 'REVISED LINE CLARITY AND SCALE'.



CAROLINA ENGINEERS
P.O. DRAWER 1578
NEW BERN, NC 28563
252.633.2424

SUMMERHOUSE ON
EVERETT BAY
HOLLY RIDGE, NORTH CAROLINA
FINAL PLAT - PHASE 1

PROJECT NO: CE-335
DATE: 06/13/06
SURVEYED BY: B. HARRELL
DRAWN BY: S. BAKER
CHECKED BY: C. HUDDLE
APPROVED BY: J. HUDDLE
SCALE: 1" = 100'
DRAWING NO.:
SHEET 13 OF 14

CURVE	RADIUS	ARC LENGTH	CHORD LENGTH	CHORD BEARING	DELTA ANGLE
C501	356.16'	23.32'	23.32'	N 01°52'33" W	03°45'06"
C502	356.16'	45.13'	45.10'	N 07°22'55" W	07°15'39"
C503	356.16'	48.45'	48.41'	N 14°54'33" W	07°47'38"
C504	356.16'	47.16'	47.13'	N 22°36'00" W	07°35'14"
C505	356.16'	52.91'	52.86'	N 30°38'57" W	08°30'40"
C506	356.16'	42.28'	42.26'	N 38°18'21" W	06°48'09"
C507	243.59'	52.37'	52.27'	S 42°35'31" E	12°19'04"
C508	243.59'	66.62'	66.41'	S 28°35'55" E	15°40'08"
C509	243.59'	61.37'	61.21'	S 13°32'47" E	14°26'07"
C510	243.59'	68.24'	68.01'	S 01°41'46" W	16°02'59"
C511	243.59'	59.98'	59.83'	S 16°46'29" W	14°06'27"
C512	243.59'	28.64'	28.62'	S 27°11'46" W	06°44'07"
C513	277.07'	41.87'	41.83'	N 34°01'45" E	08°39'29"
C514	277.07'	46.24'	46.19'	N 24°55'09" E	09°33'45"
C515	277.07'	45.32'	45.27'	N 15°27'07" E	09°22'18"
C516	274.70'	64.10'	63.95'	S 17°11'15" E	13°22'09"
C517	274.70'	70.86'	70.66'	S 03°06'47" E	14°46'47"
C518	274.70'	18.47'	18.46'	S 06°12'09" W	03°51'05"
C519	1.00'	1.48'	1.35'	N 34°09'58" W	84°35'19"
C520	523.10'	48.72'	48.70'	S 70°41'13" E	05°20'11"
C521	523.10'	63.90'	63.86'	S 64°31'09" E	06°59'57"
C522	523.10'	57.69'	57.66'	S 57°51'36" E	06°19'10"
C523	523.10'	57.94'	57.91'	S 51°31'38" E	06°20'46"
C524	523.10'	54.95'	54.92'	S 45°20'41" E	06°01'08"
C525	523.10'	54.94'	54.92'	S 39°19'36" E	06°01'04"
C526	523.10'	55.23'	55.21'	S 33°17'34" E	06°02'59"
C527	523.10'	56.10'	56.08'	S 27°11'44" E	06°08'42"
C528	523.10'	56.33'	56.31'	S 21°02'16" E	06°10'13"
C529	523.10'	56.55'	56.53'	S 14°51'19" E	06°11'40"
C530	523.10'	54.77'	54.75'	S 08°45'30" E	05°59'59"
C531	523.10'	56.54'	56.51'	S 02°39'44" E	06°11'35"
C532	523.10'	122.97'	122.68'	S 07°10'08" W	13°28'08"
C533	523.10'	10.90'	10.90'	S 14°30'00" W	01°11'37"
C534	35.00'	55.00'	49.51'	N 29°55'10" W	90°01'56"
C535	285.70'	24.80'	24.79'	S 72°26'55" E	04°58'27"
C536	285.70'	70.00'	69.83'	S 62°56'32" E	14°02'19"
C537	285.70'	58.22'	58.12'	S 50°05'06" E	11°40'33"
C538	285.70'	54.02'	53.94'	S 38°49'49" E	10°50'02"
C539	285.70'	53.32'	53.24'	S 28°04'00" E	10°41'36"
C540	285.70'	54.42'	54.33'	S 17°15'49" E	10°54'46"
C541	285.70'	59.33'	59.22'	S 05°51'28" E	11°53'55"
C542	285.70'	70.14'	69.96'	S 07°07'28" W	14°03'57"
C543	285.70'	16.04'	16.04'	S 15°45'56" W	03°12'59"
C544	35.00'	49.75'	45.67'	N 23°21'00" W	81°26'51"
C545	248.08'	27.44'	27.42'	S 60°54'20" E	06°20'11"
C546	248.08'	61.59'	61.43'	S 50°37'29" E	14°13'30"
C547	248.08'	51.21'	51.12'	S 37°35'55" E	11°49'38"
C548	248.08'	12.00'	12.00'	S 30°17'59" E	02°46'16"
C549	752.75'	6.42'	6.42'	S 26°36'03" E	00°29'18"
C550	752.75'	58.51'	58.50'	S 24°07'47" E	04°27'13"
C551	752.75'	59.67'	59.66'	S 19°37'55" E	04°32'31"
C552	752.75'	60.09'	60.07'	S 15°04'27" E	04°34'24"
C553	752.75'	58.39'	58.37'	S 10°33'56" E	04°26'39"
C554	752.75'	116.15'	116.03'	S 03°55'23" E	08°50'26"
C555	752.75'	43.63'	43.62'	S 02°09'27" W	03°19'14"
C556	425.99'	40.53'	40.51'	N 02°32'57" E	05°27'05"
C557	425.99'	65.25'	65.19'	N 04°33'52" W	08°46'34"
C558	425.99'	30.80'	30.79'	N 11°01'25" W	04°08'32"
C559	86.00'	36.95'	36.86'	N 25°24'07" W	24°36'52"
C560	86.00'	50.96'	50.22'	N 54°41'09" W	33°57'12"
C561	148.64'	34.60'	34.52'	S 64°59'30" E	13°19'59"
C562	148.64'	12.49'	12.49'	S 55°54'47" E	04°48'53"
C563	225.65'	55.24'	55.11'	S 46°29'23" E	14°01'38"
C564	225.65'	7.54'	7.54'	S 38°31'02" E	01°54'56"
C565	335.65'	45.68'	45.64'	S 33°39'33" E	07°47'51"
C566	335.60'	29.29'	29.28'	S 27°15'31" E	05°00'00"
C567	335.59'	24.00'	24.00'	S 22°42'30" E	04°05'51"
C568	335.50'	50.97'	50.92'	S 16°18'31" E	08°42'14"
C569	225.25'	5.94'	5.94'	S 11°12'06" E	01°30'35"
C570	225.60'	56.85'	56.70'	S 03°13'50" E	14°28'16"
C571	148.63'	17.15'	17.14'	S 07°52'41" W	06°36'33"
C572	86.00'	56.24'	55.24'	N 07°33'01" W	37°28'04"
C573	86.00'	19.97'	19.92'	N 32°56'11" W	13°18'14"
C574	451.30'	45.32'	45.30'	S 39°25'51" E	05°45'12"
C575	451.30'	60.40'	60.36'	N 32°43'11" W	07°40'07"
C576	451.30'	58.63'	58.59'	N 25°09'49" W	07°26'38"
C577	451.30'	57.08'	57.04'	N 17°49'06" W	07°14'47"
C578	451.30'	55.99'	55.95'	N 10°38'28" W	07°06'29"
C579	451.30'	50.68'	50.65'	S 03°52'13" E	06°26'01"
C580	306.16'	66.97'	66.83'	N 06°15'58" W	12°31'56"
C581	306.16'	104.57'	104.06'	N 31°35'21" W	19°34'07"
C582	35.00'	52.55'	47.75'	N 88°57'40" W	86°01'09"
C583	172.55'	26.71'	26.68'	N 52°27'48" E	08°52'05"
C584	172.55'	49.63'	49.46'	N 65°08'13" E	16°28'45"
C585	172.55'	51.47'	51.28'	N 81°55'17" E	17°05'23"
C586	172.55'	43.53'	43.41'	S 82°18'24" E	14°27'14"
C587	172.55'	49.13'	48.96'	S 66°55'23" E	16°18'49"
C588	172.55'	50.29'	50.11'	S 50°24'59" E	16°42'00"
C589	172.55'	52.96'	52.76'	S 33°16'22" E	17°35'14"
C590	172.55'	54.52'	54.30'	S 15°25'36" E	18°06'17"
C591	172.55'	50.97'	50.79'	S 02°05'20" W	16°55'35"
C592	172.55'	45.16'	45.04'	S 18°03'03" W	14°59'50"
C593	172.55'	50.87'	50.69'	S 33°59'45" W	16°53'34"
C594	172.55'	59.45'	59.16'	S 52°18'44" W	19°44'25"
C595	172.55'	36.23'	36.17'	S 88°11'53" W	12°01'52"
C596	35.00'	42.83'	40.20'	N 39°09'36" E	70°06'26"
C597	278.29'	65.09'	64.94'	S 10°37'22" W	13°24'01"
C598	278.29'	60.14'	60.02'	S 23°30'50" W	12°22'55"
C599	404.69'	26.98'	26.98'	S 35°06'28" W	03°49'12"
C600	227.19'	71.81'	71.51'	N 29°26'18" E	18°06'36"

CURVE	RADIUS	ARC LENGTH	CHORD LENGTH	CHORD BEARING	DELTA ANGLE
C601	227.19'	76.74'	76.38'	N 10°42'23" E	19°21'13"
C602	329.53'	21.87'	21.86'	N 01°47'39" W	03°48'07"
C603	329.53'	32.76'	32.75'	N 06°32'36" W	05°41'46"
C604	334.99'	28.74'	28.73'	S 08°10'26" E	04°54'55"
C605	579.77'	53.45'	53.43'	N 05°44'11" W	05°16'55"
C606	35.00'	55.13'	49.60'	S 36°44'37" W	90°14'31"
C607	235.37'	12.51'	12.51'	S 83°23'15" W	03°02'45"
C608	235.37'	120.63'	119.32'	N 80°24'24" W	29°21'56"
C609	235.37'	68.40'	68.16'	N 57°23'57" W	16°39'00"
C610	191.15'	79.64'	79.07'	N 27°43'26" W	23°52'18"
C611	191.15'	11.41'	11.41'	N 14°04'40" W	03°25'15"
C612	35.00'	60.32'	53.13'	N 37°00'22" E	98°44'49"
C613	282.11'	64.57'	64.43'	S 79°49'21" W	13°06'51"
C614	282.11'	18.24'	18.24'	S 71°24'46" W	03°42'18"
C615	35.00'	48.34'	44.59'	S 70°52'08" E	79°08'30"
C616	394.69'	16.44'	16.44'	N 32°29'27" W	02°23'09"
C617	394.69'	39.20'	39.19'	N 36°31'46" W	05°41'28"
C618	293.42'	8.97'	8.97'	S 37°28'25" E	01°45'06"
C619	293.42'	73.85'	73.65'	S 29°23'16" E	14°25'12"
C620	293.42'	85.49'	85.19'	S 13°49'50" E	16°41'39"
C621	293.42'	35.61'	35.59'	S 02°00'24" E	06°57'14"
C622	393.72'	34.44'	34.43'	N 12°47'55" W	05°00'43"
C623	35.00'	52.15'	47.46'	S 27°23'01" W	85°22'36"
C624	241.42'	71.81'	71.54'	S 78°35'34" W	17°02'30"
C625	241.42'	77.23'	76.90'	N 83°43'18" W	18°19'45"
C626	241.42'	75.76'	75.45'	N 65°34'03" W	17°58'44"
C627	241.42'	67.44'	67.22'	N 48°34'30" W	16°00'18"
C628	241.42'	28.57'	28.56'	N 37°10'55" W	06°46'51"
C629	353.34'	30.25'	30.24'	N 35°20'51" W	04°54'18"
C630	353.34'	67.67'	67.57'	N 27°24'30" W	10°58'23"
C631	353.34'	69.69'	69.57'	N 16°16'19" W	11°18'00"
C632	353.34'	68.93'	68.82'	N 05°01'59" W	11°10'40"
C633	353.34'	70.79'	70.67'	N 06°17'42" E	11°28'44"
C634	353.34'	71.41'	71.29'	N 17°49'28" E	11°34'47"
C635	353.34'	68.03'	67.92'	N 29°07'47" E	11°01'51"
C636	353.34'	13.00'	13.00'	N 35°41'57" E	02°06'29"
C637	255.51'	27.71'	27.69'	S 39°45'02" W	06°12'48"
C638	255.51'	60.42'	60.28'	S 29°52'12" W	13°32'53"
C639	255.51'	69.85'	69.63'	S 15°15'52" W	15°39'48"
C640	35.00'	29.72'	28.84'	S 30°17'52" W	48°37'56"
C641	35.00'	19.57'	19.31'	N 70°37'21" E	32°01'02"
C642	4331.94'	69.33'	69.33'	S 86°10'52" W	00°55'01"
C643	4331.94'	66.25'	66.24'	S 85°17'04" W	00°52'34"
C644	4331.94'	58.37'	58.37'	S 84°27'37" W	00°46'19"
C645	4331.94'	64.45'	64.45'	S 83°38'53" W	00°51'09"
C646	4331.94'	26.85'	26.85'	S 83°02'39" W	00°21'19"
C647	35.00'	13.41'	13.32'	S 84°56'36" E	21°56'43"
C648	35.00'	31.70'	30.63'	S 48°01'18" E	51°53'53"
C649	112.50'	66.55'	65.58'	N 39°01'09" W	33°53'35"
C650	112.50'	11.92'	11.91'	N 59°00'03" W	06°04'12"
C651	35.00'	42.06'	39.58'	S 27°36'27" E	68°51'24"
C652	408.76'	67.52'	67.44'	N 01°44'15" E	09°27'49"
C653	408.76'	59.21'	59.16'	N 07°08'39" W	08°17'59"
C654	408.76'	56.88'	56.84'	N 15°16'50" W	07°58'23"
C655	408.76'	54.45'	54.41'	N 23°04'58" W	07°37'54"
C656	408.76'	54.52'	54.48'	N 30°43'10" W	07°38'29"
C657	408.76'	55.52'	55.48'	N 38°25'53" W	07°46'56"
C658	408.76'	27.41'	27.41'	N 47°28'23" W	03°50'32"
C659	365.84'	59.40'	59.33'	S 46°12'07" E	09°18'09"
C660	365.84'	70.59'	70.48'	S 36°01'21" E	11°03'21"
C661	365.84'	69.87'	69.76'	S 25°01'25" E	10°56'31"
C662	365.84'	73.21'	73.09'	S 13°49'11" E	11°27'58"
C663	365.84'	74.12'	74.00'	S 02°16'56" E	11°36'31"
C664	365.84'	70.58'	70.47'	S 09°02'57" W	11°03'14"
C665	365.84'	11.10'	11.10'	S 15°26'44" W	01°44'21"
C666	393.72'	43.82'	43.80'	N 12°52'48" E	06°22'37"
C667	393.72'	60.05'	59.99'	N 05°19'19" E	08°44