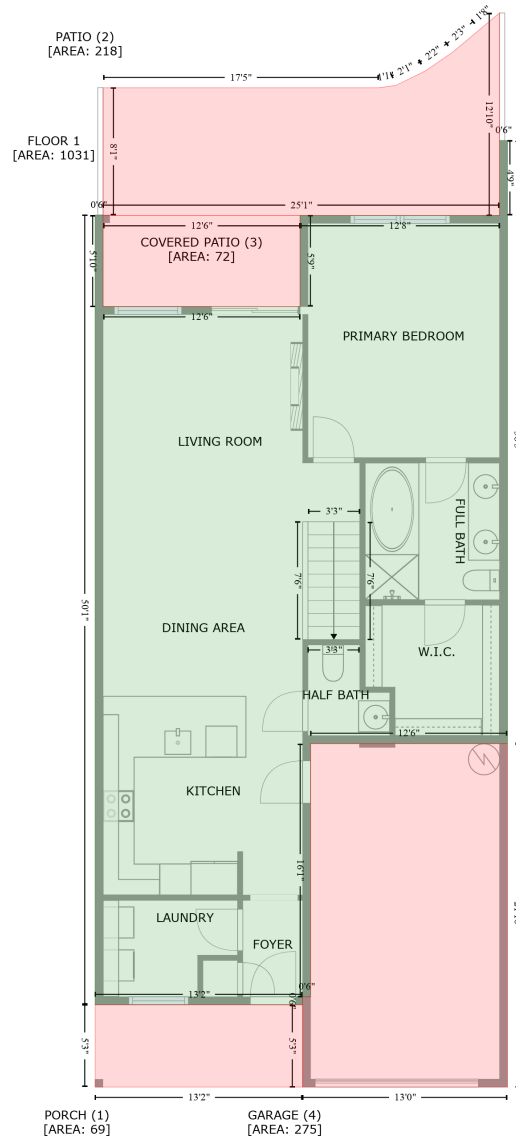


8840 Radcliff Drive Northwest, Thomasboro, Calabash, Brunswick County, North Carolina, United States, 28467

Gross Living Area: 1798 sq. ft

Level 1



Space	Area (sq. ft)	Calculation
FLOOR 1 (Living area)	1031	Coordinate Polygon Area Algorithm using inches $-((417.3 + 417.3) * (152.6 - 611.7) + (417.3 + 267.6) * (611.7 - 611.7) + (267.6 + 267.6) * (611.7 - 804.5) + (267.6 + 261.6) * (804.5 - 804.5) + (261.6 + 261.6) * (804.5 - 810.5) + (261.6 + 103.8) * (810.5 - 810.5) + (103.8 + 103.8) * (810.5 - 209.3) + (103.8 + 109.8) * (209.3 - 209.3) + (109.8 + 109.8) * (209.3 - 279) + (109.8 + 259.7) * (279 - 279) + (259.7 + 259.7) * (279 - 209.7) + (259.7 + 411.3) * (209.7 - 209.7) + (411.3 + 411.3) * (209.7 - 152.6) + (411.3 + 417.3) * (152.6 - 152.6)) * 0.5 * 0.00694$

8840 Radcliff Drive Northwest, Thomasboro, Calabash, Brunswick County, North Carolina, United States, 28467

Gross Living Area: 1798 sq. ft

Level 1

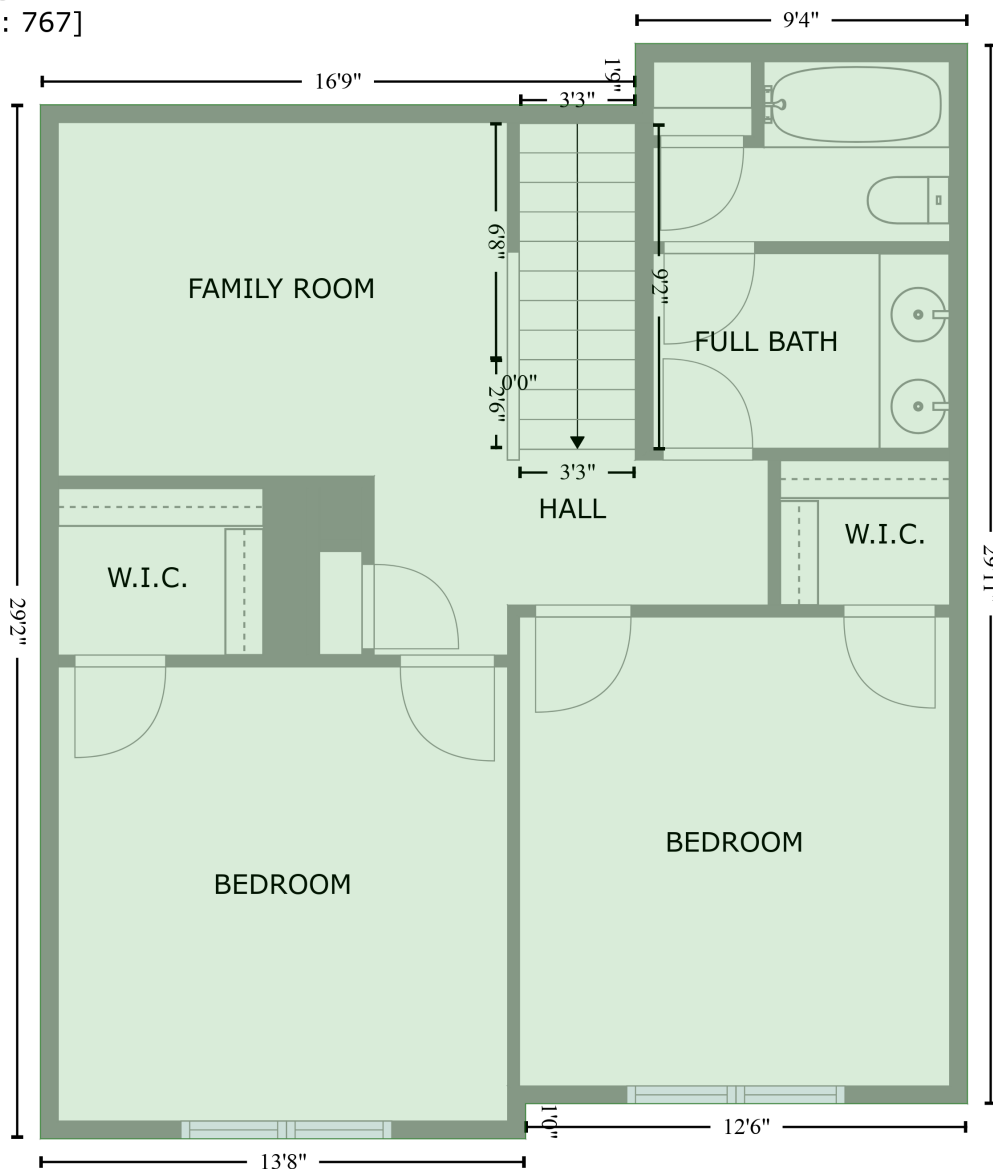
Space	Area (sq. ft)	Calculation <small>Coordinate Polygon Area Algorithm using inches</small>
PORCH (Non-living area)	69	$-\left((261.6 + 261.6) * (810.5 - 873.2) + (261.6 + 103.8) * (873.2 - 873.2) + (103.8 + 103.8) * (873.2 - 810.5) + (103.8 + 261.6) * (810.5 - 810.5)\right) * 0.5 * 0.00694$
PATIO (Non-living area)	218	$-\left((411.3 + 411.3) * (55.4 - 209.7) + (411.3 + 109.8) * (209.7 - 209.7) + (109.8 + 109.8) * (209.7 - 112.5) + (109.8 + 319.3) * (112.5 - 112.5) + (319.3 + 332.4) * (112.5 - 110.7) + (332.4 + 354.6) * (110.7 - 99.8) + (354.6 + 375.7) * (99.8 - 85.3) + (375.7 + 396.4) * (85.3 - 68) + (396.4 + 411.3) * (68 - 55.4)\right) * 0.5 * 0.00694$
COVERED PATIO (Non-living area)	72	$-\left((259.7 + 259.7) * (209.7 - 279) + (259.7 + 109.8) * (279 - 279) + (109.8 + 109.8) * (279 - 209.7) + (109.8 + 259.7) * (209.7 - 209.7)\right) * 0.5 * 0.00694$
GARAGE (Non-living area)	275	$-\left((417.3 + 417.3) * (611.7 - 873.2) + (417.3 + 261.6) * (873.2 - 873.2) + (261.6 + 261.6) * (873.2 - 804.5) + (261.6 + 267.6) * (804.5 - 804.5) + (267.6 + 267.6) * (804.5 - 611.7) + (267.6 + 417.3) * (611.7 - 611.7)\right) * 0.5 * 0.00694$

8840 Radcliff Drive Northwest, Thomasboro, Calabash, Brunswick County, North Carolina, United States, 28467

Gross Living Area: 1798 sq. ft

Level 2

FLOOR 2
[AREA: 767]



Space	Area (sq. ft)	Calculation <small>Coordinate Polygon Area Algorithm using inches</small>
FLOOR 2 (Living area)	767	$-\left((417.3 + 417.3) * (465.6 - 824.7) + (417.3 + 267.8) * (824.7 - 824.7) + (267.8 + 267.8) * (824.7 - 836.6) + (267.8 + 103.6) * (836.6 - 836.6) + (103.6 + 103.6) * (836.6 - 486.3) + (103.6 + 304.9) * (486.3 - 486.3) + (304.9 + 304.9) * (486.3 - 465.6) + (304.9 + 417.3) * (465.6 - 465.6)\right) * 0.5 * 0.00694$