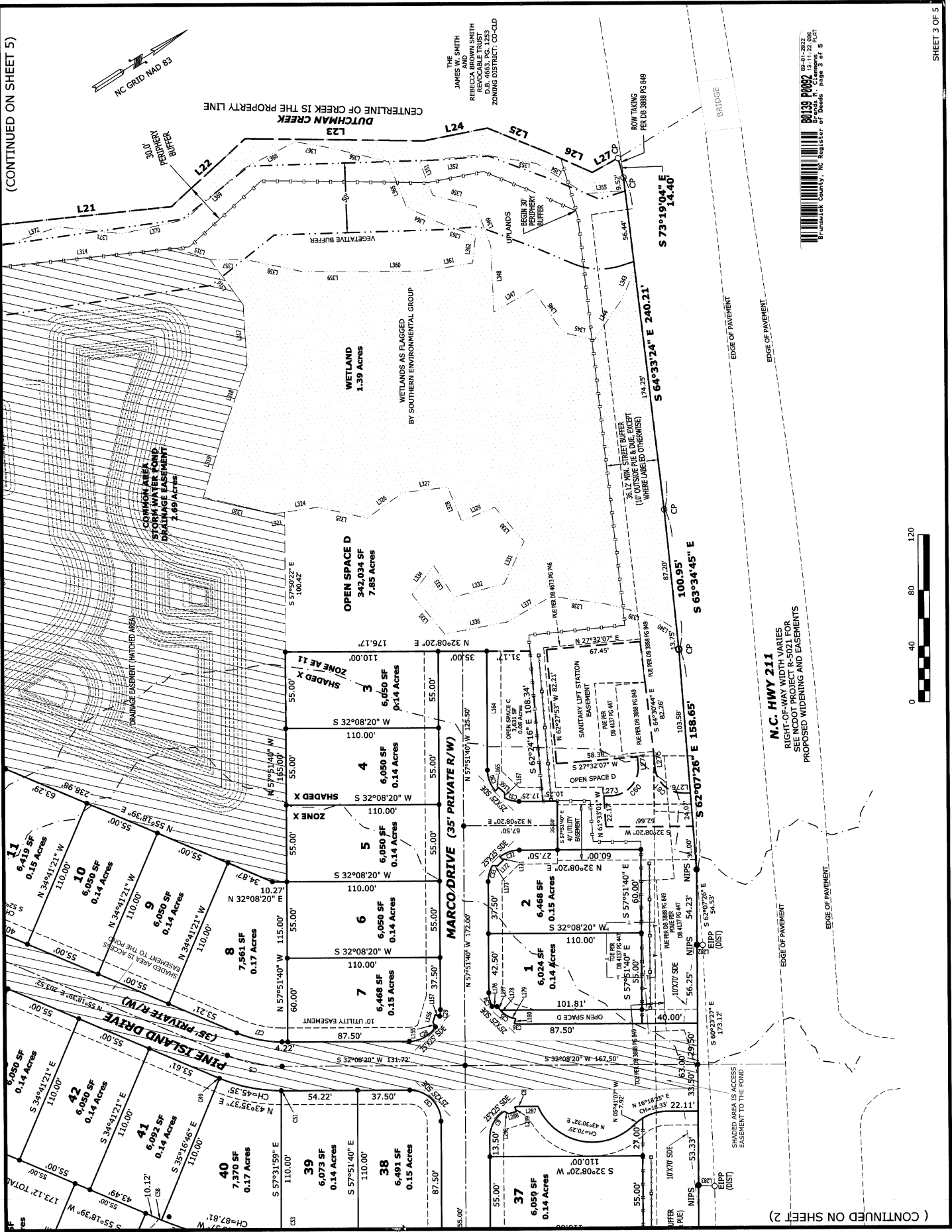
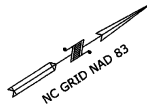


139 / 92

(CONTINUED ON SHEET 5)



THE
JAMES W. SMITH
REBECCA BROWN SMITH
REVOCABLE TRUST
PLANNED DEVELOPMENT
ZONING DISTRICT: CO-CLD



N.C. HWY 211
RIGHT-OF-WAY WIDTH VARIES
SEE N.C. PROJECT R-5021 FOR
PROPOSED WIDENING AND EASEMENTS

(CONTINUED ON SHEET 2)

SHEET 3 OF 5

DS
JRM
9-1-22

MAP CABINET 139 PAGE 92 3 of 5