

N/F
MICHAEL E. HORWIN
REVOCABLE TRUST
DB 2350 PG 1096
PB 2023 PG 305
PIN: 2739-72-4322

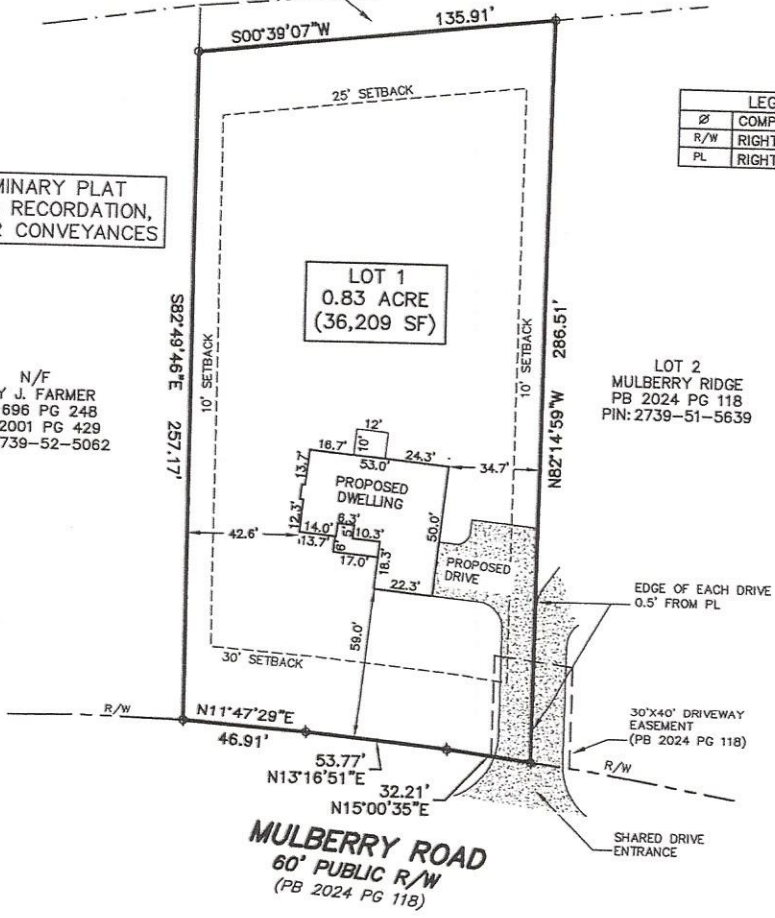
N/F
MICHAEL E. HORWIN
REVOCABLE TRUST
DB 2278 PG 747
PB 2021 PG 158
PIN: 2739-72-4322

PRELIMINARY PLAT
NOT FOR RECORDATION,
SALES OR CONVEYANCES

LEGEND	
⊘	COMPUTED POINT
R/W	RIGHT-OF-WAY LINE
PL	RIGHT-OF-WAY LINE

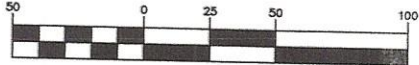
N/F
GUY J. FARMER
DB 696 PG 248
PB 2001 PG 429
PIN: 2739-52-5062

LOT 2
MULBERRY RIDGE
PB 2024 PG 118
PIN: 2739-51-5639

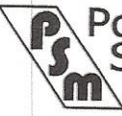


NOTES:

- AREAS COMPUTED BY COORDINATE CALCULATIONS
- ALL DISTANCES SHOWN ARE HORIZONTAL



(IN FEET)
1 inch = 50 ft.



**Pomeroy
Surveying &
Mapping, PLLC**

License No.: P-2841

PO BOX 103
BAILEY, NC. 27807

252-801-3934
info@pomsurvey.com

PLOT PLAN FOR

**NuGEN
BUILDING, LLC**

MULBERRY ROAD
LOT 1, MULBERRY RIDGE, PB 2024 PG 118
DUNN TOWNSHIP
FRANKLIN COUNTY, NORTH CAROLINA

Date: AUGUST, 2024
Client: BUIWOO
Scale: 1"=50'

Project: 24-062
County PIN: 2739-51-5852
Revision:

