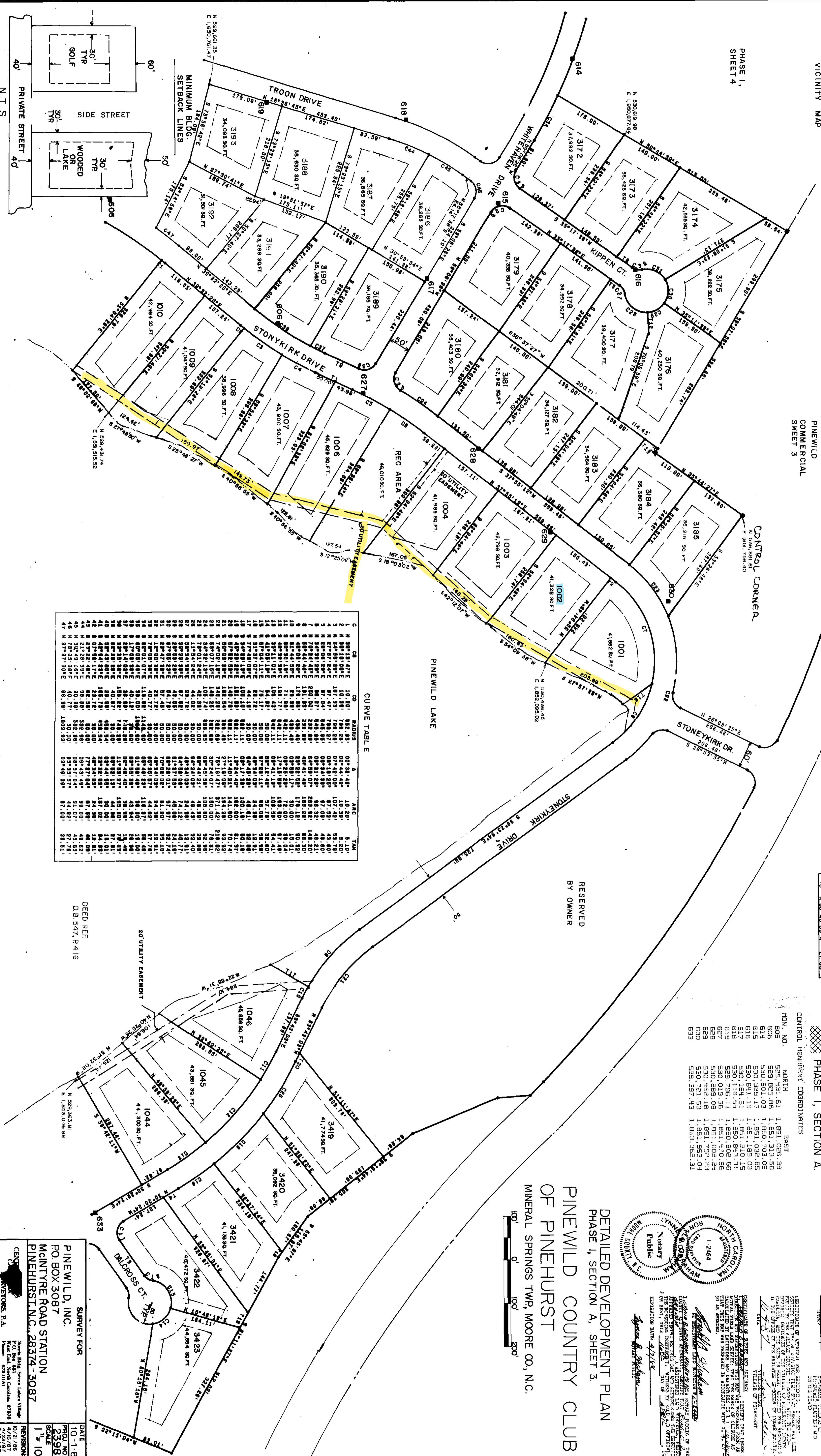




PHASE I,
SHEET 4



PINWILD COMMERCIAL SHEET 3

NC. 211

CONTROL CORNER

PINWILD LAKE

RESERVED BY OWNER

CURVE TABLE

STATION	CH	CD	RA	PI	PT	PC	PT	PI	RA	CD	CH
1	N	89.13	47.7E	10.20	892.89	00°31'48"	10.20	892.89	00°31'48"	10.20	892.89
2	N	89.13	47.7E	10.20	892.89	00°31'48"	10.20	892.89	00°31'48"	10.20	892.89
3	N	89.13	47.7E	10.20	892.89	00°31'48"	10.20	892.89	00°31'48"	10.20	892.89
4	N	89.13	47.7E	10.20	892.89	00°31'48"	10.20	892.89	00°31'48"	10.20	892.89
5	N	89.13	47.7E	10.20	892.89	00°31'48"	10.20	892.89	00°31'48"	10.20	892.89
6	N	89.13	47.7E	10.20	892.89	00°31'48"	10.20	892.89	00°31'48"	10.20	892.89
7	N	89.13	47.7E	10.20	892.89	00°31'48"	10.20	892.89	00°31'48"	10.20	892.89
8	N	89.13	47.7E	10.20	892.89	00°31'48"	10.20	892.89	00°31'48"	10.20	892.89
9	N	89.13	47.7E	10.20	892.89	00°31'48"	10.20	892.89	00°31'48"	10.20	892.89
10	N	89.13	47.7E	10.20	892.89	00°31'48"	10.20	892.89	00°31'48"	10.20	892.89
11	N	89.13	47.7E	10.20	892.89	00°31'48"	10.20	892.89	00°31'48"	10.20	892.89
12	N	89.13	47.7E	10.20	892.89	00°31'48"	10.20	892.89	00°31'48"	10.20	892.89
13	N	89.13	47.7E	10.20	892.89	00°31'48"	10.20	892.89	00°31'48"	10.20	892.89
14	N	89.13	47.7E	10.20	892.89	00°31'48"	10.20	892.89	00°31'48"	10.20	892.89
15	N	89.13	47.7E	10.20	892.89	00°31'48"	10.20	892.89	00°31'48"	10.20	892.89
16	N	89.13	47.7E	10.20	892.89	00°31'48"	10.20	892.89	00°31'48"	10.20	892.89
17	N	89.13	47.7E	10.20	892.89	00°31'48"	10.20	892.89	00°31'48"	10.20	892.89
18	N	89.13	47.7E	10.20	892.89	00°31'48"	10.20	892.89	00°31'48"	10.20	892.89
19	N	89.13	47.7E	10.20	892.89	00°31'48"	10.20	892.89	00°31'48"	10.20	892.89
20	N	89.13	47.7E	10.20	892.89	00°31'48"	10.20	892.89	00°31'48"	10.20	892.89
21	N	89.13	47.7E	10.20	892.89	00°31'48"	10.20	892.89	00°31'48"	10.20	892.89
22	N	89.13	47.7E	10.20	892.89	00°31'48"	10.20	892.89	00°31'48"	10.20	892.89
23	N	89.13	47.7E	10.20	892.89	00°31'48"	10.20	892.89	00°31'48"	10.20	892.89
24	N	89.13	47.7E	10.20	892.89	00°31'48"	10.20	892.89	00°31'48"	10.20	892.89
25	N	89.13	47.7E	10.20	892.89	00°31'48"	10.20	892.89	00°31'48"	10.20	892.89
26	N	89.13	47.7E	10.20	892.89	00°31'48"	10.20	892.89	00°31'48"	10.20	892.89
27	N	89.13	47.7E	10.20	892.89	00°31'48"	10.20	892.89	00°31'48"	10.20	892.89
28	N	89.13	47.7E	10.20	892.89	00°31'48"	10.20	892.89	00°31'48"	10.20	892.89
29	N	89.13	47.7E	10.20	892.89	00°31'48"	10.20	892.89	00°31'48"	10.20	892.89
30	N	89.13	47.7E	10.20	892.89	00°31'48"	10.20	892.89	00°31'48"	10.20	892.89
31	N	89.13	47.7E	10.20	892.89	00°31'48"	10.20	892.89	00°31'48"	10.20	892.89
32	N	89.13	47.7E	10.20	892.89	00°31'48"	10.20	892.89	00°31'48"	10.20	892.89
33	N	89.13	47.7E	10.20	892.89	00°31'48"	10.20	892.89	00°31'48"	10.20	892.89
34	N	89.13	47.7E	10.20	892.89	00°31'48"	10.20	892.89	00°31'48"	10.20	892.89
35	N	89.13	47.7E	10.20	892.89	00°31'48"	10.20	892.89	00°31'48"	10.20	892.89
36	N	89.13	47.7E	10.20	892.89	00°31'48"	10.20	892.89	00°31'48"	10.20	892.89
37	N	89.13	47.7E	10.20	892.89	00°31'48"	10.20	892.89	00°31'48"	10.20	892.89
38	N	89.13	47.7E	10.20	892.89	00°31'48"	10.20	892.89	00°31'48"	10.20	892.89
39	N	89.13	47.7E	10.20	892.89	00°31'48"	10.20	892.89	00°31'48"	10.20	892.89
40	N	89.13	47.7E	10.20	892.89	00°31'48"	10.20	892.89	00°31'48"	10.20	892.89
41	N	89.13	47.7E	10.20	892.89	00°31'48"	10.20	892.89	00°31'48"	10.20	892.89
42	N	89.13	47.7E	10.20	892.89	00°31'48"	10.20	892.89	00°31'48"	10.20	892.89
43	N	89.13	47.7E	10.20	892.89	00°31'48"	10.20	892.89	00°31'48"	10.20	892.89
44	N	89.13	47.7E	10.20	892.89	00°31'48"	10.20	892.89	00°31'48"	10.20	892.89
45	N	89.13	47.7E	10.20	892.89	00°31'48"	10.20	892.89	00°31'48"	10.20	892.89
46	N	89.13	47.7E	10.20	892.89	00°31'48"	10.20	892.89	00°31'48"	10.20	892.89
47	N	89.13	47.7E	10.20	892.89	00°31'48"	10.20	892.89	00°31'48"	10.20	892.89
48	N	89.13	47.7E	10.20	892.89	00°31'48"	10.20	892.89	00°31'48"	10.20	892.89
49	N	89.13	47.7E	10.20	892.89	00°31'48"	10.20	892.89	00°31'48"	10.20	892.89
50	N	89.13	47.7E	10.20	892.89	00°31'48"	10.20	892.89	00°31'48"	10.20	892.89

TANGENT TABLE

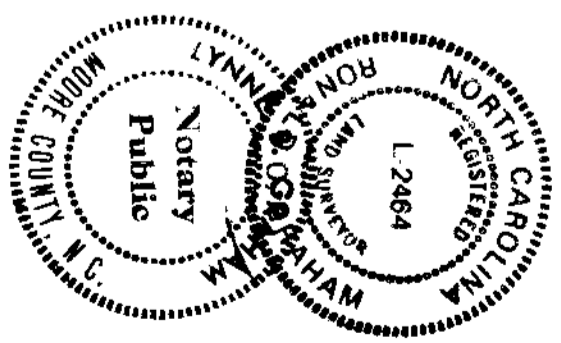
STATION	CH	CD	RA	PI	PT	PC	PT	PI	RA	CD	CH
1	N	89.13	47.7E	10.20	892.89	00°31'48"	10.20	892.89	00°31'48"	10.20	892.89
2	N	89.13	47.7E	10.20	892.89	00°31'48"	10.20	892.89	00°31'48"	10.20	892.89
3	N	89.13	47.7E	10.20	892.89	00°31'48"	10.20	892.89	00°31'48"	10.20	892.89
4	N	89.13	47.7E	10.20	892.89	00°31'48"	10.20	892.89	00°31'48"	10.20	892.89
5	N	89.13	47.7E	10.20	892.89	00°31'48"	10.20	892.89	00°31'48"	10.20	892.89
6	N	89.13	47.7E	10.20	892.89	00°31'48"	10.20	892.89	00°31'48"	10.20	892.89
7	N	89.13	47.7E	10.20	892.89	00°31'48"	10.20	892.89	00°31'48"	10.20	892.89
8	N	89.13	47.7E	10.20	892.89	00°31'48"	10.20	892.89	00°31'48"	10.20	892.89
9	N	89.13	47.7E	10.20	892.89	00°31'48"	10.20	892.89	00°31'48"	10.20	892.89
10	N	89.13	47.7E	10.20	892.89	00°31'48"	10.20	892.89	00°31'48"	10.20	892.89
11	N	89.13	47.7E	10.20	892.89	00°31'48"	10.20	892.89	00°31'48"	10.20	892.89
12	N	89.13	47.7E	10.20	892.89	00°31'48"	10.20	892.89	00°31'48"	10.20	892.89
13	N	89.13	47.7E	10.20	892.89	00°31'48"	10.20	892.89	00°31'48"	10.20	892.89
14	N	89.13	47.7E	10.20	892.89	00°31'48"	10.20	892.89	00°31'48"	10.20	892.89
15	N	89.13	47.7E	10.20	892.89	00°31'48"	10.20	892.89	00°31'48"	10.20	892.89
16	N	89.13	47.7E	10.20	892.89	00°31'48"	10.20	892.89	00°31'48"	10.20	892.89
17	N	89.13	47.7E	10.20	892.89	00°31'48"	10.20	892.89	00°31'48"	10.20	892.89
18	N	89.13	47.7E	10.20	892.89	00°31'48"	10.20	892.89	00°31'48"	10.20	892.89
19	N	89.13	47.7E	10.20	892.89	00°31'48"	10.20	892.89	00°31'48"	10.20	892.89
20	N	89.13	47.7E	10.20	892.89	00°31'48"	10.20	892.89	00°31'48"	10.20	892.89

NOTE:
AREA NOT INCLUDED IN PHASE I, SECTION A.

CONTROL POINTS COORDINATES

MON. NO.	NORTH	EAST
601	1,951,352.39	529,357.33
602	1,951,313.56	529,357.33
603	1,950,703.05	529,357.33
604	1,951,032.85	529,357.33
605	1,951,189.03	529,357.33
606	1,951,210.15	529,357.33
607	1,950,813.15	529,357.33
608	1,950,802.56	529,357.33
609	1,951,400.56	529,357.33
610	1,951,792.23	529,357.33
611	1,951,953.04	529,357.33
612	1,953,352.31	529,357.33

DETAILED DEVELOPMENT PLAN
OF PINWILD COUNTRY CLUB
MINERAL SPRINGS TWP, MOORE CO., N.C.



NOTARIAL PUBLIC
STATE OF NORTH CAROLINA
My Comm. Expires 12/31/2023
I, the undersigned, a Notary Public for the State of North Carolina, do hereby certify that the foregoing is a true and correct copy of the original plan and map as filed in my office on this 10th day of April, 2023.

CERTIFICATE OF APPROVAL AND DESIGNATION...
I, the undersigned, a Notary Public for the State of North Carolina, do hereby certify that the foregoing is a true and correct copy of the original plan and map as filed in my office on this 10th day of April, 2023.

PINWILD, INC.
PO BOX 3087
MCINTYRE ROAD STATION
PINEHURST, N.C. 28374-3087

DATE: 10-1-86
SCALE: 1" = 100'