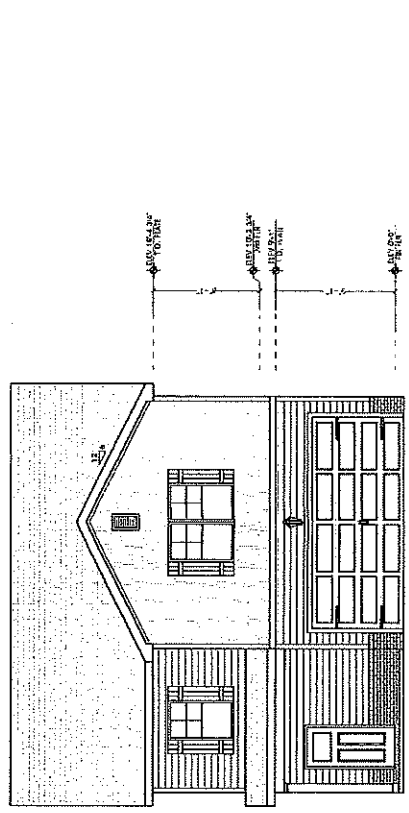


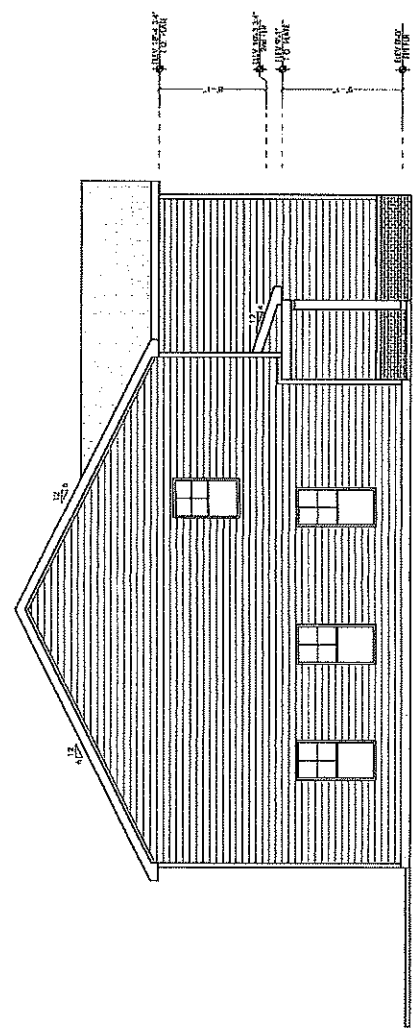
DATE	DESCRIPTION	BY
7-23-2011	7-23-2011	BY
8-12-2011	8-12-2011	BY
8-12-2011	8-12-2011	BY
8-12-2011	8-12-2011	BY
8-12-2011	8-12-2011	BY

DATE: 7-23-2011  
 SHEET: 1

This work is the property of Winslow Homes. It is to be used only for the project and location specified. It is not to be reproduced, stored in a retrieval system, or transmitted in any form or by any means, electronic, mechanical, photocopying, recording, or by any information storage and retrieval system, without the prior written permission of Winslow Homes, Inc. © 2011 Winslow Homes, Inc.



**FRONT ELEVATION**  
 1/4" = 1'-0"



**LEFT SIDE ELEVATION**  
 1/4" = 1'-0"

*Contractor Copy  
 P-24-4147  
 9154 Phoenix Ct*



**The DUNN**  
 ELEVATION B

**INVENTORY**  
 Countryside Farms, Homesite 02

DATE	BY
07/12/11	CS
08/25/11	CS
07/26/11	CS
07/26/11	CS

PROJECT NUMBER: 2-243-PH01-11-02  
 SHEET: 3

For the contract, the architect is responsible for the accuracy of the information provided by the client. The architect is not responsible for the accuracy of the information provided by the client. The architect is not responsible for the accuracy of the information provided by the client.

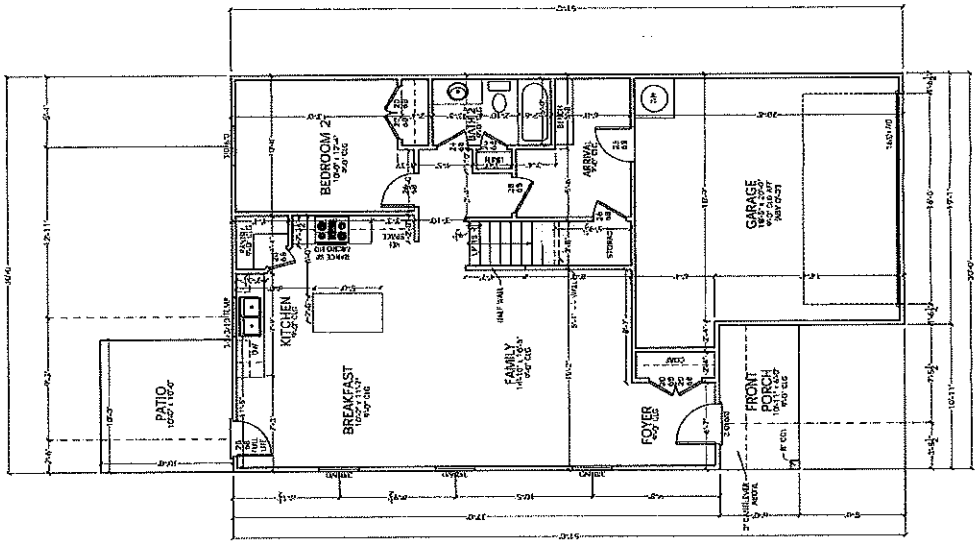
- ABBREVIATIONS**
- ACF ACCT. FIRST FLOOR
  - ADJ ADJACENT
  - AMB AMBULATORY
  - BSR BATH
  - BSR2 BATH 2
  - BSR3 BATH 3
  - BSR4 BATH 4
  - BSR5 BATH 5
  - BSR6 BATH 6
  - BSR7 BATH 7
  - BSR8 BATH 8
  - BSR9 BATH 9
  - BSR10 BATH 10
  - BSR11 BATH 11
  - BSR12 BATH 12
  - BSR13 BATH 13
  - BSR14 BATH 14
  - BSR15 BATH 15
  - BSR16 BATH 16
  - BSR17 BATH 17
  - BSR18 BATH 18
  - BSR19 BATH 19
  - BSR20 BATH 20
  - BSR21 BATH 21
  - BSR22 BATH 22
  - BSR23 BATH 23
  - BSR24 BATH 24
  - BSR25 BATH 25
  - BSR26 BATH 26
  - BSR27 BATH 27
  - BSR28 BATH 28
  - BSR29 BATH 29
  - BSR30 BATH 30
  - BSR31 BATH 31
  - BSR32 BATH 32
  - BSR33 BATH 33
  - BSR34 BATH 34
  - BSR35 BATH 35
  - BSR36 BATH 36
  - BSR37 BATH 37
  - BSR38 BATH 38
  - BSR39 BATH 39
  - BSR40 BATH 40
  - BSR41 BATH 41
  - BSR42 BATH 42
  - BSR43 BATH 43
  - BSR44 BATH 44
  - BSR45 BATH 45
  - BSR46 BATH 46
  - BSR47 BATH 47
  - BSR48 BATH 48
  - BSR49 BATH 49
  - BSR50 BATH 50
  - BSR51 BATH 51
  - BSR52 BATH 52
  - BSR53 BATH 53
  - BSR54 BATH 54
  - BSR55 BATH 55
  - BSR56 BATH 56
  - BSR57 BATH 57
  - BSR58 BATH 58
  - BSR59 BATH 59
  - BSR60 BATH 60
  - BSR61 BATH 61
  - BSR62 BATH 62
  - BSR63 BATH 63
  - BSR64 BATH 64
  - BSR65 BATH 65
  - BSR66 BATH 66
  - BSR67 BATH 67
  - BSR68 BATH 68
  - BSR69 BATH 69
  - BSR70 BATH 70
  - BSR71 BATH 71
  - BSR72 BATH 72
  - BSR73 BATH 73
  - BSR74 BATH 74
  - BSR75 BATH 75
  - BSR76 BATH 76
  - BSR77 BATH 77
  - BSR78 BATH 78
  - BSR79 BATH 79
  - BSR80 BATH 80
  - BSR81 BATH 81
  - BSR82 BATH 82
  - BSR83 BATH 83
  - BSR84 BATH 84
  - BSR85 BATH 85
  - BSR86 BATH 86
  - BSR87 BATH 87
  - BSR88 BATH 88
  - BSR89 BATH 89
  - BSR90 BATH 90
  - BSR91 BATH 91
  - BSR92 BATH 92
  - BSR93 BATH 93
  - BSR94 BATH 94
  - BSR95 BATH 95
  - BSR96 BATH 96
  - BSR97 BATH 97
  - BSR98 BATH 98
  - BSR99 BATH 99
  - BSR100 BATH 100

ROOM	AREA
ACF	13.64
BSR	2.50
BSR2	2.50
BSR3	2.50
BSR4	2.50
BSR5	2.50
BSR6	2.50
BSR7	2.50
BSR8	2.50
BSR9	2.50
BSR10	2.50
BSR11	2.50
BSR12	2.50
BSR13	2.50
BSR14	2.50
BSR15	2.50
BSR16	2.50
BSR17	2.50
BSR18	2.50
BSR19	2.50
BSR20	2.50
BSR21	2.50
BSR22	2.50
BSR23	2.50
BSR24	2.50
BSR25	2.50
BSR26	2.50
BSR27	2.50
BSR28	2.50
BSR29	2.50
BSR30	2.50
BSR31	2.50
BSR32	2.50
BSR33	2.50
BSR34	2.50
BSR35	2.50
BSR36	2.50
BSR37	2.50
BSR38	2.50
BSR39	2.50
BSR40	2.50
BSR41	2.50
BSR42	2.50
BSR43	2.50
BSR44	2.50
BSR45	2.50
BSR46	2.50
BSR47	2.50
BSR48	2.50
BSR49	2.50
BSR50	2.50
BSR51	2.50
BSR52	2.50
BSR53	2.50
BSR54	2.50
BSR55	2.50
BSR56	2.50
BSR57	2.50
BSR58	2.50
BSR59	2.50
BSR60	2.50
BSR61	2.50
BSR62	2.50
BSR63	2.50
BSR64	2.50
BSR65	2.50
BSR66	2.50
BSR67	2.50
BSR68	2.50
BSR69	2.50
BSR70	2.50
BSR71	2.50
BSR72	2.50
BSR73	2.50
BSR74	2.50
BSR75	2.50
BSR76	2.50
BSR77	2.50
BSR78	2.50
BSR79	2.50
BSR80	2.50
BSR81	2.50
BSR82	2.50
BSR83	2.50
BSR84	2.50
BSR85	2.50
BSR86	2.50
BSR87	2.50
BSR88	2.50
BSR89	2.50
BSR90	2.50
BSR91	2.50
BSR92	2.50
BSR93	2.50
BSR94	2.50
BSR95	2.50
BSR96	2.50
BSR97	2.50
BSR98	2.50
BSR99	2.50
BSR100	2.50

**NOTE:**  
 SET WINDOW HEADERS  
 @ 7'-11 1/2" AFF. UNO

- NOTES:**
- 1) WALL PLATE HEIGHT, UNO
  - 2) SET WINDOWS @ 7'-11 1/2" AFF. UNO
  - 3) INTERIOR WALLS ARE @ 4" WIDE UNO
  - 4) INTERIOR WALLS ARE @ 4" WIDE UNO
  - 5) DIMENSIONS ARE TO FINISH UNO
  - 6) WHERE WINDOW SILLS ARE 6'-0" OR GREATER ABOVE FINISHED GRADE, WINDOW SILL MUST BE MIN. 2'-4" AFF.

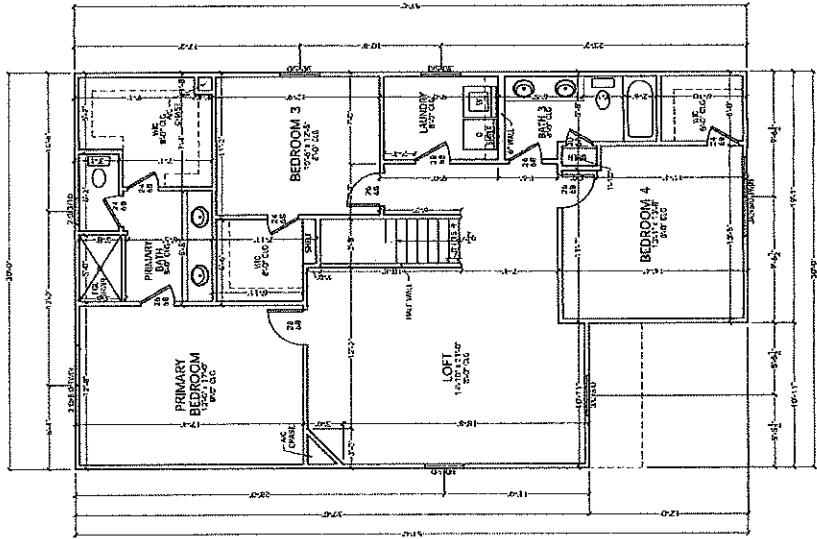
**FIRST FLOOR PLAN**  
 100-110



**INVENTORY**  
 CountrySide Farms, Homestead 02

PLAN NUMBER	DATE	BY
2325-2000-1-127-10	07-18-11	CS
	07-18-11	CS
	07-18-11	CS
	07-18-11	CS
	07-18-11	CS
	07-18-11	CS
	07-18-11	CS
	07-18-11	CS
	07-18-11	CS
	07-18-11	CS

DATE: 07/18/11  
 SHEET: 4  
 PROJECT: 2325-2000-1-127-10  
 DRAWING: SECOND FLOOR PLAN  
 SCALE: 1/8" = 1'-0"  
 NOTES:  
 1) SEE ELEVATION B FOR WINDOW SIZES AND FINISHES.  
 2) SEE ELEVATION B FOR WINDOW SIZES AND FINISHES.  
 3) SEE ELEVATION B FOR WINDOW SIZES AND FINISHES.  
 4) SEE ELEVATION B FOR WINDOW SIZES AND FINISHES.  
 5) SEE ELEVATION B FOR WINDOW SIZES AND FINISHES.  
 6) SEE ELEVATION B FOR WINDOW SIZES AND FINISHES.  
 7) SEE ELEVATION B FOR WINDOW SIZES AND FINISHES.  
 8) SEE ELEVATION B FOR WINDOW SIZES AND FINISHES.  
 9) SEE ELEVATION B FOR WINDOW SIZES AND FINISHES.  
 10) SEE ELEVATION B FOR WINDOW SIZES AND FINISHES.  
 11) SEE ELEVATION B FOR WINDOW SIZES AND FINISHES.  
 12) SEE ELEVATION B FOR WINDOW SIZES AND FINISHES.  
 13) SEE ELEVATION B FOR WINDOW SIZES AND FINISHES.  
 14) SEE ELEVATION B FOR WINDOW SIZES AND FINISHES.  
 15) SEE ELEVATION B FOR WINDOW SIZES AND FINISHES.  
 16) SEE ELEVATION B FOR WINDOW SIZES AND FINISHES.  
 17) SEE ELEVATION B FOR WINDOW SIZES AND FINISHES.  
 18) SEE ELEVATION B FOR WINDOW SIZES AND FINISHES.  
 19) SEE ELEVATION B FOR WINDOW SIZES AND FINISHES.  
 20) SEE ELEVATION B FOR WINDOW SIZES AND FINISHES.  
 21) SEE ELEVATION B FOR WINDOW SIZES AND FINISHES.  
 22) SEE ELEVATION B FOR WINDOW SIZES AND FINISHES.  
 23) SEE ELEVATION B FOR WINDOW SIZES AND FINISHES.  
 24) SEE ELEVATION B FOR WINDOW SIZES AND FINISHES.  
 25) SEE ELEVATION B FOR WINDOW SIZES AND FINISHES.  
 26) SEE ELEVATION B FOR WINDOW SIZES AND FINISHES.  
 27) SEE ELEVATION B FOR WINDOW SIZES AND FINISHES.  
 28) SEE ELEVATION B FOR WINDOW SIZES AND FINISHES.  
 29) SEE ELEVATION B FOR WINDOW SIZES AND FINISHES.  
 30) SEE ELEVATION B FOR WINDOW SIZES AND FINISHES.  
 31) SEE ELEVATION B FOR WINDOW SIZES AND FINISHES.  
 32) SEE ELEVATION B FOR WINDOW SIZES AND FINISHES.  
 33) SEE ELEVATION B FOR WINDOW SIZES AND FINISHES.  
 34) SEE ELEVATION B FOR WINDOW SIZES AND FINISHES.  
 35) SEE ELEVATION B FOR WINDOW SIZES AND FINISHES.  
 36) SEE ELEVATION B FOR WINDOW SIZES AND FINISHES.  
 37) SEE ELEVATION B FOR WINDOW SIZES AND FINISHES.  
 38) SEE ELEVATION B FOR WINDOW SIZES AND FINISHES.  
 39) SEE ELEVATION B FOR WINDOW SIZES AND FINISHES.  
 40) SEE ELEVATION B FOR WINDOW SIZES AND FINISHES.  
 41) SEE ELEVATION B FOR WINDOW SIZES AND FINISHES.  
 42) SEE ELEVATION B FOR WINDOW SIZES AND FINISHES.  
 43) SEE ELEVATION B FOR WINDOW SIZES AND FINISHES.  
 44) SEE ELEVATION B FOR WINDOW SIZES AND FINISHES.  
 45) SEE ELEVATION B FOR WINDOW SIZES AND FINISHES.  
 46) SEE ELEVATION B FOR WINDOW SIZES AND FINISHES.  
 47) SEE ELEVATION B FOR WINDOW SIZES AND FINISHES.  
 48) SEE ELEVATION B FOR WINDOW SIZES AND FINISHES.  
 49) SEE ELEVATION B FOR WINDOW SIZES AND FINISHES.  
 50) SEE ELEVATION B FOR WINDOW SIZES AND FINISHES.  
 51) SEE ELEVATION B FOR WINDOW SIZES AND FINISHES.  
 52) SEE ELEVATION B FOR WINDOW SIZES AND FINISHES.  
 53) SEE ELEVATION B FOR WINDOW SIZES AND FINISHES.  
 54) SEE ELEVATION B FOR WINDOW SIZES AND FINISHES.  
 55) SEE ELEVATION B FOR WINDOW SIZES AND FINISHES.  
 56) SEE ELEVATION B FOR WINDOW SIZES AND FINISHES.  
 57) SEE ELEVATION B FOR WINDOW SIZES AND FINISHES.  
 58) SEE ELEVATION B FOR WINDOW SIZES AND FINISHES.  
 59) SEE ELEVATION B FOR WINDOW SIZES AND FINISHES.  
 60) SEE ELEVATION B FOR WINDOW SIZES AND FINISHES.  
 61) SEE ELEVATION B FOR WINDOW SIZES AND FINISHES.  
 62) SEE ELEVATION B FOR WINDOW SIZES AND FINISHES.  
 63) SEE ELEVATION B FOR WINDOW SIZES AND FINISHES.  
 64) SEE ELEVATION B FOR WINDOW SIZES AND FINISHES.  
 65) SEE ELEVATION B FOR WINDOW SIZES AND FINISHES.  
 66) SEE ELEVATION B FOR WINDOW SIZES AND FINISHES.  
 67) SEE ELEVATION B FOR WINDOW SIZES AND FINISHES.  
 68) SEE ELEVATION B FOR WINDOW SIZES AND FINISHES.  
 69) SEE ELEVATION B FOR WINDOW SIZES AND FINISHES.  
 70) SEE ELEVATION B FOR WINDOW SIZES AND FINISHES.  
 71) SEE ELEVATION B FOR WINDOW SIZES AND FINISHES.  
 72) SEE ELEVATION B FOR WINDOW SIZES AND FINISHES.  
 73) SEE ELEVATION B FOR WINDOW SIZES AND FINISHES.  
 74) SEE ELEVATION B FOR WINDOW SIZES AND FINISHES.  
 75) SEE ELEVATION B FOR WINDOW SIZES AND FINISHES.  
 76) SEE ELEVATION B FOR WINDOW SIZES AND FINISHES.  
 77) SEE ELEVATION B FOR WINDOW SIZES AND FINISHES.  
 78) SEE ELEVATION B FOR WINDOW SIZES AND FINISHES.  
 79) SEE ELEVATION B FOR WINDOW SIZES AND FINISHES.  
 80) SEE ELEVATION B FOR WINDOW SIZES AND FINISHES.  
 81) SEE ELEVATION B FOR WINDOW SIZES AND FINISHES.  
 82) SEE ELEVATION B FOR WINDOW SIZES AND FINISHES.  
 83) SEE ELEVATION B FOR WINDOW SIZES AND FINISHES.  
 84) SEE ELEVATION B FOR WINDOW SIZES AND FINISHES.  
 85) SEE ELEVATION B FOR WINDOW SIZES AND FINISHES.  
 86) SEE ELEVATION B FOR WINDOW SIZES AND FINISHES.  
 87) SEE ELEVATION B FOR WINDOW SIZES AND FINISHES.  
 88) SEE ELEVATION B FOR WINDOW SIZES AND FINISHES.  
 89) SEE ELEVATION B FOR WINDOW SIZES AND FINISHES.  
 90) SEE ELEVATION B FOR WINDOW SIZES AND FINISHES.  
 91) SEE ELEVATION B FOR WINDOW SIZES AND FINISHES.  
 92) SEE ELEVATION B FOR WINDOW SIZES AND FINISHES.  
 93) SEE ELEVATION B FOR WINDOW SIZES AND FINISHES.  
 94) SEE ELEVATION B FOR WINDOW SIZES AND FINISHES.  
 95) SEE ELEVATION B FOR WINDOW SIZES AND FINISHES.  
 96) SEE ELEVATION B FOR WINDOW SIZES AND FINISHES.  
 97) SEE ELEVATION B FOR WINDOW SIZES AND FINISHES.  
 98) SEE ELEVATION B FOR WINDOW SIZES AND FINISHES.  
 99) SEE ELEVATION B FOR WINDOW SIZES AND FINISHES.  
 100) SEE ELEVATION B FOR WINDOW SIZES AND FINISHES.



**NOTE:**  
 SET WINDOW HEADERS  
 @ 5'-11 1/2" AFF. UNO

- 1) WALL & CEILING FINISHES UNO
- 2) SET WINDOWS @ 5'-11 1/2" AFF. UNO
- 3) INTERIOR WALLS ARE @ 4" THICK UNO
- 4) INTERIOR WALLS ARE @ 4" THICK UNO
- 5) DIMENSIONS ARE TO FINISH
- 6) WHERE WINDOW SILLS ARE 6'-0" OR GREATER ABOVE FINISHED GRADE, WINDOW SILL MUST BE MIN. 24" AFF.

**SECOND FLOOR PLAN**  
 1/8" = 1'-0"