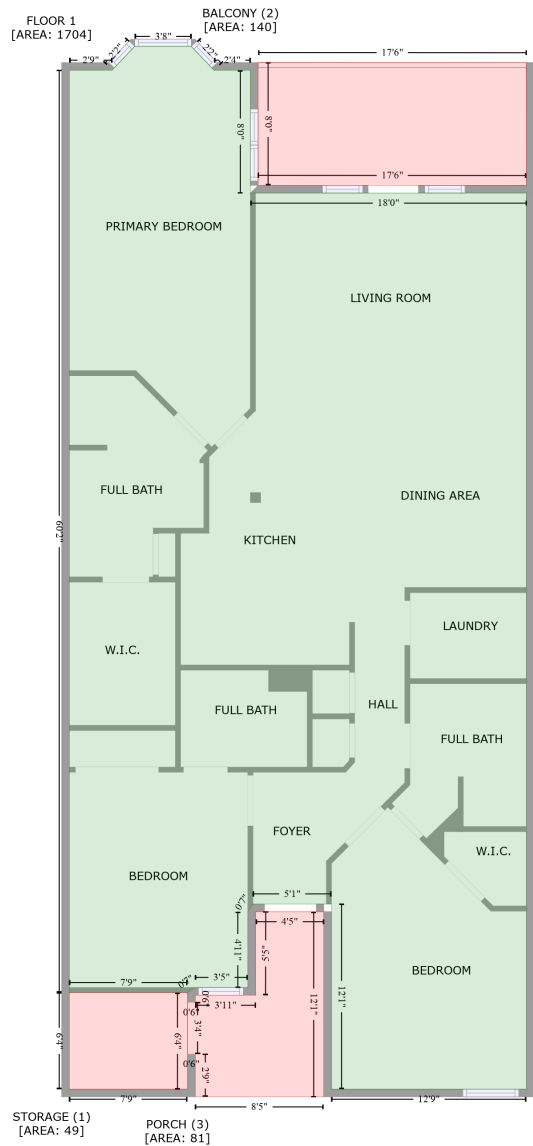


2252 Dolphin Shores Drive Southwest, Supply, Brunswick County, North Carolina, United States, 28462, 5

Gross Living Area: 1704 sq. ft



Space	Area (sq. ft)	Calculation <small>Coordinate Polygon Area Algorithm using inches</small>
FLOOR 1 (Living area)	1704	$ \begin{aligned} & -((121.3 + 139.1) * (25 - 43.7) + (139.1 + 167.5) * (43.7 - 43.7) + (167.5 + 167.5) * (43.7 - 139.8) + \\ & (167.5 + 383.6) * (139.8 - 139.8) + (383.6 + 383.6) * (139.8 - 840.9) + (383.6 + 231) * (840.9 - \\ & 840.9) + (231 + 231) * (840.9 - 696.1) + (231 + 169.6) * (696.1 - 696.1) + (169.6 + 165.6) * \\ & (696.1 - 702.1) + (165.6 + 165.6) * (702.1 - 761.4) + (165.6 + 124.4) * (761.4 - 761.4) + (124.4 + \\ & 118.4) * (761.4 - 765.4) + (118.4 + 25.8) * (765.4 - 765.4) + (25.8 + 25.8) * (765.4 - 43.7) + (25.8 \\ & + 59.2) * (43.7 - 43.7) + (59.2 + 77) * (43.7 - 25) + (77 + 121.3) * (25 - 25)) * 0.5 * 0.00694 \end{aligned} $

2252 Dolphin Shores Drive Southwest, Supply, Brunswick County, North Carolina, United States, 28462, 5

Gross Living Area: 1704 sq. ft

Space	Area (sq. ft)	Calculation <small>Coordinate Polygon Area Algorithm using inches</small>
STORAGE (Non-living area)	49	$-((118.4 + 118.4) * (765.4 - 840.9) + (118.4 + 25.8) * (840.9 - 840.9) + (25.8 + 25.8) * (840.9 - 765.4) + (25.8 + 118.4) * (765.4 - 765.4)) * 0.5 * 0.00694$
BALCONY (Non-living area)	140	$-((173.5 + 383.6) * (37.7 - 37.9) + (383.6 + 383.6) * (37.9 - 133.9) + (383.6 + 173.5) * (133.9 - 133.8) + (173.5 + 173.5) * (133.8 - 37.7)) * 0.5 * 0.00694$
PORCH (Non-living area)	81	$-((225 + 225) * (702.1 - 846.9) + (225 + 124.4) * (846.9 - 846.9) + (124.4 + 124.4) * (846.9 - 813.5) + (124.4 + 118.4) * (813.5 - 813.5) + (118.4 + 118.4) * (813.5 - 773.1) + (118.4 + 124.4) * (773.1 - 773.1) + (124.4 + 124.4) * (773.1 - 767.4) + (124.4 + 171.6) * (767.4 - 767.4) + (171.6 + 171.7) * (767.4 - 702.1) + (171.7 + 225) * (702.1 - 702.1)) * 0.5 * 0.00694$