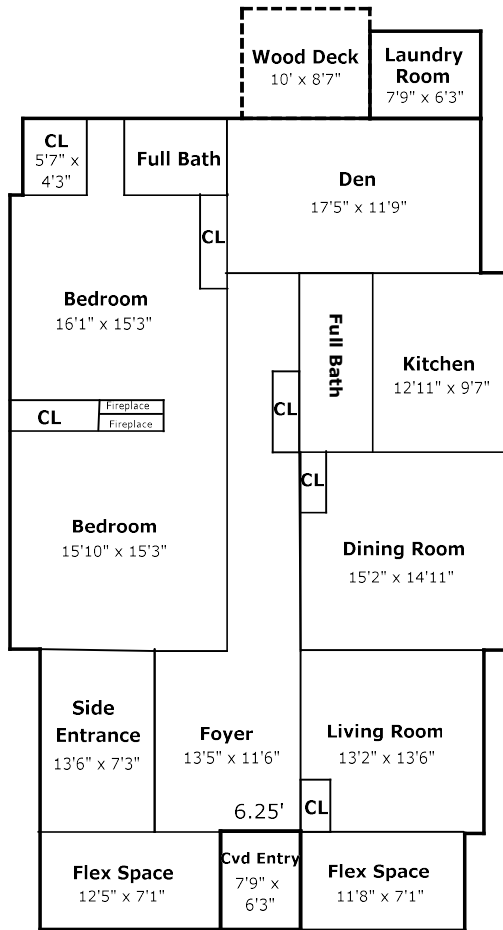


Building Sketch

Borrower			
Property Address 412 N George St			
City	Goldsboro	County	State NC Zip Code 27530
Lender/Client			



412 N George Street, Goldsboro, NC 27530

Interior walls are approximate and may not be to scale. Interior measurements were taken and are accurate.

TOTAL Sketch by a la mode

Area Calculations Summary

Living Area	Calculation Details	
First Floor	59.15 Sq ft	$8.66 \times 6.83 = 59.15$
First Floor	2291.39 Sq ft	$12.83 \times 7.58 = 97.25$ $14.12 \times 7.66 = 108.16$ $35.78 \times 6 = 214.68$ $36.78 \times 6.08 = 223.62$ $39.11 \times 29.42 = 1150.62$ $14.25 \times 20.37 = 290.27$ $14.33 \times 14.35 = 205.64$ $0.07 \times 16.41 = 1.15$
Total Living Area (Rounded):	2351 Sq ft	
Non-living Area		
Wood Deck	85.8 Sq ft	$10 \times 8.58 = 85.8$
Covered Entry	47.88 Sq ft	$7.66 \times 6.25 = 47.88$