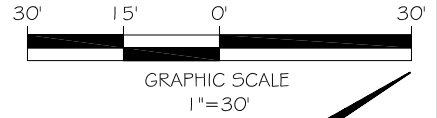
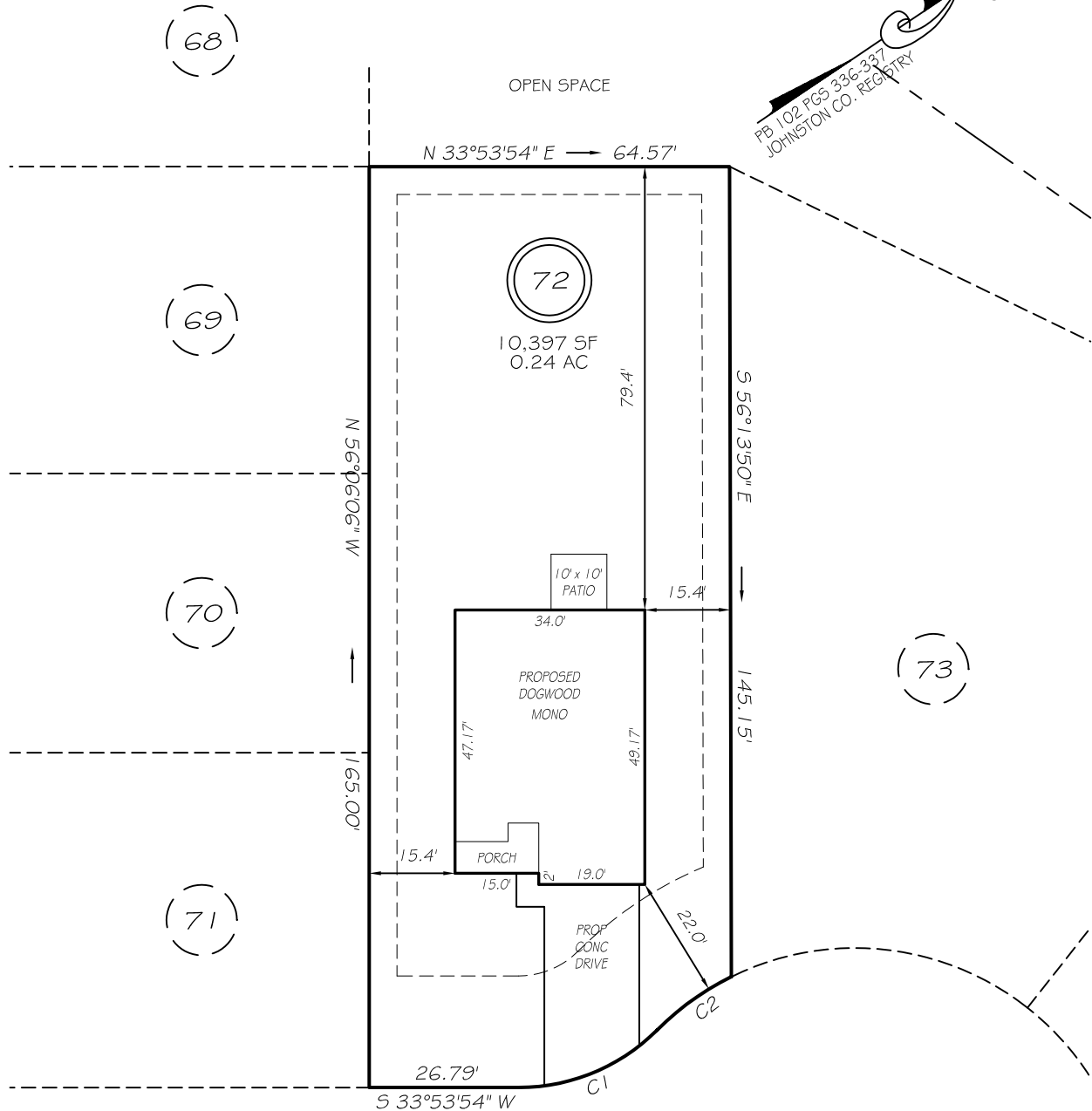


I, MICHAEL P. GRIFFIN, certify that under my direction and supervision this map was drawn from an actual field survey, that the error of closure of the survey as calculated by coordinates is 1: 10,000+; that the area shown hereon was calculated by coordinates. Dashed lines shown hereon were not surveyed.

Witness my hand and seal this day of MONTH 2025.



PB 102 PGS 336-337
JOHNSTON CO. REGISTRY



CHLOE COURT
50' PUBLIC R/W

IMPERVIOUS AREAS

HOUSE	1642 SQ. FT.
DRIVE & WALKS	596 SQ. FT.
PATIO	100 SQ. FT.
TOTAL	2338 SQ. FT.
ALLOWED	3500 SQ. FT.

SETBACKS

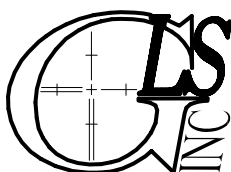
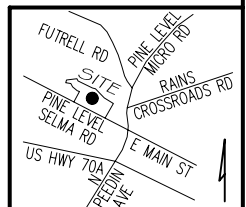
FRONT	20'
REAR	5'
SIDE	5'
CORNER SIDE	20'

C1 R=35.00' L=27.55' N11°20'56"E 26.84'
C2 R=50.00' L=16.46' N01°46'03"W 16.39'

P R E L I M I N A R Y
NOT FOR RECORDATION,
SALES OR CONVEYANCE

LEGEND

EIP	EXISTING IRON PIPE	FES	FLARED END SECTION
ISS	IRON STAKE SET	WM	WATER METER
R/W	RIGHT OF WAY	CO	CLEAN OUT
N/F	NOW OR FORMERLY	FH	FIRE HYDRANT
EIS	EXISTING IRON STAKE	CB	CATCH BASIN



GRIFFIN LAND SURVEYING, INC.

P. O. BOX 148
FUQUAY-VARINA, NC 27526
(919) - 567 - 1963

FIRM LIC.# C-1345

PLOT PLAN
FOR
BEN STOUT
CONSTRUCTION
EMILY GARDENS

LOT 72

CHLOE COURT
SELMA, N.C.

JOHNSTON COUNTY PINE LEVEL TOWNSHIP

DRAWN BY **KDF**

DATE **1/6/25**

CHECKED BY **MPG**

SCALE **1" = 30'**