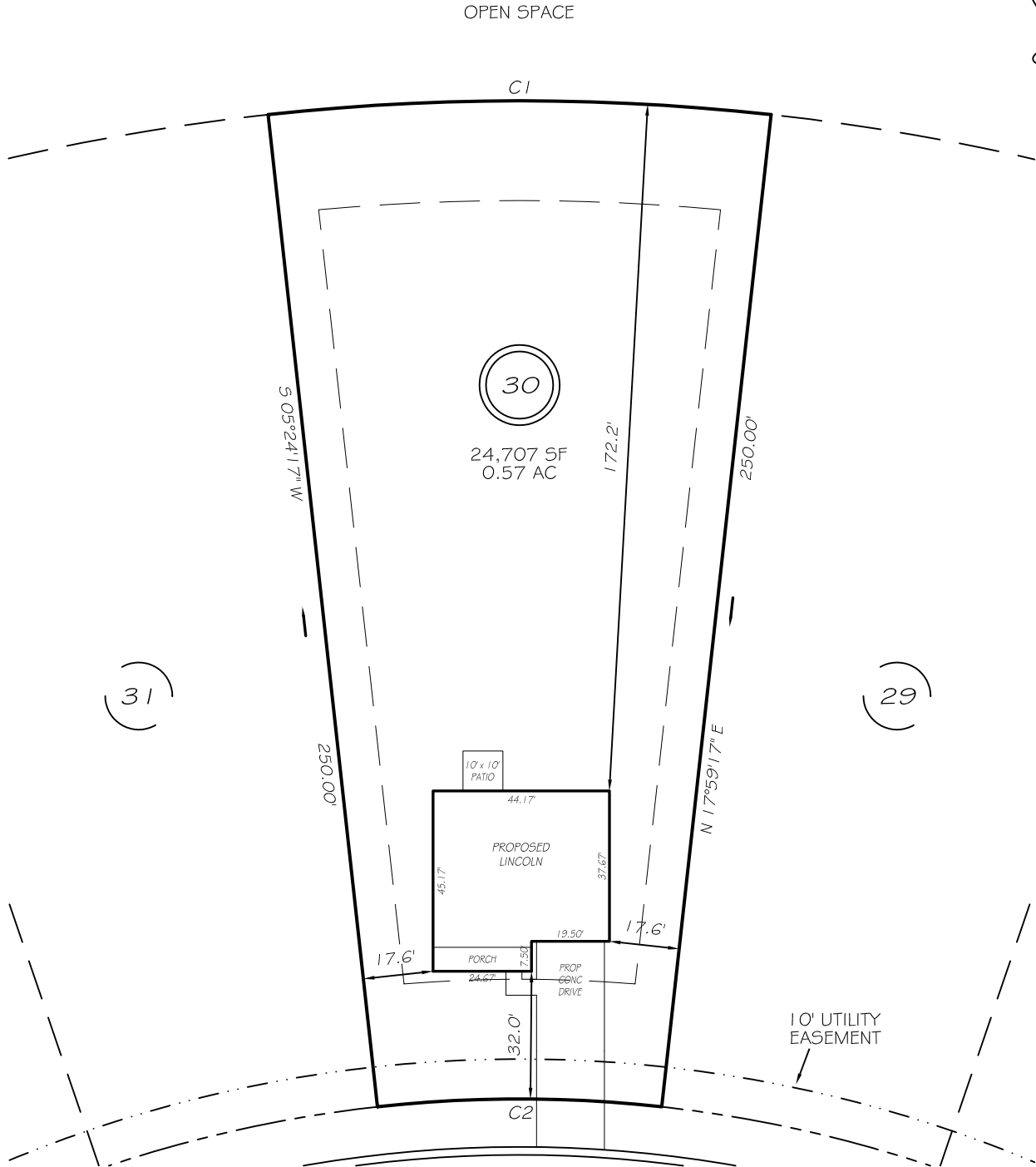


I, MICHAEL P. GRIFFIN, certify that under my direction and supervision this map was drawn from an actual field survey; that the error of closure of the survey as calculated by coordinates is 1: 10,000+; that the area shown hereon was calculated by coordinates. Dashed lines shown hereon were not surveyed.

Witness my hand and seal this day of MONTH 2025.

BK 4249 PGS 3,4  
HOKE CO. REGISTRY



ASHLEY HEIGHTS DRIVE

IMPERVIOUS AREAS

50' PUBLIC RW

HOUSE	1849 SQ. FT.
DRIVE & WALKS	710 SQ. FT.
PATIO	100 SQ. FT.
<b>TOTAL</b>	<b>2659 SQ. FT.</b>
ALLOWED	4000 SQ. FT.



GRAPHIC SCALE  
1"=40'

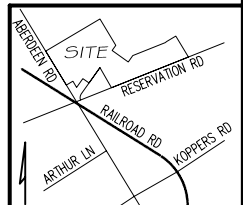
SETBACKS

FRONT	30'
REAR	25'
SIDE	10'

C1 R=575.00' L=126.28' S78°18'13"E 126.03'  
C2 R=325.00' L=71.38' S78°18'13"E 71.23'

LEGEND

EIP	EXISTING IRON PIPE	FES	FLARED END SECTION
RBS	REBAR SET	WM	WATER METER
R/W	RIGHT OF WAY	CO	CLEAN OUT
N/F	NOW OR FORMERLY	FH	FIRE HYDRANT
EIS	EXISTING IRON STAKE	CB	CATCH BASIN



**PRELIMINARY**  
NOT FOR RECORDATION,  
SALES OR CONVEYANCE



**GRIFFIN LAND SURVEYING, INC.**

P. O. BOX 148  
FUQUAY-VARINA, NC 27526  
(919) - 567 - 1963

FIRM LIC.# C-1345

**PLOT PLAN**  
FOR  
**BEN STOUT**  
**CONSTRUCTION**  
ASHLEY HEIGHTS SUBDIVISION

**LOT 30**  
ASHLEY HEIGHTS DRIVE  
ABERDEEN, N.C.  
HOKE COUNTY QUEWHIFFLE TOWNSHIP

DRAWN BY **KDF**

DATE **4/17/25**

CHECKED BY **MPG**

SCALE **1" = 40'**