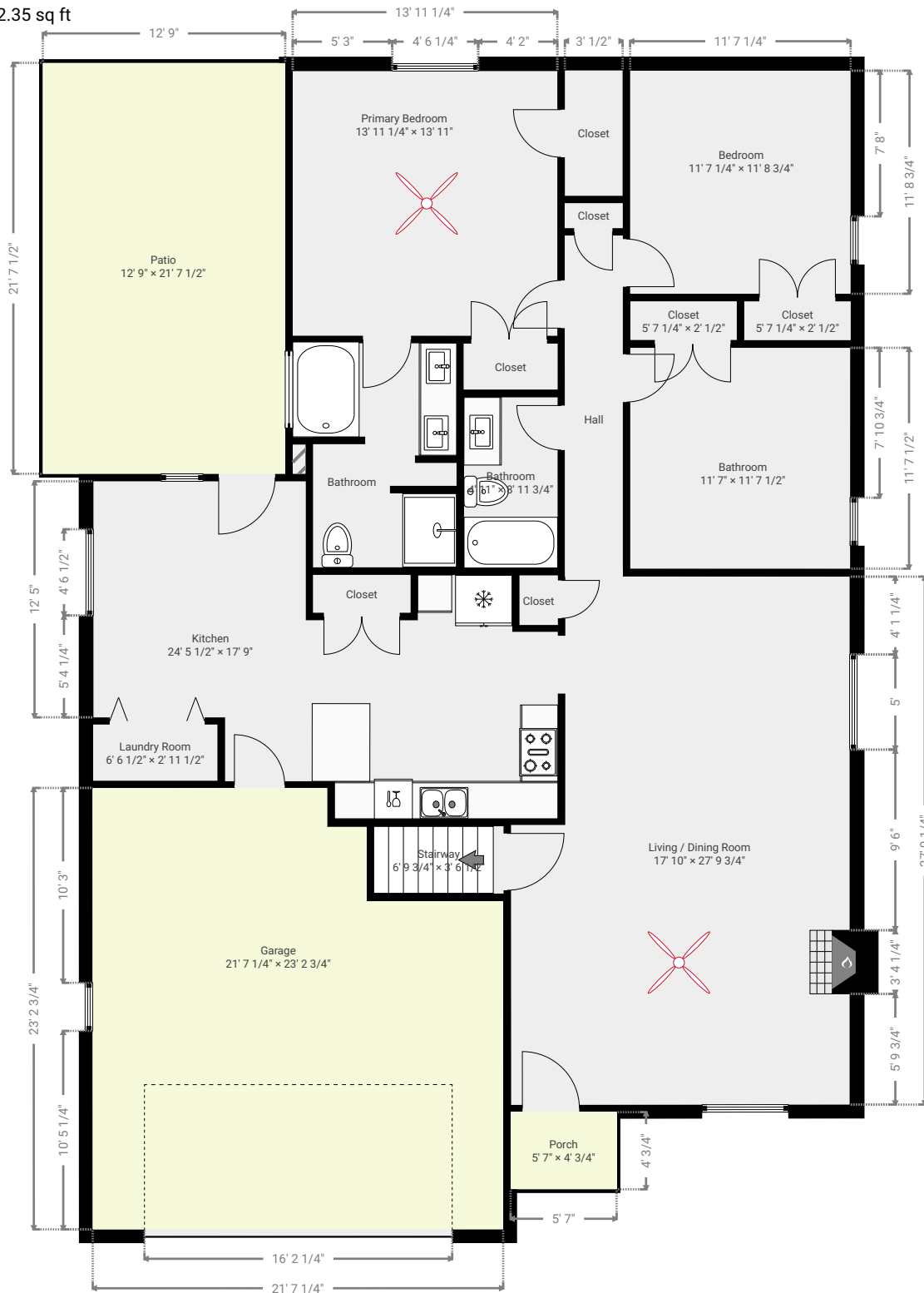


LIVING AREA: 2029.48 sq ft • FLOORS: 2

▼ Ground Floor

LIVING AREA: 1742.35 sq ft

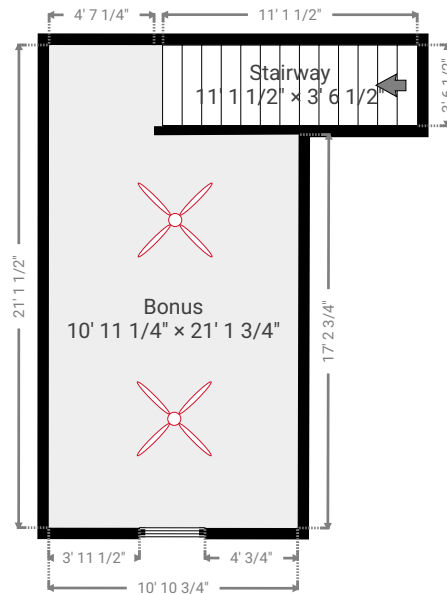


This floor plan is provided without warranty of any kind. Broken Crayon Photography, disclaims any warranty including, without limitation, satisfactory quality or accuracy of dimensions. While we do our best at being accurate, we cannot guarantee square footage calculations. While we are providing measurements and a floor plan ultimately, the real estate agent is responsible to make sure it's accurate. If you see a discrepancy, let us know immediately!

LIVING AREA: 2029.48 sq ft • FLOORS: 2

▼ 2nd Floor

LIVING AREA: 287.13 sq ft

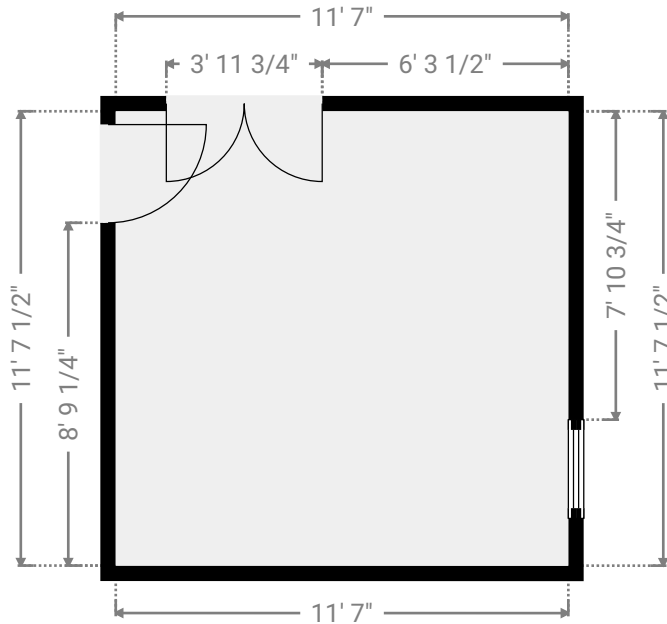
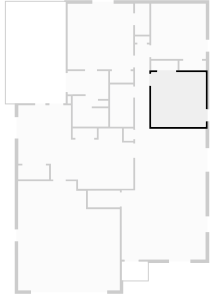


This floor plan is provided without warranty of any kind. Broken Crayon Photography, disclaims any warranty including, without limitation, satisfactory quality or accuracy of dimensions. While we do our best at being accurate, we cannot guarantee square footage calculations. While we are providing measurements and a floor plan ultimately, the real estate agent is responsible to make sure it's accurate. If you see a discrepancy, let us know immediately!

TOTAL AREA: 2802.14 sq ft • LIVING AREA: 2029.48 sq ft • FLOORS: 2

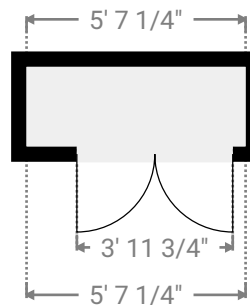
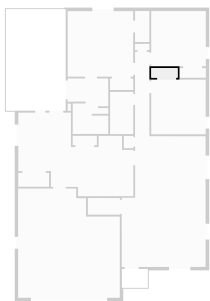
▼ **Bathroom**
Ground Floor

WIDTH: 11' 7" • LENGTH: 11' 7 1/2"
AREA: 134.46 sq ft • PERIMETER: 46' 4 1/2"



▼ **Closet**
Ground Floor

WIDTH: 5' 7 1/4" • LENGTH: 2' 1/2"
AREA: 11.39 sq ft • PERIMETER: 15' 3 1/4"

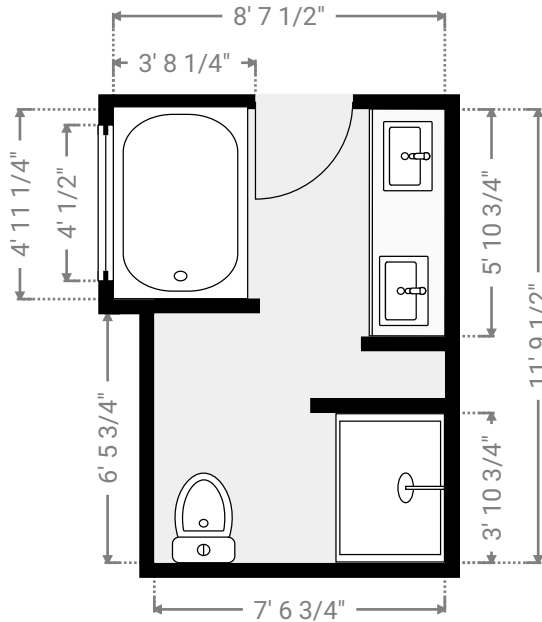
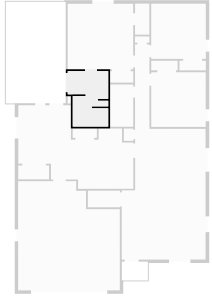


This floor plan is provided without warranty of any kind. Broken Crayon Photography, disclaims any warranty including, without limitation, satisfactory quality or accuracy of dimensions. While we do our best at being accurate, we cannot guarantee square footage calculations. While we are providing measurements and a floor plan ultimately, the real estate agent is responsible to make sure it's accurate. If you see a discrepancy, let us know immediately!

TOTAL AREA: 2802.14 sq ft • LIVING AREA: 2029.48 sq ft • FLOORS: 2

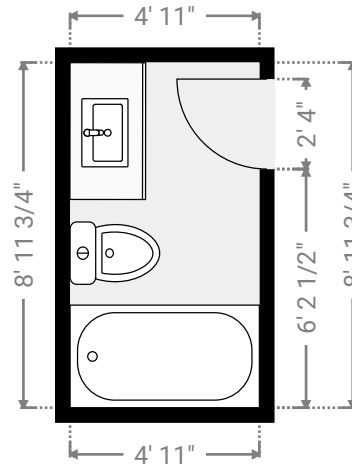
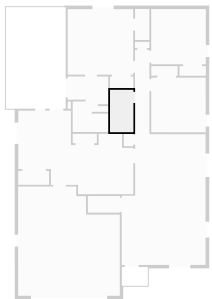
▼ **Bathroom**
Ground Floor

WIDTH: 8' 7 1/2" • LENGTH: 11' 9 1/2"
AREA: 90.96 sq ft • PERIMETER: 57' 9"



▼ **Bathroom**
Ground Floor

WIDTH: 4' 11" • LENGTH: 8' 11 3/4"
AREA: 44.18 sq ft • PERIMETER: 27' 9 1/2"

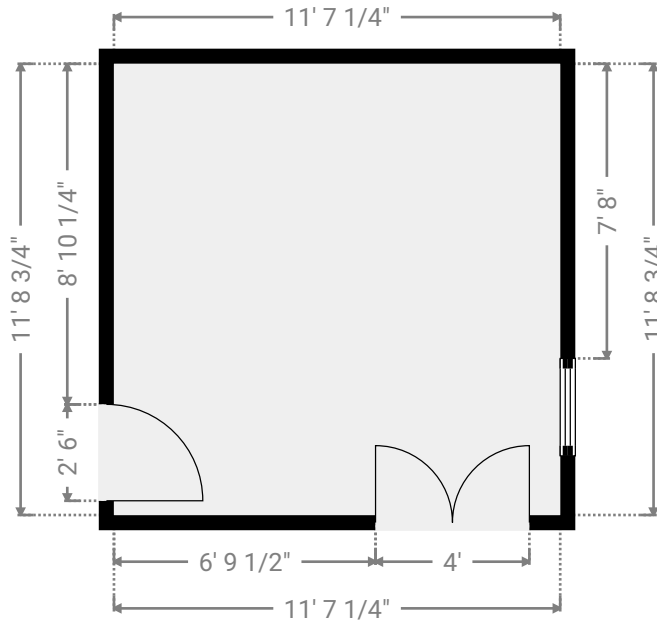
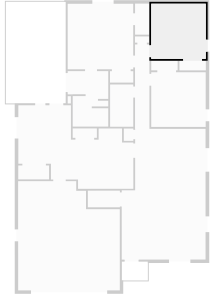


This floor plan is provided without warranty of any kind. Broken Crayon Photography, disclaims any warranty including, without limitation, satisfactory quality or accuracy of dimensions. While we do our best at being accurate, we cannot guarantee square footage calculations. While we are providing measurements and a floor plan ultimately, the real estate agent is responsible to make sure it's accurate. If you see a discrepancy, let us know immediately!

TOTAL AREA: 2802.14 sq ft • LIVING AREA: 2029.48 sq ft • FLOORS: 2

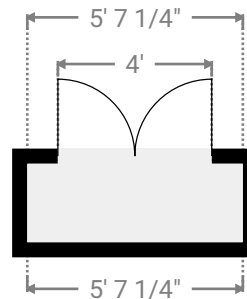
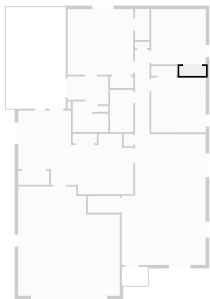
▼ **Bedroom**
Ground Floor

WIDTH: 11' 7 1/4" • LENGTH: 11' 8 3/4"
AREA: 136.17 sq ft • PERIMETER: 46' 8"



▼ **Closet**
Ground Floor

WIDTH: 5' 7 1/4" • LENGTH: 2' 1/2"
AREA: 11.44 sq ft • PERIMETER: 15' 3 1/2"

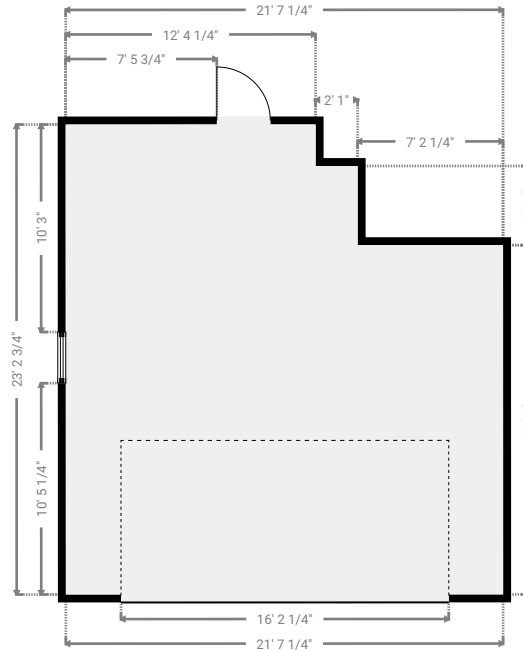
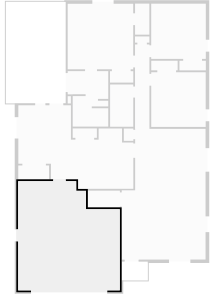


This floor plan is provided without warranty of any kind. Broken Crayon Photography, disclaims any warranty including, without limitation, satisfactory quality or accuracy of dimensions. While we do our best at being accurate, we cannot guarantee square footage calculations. While we are providing measurements and a floor plan ultimately, the real estate agent is responsible to make sure it's accurate. If you see a discrepancy, let us know immediately!

TOTAL AREA: 2802.14 sq ft • LIVING AREA: 2029.48 sq ft • FLOORS: 2

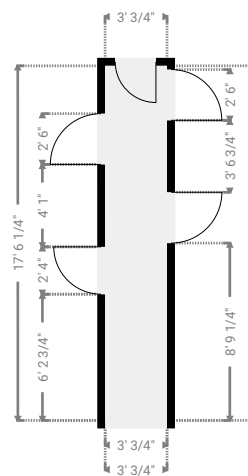
▼ **Garage**
Ground Floor

WIDTH: 21' 7 1/4" • LENGTH: 23' 2 3/4"
AREA: 454.65 sq ft • PERIMETER: 89' 8"



▼ **Hall**
Ground Floor

WIDTH: 3' 3/4" • LENGTH: 17' 6 1/4"
AREA: 53.61 sq ft • PERIMETER: 41' 2"

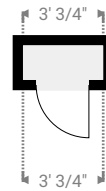
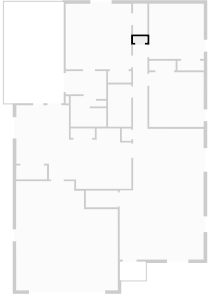


This floor plan is provided without warranty of any kind. Broken Crayon Photography, disclaims any warranty including, without limitation, satisfactory quality or accuracy of dimensions. While we do our best at being accurate, we cannot guarantee square footage calculations. While we are providing measurements and a floor plan ultimately, the real estate agent is responsible to make sure it's accurate. If you see a discrepancy, let us know immediately!

TOTAL AREA: 2802.14 sq ft • LIVING AREA: 2029.48 sq ft • FLOORS: 2

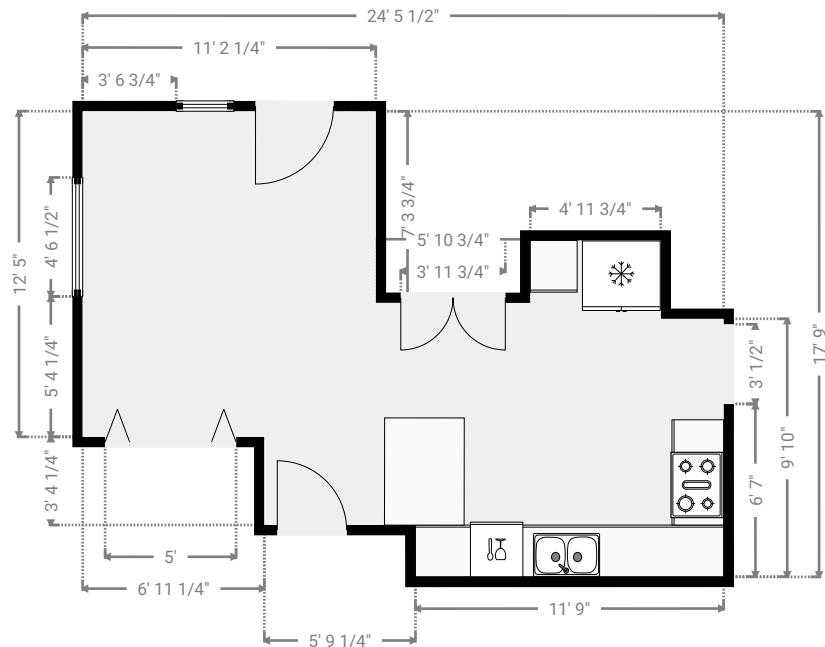
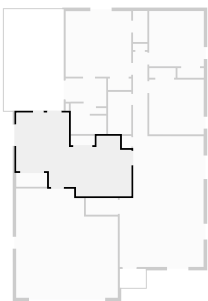
▼ **Closet**
Ground Floor

WIDTH: 3' 3/4" • LENGTH: 1' 3 3/4"
AREA: 4.02 sq ft • PERIMETER: 8' 9"



▼ **Kitchen**
Ground Floor

WIDTH: 24' 5 1/2" • LENGTH: 17' 9"
AREA: 299.03 sq ft • PERIMETER: 89' 1 3/4"

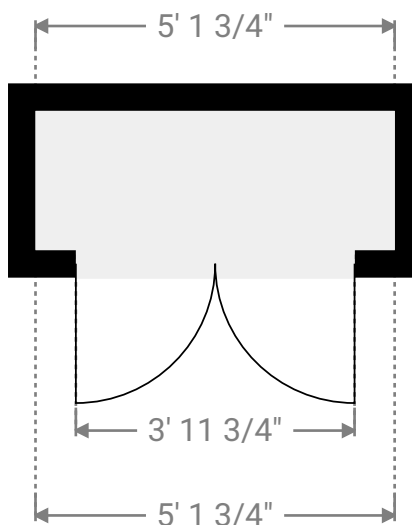
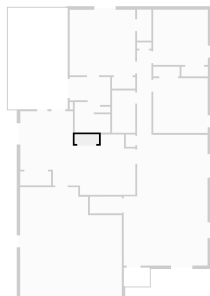


This floor plan is provided without warranty of any kind. Broken Crayon Photography, disclaims any warranty including, without limitation, satisfactory quality or accuracy of dimensions. While we do our best at being accurate, we cannot guarantee square footage calculations. While we are providing measurements and a floor plan ultimately, the real estate agent is responsible to make sure it's accurate. If you see a discrepancy, let us know immediately!

TOTAL AREA: 2802.14 sq ft • LIVING AREA: 2029.48 sq ft • FLOORS: 2

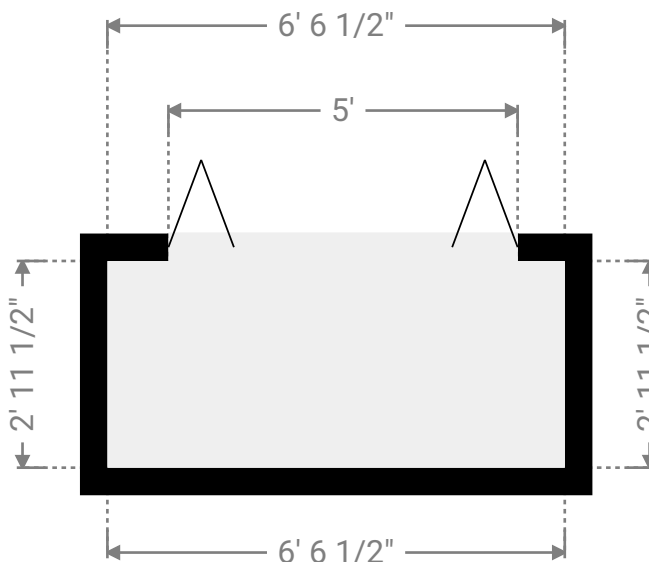
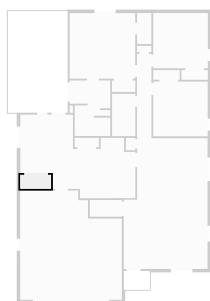
▼ **Closet**
Ground Floor

WIDTH: 5' 1 3/4" • LENGTH: 1' 11 3/4"
AREA: 10.22 sq ft • PERIMETER: 14' 3"



▼ **Laundry Room**
Ground Floor

WIDTH: 6' 6 1/2" • LENGTH: 2' 11 1/2"
AREA: 19.34 sq ft • PERIMETER: 19'

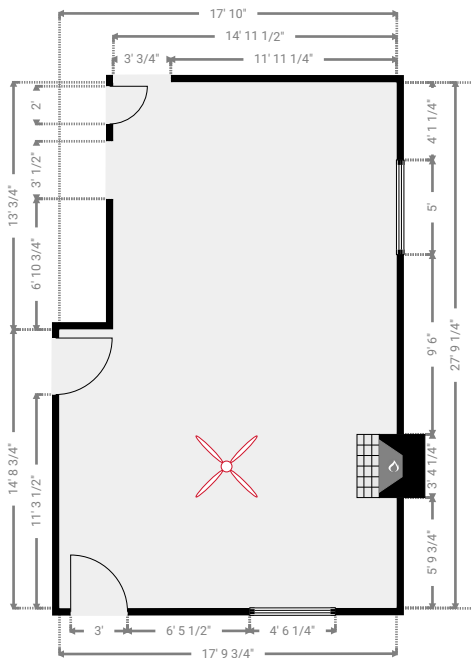
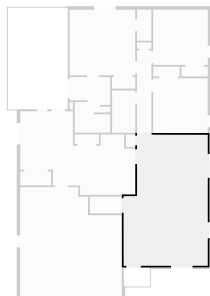


This floor plan is provided without warranty of any kind. Broken Crayon Photography, disclaims any warranty including, without limitation, satisfactory quality or accuracy of dimensions. While we do our best at being accurate, we cannot guarantee square footage calculations. While we are providing measurements and a floor plan ultimately, the real estate agent is responsible to make sure it's accurate. If you see a discrepancy, let us know immediately!

TOTAL AREA: 2802.14 sq ft • LIVING AREA: 2029.48 sq ft • FLOORS: 2

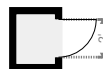
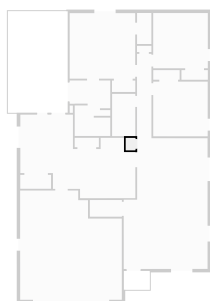
▼ Living / Dining Room
Ground Floor

WIDTH: 17' 10" • LENGTH: 27' 9 3/4"
AREA: 457.90 sq ft • PERIMETER: 91' 2 1/2"



▼ Closet
Ground Floor

WIDTH: 2' 1/4" • LENGTH: 2' 7 1/4"
AREA: 5.27 sq ft • PERIMETER: 9' 3"

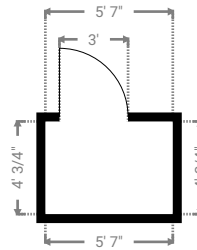


This floor plan is provided without warranty of any kind. Broken Crayon Photography, disclaims any warranty including, without limitation, satisfactory quality or accuracy of dimensions. While we do our best at being accurate, we cannot guarantee square footage calculations. While we are providing measurements and a floor plan ultimately, the real estate agent is responsible to make sure it's accurate. If you see a discrepancy, let us know immediately!

TOTAL AREA: 2802.14 sq ft • LIVING AREA: 2029.48 sq ft • FLOORS: 2

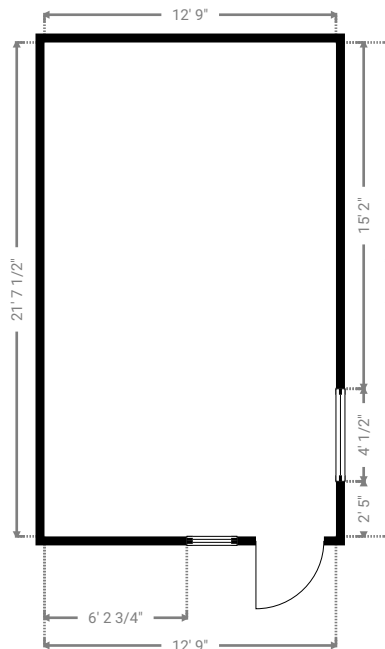
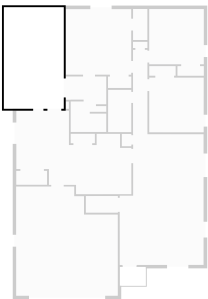
▼ **Porch**
Ground Floor

WIDTH: 5' 7" • LENGTH: 4' 3/4"
AREA: 22.64 sq ft • PERIMETER: 19' 3 1/4"



▼ **Patio**
Ground Floor

WIDTH: 12' 9" • LENGTH: 21' 7 1/2"
AREA: 275.86 sq ft • PERIMETER: 68' 9"

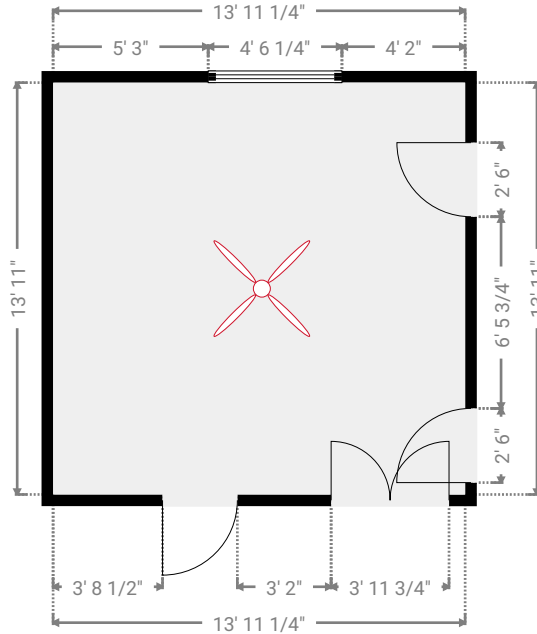


This floor plan is provided without warranty of any kind. Broken Crayon Photography, disclaims any warranty including, without limitation, satisfactory quality or accuracy of dimensions. While we do our best at being accurate, we cannot guarantee square footage calculations. While we are providing measurements and a floor plan ultimately, the real estate agent is responsible to make sure it's accurate. If you see a discrepancy, let us know immediately!

TOTAL AREA: 2802.14 sq ft • LIVING AREA: 2029.48 sq ft • FLOORS: 2

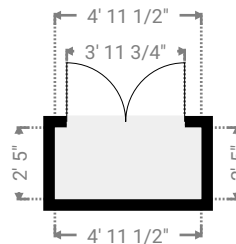
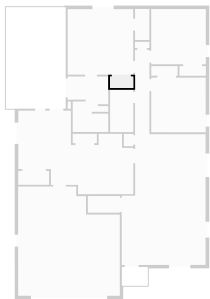
▼ **Primary Bedroom**
Ground Floor

WIDTH: 13' 11 1/4" • LENGTH: 13' 11"
AREA: 193.96 sq ft • PERIMETER: 55' 8 1/2"



▼ **Closet**
Ground Floor

WIDTH: 4' 11 1/2" • LENGTH: 2' 5"
AREA: 11.95 sq ft • PERIMETER: 14' 8 3/4"

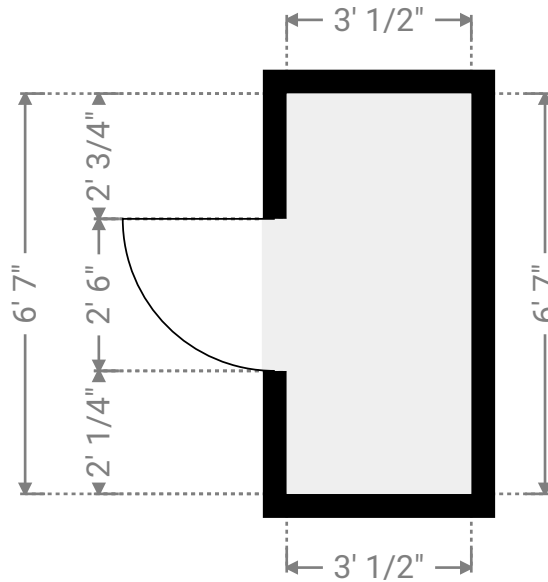


This floor plan is provided without warranty of any kind. Broken Crayon Photography, disclaims any warranty including, without limitation, satisfactory quality or accuracy of dimensions. While we do our best at being accurate, we cannot guarantee square footage calculations. While we are providing measurements and a floor plan ultimately, the real estate agent is responsible to make sure it's accurate. If you see a discrepancy, let us know immediately!

TOTAL AREA: 2802.14 sq ft • LIVING AREA: 2029.48 sq ft • FLOORS: 2

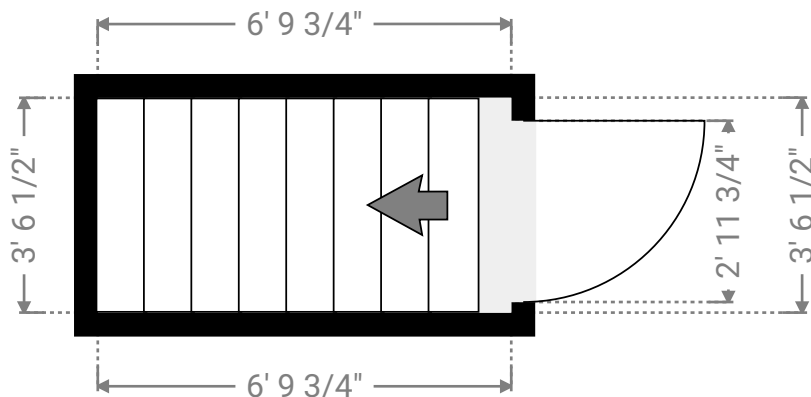
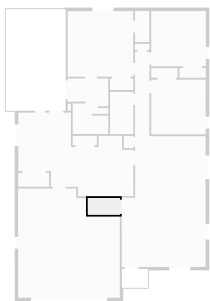
▼ **Closet**
Ground Floor

WIDTH: 3' 1/2" • LENGTH: 6' 7"
AREA: 20.04 sq ft • PERIMETER: 19' 3 1/4"



▼ **Stairway**
Ground Floor

WIDTH: 6' 9 3/4" • LENGTH: 3' 6 1/2"
AREA: 24.10 sq ft • PERIMETER: 20' 8 1/2"



This floor plan is provided without warranty of any kind. Broken Crayon Photography, disclaims any warranty including, without limitation, satisfactory quality or accuracy of dimensions. While we do our best at being accurate, we cannot guarantee square footage calculations. While we are providing measurements and a floor plan ultimately, the real estate agent is responsible to make sure it's accurate. If you see a discrepancy, let us know immediately!

