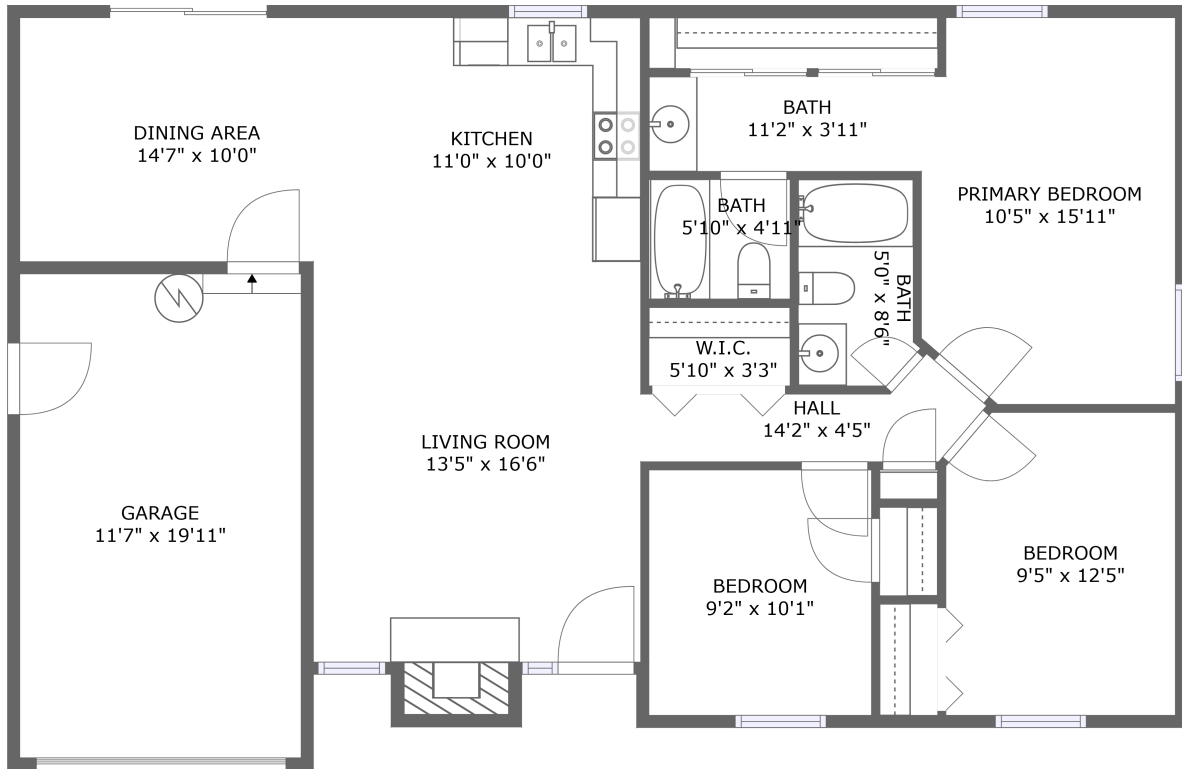


Home report

600 Foxfire Circle, Deerfield, Half Moon, Jacksonville, Onslow County, North Carolina, United States, 28546



FLOOR 1


Total GLA: 1185 sq. ft

Floor 1: 1185 sq. ft

Excluded: Garage 249 sq. ft, Fireplace 12 sq. ft

Property summary

 **1** Floors

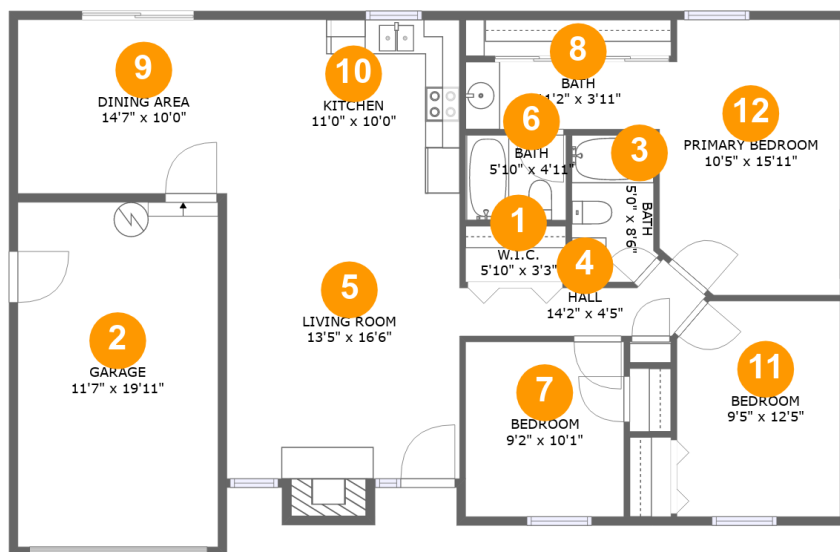
 **3** Bedrooms

 **2** Bathrooms

 **1** Garages

Home report

600 Foxfire Circle, Deerfield, Half Moon, Jacksonville, Onslow County, North Carolina, United States, 28546



Room dimensions

Floor 1

Total: 1185sqft

Excluded: 261sqft

#		Max Dimensions	sqft	Included
1	W.I.C.	5'10" x 3'3"	19 sq. ft	Yes
2	Garage	11'7" x 19'11"	230 sq. ft	No
3	Bath	5'0" x 8'6"	40 sq. ft	Yes
4	Hall	14'2" x 4'5"	40 sq. ft	Yes
5	Living Room	13'5" x 16'6"	231 sq. ft	Yes
6	Bath	5'10" x 4'11"	29 sq. ft	Yes
7	Bedroom	9'2" x 10'1"	92 sq. ft	Yes
8	Bath	11'2" x 3'11"	44 sq. ft	Yes
9	Dining Area	14'7" x 10'0"	146 sq. ft	Yes
10	Kitchen	11'0" x 10'0"	110 sq. ft	Yes
11	Bedroom	9'5" x 12'5"	115 sq. ft	Yes

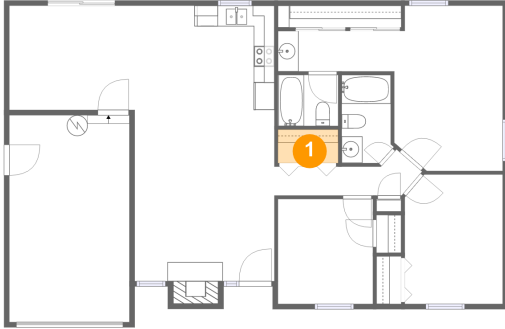
Home report

600 Foxfire Circle, Deerfield, Half Moon, Jacksonville, Onslow County, North Carolina, United States, 28546

#		Max Dimensions	sqft	Included
12	Primary Bedroom	10'5" x 15'11"	159 sq. ft	Yes

600 Foxfire Circle, Deerfield, Half Moon, Jacksonville, Onslow County, North Carolina, United States, 28546

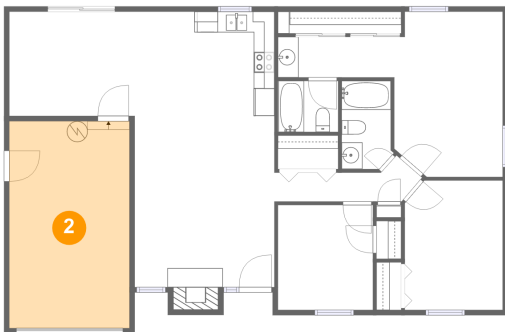
1 Floor 1 - W.I.C.



Max Dimensions: 5'10" x 3'3"
Calculated Area: 19 sq. ft
Included: Yes

Heated: Yes
Finished: Yes
Enclosed: Yes
Contiguous: Yes
Permitted: Yes
Wet space: No
Addition: No
Conversion: No

2 Floor 1 - Garage

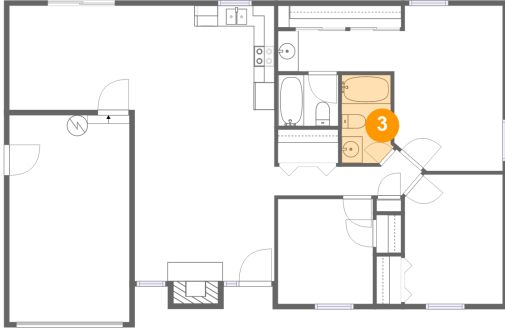


Max Dimensions: 11'7" x 19'11"
Calculated Area: 230 sq. ft
Included: No

Heated: No
Finished: No
Enclosed: Yes
Contiguous: Yes
Permitted: Yes
Wet space: No
Addition: No
Conversion: No

600 Foxfire Circle, Deerfield, Half Moon, Jacksonville, Onslow County, North Carolina, United States, 28546

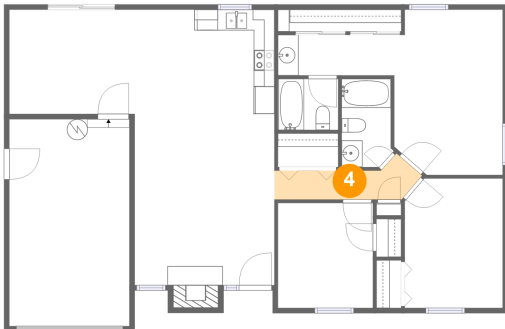
3 Floor 1 - Bath



Max Dimensions: 5'0" x 8'6"
Calculated Area: 40 sq. ft
Included: Yes

Heated: Yes
Finished: Yes
Enclosed: Yes
Contiguous: Yes
Permitted: Yes
Wet space: Yes
Addition: No
Conversion: No

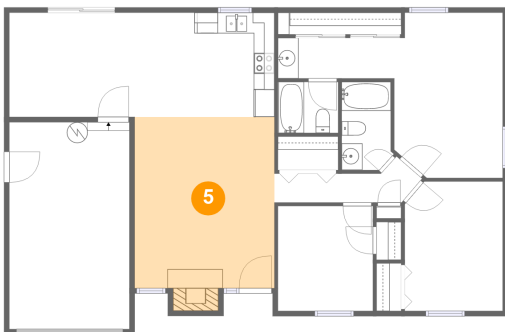
4 Floor 1 - Hall



Max Dimensions: 14'2" x 4'5"
Calculated Area: 40 sq. ft
Included: Yes

Heated: Yes
Finished: Yes
Enclosed: Yes
Contiguous: Yes
Permitted: Yes
Wet space: No
Addition: No
Conversion: No

5 Floor 1 - Living Room

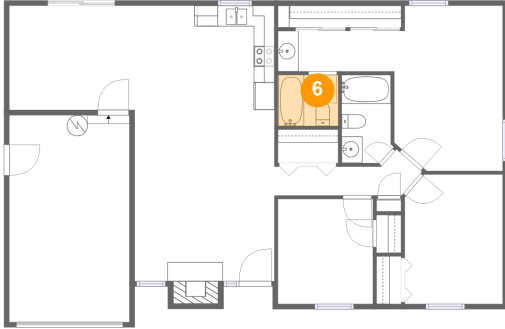


Max Dimensions: 13'5" x 16'6"
Calculated Area: 231 sq. ft
Included: Yes

Heated: Yes
Finished: Yes
Enclosed: Yes
Contiguous: Yes
Permitted: Yes
Wet space: No
Addition: No
Conversion: No

600 Foxfire Circle, Deerfield, Half Moon, Jacksonville, Onslow County, North Carolina, United States, 28546

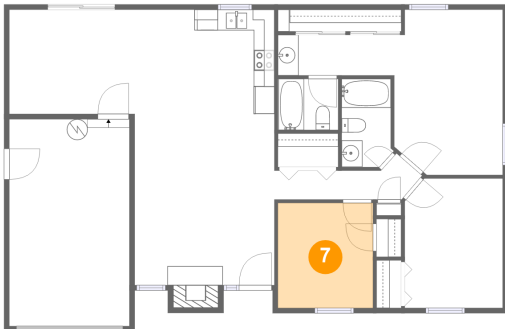
6 Floor 1 - Bath



Max Dimensions: 5'10" x 4'11"
Calculated Area: 29 sq. ft
Included: Yes

Heated: Yes
Finished: Yes
Enclosed: Yes
Contiguous: Yes
Permitted: Yes
Wet space: Yes
Addition: No
Conversion: No

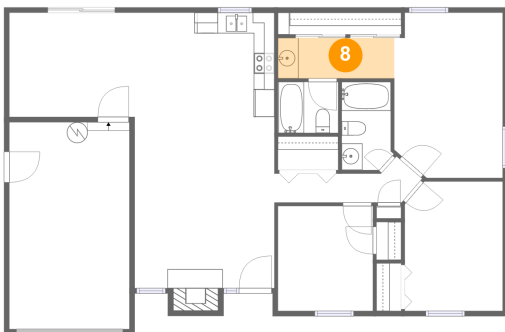
7 Floor 1 - Bedroom



Max Dimensions: 9'2" x 10'1"
Calculated Area: 92 sq. ft
Included: Yes

Heated: Yes
Finished: Yes
Enclosed: Yes
Contiguous: Yes
Permitted: Yes
Wet space: No
Addition: No
Conversion: No

8 Floor 1 - Bath

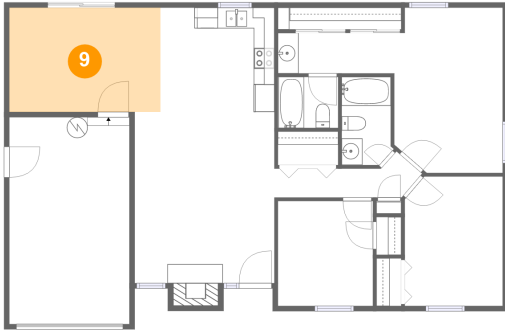


Max Dimensions: 11'2" x 3'11"
Calculated Area: 44 sq. ft
Included: Yes

Heated: Yes
Finished: Yes
Enclosed: Yes
Contiguous: Yes
Permitted: Yes
Wet space: Yes
Addition: No
Conversion: No

600 Foxfire Circle, Deerfield, Half Moon, Jacksonville, Onslow County, North Carolina, United States, 28546

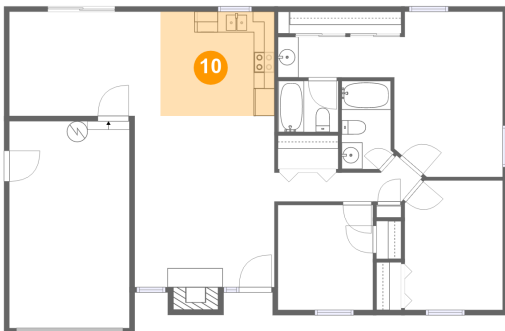
9 Floor 1 - Dining Area



Max Dimensions: 14'7" x 10'0"
Calculated Area: 146 sq. ft
Included: Yes

Heated: Yes
Finished: Yes
Enclosed: Yes
Contiguous: Yes
Permitted: Yes
Wet space: No
Addition: No
Conversion: No

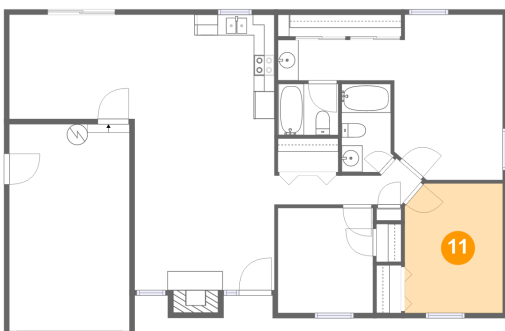
10 Floor 1 - Kitchen



Max Dimensions: 11'0" x 10'0"
Calculated Area: 110 sq. ft
Included: Yes

Heated: Yes
Finished: Yes
Enclosed: Yes
Contiguous: Yes
Permitted: Yes
Wet space: No
Addition: No
Conversion: No

11 Floor 1 - Bedroom



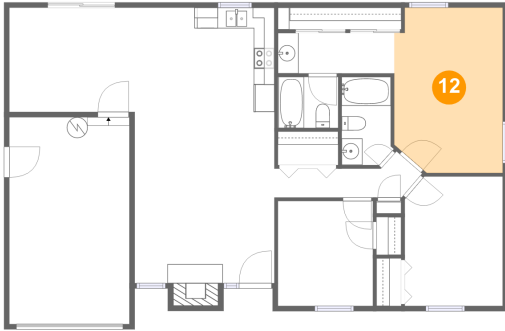
Max Dimensions: 9'5" x 12'5"
Calculated Area: 115 sq. ft
Included: Yes

Heated: Yes
Finished: Yes
Enclosed: Yes
Contiguous: Yes
Permitted: Yes
Wet space: No
Addition: No
Conversion: No

Home report

600 Foxfire Circle, Deerfield, Half Moon, Jacksonville, Onslow
County, North Carolina, United States, 28546

12 Floor 1 - Primary Bedroom



Max Dimensions: 10'5" x
15'11"
Calculated Area: 159 sq. ft
Included: Yes

Heated: Yes
Finished: Yes
Enclosed: Yes
Contiguous:
Yes
Permitted: Yes
Wet space: No
Addition: No
Conversion: No