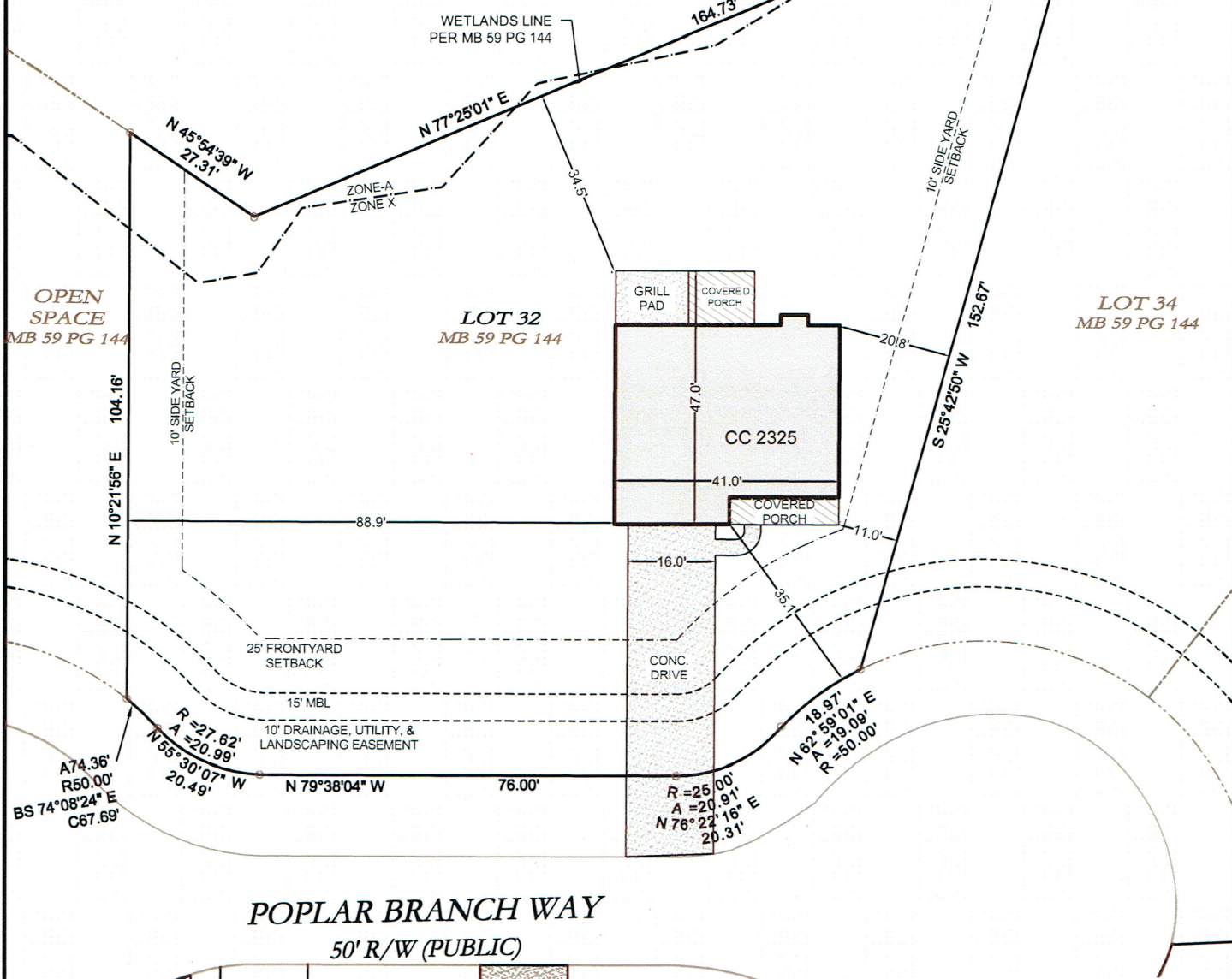


JOHNSON JAMES E JR  
DB 412 PG 533



POPLAR BRANCH WAY  
50' R/W (PUBLIC)

LOT DATA  
4236-65-3134-0000  
POPLAR BRANCH WAY (LOT 32)  
ZONED RP  
DB 4098 PG 154

LOT AREA = 18,812 SQ. FT. OR 0.43± ACRE

IMPERVIOUS SURFACE AREA FOR THIS LOT = 2,784± SQ. FT.  
HOUSE = 1,427± SQ. FT.  
CONCRETE DRIVE & SIDEWALK = 1,004± SQ. FT.  
FRONT PORCH = 100± SQ. FT.  
BACK PORCH = 120± SQ. FT.  
GRILL PAD = 133± SQ. FT.

MAXIMUM IMPERVIOUS ALLOWED = 3,300 SQ. FT.  
RECOMBINED LOT MAX IMPERVIOUS MAY = 6,600 SQ. FT CHECK WITH  
STORM WATER PERMIT.

PORTIONS OF THIS PARCEL ARE AFFECTED BY ZONE "A" SPECIAL  
FLOOD HAZARD ZONE ACCORDING TO FEMA FLOOD PANEL  
3720423600K, DATED FEBRUARY 16, 2007.



*Christopher James Gagne*  
SEAL  
LAND SURVEYOR  
L-4700  
9/11/17



SCALE: 1"=30'

REVISED 080317

POPLAR BRANCH, SECTION IIB

**PARAMOUNTE**  
ENGINEERING, INC.  
122 Cinema Drive, NC, 28403 - 910-791-6707 - NC License #: C-2846

Date :	08/03/17
Scale:	1"=30'
Drawn :	CJG
Chk:	CGJ
Proj. No:	14225.PE-32

PLOT PLAN  
LOT 32  
POPLAR BRANCH WAY  
TOPSAIL TOWNSHIP  
PENDER COUNTY, NC