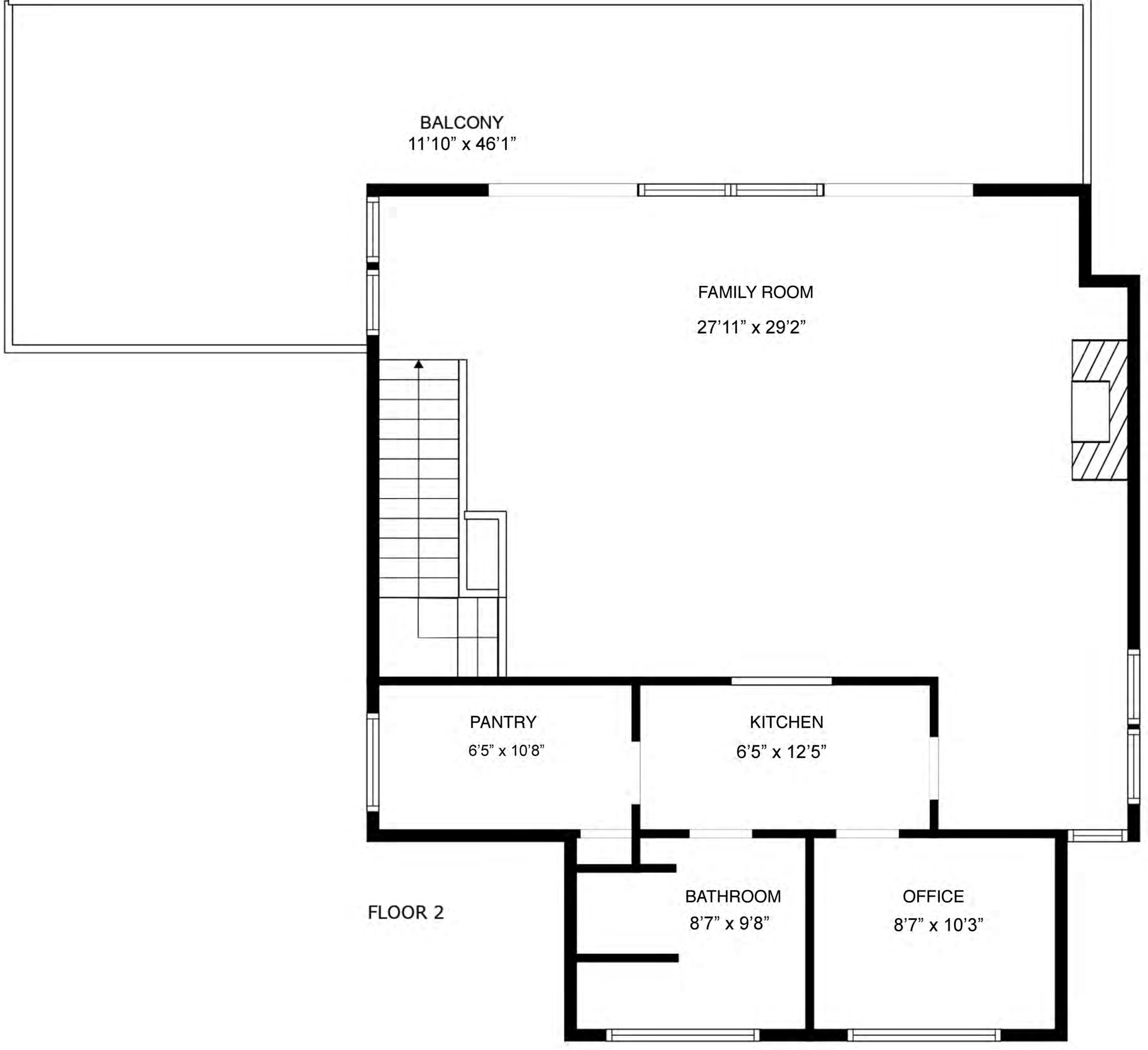
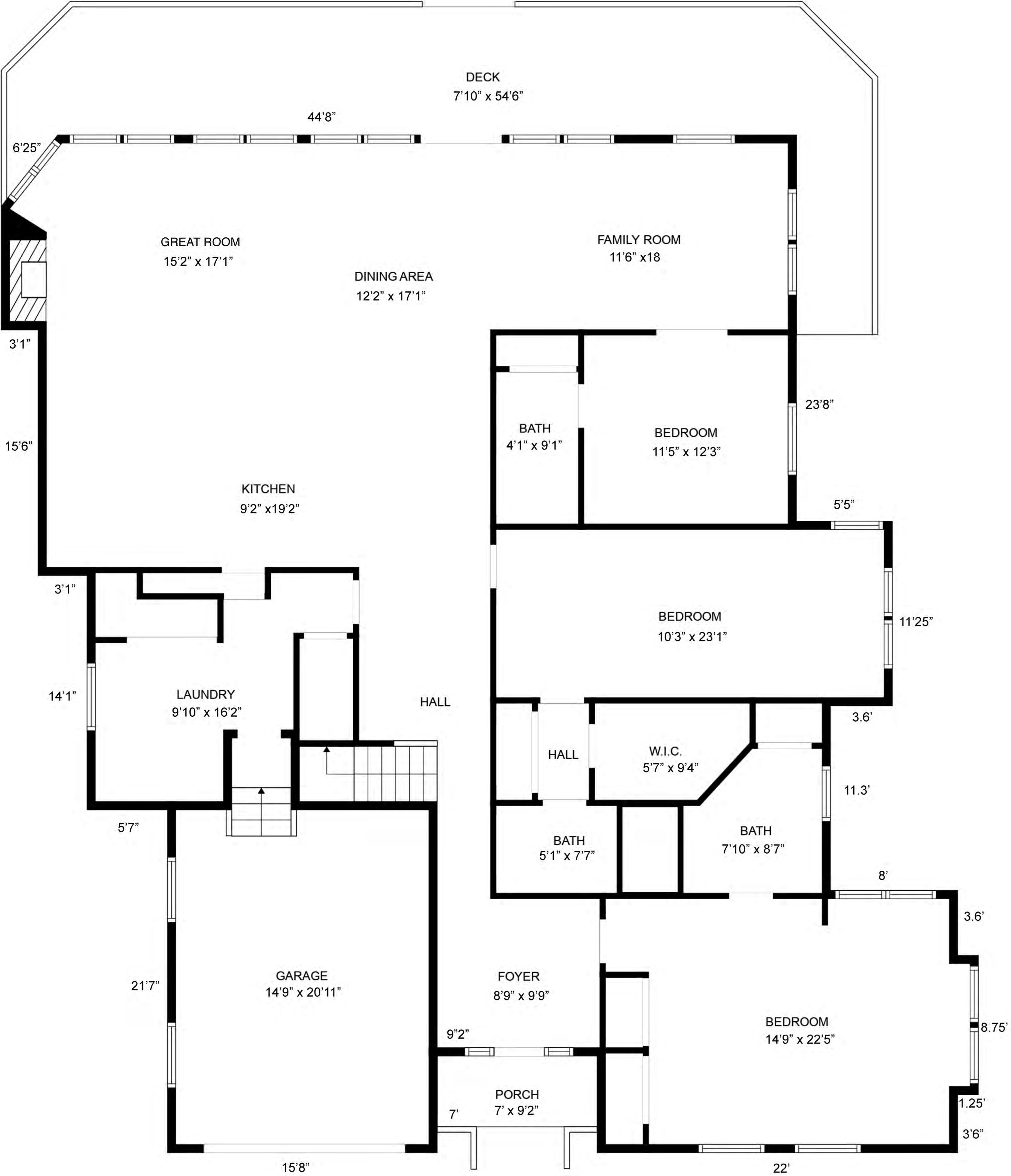


**516 W Brunswick St  
Southport, NC 28461**



**Total Heated: 3509 sq ft.**  
**Floor 1: 2396 sq ft. Floor 2: 1113 sq ft.**  
 Excluded Areas: Garage: 354 sq ft. Shed: 318 sq ft.

Table 1

516 W Brunswick St Southport		
<b>First Floor</b>	2396	
<b>Second Floor</b>	1113	
<b>Total Heated Sq Ft</b>	<b>3509</b>	
<b>Garage Sq Ft</b>	354	
<b>Total Sq Ft</b>	<b>3863</b>	
<b>Shed</b>	12.25 x 26	
<b>Deck</b>	7.8 x 54.5	
<b>Balcony</b>	14.8 x 46.1	
<b>Notes</b>		