

[Tax Card](#)

[Fire Hydrant/District](#)

Maps  
(including  
Flood) Other

(if no link, still under  
construction)

**Pasquotank County Property Card**

(click [HERE](#) for previous version)

**PIN: 890302991721**

**MAP: P120-257**

**Deed Book: 723 / Deed Page: 354 / Date: 20020628**

**Location: 01732**

**ULSTER DR**

**Prior  
Evaluation  
Year: 2006**

**Current  
Evaluation  
Year: 2014**

**POLLACK, VINCENT  
P & IRENE V  
1732 ULSTER DR**

<b>Land</b>	\$30200	\$30200
<b>Use Land</b>	\$0	\$0
<b>Building</b>	\$170500	\$186800
<b>Total</b>	\$200700	\$217000
<b>Assessed</b>	\$200700	\$217000

**ELIZABETH CITY,  
NC 27909**

Acct: 0050203

**Estimated County Tax:  
\$1670.9**



**Notes**

Click on any thumbnail for a full size map.

[Pasquotank Interactive GIS Map](#)

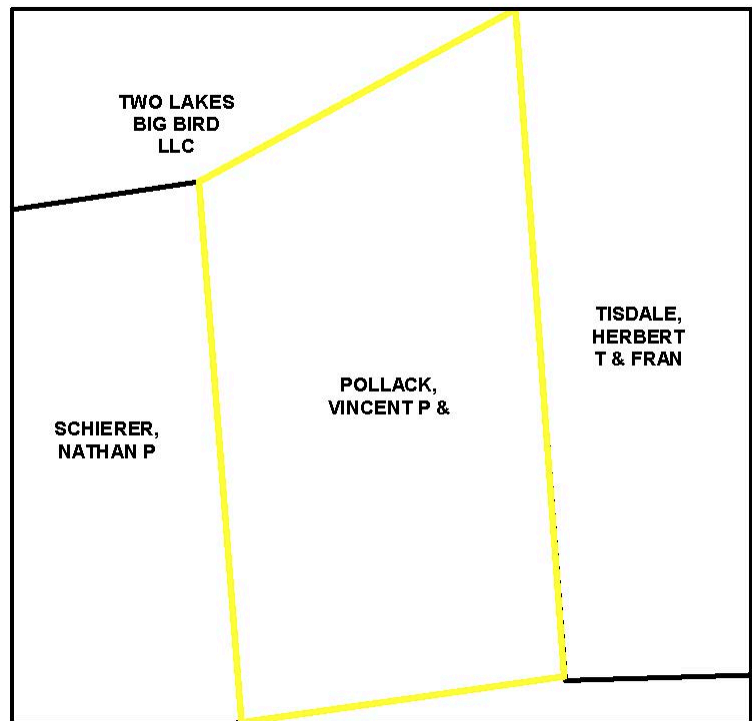
**Aerial Map**



890302991721

**Aerial**

P120-257

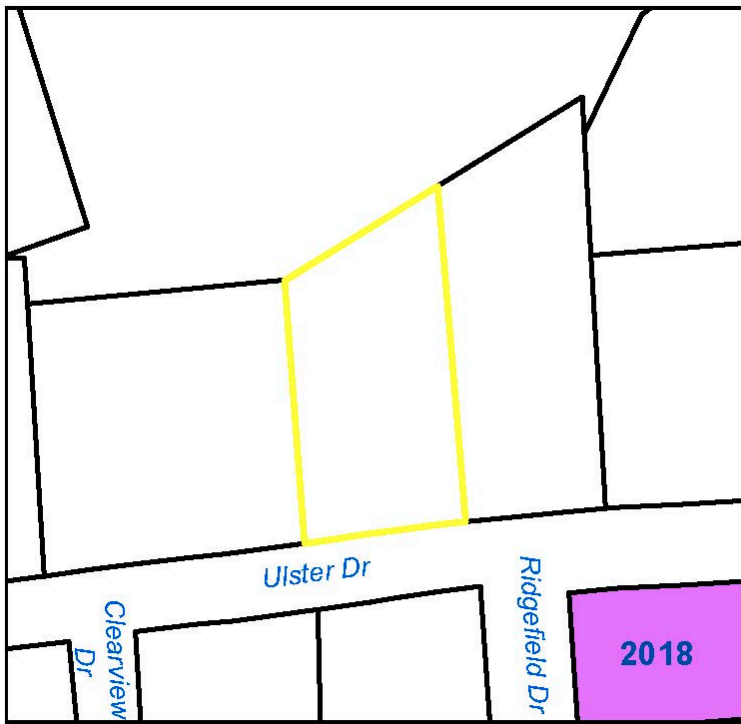


890302991721

**Neighbors**

P120-257

Nearby Sales

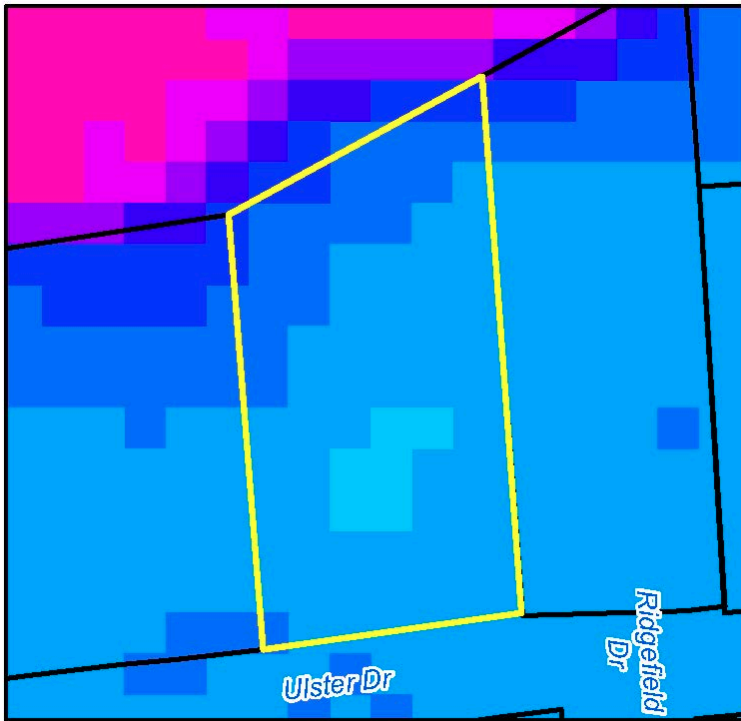


890302991721

Sales

P120-257

Elevation

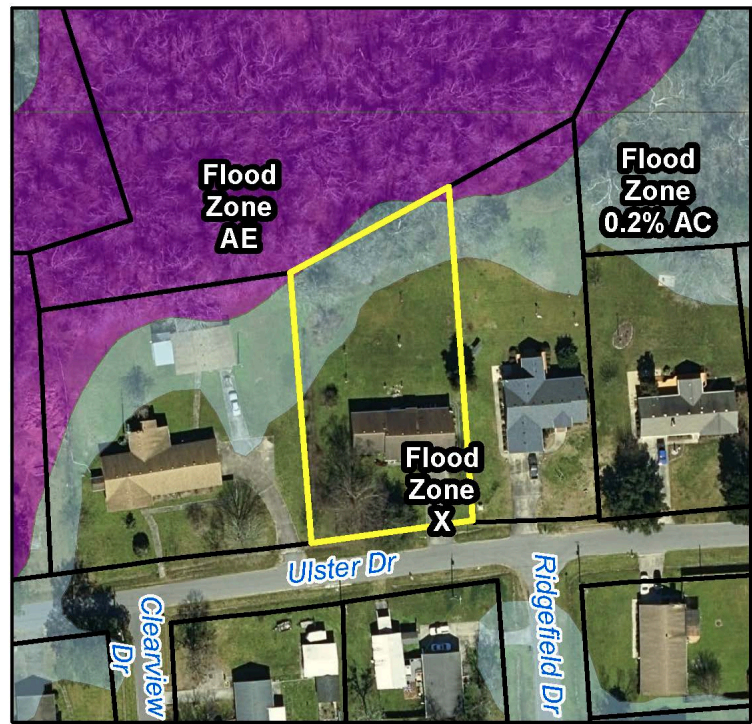


890302991721

Elevation

P120-257

Flood Maps - effective Dec 21, 2018



890302991721

Flood Zone

P120-257

Zoning

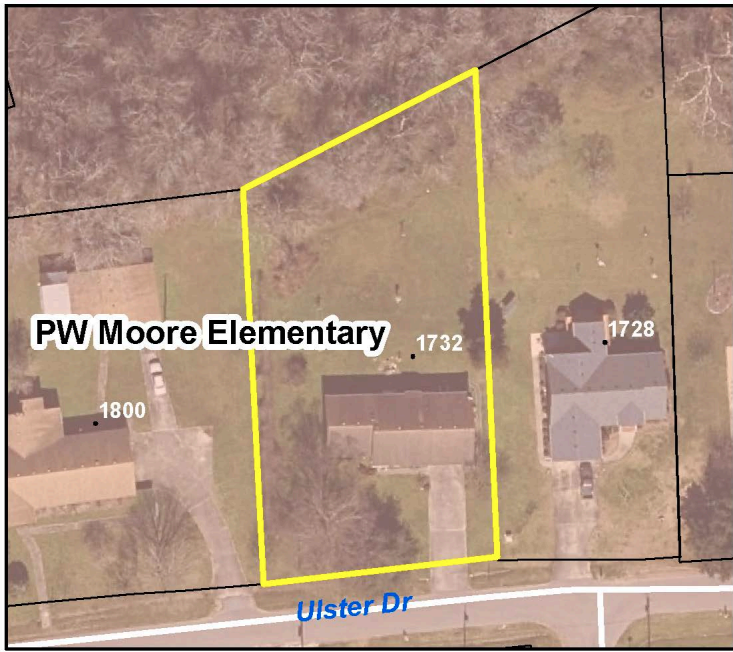


890302991721

Zoning

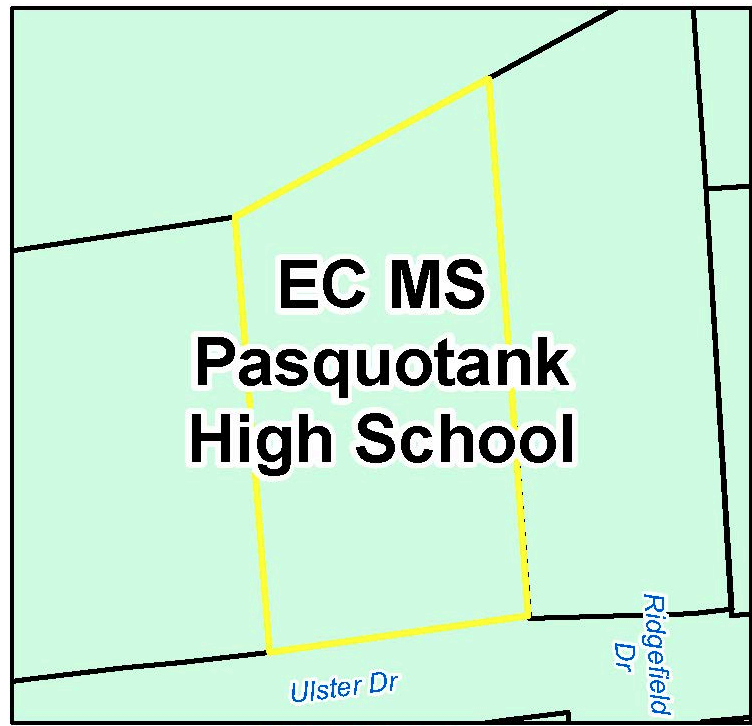
P120-257

Elementary School Attendance Zone



890302991721

This is for informational purposes only.  
ECPPS has final authority on district lines.



890302991721

Middle/High School

P120-257

## Historic Imagery

[1996](#)

[2003](#)

[2003 Post-Isabel](#)

[2008](#)

[2010](#)

[2012](#)

[2016](#)