



# TUCKER HILL FARM

## HOMESITE 45

2908 Tucker Hill Drive  
Grimesland, NC

### THE DOGWOOD HOMEPLAN

ELEVATION C

1,863 SQFT | 3 BR | 2 BA | 2 CAR GARAGE



\*Artistic Rendering not lot specific.  
For representation purposes only.



0.58 ACRE

Discover the charm of Tucker Hill Farm! Nestled just off Tucker Road, this exclusive enclave of only 55 homes offers spacious homesites—some spanning over an acre—giving you room to breathe while staying just 15 minutes from the vibrant shopping, dining, and entertainment of Uptown Greenville.

Here, you'll find expertly designed home plans, superior craftsmanship, and the quality you expect—all backed by the signature Caviness & Cates 1-2-10 year in-house warranty. Escape the hustle and bustle without sacrificing convenience—Tucker Hill Farm is waiting to welcome you home!

### NEW HOME SPECIALISTS

910.405.8311

info@cavinessandcates.com



Photos, Options,  
Virtual Tours & More

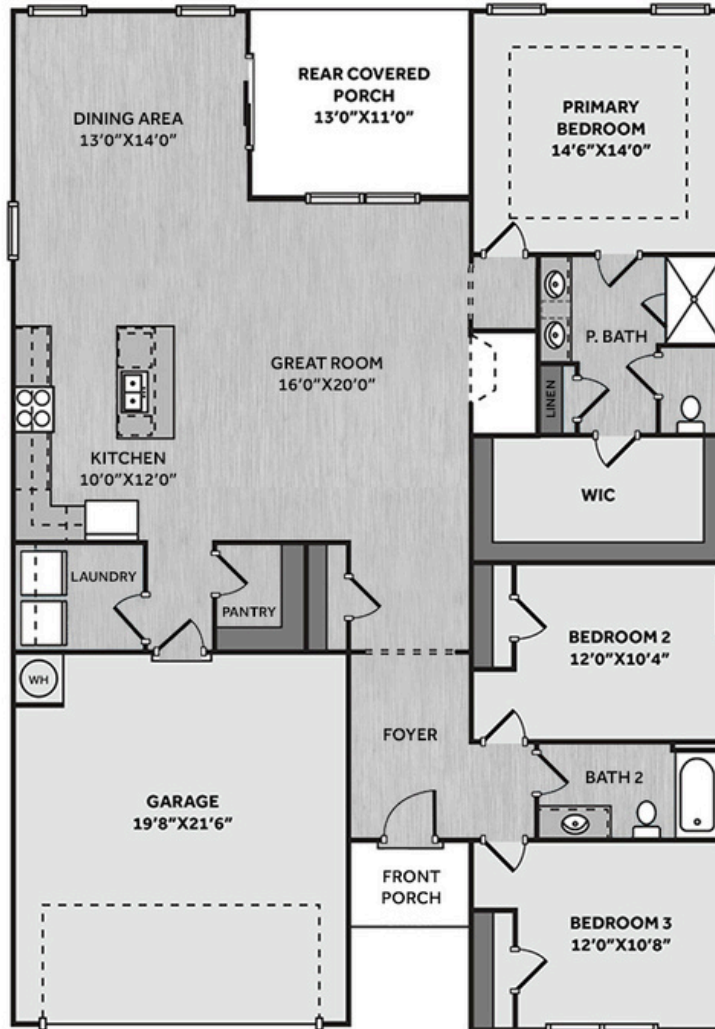
SALES AND MARKETING BY:



TYRE REALTY GROUP



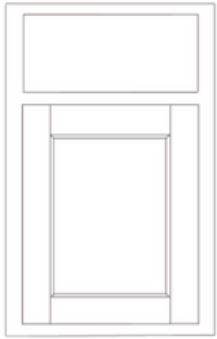
WWW.CAVINESSANDCATES.COM



This Energy Plus Certified home on a spacious .58-acre lot offers low-maintenance, stylish living. The open floor plan includes a kitchen and dining area with views of the backyard, an island overlooking the great room, "Luna Pearl" granite countertops, gray subway tile backsplash, white shaker cabinets, and stainless-steel appliances—including a microwave, dishwasher, and gas range. The spacious great room features a gas log fireplace and flows seamlessly into the kitchen and dining areas. Sliding glass doors in the dining area lead to a rear-covered porch, perfect for indoor-outdoor entertaining. A walk-in pantry and separate laundry room are located near the garage entry. The primary suite boasts a tray ceiling with crown molding, and its bathroom offers a white dual sink vanity with a center drawer stack, a "Niagara" quartz countertop, a linen closet, a private water closet, a walk-in shower, and access to a spacious walk-in closet. Two additional bedrooms off the foyer share a full hall bathroom with a vanity and a tub/shower combination. The front door, painted in SW "Sea Serpent," features a transom window and smart keypad entry. Exterior features include low-maintenance vinyl siding with shake accents, a stone skirt, dimensional roof shingles, and a 2-car garage. Backed by a 1-2-10 builder in-house warranty for peace of mind.

**KITCHEN**

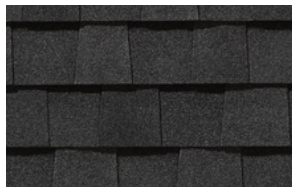
Door Style:  
Fairmont



Color:  
White



**EXTERIOR**



**FLOORING**

**BATHROOM**

Door Style:  
Fairmont



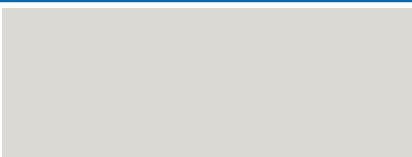
Color:  
White



**LIGHTING**



**PAINT**



## KITCHEN

- Brushed Nickel Brantford Kitchen Sink Fixture
- Standard SS 50/50 Double Bowl Sink
- Fairmont White Flat Panel Cabinets w/ Brushed Nickel 6501195 Pulls
- 1/2 Bullnose Edge Luna Pearl Granite Countertops
- 3x6 Subway Tile - Color Wheel Classic / 3x6 x114 Desert Gray Glossy w/ #89 Smoke Gray Grout - Set in Brick Pattern Kitchen Backsplash
- Standard Kitchen Layout w/ 42" Wall Cabinets and 2 1/4" Crown on Kitchen Cabinets
- Ferguson/Frigidaire Natural Gas Stainless Steel Appliances (Dishwasher, Gas Range, and Over-the-Range Microwave)

## BATHROOM

- Brantford 4" Spread Brushed Nickel Plumbing Package (Whole House)
- Niagara Quartz Countertops w/ Square Bowls
- Fairmont White Flat Panel Cabinets w/ Brushed Nickel BP9161196195 Pulls
- Primary Bath Adult Height Cabinets and 12" Stack of Drawers to Primary Vanity
- Raised/Elongated Toilets in Primary Bath and Bath #2
- ARO4 w/ #93 Fossil Grout Ceramic Tile Primary Shower Surround
- ARO4 w/ #93 Fossil Grout on Bath #2 Shower Surround

## FLOORING

- Optimum Plus - Lighthouse #5091 LVP in Foyer, Great Room, Kitchen/Dining Area, Primary Bath, Bath #2, Laundry
- Graceful Finesse Concrete Carpeting

## INTERIOR PAINT & TRIM

- Primary Interior Color Sherwin Williams: First Star SW7646 w/ Matching Ceiling

## LIGHTING / ELECTRICAL

- Seville Lighting Package Brushed Nickel (Whole House)
- 2 Dianna Three Light Mini Lantern Pendants over Kitchen Island
  - Model: 5192603-962
- 4 LED Recess Lights in Kitchen
- 2 Bulb Floodlights on Rear Corners

## FIREPLACE

- Gas Fireplace w/ Wescott Mantel and Absolute Black Surround (No Hearth)

## EXTERIOR

- 6-Panel Front Door & Transom Package w/ Smart Keypad Deadbolt and Brushed Nickel Handleset
- Front Door Painted: Sea Serpent SW7615
- Moire Black Dimensional Shingles
- White Vinyl Body Siding
- White Shake Accent
- White Exterior Trim
- Black Board & Batten Shutters
- 4 over 1 White Windows
- White Bridgeport Steel Extended Panel Garage Door w/ Spear Style Decorative Hardware
- Black Gutters

## DESIGN OPTIONS SUMMARY

### STRUCTURAL

Elevation C

Optional Gas Fireplace on Interior Wall

BASE PRICE: \$354,200

Standard

\$2,310

### DESIGN CENTER OPTIONS \$14,404

Brantford 4" Spread Brushed Nickel Plumbing Package (Whole House)

Raised/Elongated Toilet (x1 - Bath #2)

6-Panel Front Door & Transom Package

Kitchen Pendant Lights: Dianna Three Light Mini Lantern - 5192603-962 (x2- Over Kitchen Island)

Add Recess Light Assembly to Non Standard Location (x4- Kitchen)

Add Two - 2 Bulb Floodlights on Single Switch Circuit (Rear Corners)

Add Smart Keypad Deadbolt Front Door

Add Spear Style Decorative Hardware to Garage Door

Kitchen - Add 42" Wall Cabinets

Add 2 ¼" Crown to Standard Cabinet Layout

Primary Bath - Adult Height Vanity

Add 12" Stack of Drawers to Primary Bath Vanity

Upgrade all Vanity Bowls to Square Bowls

Level 1 Fireplace Mantel

Level 1 Fireplace Surround (No Hearth)

LVP Level 1 - Foyer, Great Room, Kitchen/Dining Area, Primary Bath, Bath #2, Laundry

Kitchen Backsplash: 3x6 Subway Tile - Color Wheel Classic

Upgrade to Front Door Handleset

Stainless Steel Gas Range, Microwave and Dishwasher

TOTAL OPTIONS ADDED

\$16,714

TOTAL SALES PRICE: \$370,914

Disclaimer: In an effort to continuously improve and develop our products, Caviness & Cates reserves the right to change products, features, pricing, and specifications without prior notice. Features may vary between homes built within the same community. Please see actual home purchase & sale agreement for additional information, disclosures, and disclaimers. Plans are artistic renderings and may not reflect final product. All information on square footage, acreage, and dimensions should be considered approximate. Consult with New Homes Sales Specialist before writing an offer.