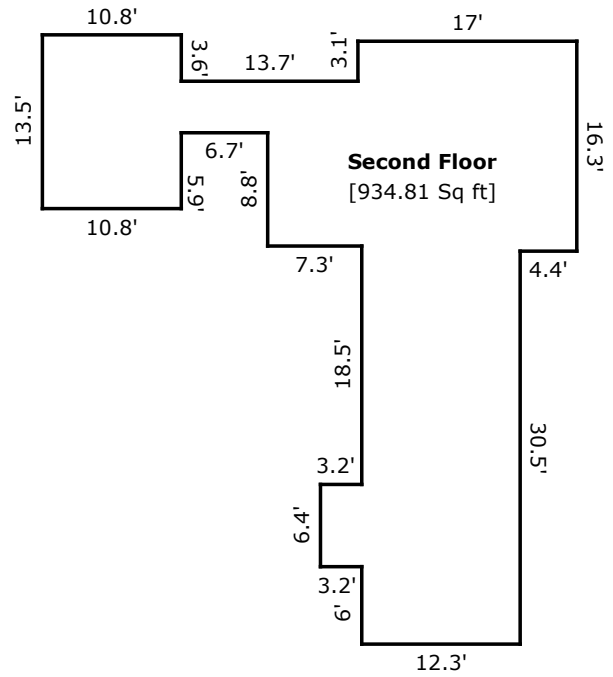
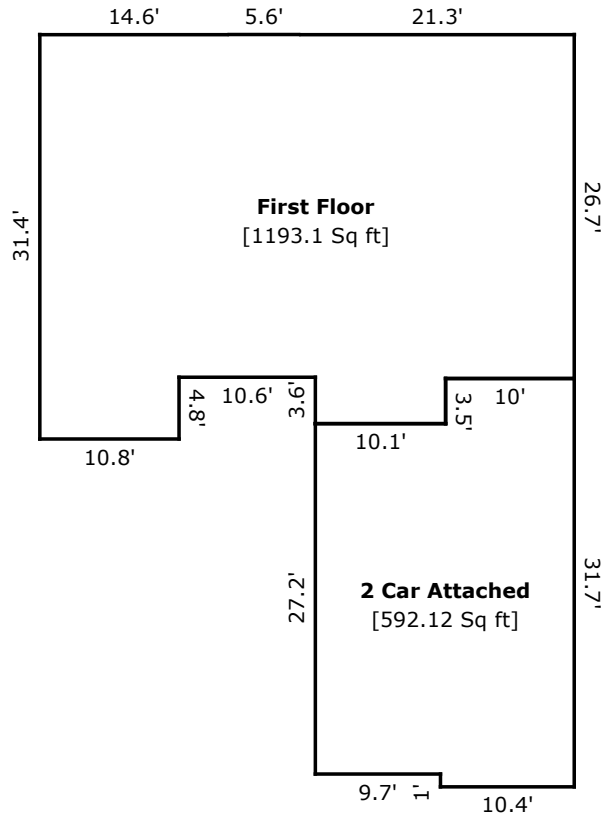


201 Lazar Ln



TOTAL Sketch by a la mode

Area Calculations Summary

Living Area	Calculation Details
First Floor	$41.5 \times 26.6 = 1103.9$ $3.6 \times 10.1 = 36.36$ $0.1 \times 10 = 1$ $4.8 \times 10.8 = 51.84$
Second Floor	$13.5 \times 10.8 = 145.8$ $16.3 \times 4.4 = 71.72$ $46.8 \times 12.3 = 575.64$ $15.9 \times 0.3 = 4.77$ $12.8 \times 7 = 89.6$ $4 \times 6.7 = 26.8$ $6.4 \times 3.2 = 20.48$
Total Living Area (Rounded):	2128 Sq ft
Non-living Area	
2 Car Attached	$27.2 \times 9.7 = 263.84$ $10.4 \times 28.2 = 293.28$ $10 \times 3.5 = 35$