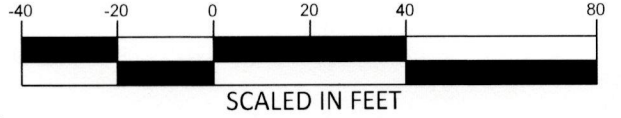


Notes:

- This plat is for location purposes only. Builder should verify foundation information with plans before construction begins.
- There is no USCE or NCGS monument within 2000' of this site.
- The subject property is not within a special flood hazard area as determined by the Department of Housing and Urban Development.
- The easement information shown hereon was obtained from the recorded plat. No updated title search was performed by the surveyor.
- All distances are measured in feet.
- This map reflects the information contained on the Record Plat and does not represent compliance with the Restrictive Covenants.

LEGEND

- EXISTING IRON PIPE
- CURVE PT / PC
- SURVEYED LINE
- EASEMENT LINE
- ADJOINER
- SURVEYED BY OTHERS



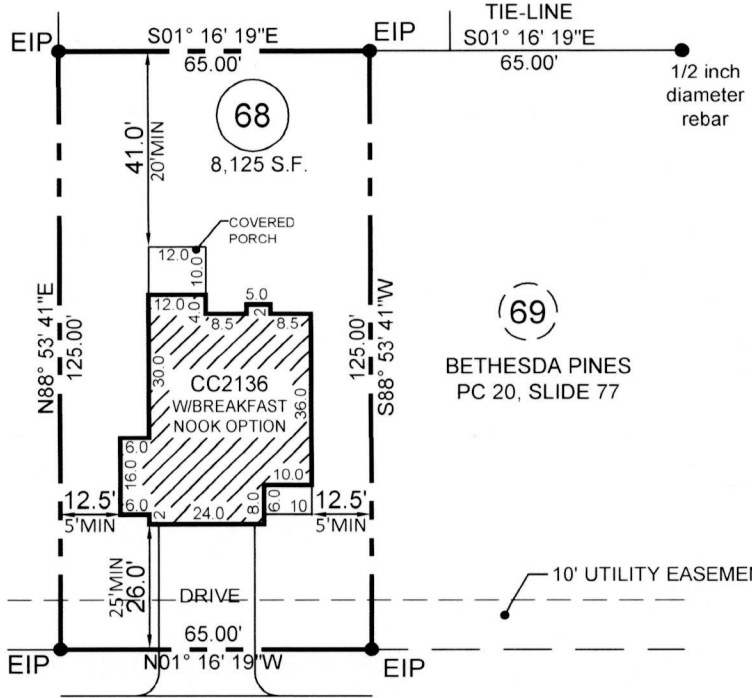
MAP NOT DRAWN IN ACCORDANCE WITH GS 47-30
 NOT FOR CONVEYANCES OR SALES



(74) BETHESDA PINES PC 20, SLIDE 77
 (73) BETHESDA PINES PC 20, SLIDE 77

(67) BETHESDA PINES PC 20, SLIDE 77

(69) BETHESDA PINES PC 20, SLIDE 77



ZONED R-20 WITH CONSERVATION-
 DEVELOPMENT SUBDIVISION
 UTILIZE RM-6 SETBACK DISTANCES:
 FRONT 25' MIN
 SIDE (EXT) 15' MIN
 SIDE (INT) 5' MIN
 REAR 20' MIN

GRASSY GAP TRAIL
 60' PUBLIC R/W

- PLOT PLAN FOR -
CATES BUILDING, INC.
 - SUBDIVISION -
BETHESDA PINES

SANDHILLS TOWNSHIP
 MOORE COUNTY
 NORTH CAROLINA

MARCH 6, 2025
 SCALE 1" = 40'
 FIELD BOOK:

REFERENCE
 PC 20, SLIDE 77
 MOORE COUNTY NORTH CAROLINA REGISTRY

ENGINEERS
 PLANNERS
 SURVEYORS
 MOORMAN, KIZER & REITZEL, INC.



115 broadfoot ave.
 p.o. box 53774
 fayetteville, n.c., 28305
 phone 910-484-5191
 fax 910-484-0388
 LICENSE #: F-0106

Thy J. Gooden
 PROF SURVEYOR NO. L-3196

