

187-B

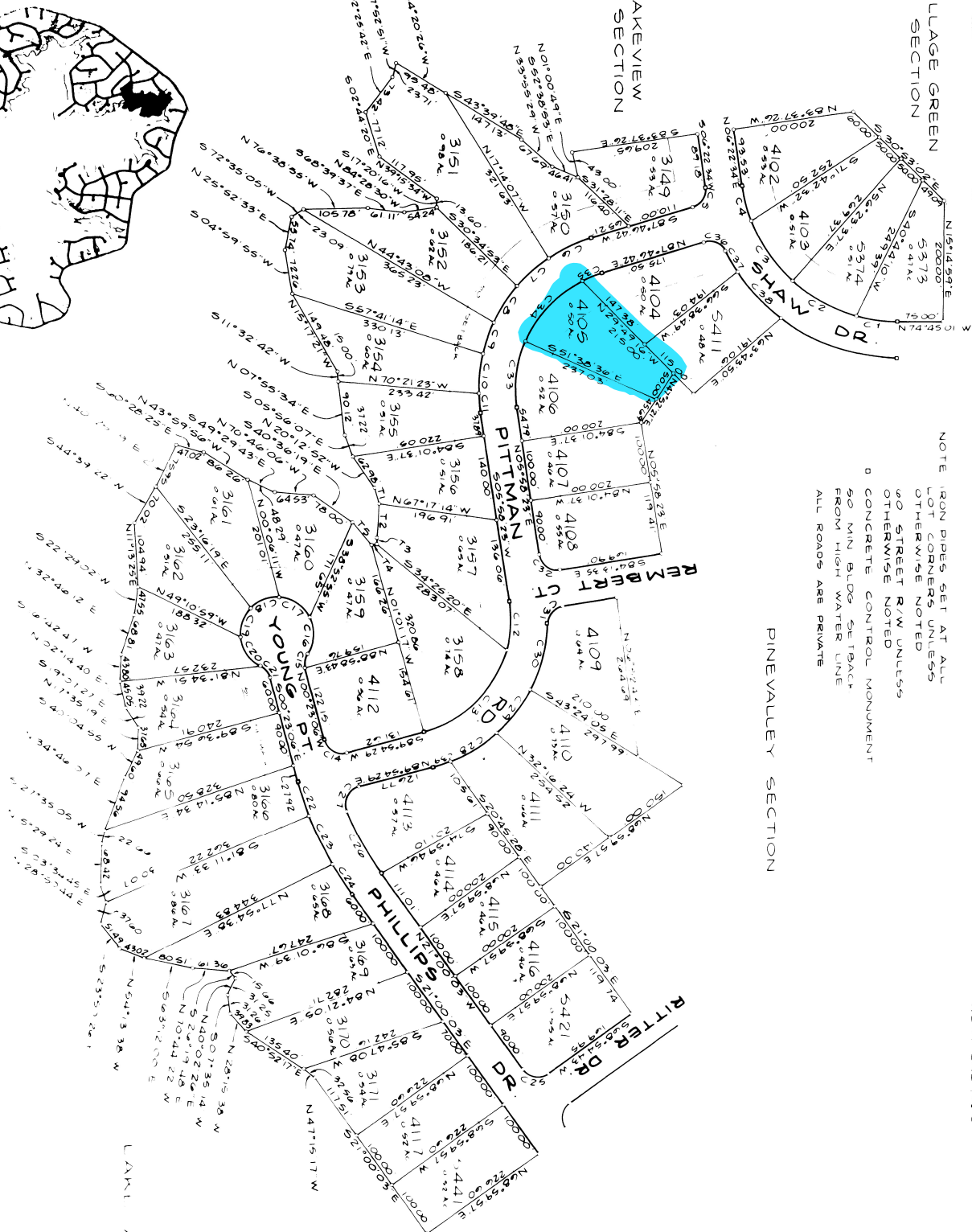


VILLAGE GREEN SECTION

LAKEVIEW SECTION



LAKEVIEW SECTION



NOTE: IRON PIPES SET AT ALL LOT CORNERS UNLESS OTHERWISE NOTED

60' STREET R/W UNLESS OTHERWISE NOTED
 CONCRETE CONTROL MONUMENT
 50' MIN BLDG SETBACK FROM HIGH WATER LINE
 ALL ROADS ARE PRIVATE

PINE VALLEY SECTION

SEVEN LAKES WEST
 WOODRIDGE SECTION
 MINERAL SPRINGS TWP, MOORE CO., NC
 OWNER AND DEVELOPER
 LONGLEAF, INC
 P.O. BOX 319
 WEST END, NC

APPROVED FOR RECORDATION
 SHARPA BUNNER, Notary Public for Moore County, NC
 JERRY K. ALLEN, Notary Public for Moore County, NC
 1/25/17
 Sharr Bunner
 Notary Public

LOT	BRG	DIST	ARC
1	50°15'52" E	48.28	60.48'
2	54°15'50" S	120.29	262.06'
3	52°07'00" E	120.00	262.06'
4	50°07'11" S	50.00	262.06'
5	50°17'36" S	36.10	50.00
6	52°19'11" W	71.94	260.86'
7	54°27'53" W	70.00	260.86'
8	54°31'21" W	50.00	260.86'
9	52°07'24" S	66.00	260.86'
10	50°39'11" W	33.80	260.86'
11	50°17'58" E	192.35	80.59'
12	50°17'58" E	192.35	80.59'
13	52°34'14" E	42.32	30.00
14	52°34'14" E	24.49	46.97'
15	52°34'14" E	24.49	30.00
16	52°34'14" E	24.49	30.00
17	52°34'14" E	24.49	30.00
18	52°34'14" E	24.49	30.00
19	52°34'14" E	24.49	30.00
20	52°34'14" E	24.49	30.00
21	52°34'14" E	24.49	30.00
22	52°34'14" E	24.49	30.00
23	52°34'14" E	24.49	30.00
24	52°34'14" E	24.49	30.00
25	52°34'14" E	24.49	30.00
26	52°34'14" E	24.49	30.00
27	52°34'14" E	24.49	30.00
28	52°34'14" E	24.49	30.00
29	52°34'14" E	24.49	30.00
30	52°34'14" E	24.49	30.00
31	52°34'14" E	24.49	30.00
32	52°34'14" E	24.49	30.00
33	52°34'14" E	24.49	30.00
34	52°34'14" E	24.49	30.00
35	52°34'14" E	24.49	30.00
36	52°34'14" E	24.49	30.00
37	52°34'14" E	24.49	30.00
38	52°34'14" E	24.49	30.00
39	52°34'14" E	24.49	30.00

A REVISION 1/25/17

