

I hereby certify that I am the owner of the property shown on this plat, that this plat was made from an actual survey, that all state and county taxes or other assessments now due on this land have been paid and that I adopt this plan of subdivision with my free consent and dedicate all streets, parks, and other open spaces to public or private use as noted.

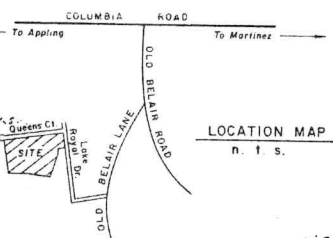
Date 7-12-82 Owner COLUMBIA LAND CORP.
 To my opinion, this plat is a correct representation of the land platted, and has been prepared in conformity with the minimum requirements of law.

James E. Baldwin
 Land Surveyor
 Ga. Per. 790

This is to certify that the street installation or bond in lieu thereof, rights-of-way, easements and other improvements have been dedicated to and accepted by the Board of Commissioners of Columbia County.

County Engineer _____ Date _____

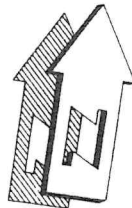
Clerk, Board of Commissioners _____ Date _____



Columbia County, Georgia all the requirements for approval having been fulfilled, this plat was given final approval by the Columbia County Planning Commission on July 12, 1982.
 This approval constitutes approval of final plat this 12 day of July, 1982.

Chairman, Columbia County Planning Commission

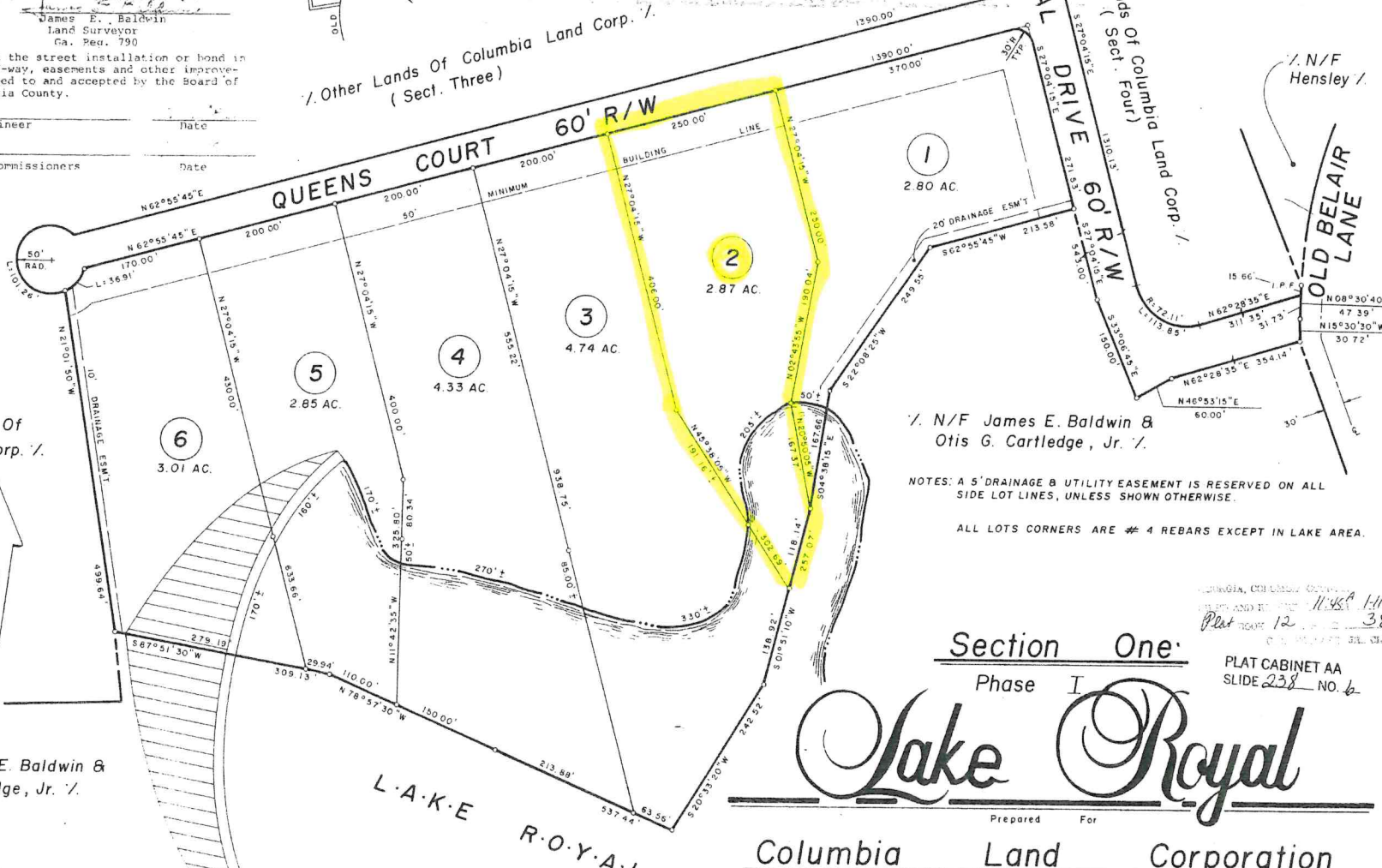
(Sect. Two)
 Other Lands Of Columbia Land Corp.



N/F James E. Baldwin & Otis G. Cartledge, Jr.



James E. Baldwin



NOTES: A 5' DRAINAGE & UTILITY EASEMENT IS RESERVED ON ALL SIDE LOT LINES, UNLESS SHOWN OTHERWISE.

ALL LOTS CORNERS ARE # 4 REBARS EXCEPT IN LAKE AREA.

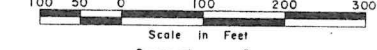
GEORGIA, COLUMBIA COUNTY
 MAP AND RECORD NO. 11-583
 PLAT NO. 12 OF 38

PLAT CABINET AA
 SLIDE 238 NO. 6

Section One
 Phase I
Lake Royal

Columbia Land Corporation

COLUMBIA COUNTY, GEORGIA
 SCALE 1" = 100'
 JULY 12, 1982



Prepared By
JAMES E. BALDWIN R.L.S. # 790
 AUGUSTA, GEORGIA